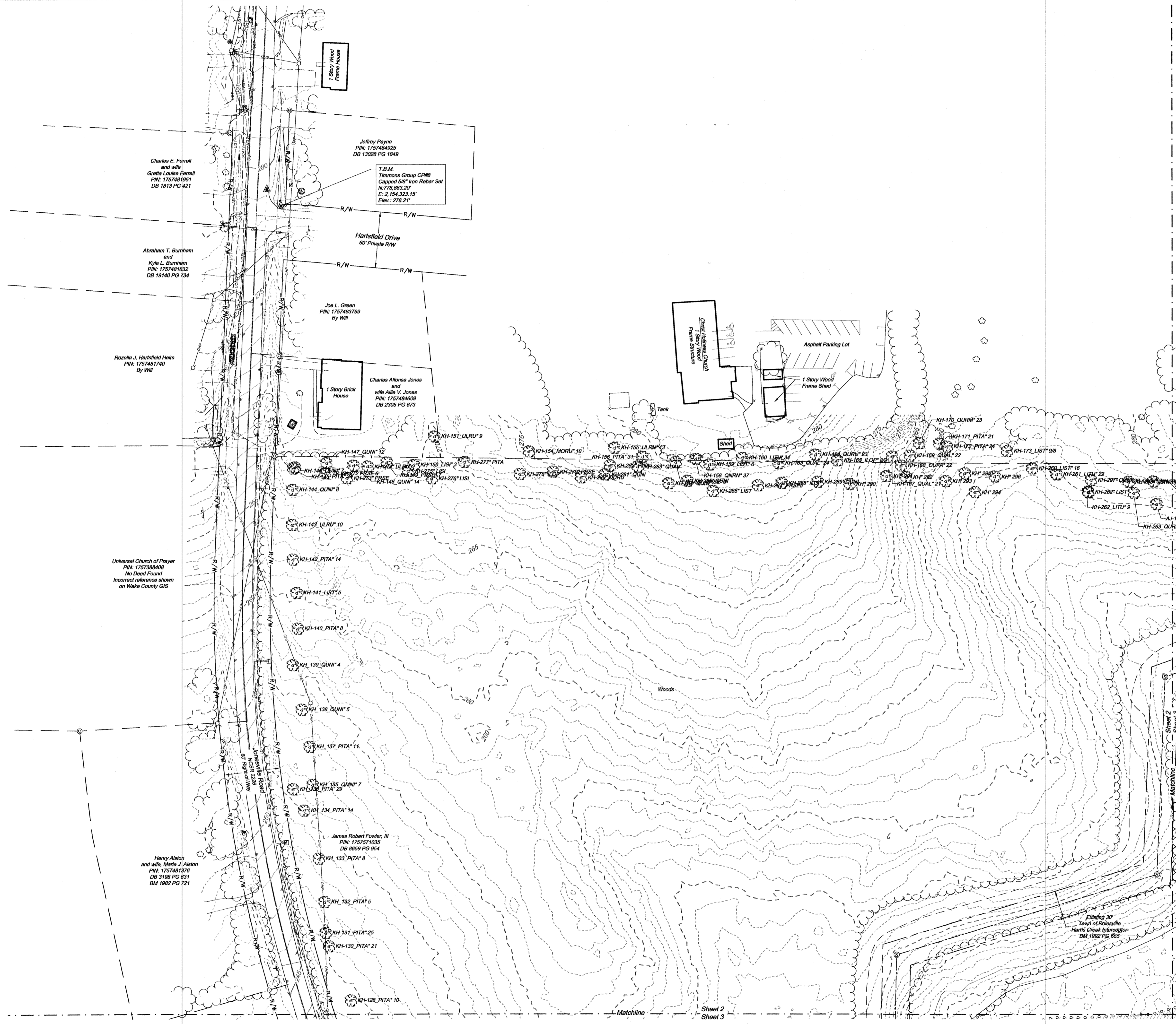


NC GRID (MAD83 (2011))



Charles E. Farrell and wife
Greta Louise Farrell
PIN: 1757481951
DB 1919 PG 421

Jeffrey Payne
PIN: 1757484925
DB 13028 PG 1849

T.B.M.
Timmons Group CP#8
Capped 5/8" Iron Rebar Set
N=778.863 30"
E=2,154.323 15"
Elev.: 278.21'

Abraham T. Burnham and
Kyla L. Burnham
PIN: 1757481632
DB 19140 PG 734

Joe L. Green
PIN: 1757483799
By Will

Rozella J. Hartsfield Heirs
PIN: 1757481740
By Will

1 Story Brick House

Charles Alfonso Jones and
wife Aila V. Jones
PIN: 1757484609
DB 2305 PG 673

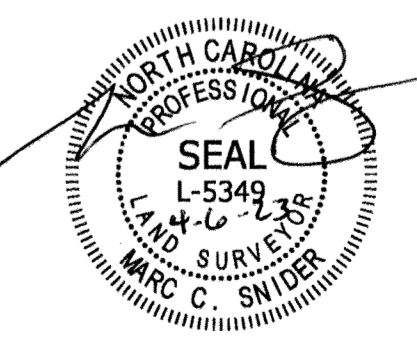
Universal Church of Prayer
PIN: 1757388408
No Dead Found
Incorrect reference shown
on Wake County GIS

James Robert Fowler, III
PIN: 1757571035
DB 8559 PG 554

Henry Alston and wife, Maria J. Alston
PIN: 1757481976
DB 3180 PG 831
BM 1982 PG 121

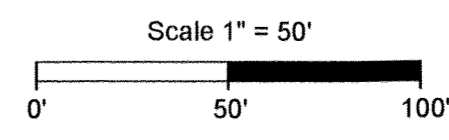
Legend		Abbreviations Legend	
⊙	IPF - Iron Pipe Found	BM	Book of Mass
⊙	IRF - Iron Rod Found	CMP	Corrugated Metal Pipe
⊙	CMF - Concrete Monument Found	DB	Deed Book
⊙	T.B.M. - Temporary Bench Mark	DIP	Ductile Iron Pipe
⊙	Sanitary Manhole	ELEV.	Elevation
⊙	Satellite Dish	EP	Edge of Pavement
⊙	Electric Box	IE/INV.	Invert
⊙	Telephone Pedestal	MKG	Marking
⊙	Cable TV Pedestal	PG	Page
⊙	Sign	PIN	Parcel Identification Number
⊙	Electric Meter	R/W	Right of Way
⊙	Power Pole	RCP	Reinforced Concrete Pipe
⊙	Light Pole	SSMH	Sanitary Sewer Manhole
⊙	Drainage structure		
⊙	Bollard		
⊙	Air Conditioner Unit		
⊙	Mailbox		
⊙	Yard Light		
⊙	Well		
⊙	Guy		
⊙	Tree		
⊙	Handicap Parking		
⊙	Tank		

—	Surveyed Property Line
---	Tie Line
---	Line Not Surveyed
⋯	Flood Zone Line
⋯	Sanitary Sewer Line
X	Fence
—	Overhead Power Line
G	Painted Gas Line
---	Painted Power Line
---	Storm / Pipe
---	Painted Telephone Line
---	Painted Water Line
---	Edge of Tree Line
---	Painted Fiber Optic Line
---	Painted Cable TV Line
---	Creek Centerline
---	Utility Line
---	Easement Line
---	Right of Way Line
---	Edge of Pavement
---	Curb and Gutter



Topographic Exhibit prepared for
Hopper Communities, Inc.
5109 Mitchell Mill Road
Wake Forest, North Carolina

Wake Forest Township	Wake County
Date: 04/06/2023	Scale: 1" = 50'
Sheet 2 of 10	J.N.: 47342
Drawn by: MWW	PLS Checked by: MCS
Field Edit by: CW on 04/04/2023	
Map Checked by: N/A	
Revisions:	



THIS DRAWING PREPARED AT THE
RALEIGH OFFICE
5410 TRINITY ROAD, SUITE 103 | RALEIGH, NC 27607
TEL 919.866.4951 FAX 919.869.5663
WWW.TIMMONSGROUP.COM
NORTH CAROLINA LICENSE NUMBER C-1852

YOUR VISION ACHIEVED THROUGH OURS.

TIMMONS GROUP

Y:\2023\47342\110_Mitchell_Mill_Road\110_Mitchell_Mill_Road\110_Mitchell_Mill_Road.dwg | Plot on 3/30/2023 10:34 AM by Gwyneth Carter

NC GRID NAD83 (2011)

Swamp/Marsh
Harris Creek

Floodway
FRIS Map # 3720175700K
Panel # 1757
Effective Date: 07/19/2022

Zone AE
FRIS Map # 3720175700K
Panel # 1757
Effective Date: 07/19/2022

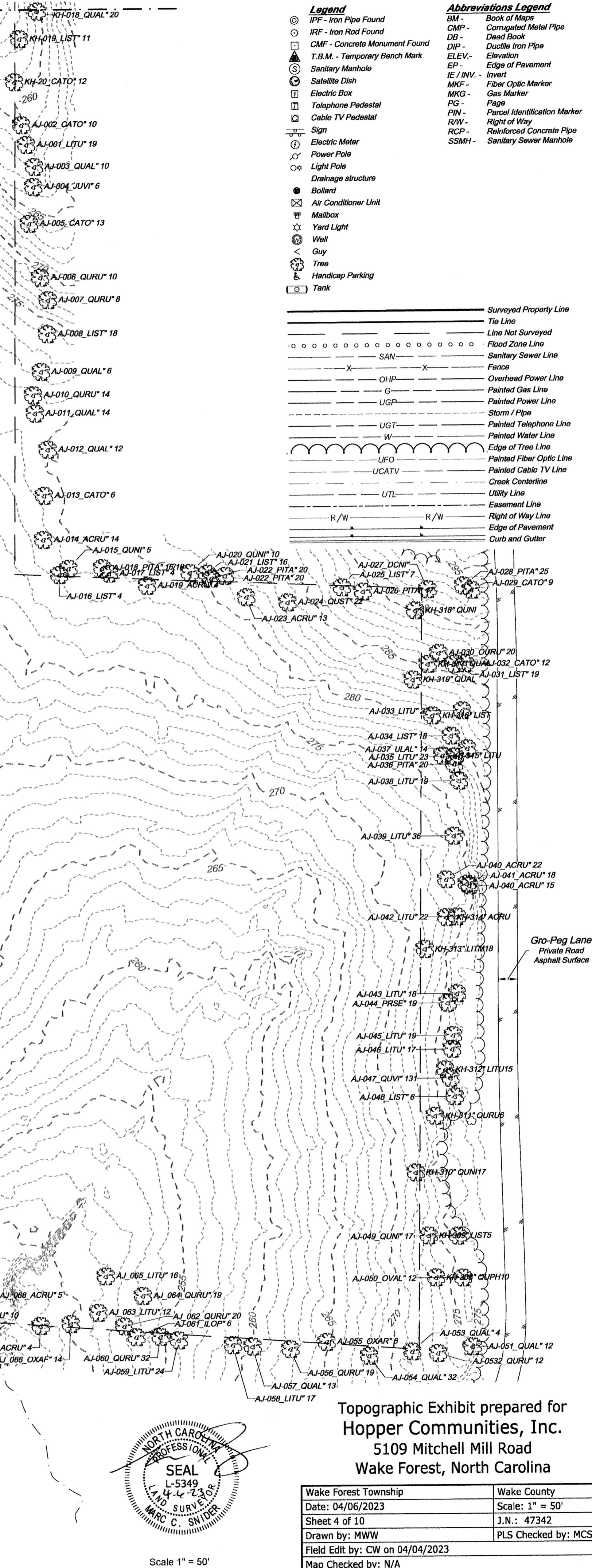
0.2% Annual Chance Flood Hazard
FRIS Map # 3720175700K
Panel # 1757
Effective Date: 07/19/2022

Matchline Sheet 3 Sheet 4

Matchline Sheet 4 Sheet 7

- Legend**
- IPF - Iron Pipe Found
 - IRF - Iron Rod Found
 - CMF - Concrete Monument Found
 - T.B.M. - Temporary Bench Mark
 - Sanitary Manhole
 - Satellite Dish
 - Electric Box
 - Telephone Pedestal
 - Cable TV Pedestal
 - Sign
 - Electric Meter
 - Power Pole
 - Light Pole
 - Drainage structure
 - Boiler
 - Air Conditioner Unit
 - Mailbox
 - Yard Light
 - Well
 - Guy
 - Tree
 - Handicap Parking
 - Tank
- Abbreviations Legend**
- BM - Book of Maps
 - CMP - Corrugated Metal Pipe
 - DB - Dead Block
 - DIP - Ductile Iron Pipe
 - ELEV. - Elevation
 - EP - Edge of Pavement
 - IE / INV. - Invert
 - MKF - Fiber Optic Marker
 - MKG - Gas Marker
 - PG - Page
 - PIN - Parcel Identification Marker
 - R/W - Right of Way
 - RCP - Reinforced Concrete Pipe
 - SSMH - Sanitary Sewer Manhole

- Surveyed Property Line
- Tie Line
- Line Not Surveyed
- Flood Zone Line
- Sanitary Sewer Line
- Fence
- Overhead Power Line
- Painted Gas Line
- Painted Power Line
- Storm / Pipe
- Painted Telephone Line
- Painted Water Line
- Edge of Tree Line
- Painted Fiber Optic Line
- Painted Cable TV Line
- Cross Centerline
- Utility Line
- Easement Line
- Right of Way Line
- Edge of Pavement
- Curb and Gutter



THIS DRAWING PREPARED AT THE
RALEIGH OFFICE

YOUR VISION ACHIEVED THROUGH OURS.

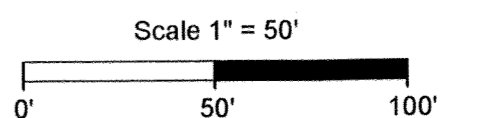
TIMMONS GROUP

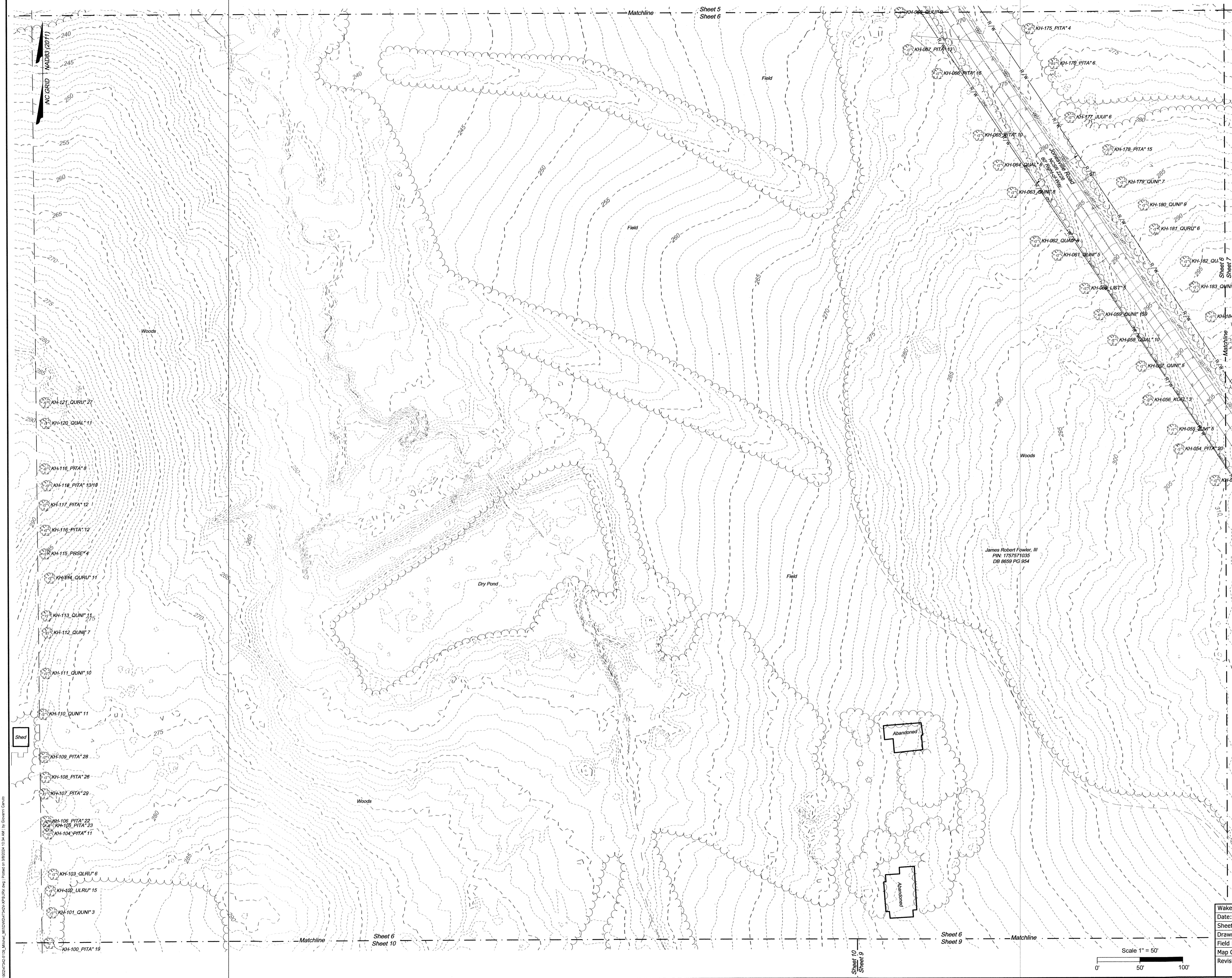
5410 TOWNHILL ROAD, SUITE 102 | RALEIGH, NC 27607
TEL 919.566.4951 | FAX 919.565.5463 | www.timmons.com
NORTH CAROLINA LICENSE NUMBER C-652



Topographic Exhibit prepared for
Hopper Communities, Inc.
5109 Mitchell Mill Road
Wake Forest, North Carolina

Wake Forest Township	Wake County
Date: 04/06/2023	Scale: 1" = 50'
Sheet 4 of 10	J.N.: 47342
Drawn by: MWW	PLS Checked by: MCS
Field Edit by: CW on 04/04/2023	
Map Checked by: N/A	
Revisions:	

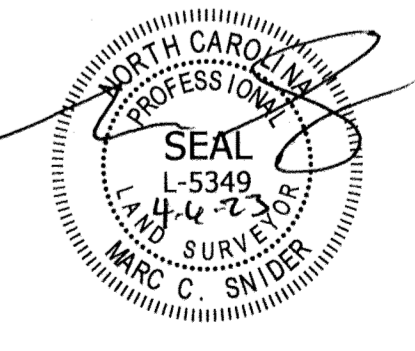




- Abbreviations Legend**
- BM - Book of Maps
 - CMP - Corrugated Metal Pipe
 - DB - Dead Book
 - DIP - Ductile Iron Pipe
 - ELEV - Elevation
 - EP - Edge of Pavement
 - IE - INV - Invert
 - FKF - Fiber Optic Marker
 - MKG - Gas Marker
 - PG - Page
 - PIW - Parcel Identification Marker
 - R/W - Right of Way
 - RCP - Reinforced Concrete Pipe
 - SSMH - Sanitary Sewer Manhole

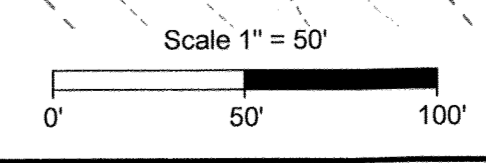
- Legend**
- IPF - Iron Pipe Found
 - IRF - Iron Rod Found
 - CMF - Concrete Monument Found
 - T.B.M. - Temporary Bench Mark
 - Sanitary Manhole
 - Satellite Dish
 - Electric Box
 - Telephone Pedestal
 - Cable TV Pedestal
 - Sign
 - Electric Meter
 - Power Pole
 - Light Pole
 - Drainage structure
 - Bollard
 - Air Conditioner Unit
 - Mailbox
 - Yard Light
 - Well
 - Guy
 - Tree
 - Handicap Parking
 - Tank

- Surveyed Property Line
- - - Tie Line
- - - Line Not Surveyed
- - - Flood Zone Line
- - - Sanitary Sewer Line
- - - Fence
- - - OHP - Overhead Power Line
- - - G - Painted Gas Line
- - - UGP - Painted Power Line
- - - Storm / Pipe
- - - UST - Painted Telephone Line
- - - W - Painted Water Line
- - - Edge of Tree Line
- - - UFO - Painted Fiber Optic Line
- - - UCATV - Painted Cable TV Line
- - - Creek Centerline
- - - UTL - Utility Line
- - - Easement Line
- - - R/W - Right of Way Line
- - - Edge of Pavement
- - - Curb and Gutter



Topographic Exhibit prepared for
 Hopper Communities, Inc.
 5109 Mitchell Mill Road
 Wake Forest, North Carolina

Wake Forest Township	Wake County
Date: 04/06/2023	Scale: 1" = 50'
Sheet 6 of 10	I.N.: 47342
Drawn by: MWW	PLS Checked by: MCS
Field Edit by: CW on 04/04/2023	
Map Checked by: N/A	
Revisions:	

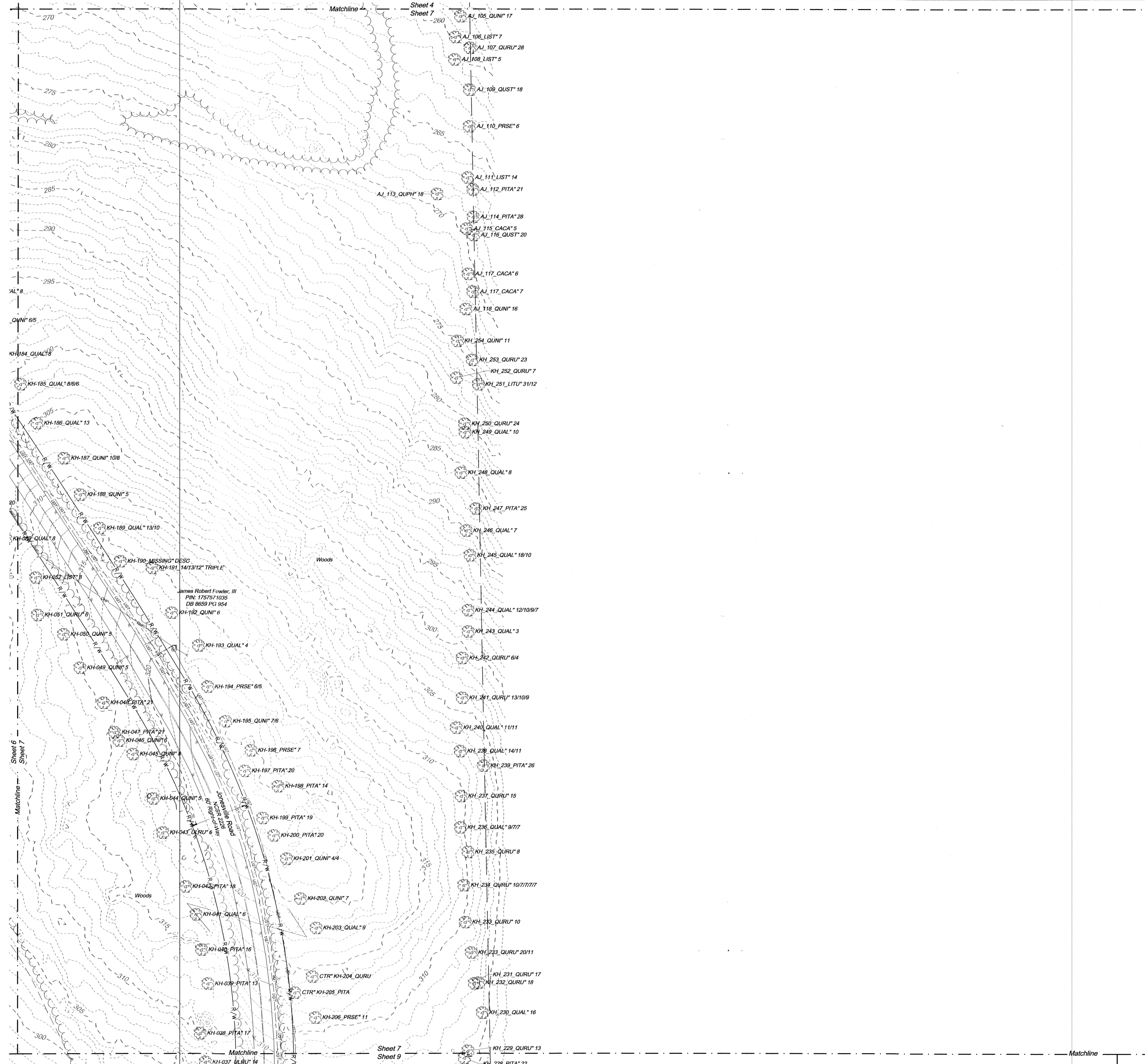


THIS DRAWING PREPARED AT THE
RALEIGH OFFICE
 5410 TRINITY ROAD, Suite 102 | RALEIGH, NC 27607
 TEL 919.596.8800 | WWW.TIMMONSGROUP.COM
 NORTH CAROLINA LICENSE NUMBER C-1652

YOUR VISION ACHIEVED THROUGH OURS.

TIMMONS GROUP

NC GRID (NAD83 (2011))



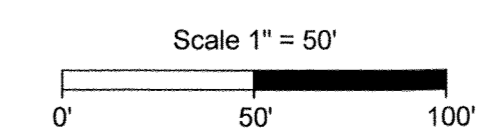
Legend	Abbreviations Legend
<ul style="list-style-type: none"> ⊙ I/P - Iron Pipe Found ⊙ I/R - Iron Rod Found ⊙ C/M - Concrete Monument Found ⊙ T.B.M. - Temporary Bench Mark ⊙ S - Sanitary Manhole ⊙ Satellite Dish ⊙ Electric Box ⊙ Telephone Pedestal ⊙ Cable TV Pedestal ⊙ Sign ⊙ Electric Meter ⊙ Power Pole ⊙ Light Pole ⊙ Drainage structure ⊙ Bollard ⊙ Air Conditioner Unit ⊙ Mailbox ⊙ Yard Light ⊙ Well ⊙ Guy ⊙ Tree ⊙ Handicap Parking ⊙ Tank 	<ul style="list-style-type: none"> BM - Book of Maps CMP - Corrugated Metal Pipe DB - Deed Book DIP - Ductile Iron Pipe ELEV. - Elevation EP - Edge of Pavement IE / INV. - Invert MKF - Fiber Optic Marker MKG - Gas Marker PG - Page PIW - Parcel Identification Marker R/W - Right of Way RCP - Reinforced Concrete Pipe SSMH - Sanitary Sewer Manhole

—	Surveyed Property Line
---	Title Line
---	Line Not Surveyed
---	Flood Zone Line
---	Sanitary Sewer Line
---	Fence
---	Overhead Power Line
---	Painted Gas Line
---	Painted Power Line
---	Storm / Pipe
---	Painted Telephone Line
---	Painted Water Line
---	Edge of Tree Line
---	Painted Fiber Optic Line
---	Painted Cable TV Line
---	Creek Centerline
---	Utility Line
---	Essment Line
---	Right of Way Line
---	Edge of Pavement
---	Curb and Gutter



Topographic Exhibit prepared for
Hopper Communities, Inc.
5109 Mitchell Mill Road
Wake Forest, North Carolina

Wake Forest Township	Wake County
Date: 04/06/2023	Scale: 1" = 50'
Sheet 7 of 10	J.N.: 47342
Drawn by: MWW	PLS Checked by: MCS
Field Edit by: CW on 04/04/2023	
Map Checked by: N/A	
Revisions:	



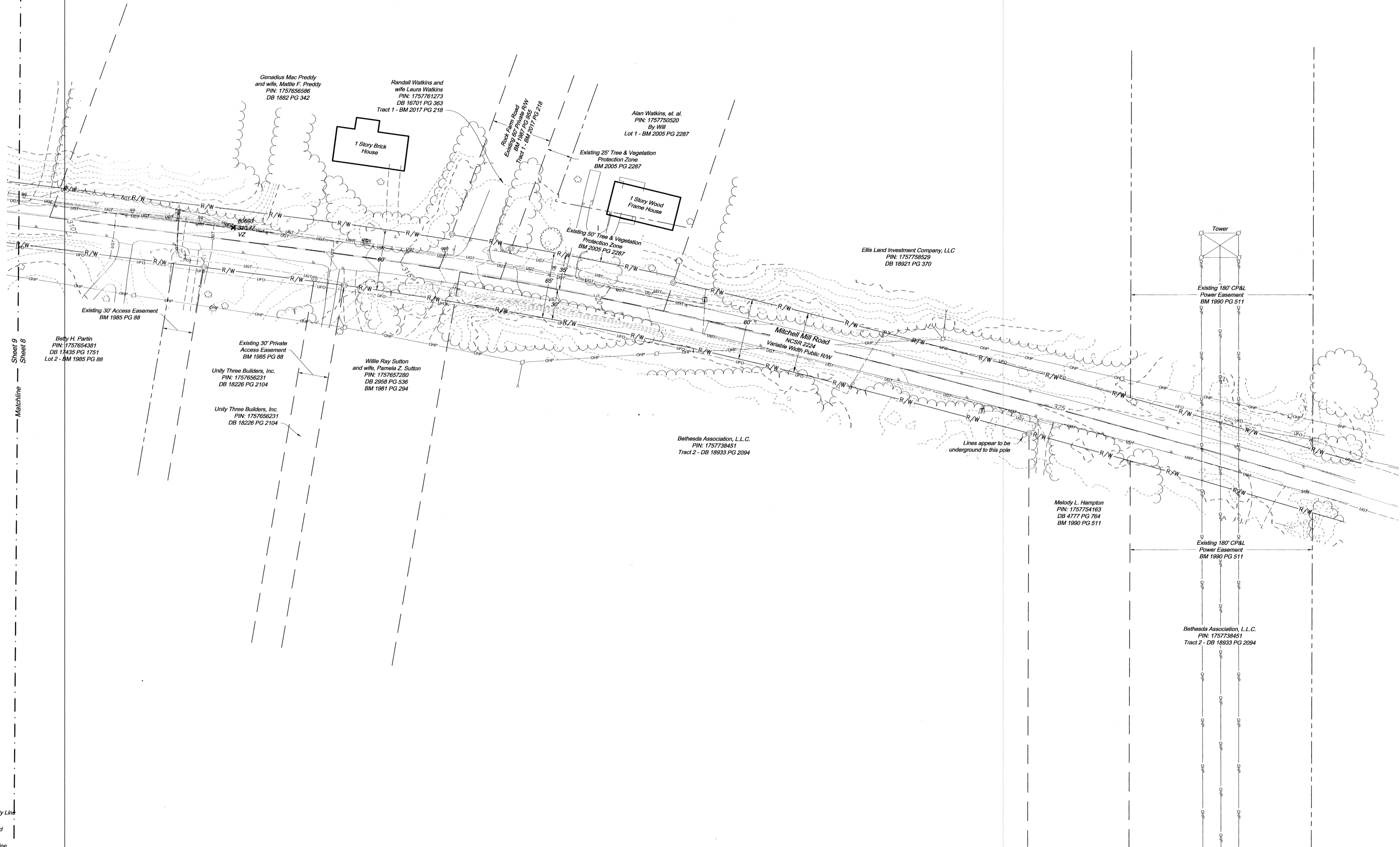
THIS DRAWING PREPARED AT THE
RALEIGH OFFICE
5410 TRINITY ROAD, Suite 102 | RALEIGH, NC 27607
TEL 919.866.4951 FAX 919.859.5663 www.timmons.com
NORTH CAROLINA LICENSE NUMBER C-1632

YOUR VISION ACHIEVED THROUGH OURS.

TIMMONS GROUP

\\0247242-1102_Matthew_MEDWING\47424\KPSURV\New Files on 3/30/2024 10:34 AM 13 Government Center

NC GRID 1 WAD357 (2011)



Abbreviations Legend

- BM - Book of Maps
- CMP - Corrugated Metal Pipe
- DB - Dead Book
- DIP - Ductile Iron Pipe
- ELEV - Elevation
- EP - Edge of Pavement
- IE/INV - Invert
- MKF - Fiber Optic Marker
- MKG - Gas Marker
- PG - Page
- PIN - Parcel Identification Marker
- R/W - Right of Way
- RCP - Reinforced Concrete Pipe
- SSMH - Sanitary Sewer Manhole

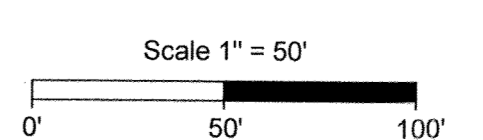
Legend

- ⊙ - IPF - Iron Pipe Found
- - IRF - Iron Rod Found
- ⊠ - CMF - Concrete Monument Found
- ▲ - T.B.M. - Temporary Bench Mark
- ⊕ - Sanitary Manhole
- ⊙ - Satellite Dish
- ⊠ - Electric Box
- ⊠ - Telephone Pedestal
- ⊠ - Cable TV Pedestal
- - Sign
- ⊙ - Electric Meter
- ⊙ - Power Pole
- ⊙ - Light Pole
- - Drainage structure
- - Bollard
- ⊠ - Air Conditioner Unit
- ⊠ - Mailbox
- ⊙ - Yard Light
- ⊠ - Wall
- - Guy
- - Tree
- ⊠ - Handicap Parking
- ⊠ - Tank

- - Surveyed Property Line
- - Tie Line
- - Line Not Surveyed
- - Flood Zone Line
- - SAN - Sanitary Sewer Line
- - Fence
- - OHP - Overhead Power Line
- - G - Painted Gas Line
- - UGP - Painted Power Line
- - Storm / Pipe
- - UGT - Painted Telephone Line
- - W - Painted Water Line
- - Edge of Tree Line
- - UFO - Painted Fiber Optic Line
- - UCATV - Painted Cable TV Line
- - UTL - Creek Contourline
- - Utility Line
- - Easement Line
- - Right of Way Line
- - Edge of Pavement
- - Curb and Gutter



Topographic Exhibit prepared for
Hopper Communities, Inc.
5109 Mitchell Mill Road
Wake Forest, North Carolina



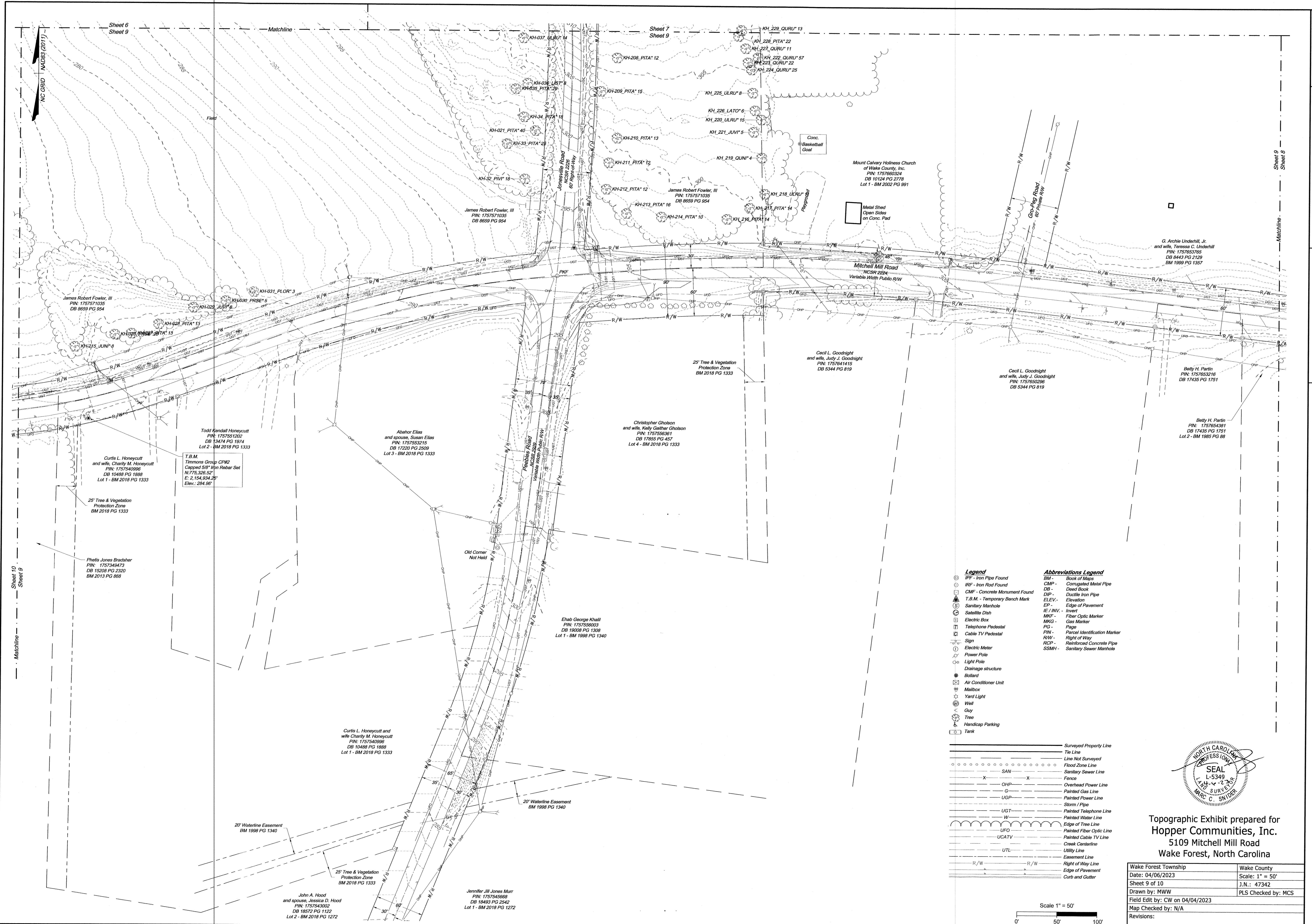
Wake Forest Township	Wake County
Date: 04/06/2023	Scale: 1" = 50'
Sheet 8 of 10	J.N.: 47342
Drawn by: MWW	PLS Checked by: MCS
Field Edit by: CW on 04/04/2023	
Map Checked by: N/A	
Revisions:	

THIS DRAWING PREPARED AT THE
RALEIGH OFFICE
5410 TRINITY ROAD, Suite 102 | RALEIGH, NC 27607
TEL 919.856.4951 FAX 919.859.5663 www.timmons.com
NORTH CAROLINA LICENSE NUMBER C-1652

YOUR VISION ACHIEVED THROUGH OURS.

TIMMONS GROUP

Y:\2023\23-05-19_Mitchell_Mill_Road_Survey\Drawings\Sheet 8.dwg | Printed on 3/8/2023 10:24 AM | By: G000001 | C:\Users\G000001



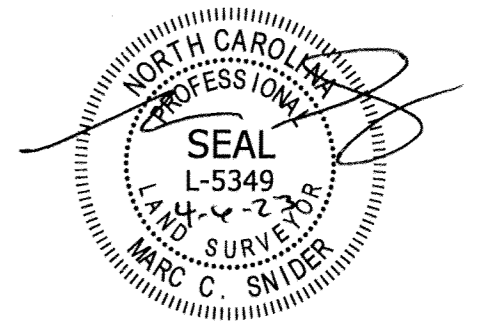
Sheet 6
Sheet 9

Sheet 7
Sheet 9

Sheet 9
Sheet 8

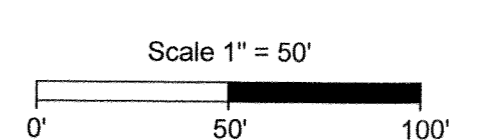
Sheet 10
Sheet 9

Legend		Abbreviations Legend	
⊙	IPF - Iron Pipe Found	BM -	Book of Maps
⊙	IRF - Iron Rod Found	CHP -	Corrugated Metal Pipe
⊙	CMF - Concrete Monument Found	DB -	Dead Book
⊙	T.B.M. - Temporary Bench Mark	DIP -	Ductile Iron Pipe
⊙	Sanitary Manhole	ELEV -	Elevation
⊙	Satellite Dish	EP -	Edge of Pavement
⊙	Electric Box	IE / INV -	Invert
⊙	Telephone Pedestal	MKF -	Fiber Optic Marker
⊙	Cable TV Pedestal	MKG -	Gas Marker
⊙	Sign	PG -	Page
⊙	Electric Meter	PIN -	Parcel Identification Marker
⊙	Power Pole	R/W -	Right of Way
⊙	Light Pole	RCP -	Reinforced Concrete Pipe
⊙	Drainage structure	SSMH -	Sanitary Sewer Manhole
⊙	Bollard		
⊙	Air Conditioner Unit		
⊙	Mailbox		
⊙	Yard Light		
⊙	Well		
⊙	Guy		
⊙	Tree		
⊙	Handicap Parking		
⊙	Tank		
---	Surveyed Property Line		
---	Tie Line		
---	Line Not Surveyed		
---	Flood Zone Line		
---	Sanitary Sewer Line		
---	Fence		
---	Overhead Power Line		
---	Painted Gas Line		
---	UGP -		
---	Painted Power Line		
---	Storm Pipe		
---	UGT -		
---	Painted Telephone Line		
---	W -		
---	Painted Water Line		
---	Edge of Tree Line		
---	UFO -		
---	Painted Fiber Optic Line		
---	UCATV -		
---	Painted Cable TV Line		
---	Creek Centerline		
---	Utility Line		
---	UTL -		
---	Painted Cable TV Line		
---	Easement Line		
---	R/W -		
---	Right of Way Line		
---	Edge of Pavement		
---	Curb and Gutter		



Topographic Exhibit prepared for
Hopper Communities, Inc.
5109 Mitchell Mill Road
Wake Forest, North Carolina

Wake Forest Township	Wake County
Date: 04/06/2023	Scale: 1" = 50'
Sheet 9 of 10	J.N.: 47342
Drawn by: MWW	PLS Checked by: MCS
Field Edit by: CW on 04/04/2023	
Map Checked by: N/A	
Revisions:	



THIS DRAWING PREPARED AT THE
RALEIGH OFFICE
5410 TRINITY ROAD, Suite 102 | RALEIGH, NC 27607
TEL 919.866.4951 FAX 919.859.5663 www.timmons.com
NORTH CAROLINA LICENSE NUMBER C-1632

YOUR VISION ACHIEVED THROUGH OURS.

TIMMONS GROUP

Y:\2023\240510_04_Mitchell_Mill\042723\DWG\MSURV.dwg | Ploose on 3/30/2024 11:24 AM | by Giovanni Gabuis

