



| Schedule   |       |          |  |                 |                   |
|--|-------|----------|--|-----------------|-------------------|
| Symbol   | Label | Quantity | Description                                  | Lumens Per Lamp | Light Loss Factor |
|  | A     | 49       | LED 50w Roadway - Type III - 3000K - Street  | 5312            | 0.85              |
|  | B     | 5        | LED 50w Roadway - Type III - 3000K - Parking | 5312            | 0.85              |

Outdoor Lighting



MICRO LED ROADWAY  
Blacks Dark Sky Certified

Light source: LED (white)

Wattage: 50 watts, 70 watts

Lumens: 5,232 - 8,370

Light pattern: ESNA Type II, III, V

IESNA cutoff classification: Full cutoff

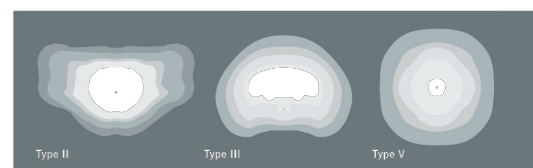
BUG rating: Type II = (B1)UG2 (50w)

Type III = (B1)UG2 (70w)

Type V = (B3)UG1 (50w only)

Type V = (B3)UG1 (50w only)

Color temperature: 3,000K



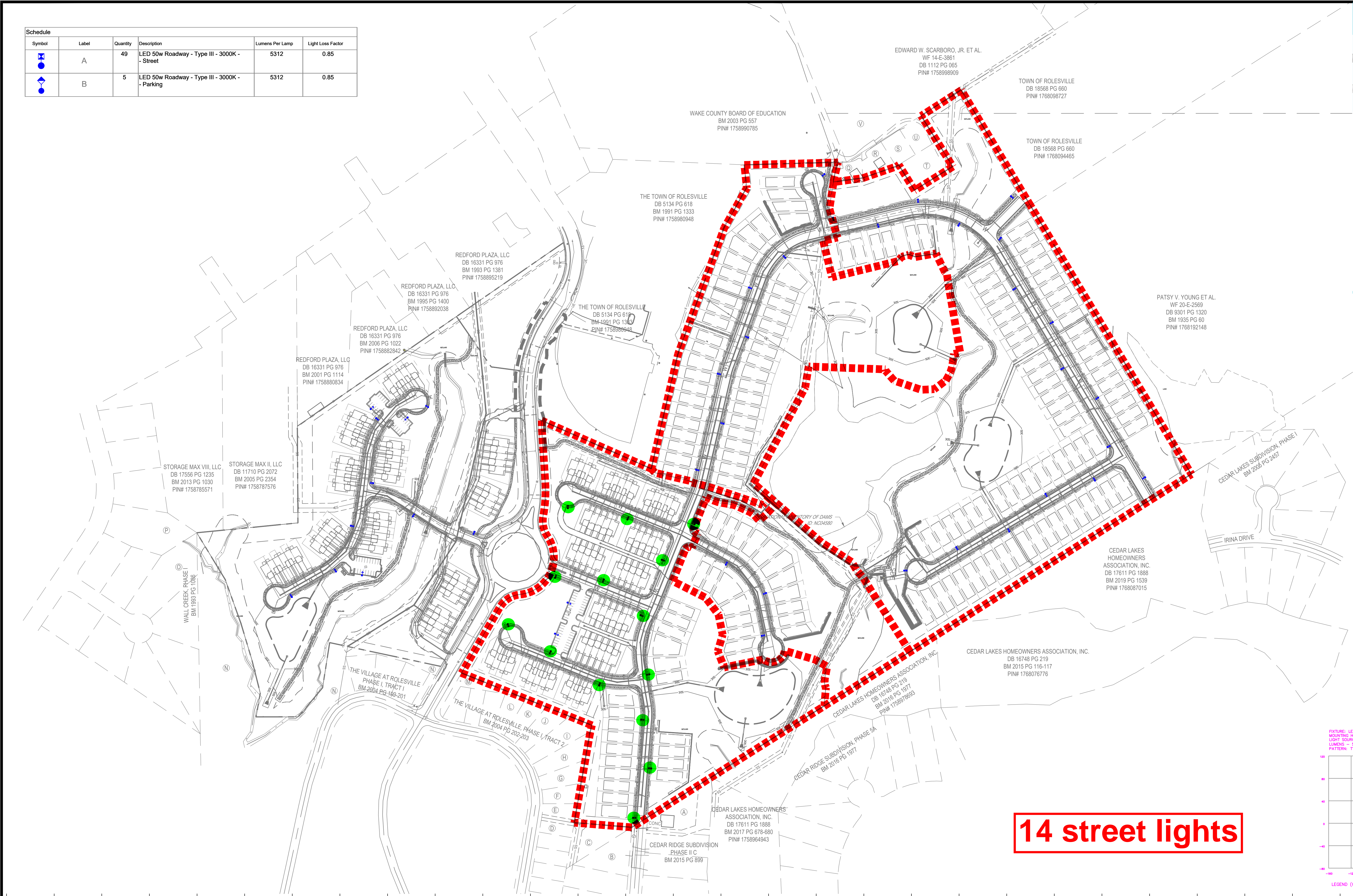
| POLE AVAILABLE             | MOUNTING HEIGHT | COLOR                         |
|----------------------------|-----------------|-------------------------------|
| Fiberglass                 | 25', 30', 35'   | Gray, Black (additional cost) |
| Wood                       | 25', 30', 35'   | Stained                       |
| Metal (Special conditions) | 25', 30', 35'   | Galvanized                    |

| FEATURES   | BENEFITS   |
|--|--|
| Turnkey operation                                  | Provides hassle-free installation and service    |
| Little or no installation cost                     | Frees up capital for other projects              |
| Design services by lighting professionals included | Meets industry standards and lighting ordinances |
| Maintenance, electricity & warranty included       | Eliminates high and unexpected repair bills      |
| One low monthly cost on your electric bill         | Convenience and savings for you                  |

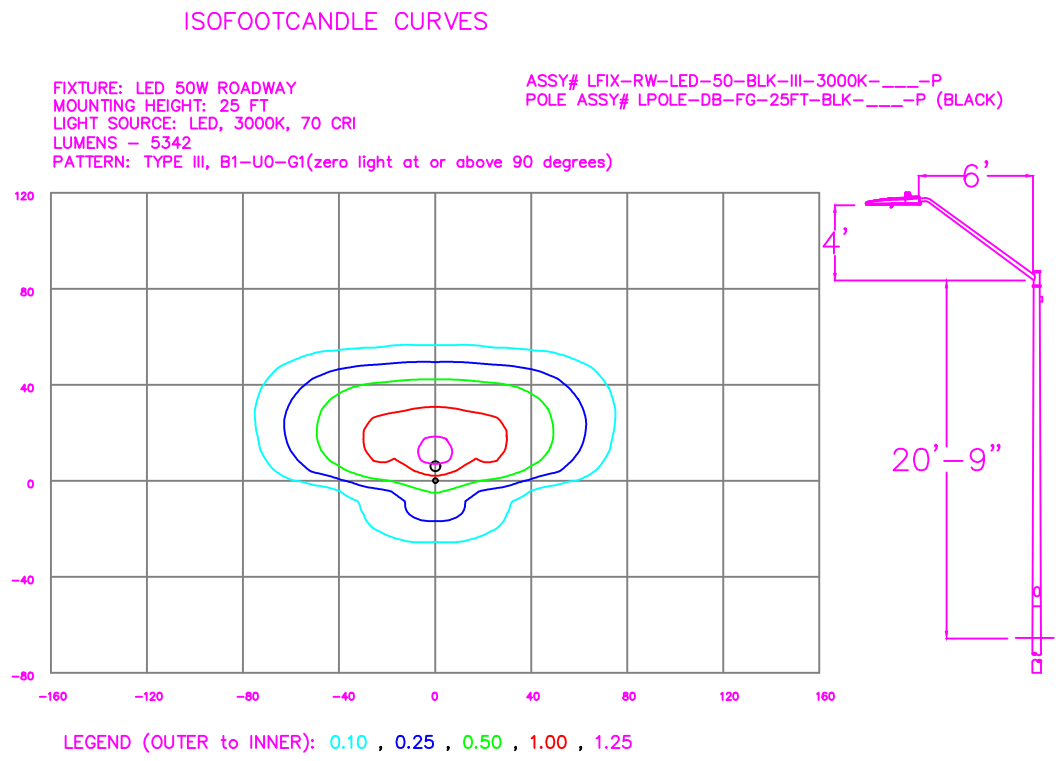
For additional information, contact us at 1-800-444-4444 or duke-energy.com



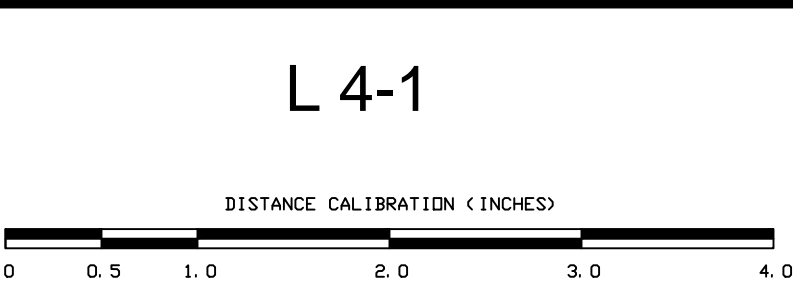
©2022 Duke Energy Progress. 000004 001 001



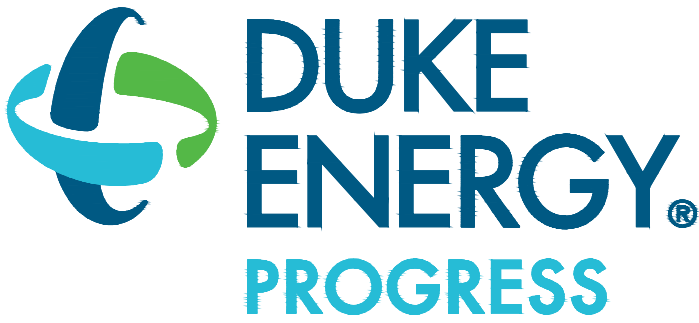
14 street lights



| NO. | DATE | REVISION | BY |
|-----|------|----------|----|
|     |      |          |    |
|     |      |          |    |
|     |      |          |    |
|     |      |          |    |



**LIGHTING DESIGN TOLERANCE**  
The calculated footcandle light levels in this lighting design are predicted values and are based on specific information that has been supplied to Duke Energy. Any inaccuracies in the supplied information, differences in luminaire installation, lighted area geometry including elevation differences, reflective properties of surrounding surfaces, obstructions (foliage or otherwise) in the lighted area, or lighting from sources other than listed in this design may produce different results from the predicted values. Normal tolerances of voltage, lamp output, and ballast and luminaire manufacture will also affect results.



**PROPRIETARY & CONFIDENTIAL**  
This document together with the concepts and designs presented herein, presented as an instrument of service, is the sole property of Duke Energy, and is intended only for the specific purpose and prospective client as stated in the title block of this drawing. Any use, copying, reproduction or disclosure of the drawing, design or any information contained herein by the prospective customer or other entities, including without limitation, architects, engineers, or equipment manufacturers is hereby expressly prohibited and shall not be permitted absent prior written consent from, and payment of compensation to Duke Energy. Duke Energy disclaims any liability or responsibility for any unauthorized use of or reliance on this document.

|                                |   |                       |
|--------------------------------|---|-----------------------|
| PARKER RIDGE<br>Rolesville, NC |   |                       |
| SITE LIGHTING ARRANGEMENT      |   |                       |
| Designed by                    | DUKE ENERGY PROGRESS LIGHTING SOLUTIONS |                       |
| Reviewed by                    | N. Johnson                              | Scale 1" = 150'       |
| Date                           | 07/18/2023                              | Size Drawing size "D" |
| Description                    | LED Roadway                             |                       |
| Drawing No.                    | 23-0308A                                | Sht. 1 OF 1           |