

UTILITY NOTES

- 1. ALL UTILITY DESIGN AND CONSTRUCTION SHALL BE IN ACCORDANCE WITH ALL CITY OF RALEIGH DEPARTMENT OF PUBLIC UTILITIES (CORPUD) STANDARDS AND SPECIFICATIONS. UTILITY DESIGN SHALL ALSO MEET FIRE FLOW REQUIREMENTS OF NCF.
2. UTILITY SIZES AND LOCATIONS ARE SHOWN FOR ILLUSTRATIVE PURPOSES ONLY AND ARE SUBJECT TO CHANGE BASED ON FINAL DESIGN AND CONSTRUCTION DRAWING APPROVAL. THIS SHALL INCLUDE BUT NOT LIMITED TO FIRE HYDRANT LOCATIONS.
3. ANY EXISTING WATER AND SEWER LINES TO BE USED AS PART OF THE FINAL DESIGN OF THE PROJECT, SHALL BE LOCATED BY SURVEY, TESTED BY A LICENSED CONTRACTOR AND APPROVED BY THE CITY OF RALEIGH INSPECTOR PRIOR TO SUBMITTAL OF CONSTRUCTION DRAWINGS.
4. AS PART OF CONSTRUCTION DRAWING SUBMITTAL, FIRE FLOW CALCULATIONS SHALL BE PROVIDED SHOWING COMPLIANCE WITH NCF. PROJECT MAY BE DEVELOPED IN PHASES AND ALL PHASES SHALL BE REQUIRED TO MEET THE MINIMUM REQUIRED FIRE FLOWS PER OCCUPANCY PROPOSED IN EACH PHASE.
5. AN APPROVED WATER SUPPLY FOR FIRE SUPPRESSION (TEMPORARY OR PERMANENT) SHALL BE PROVIDED AS SOON AS COMBUSTIBLE MATERIALS ARRIVE ON SITE.
6. UTILITY CONSTRUCTION APPROVAL IS REQUIRED FOR THIS PROJECT, PLANS TO BE PREPARED BY NC PROFESSIONAL ENGINEER.
7. RIGHT OF WAY AND/OR EASEMENT DEDICATION PLAT IS REQUIRED FOR THIS PROJECT (PRIOR TO CITY ACCEPTANCE OF UTILITIES).
8. ALL NECESSARY WETLAND, RIPARIAN BUFFER AND FLOODPLAIN PERMITS FROM USACE, NCDWQ & FEMA SHALL BE OBTAINED PRIOR TO CONSTRUCTION.
9. PROJECT SHALL EXTEND PUBLIC WATER MAINS ALONG ALL INTERIOR AND ABUTTING RIGHT OF WAYS OF DEVELOPMENT.
10. FIRE HYDRANT ASSEMBLIES SHALL BE INSTALLED AT EVERY INTERSECTION AND AT 500' (RESIDENTIAL) MAX INTERVALS ALONG SITE FRONTAGE.
11. ALL MAINS UP TO 12 INCHES IN SIZE SHALL BE DESIGNED WITH A BLOW-OFF ASSEMBLY THE SAME SIZE AS THE DIAMETER OF THE PIPE.
12. ALL WATER MAINS SHALL BE PRESSURE CLASS OR THICKNESS CLASS DUCTILE IRON PIPE DESIGNED IN ACCORDANCE WITH AWWA STANDARD C-150.
13. PROJECT SHALL EXTEND PUBLIC GRAVITY SEWER TO PERIPHERY OF DEVELOPMENT BASED ON NATURAL TOPOGRAPHY.
14. ALL CITY OF RALEIGH SANITARY SEWER EASEMENTS SHALL BE A MINIMUM OF 30 FEET.
15. THE SANITARY SEWER DESIGN SHALL BE EVALUATED DURING THE CONSTRUCTION DRAWING REVIEW TO ENSURE ADJACENT PROPERTIES HAVE ACCESS TO SANITARY SEWER WHERE FEASIBLE AND IN COMPLIANCE WITH THE CITY OF RALEIGH PUBLIC UTILITIES DEPARTMENT STANDARDS AND SPECIFICATIONS.
16. ALL OFF-SITE EASEMENTS SHALL BE ACQUIRED BY THE DEVELOPER. THESE OFF-SITE EASEMENTS SHALL BE RECORDED BY MAP AND BY DEED OF EASEMENT PRIOR TO CONSTRUCTION APPROVAL. THE EASEMENTS SHALL BE DEDICATED TO THE CITY OF RALEIGH AND ENTITLED "CITY OF RALEIGH SANITARY SEWER EASEMENT".
17. MAINTAIN APPROPRIATE COVER AND SEPARATION ON UTILITIES AND LABEL IN PROFILES; ANY UTILITY CROSSINGS ARE SUBJECT TO MINIMUM REQUIREMENTS.
18. CONSTRUCTION APPROVAL WILL BE REQUIRED FOR ANY EXTENSIONS OF PUBLIC WATER OR SEWER MAINS.
19. PLAT RECORDATION REQUIRED AFTER CONSTRUCTION APPROVAL PRIOR TO BUILDING PERMIT.
20. DOT ENCROACHMENT AGREEMENT REQUIRED.
21. PRIVATE WATER SERVICES SIZED 3/4" - 2" SHOULD BE TYPE "K" SOFT COPPER AND IN ACCORDANCE WITH PU HANDBOOK, APP. B. STANDARD WATER DETAIL W-23 AND W-25. IF WATER METERS CANNOT BE LOCATED WITHIN THE RIGHT-OF-WAY THEY MUST BE WITHIN RECORDED "CITY OF RALEIGH WATERLINE EASEMENTS".

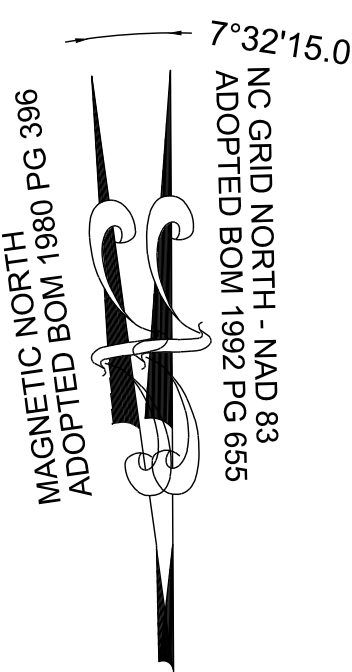
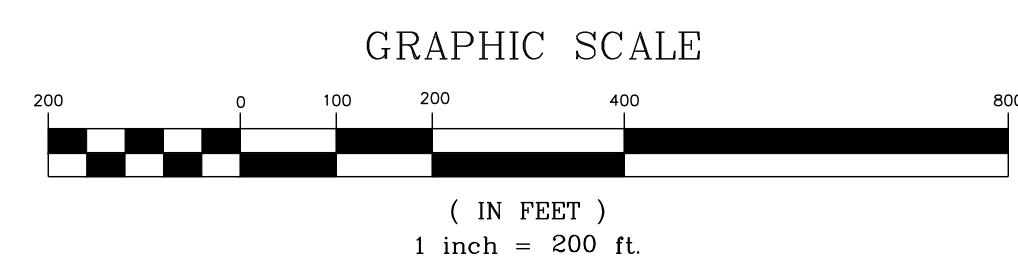
CORPUD STANDARD UTILITY NOTES:

STANDARD UTILITY NOTES (AS APPLICABLE):

- 1. ALL MATERIALS & CONSTRUCTION METHODS SHALL BE IN ACCORDANCE WITH CITY OF RALEIGH DESIGN STANDARDS, DETAILS & SPECIFICATIONS (REFERENCE: CORPUD HANDBOOK, CURRENT EDITION).
2. UTILITY SEPARATION REQUIREMENTS:
a) A DISTANCE OF 100" SHALL BE MAINTAINED BETWEEN SANITARY SEWER & ANY PRIVATE OR PUBLIC WATER SUPPLY SOURCE SUCH AS AN IMPOUNDED RESERVOIR USED AS A SOURCE OF DRINKING WATER. IF ADEQUATE LATERAL SEPARATION CANNOT BE ACHIEVED, FERROUS SANITARY SEWER PIPE SHALL BE SPECIFIED & INSTALLED TO WATERLINE SPECIFICATIONS. HOWEVER, THE MINIMUM SEPARATION SHALL NOT BE LESS THAN 25" FROM A PRIVATE WELL OR 50" FROM A PUBLIC WELL.
b) WHEN INSTALLING WATER &/OR SEWER MAINS, THE HORIZONTAL SEPARATION BETWEEN UTILITIES SHALL BE 10". IF THIS SEPARATION CANNOT BE MAINTAINED DUE TO EXISTING CONDITIONS, THE VARIATION ALLOWED IS THE WATER MAIN IN A SEPARATE TRENCH WITH THE ELEVATION OF THE WATER MAIN AT LEAST 18" ABOVE THE TOP OF THE SEWER & MUST BE APPROVED BY THE PUBLIC UTILITIES DIRECTOR. ALL DISTANCES ARE MEASURED FROM OUTSIDE DIAMETER TO OUTSIDE DIAMETER.
c) WHERE IT IS IMPOSSIBLE TO OBTAIN PROPER SEPARATION, OR ANYTIME A SANITARY SEWER PASSES OVER A WATERMAIN, PVC MATERIALS OR STEEL ENCASUREMENT EXTENDED 10" ON EACH SIDE OF CROSSING MUST BE SPECIFIED & INSTALLED TO WATERLINE SPECIFICATIONS.
d) 5.0' MINIMUM HORIZONTAL SEPARATION IS REQUIRED BETWEEN ALL SANITARY SEWER & STORM SEWER FACILITIES, UNLESS PVC MATERIAL IS SPECIFIED FOR SANITARY SEWER.
e) MAINTAIN 18" MIN. VERTICAL SEPARATION AT ALL WATERMAIN & RCP STORM DRAIN CROSSINGS. MAINTAIN 24" MIN. VERTICAL SEPARATION AT ALL SANITARY SEWER & RCP STORM DRAIN CROSSINGS. WHERE ADEQUATE SEPARATIONS CANNOT BE ACHIEVED, SPECIFY PVC MATERIALS & A CONCRETE CRADLE HAVING 6" MIN. CLEARANCE (PER CORPUD DETAILS W-41 & S-49).
f) ALL OTHER UNDERGROUND UTILITIES SHALL CROSS WATER & SEWER FACILITIES WITH 18" MIN. VERTICAL SEPARATION REQUIRED.
3. ANY NECESSARY FIELD REVISIONS ARE SUBJECT TO REVIEW & APPROVAL OF AN AMENDED PLAN &/OR PROFILE BY THE CITY OF RALEIGH PUBLIC UTILITIES DEPARTMENT PRIOR TO CONSTRUCTION.
4. CONTRACTOR SHALL MAINTAIN CONTINUOUS WATER & SEWER SERVICE TO EXISTING RESIDENCES & BUSINESSES THROUGHOUT CONSTRUCTION OF PROJECT. ANY NECESSARY SERVICE INTERRUPTIONS SHALL BE PRECEDED BY A 24 HOUR ADVANCE NOTICE TO THE CITY OF RALEIGH PUBLIC UTILITIES DEPARTMENT.
5. 3.0' MINIMUM COVER IS REQUIRED ON ALL WATER MAINS & SEWER FORCEMAINS. 4.0' MINIMUM COVER IS REQUIRED ON ALL REUSE MAINS.
6. IT IS THE DEVELOPER'S RESPONSIBILITY TO ABANDON OR REMOVE EXISTING WATER & SEWER SERVICES NOT BEING USED IN REDEVELOPMENT OF A SITE UNLESS OTHERWISE DIRECTED BY THE CITY OF RALEIGH PUBLIC UTILITIES DEPARTMENT. THIS INCLUDES ABANDONING TAP AT MAIN & REMOVAL OF SERVICE FROM ROW OR EASEMENT PER CORPUD HANDBOOK PROCEDURE.
7. INSTALL 3/4" COPPER WATER SERVICES WITH METERS LOCATED AT ROW OR WITHIN A 2'X2' WATERLINE EASEMENT IMMEDIATELY ADJACENT. NOTE: IT IS THE APPLICANT'S RESPONSIBILITY TO PROPERLY SIZE THE WATER SERVICE FOR EACH CONNECTION TO PROVIDE ADEQUATE FLOW & PRESSURE.
8. INSTALL 4" PVC SEWER SERVICES @ 1.0% MINIMUM GRADE WITH CLEANOUTS LOCATED AT ROW OR EASEMENT LINE & SPACED EVERY 75 LINEAR FEET MAXIMUM.
9. PRESSURE REDUCING VALVES ARE REQUIRED ON ALL WATER SERVICES EXCEEDING 80 PSI. BACKWATER VALVES ARE REQUIRED ON ALL SANITARY SEWER SERVICES HAVING BUILDING DRAINS LOWER THAN 1.0' ABOVE THE NEXT UPSTREAM MANHOLE.
10. ALL ENVIRONMENTAL PERMITS APPLICABLE TO THE PROJECT MUST BE OBTAINED FROM NCDWQ, USACE &/OR FEMA FOR ANY RIPARIAN BUFFER, WETLAND &/OR FLOODPLAIN IMPACTS (RESPECTIVELY) PRIOR TO CONSTRUCTION.
11. NCDOT / RAILROAD ENCROACHMENT AGREEMENTS ARE REQUIRED FOR ANY UTILITY WORK (INCLUDING MAIN EXTENSIONS & SERVICE TAPS) WITHIN STATE OR RAILROAD ROW PRIOR TO CONSTRUCTION.
12. GREASE INTERCEPTOR / OIL WATER SEPARATOR SIZING CALCULATIONS & INSTALLATION SPECIFICATIONS SHALL BE APPROVED BY THE CORPUD FOG PROGRAM COORDINATOR PRIOR TO ISSUANCE OF A BUILDING PERMIT. CONTACT TIM BEASLEY AT (919) 996-2334 OR TIMOTHY.BEASLEY@RALEIGHNC.GOV FOR MORE INFORMATION.
13. CROSS-CONNECTION CONTROL PROTECTION DEVICES ARE REQUIRED BASED ON DEGREE OF HEALTH HAZARD INVOLVED AS LISTED IN APPENDIX-B OF THE RULES GOVERNING PUBLIC WATER SYSTEMS IN NORTH CAROLINA. THESE GUIDELINES ARE THE MINIMUM REQUIREMENTS. THE DEVICES SHALL MEET AMERICAN SOCIETY OF SANITARY ENGINEERING (ASSE) STANDARDS OR BE ON THE UNIVERSITY OF SOUTHERN CALIFORNIA APPROVAL LIST. THE DEVICES SHALL BE INSTALLED AND TESTED (BOTH INITIAL AND PERIODIC TESTING THEREAFTER) IN ACCORDANCE WITH THE MANUFACTURER'S RECOMMENDATIONS OR THE LOCAL CROSS-CONNECTION CONTROL PROGRAM, WHICHEVER IS MORE STRINGENT. CONTACT JOANIE HARTLEY AT (919) 996-5923 OR JOANIE.HARTLEY@RALEIGHNC.GOV FOR MORE INFORMATION.

LEGEND:

- W WATER LINE
SS SANITARY SEWER LINE
Water Meter / Service
Sanitary Cleanout / Service
Fire Hydrant Assembly
Gate Valve
TEE
CROSS
BLOW OFF VALVE
Sanitary Manhole



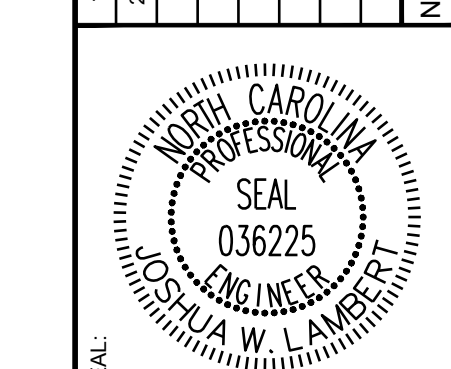
See my comment on the preliminary for this.
SREG: The offsite water line has been adjusted on the approved PSP set, and this CD set shows the adjustment as well, see Sheet C8.0

NOTES:
SEE SHEET C-3.0 FOR ADJACENT PROPERTY DETAILS

TOWNHOME NOTES:
STATES INTERNAL TOWNHOME DRIVEWAYS ARE PRIVATE EASEMENTS AS PER CITY OF RALEIGH PUBLIC UTILITIES DEPARTMENT

THIS PLANSET AND ANY ASSOCIATED DOCUMENTS ARE PRELIMINARY AND NOT AUTHORIZED FOR CONSTRUCTION UNTIL SIGNED, DATED, AND OFFICIALLY RELEASED FOR CONSTRUCTION BY THE ENGINEER OF RECORD.

Table with columns: No., REVISIONS, DATE, BY



STRONGROCK ENGINEERING GROUP
STRONG ROCK ENGINEERING GROUP, PLLC | COMPANY LICENSE # P-2166
305 CHURCH AT NORTH HILLS STREET, SUITE 1110 RALEIGH, NC 27609 | INFORMATION@STRONGROCKGROUP.COM

Table with columns: STRONG ROCK PROJECT, NOT FOR CONSTRUCTION, SCALE, DESIGNED BY, DRAWN BY, CHECKED BY

RESERVE @ MITCHELL MILL
TOWN OF ROLESVILLE, WAKE COUNTY, NORTH CAROLINA
CONSTRUCTION PLANS
OVERALL UTILITY PLAN

DRAWING SHEET
C-8.0

NO.	REVISIONS	DATE	BY
1			
2			

SEAL: NORTH CAROLINA PROFESSIONAL ENGINEER 036225 JUSTIN W. LAMBERT

STRONGROCK

ENGINEERING GROUP

STRONG ROCK ENGINEERING GROUP, PLLC | COMPANY LICENSE # P-2166
305 CHURCH AT NORTH HILLS STREET, SUITE 1110 RALEIGH, NC 27609 | INFORMATION@STRONGROCKGROUP.COM

STRONG ROCK PROJECT	PSP-24-03
NOT FOR CONSTRUCTION	
SCALE	AS SHOWN
DESIGNED BY	JWL
DRAWN BY	SRG
CHECKED BY	JWL

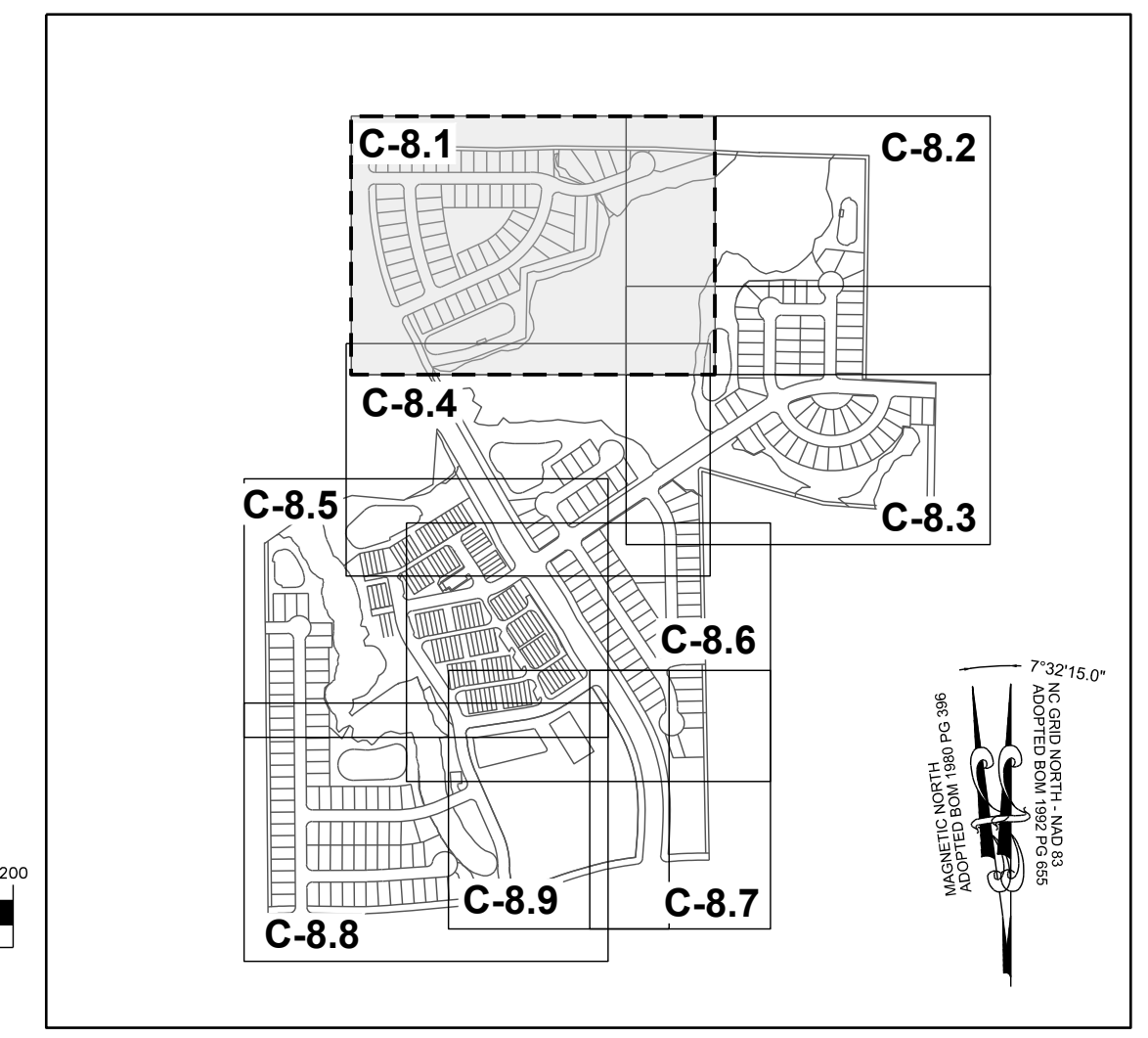
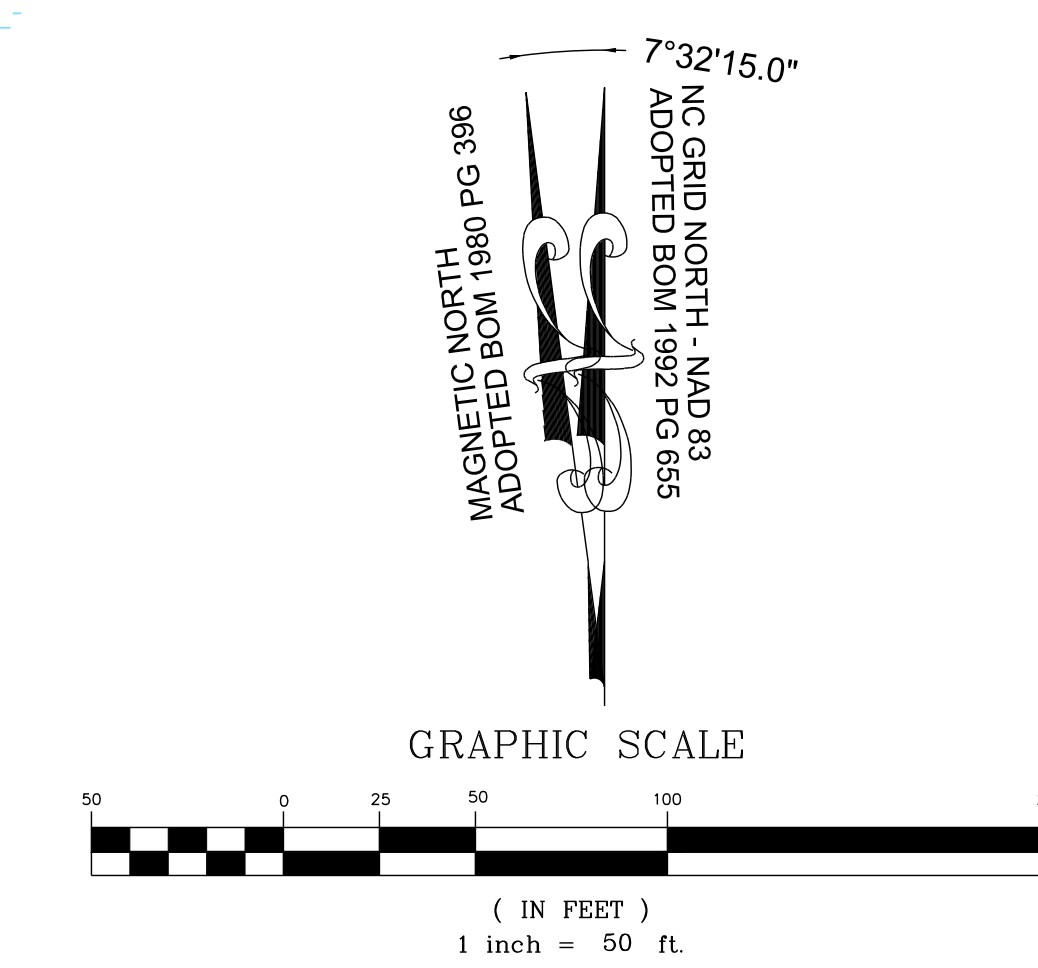
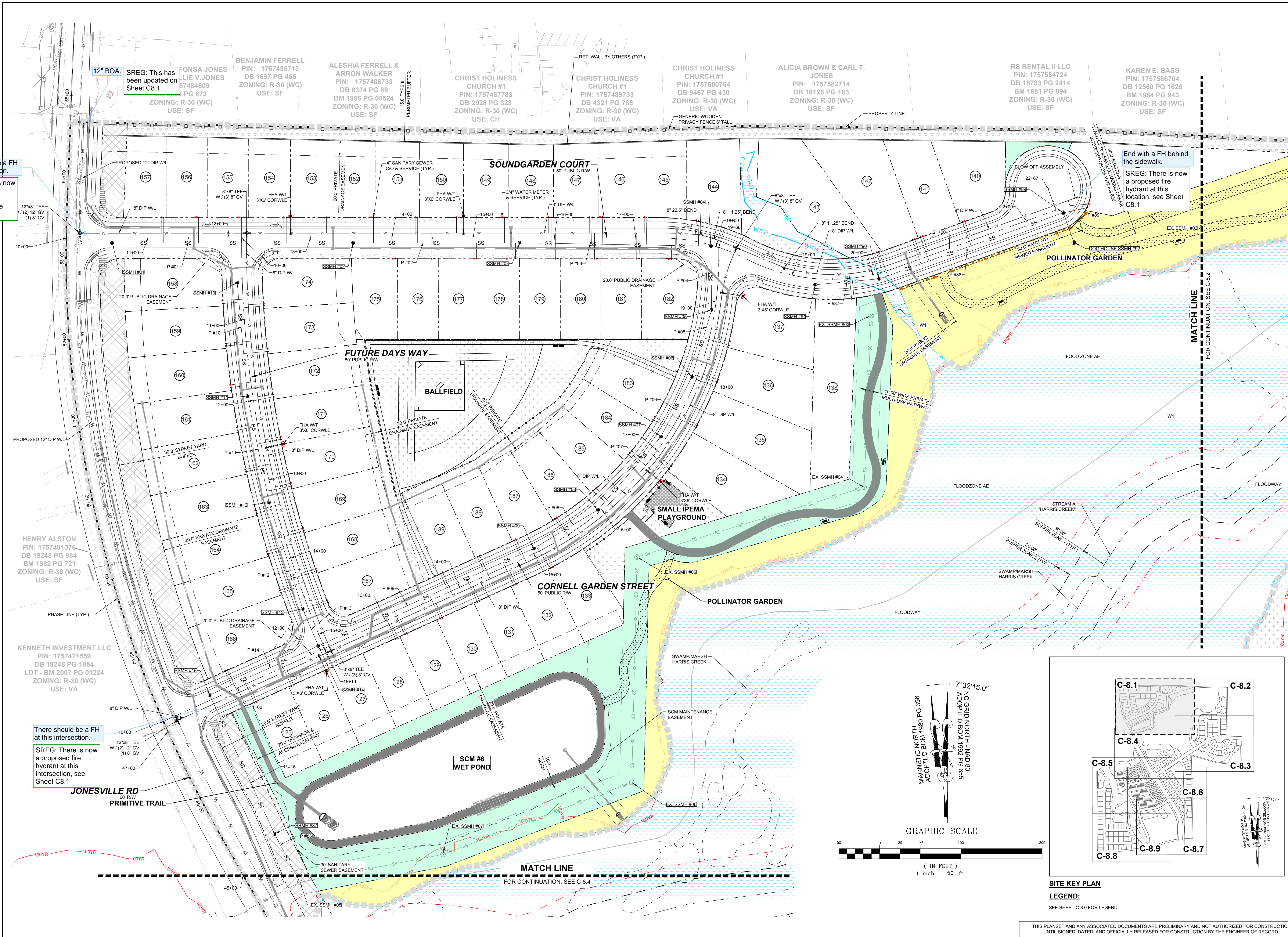
RESERVE @ MITCHELL MILL
TOWN OF ROLESVILLE, WAKE COUNTY, NORTH CAROLINA

CONSTRUCTION PLANS

PARTIAL UTILITY PLAN I

DRAWING SHEET
C-8.1

THIS PLANSET AND ANY ASSOCIATED DOCUMENTS ARE PRELIMINARY AND NOT AUTHORIZED FOR CONSTRUCTION UNTIL SIGNED, DATED, AND OFFICIALLY RELEASED FOR CONSTRUCTION BY THE ENGINEER OF RECORD.



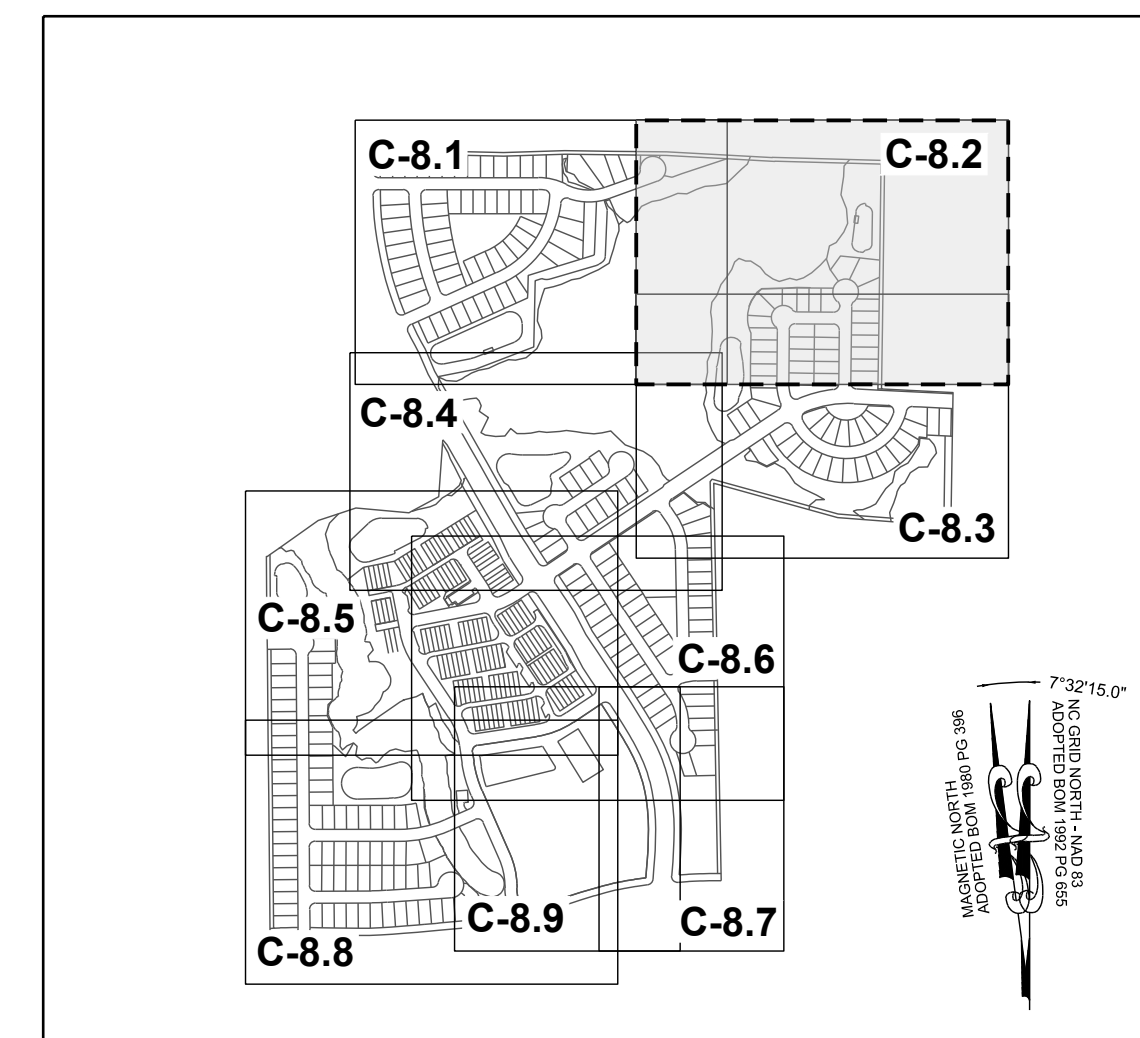
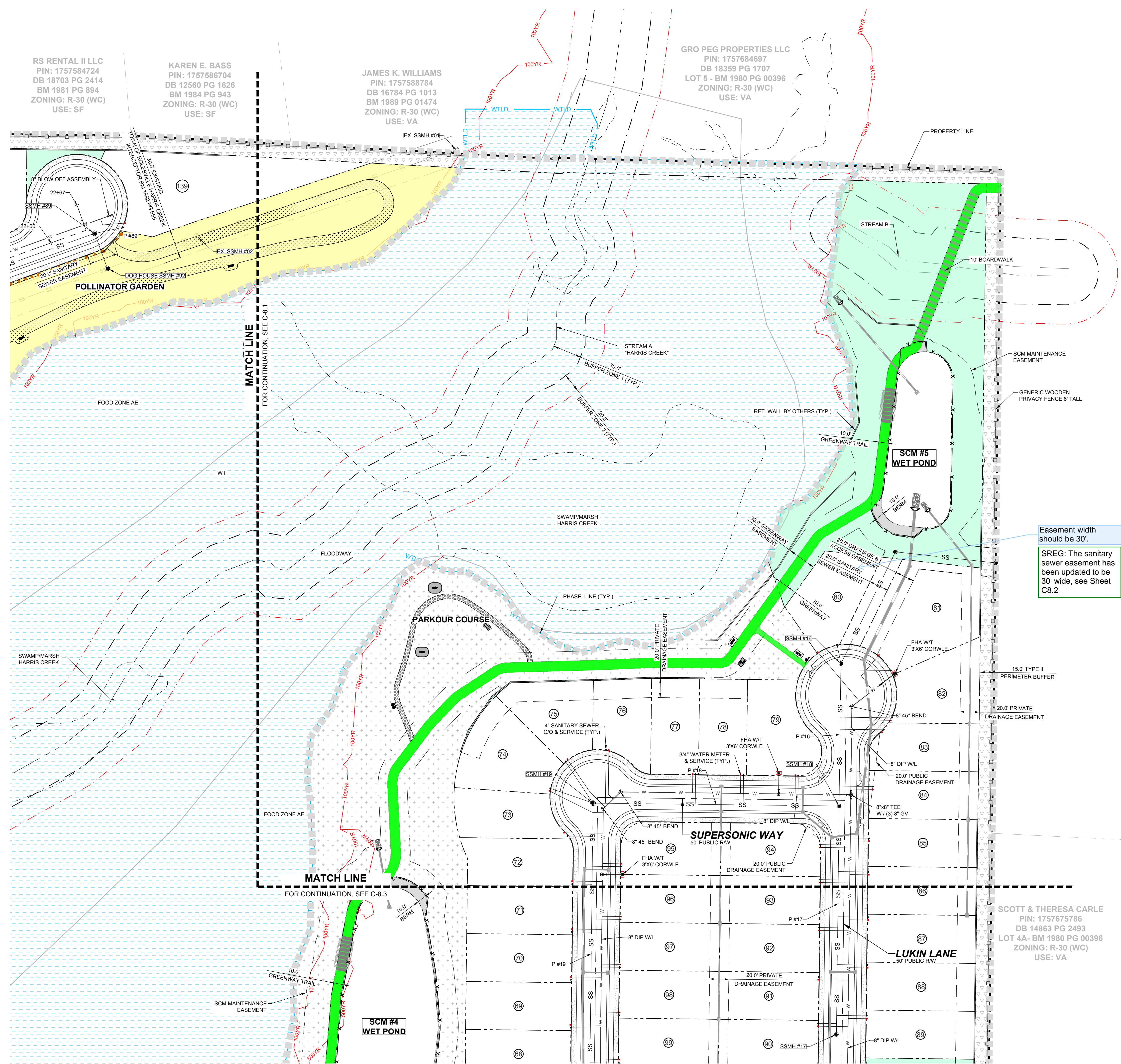
RS RENTAL II LLC
PIN: 1757584724
DB 18703 PG 2414
BM 1981 PG 894
ZONING: R-30 (WC)
USE: SF

KAREN E. BASS
PIN: 1757586704
DB 12560 PG 1626
BM 1984 PG 943
ZONING: R-30 (WC)
USE: SF

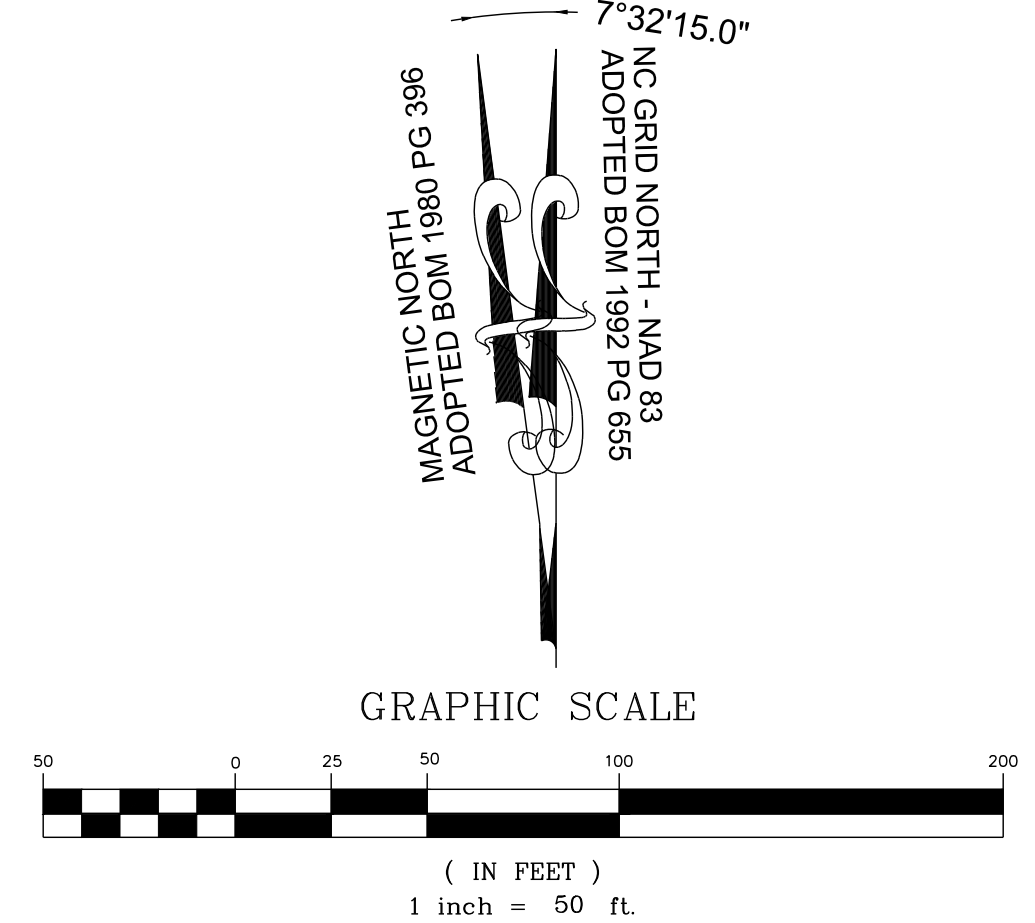
JAMES K. WILLIAMS
PIN: 1757588784
DB 16784 PG 1013
BM 1989 PG 01474
ZONING: R-30 (WC)
USE: VA

GRO PEG PROPERTIES LLC
PIN: 1757684697
DB 18359 PG 1707
LOT 5 - BM 1980 PG 00396
ZONING: R-30 (WC)
USE: VA

SCOTT & THERESA CARLE
PIN: 1757675786
DB 14863 PG 2493
LOT 4A - BM 1980 PG 00396
ZONING: R-30 (WC)
USE: VA



SITE KEY PLAN
LEGEND:
SEE SHEET C-8.0 FOR LEGEND.



Easement width should be 30'.
SREG: The sanitary sewer easement has been updated to be 30' wide, see Sheet C8.2

GRO PEG RD
60' PRIVATE R/W
RECORDED BOOK OF MAPS
1980 PAGE 396

NO.	REVISIONS	DATE	BY
1			
2			

STRONGROCK
ENGINEERING GROUP

STRONG ROCK ENGINEERING GROUP, PLLC | COMPANY LICENSE # P-2166
305 CHURCH AT NORTH HILLS STREET, SUITE 1110 RALEIGH, NC 27609 | INFORMATION@STRONGROCKGROUP.COM

DESIGNED BY: JWL
DRAWN BY: SRG
CHECKED BY: JWL

RESERVE @ MITCHELL MILL
TOWN OF ROLESVILLE, WAKE COUNTY, NORTH CAROLINA
CONSTRUCTION PLANS
PARTIAL UTILITY PLAN II

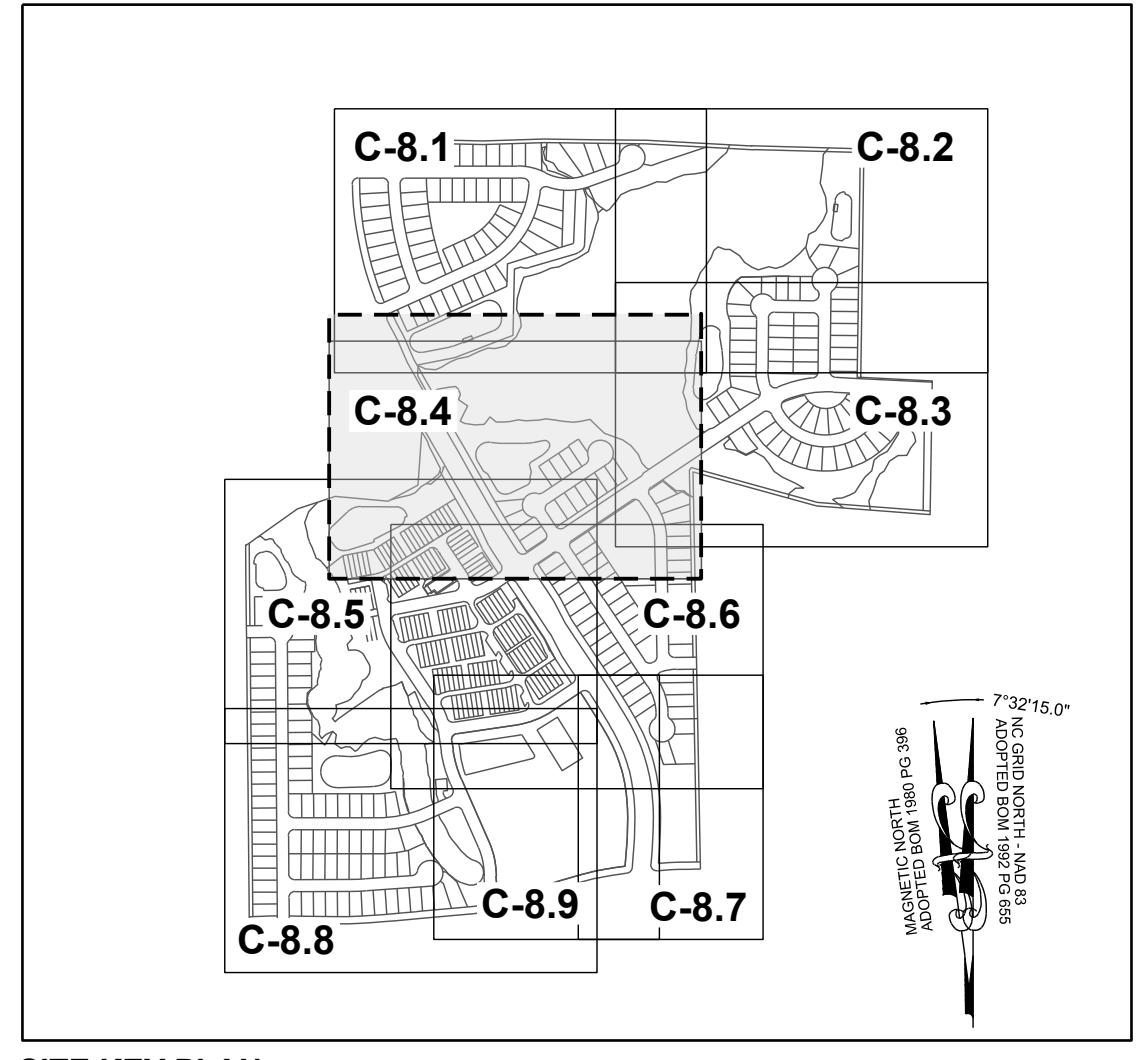
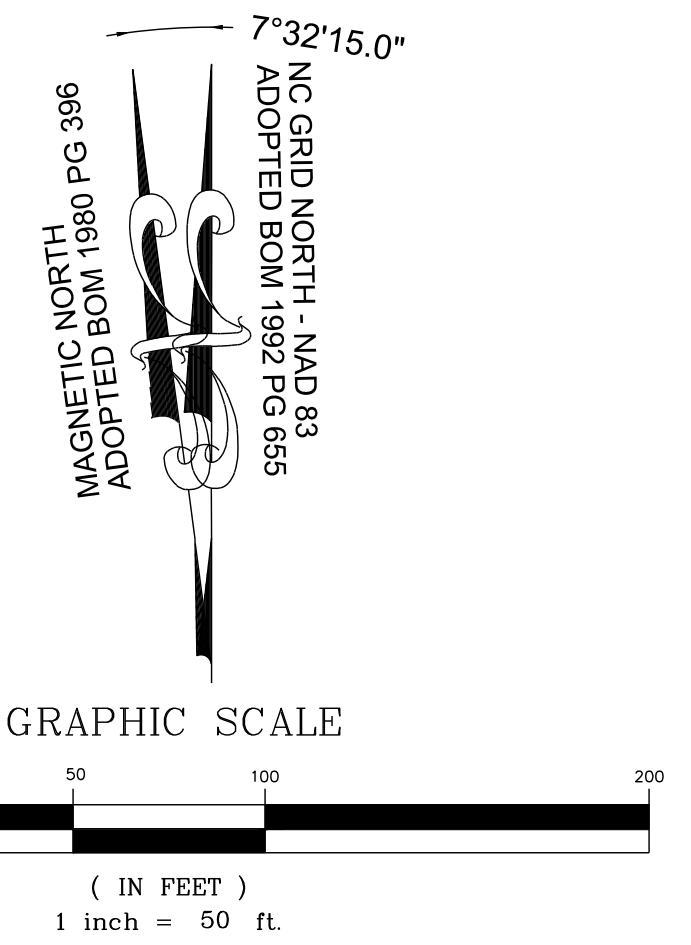
DRAWING SHEET
C-8.2

37 OF 176

THIS PLANSET AND ANY ASSOCIATED DOCUMENTS ARE PRELIMINARY AND NOT AUTHORIZED FOR CONSTRUCTION UNTIL SIGNED, DATED, AND OFFICIALLY RELEASED FOR CONSTRUCTION BY THE ENGINEER OF RECORD.

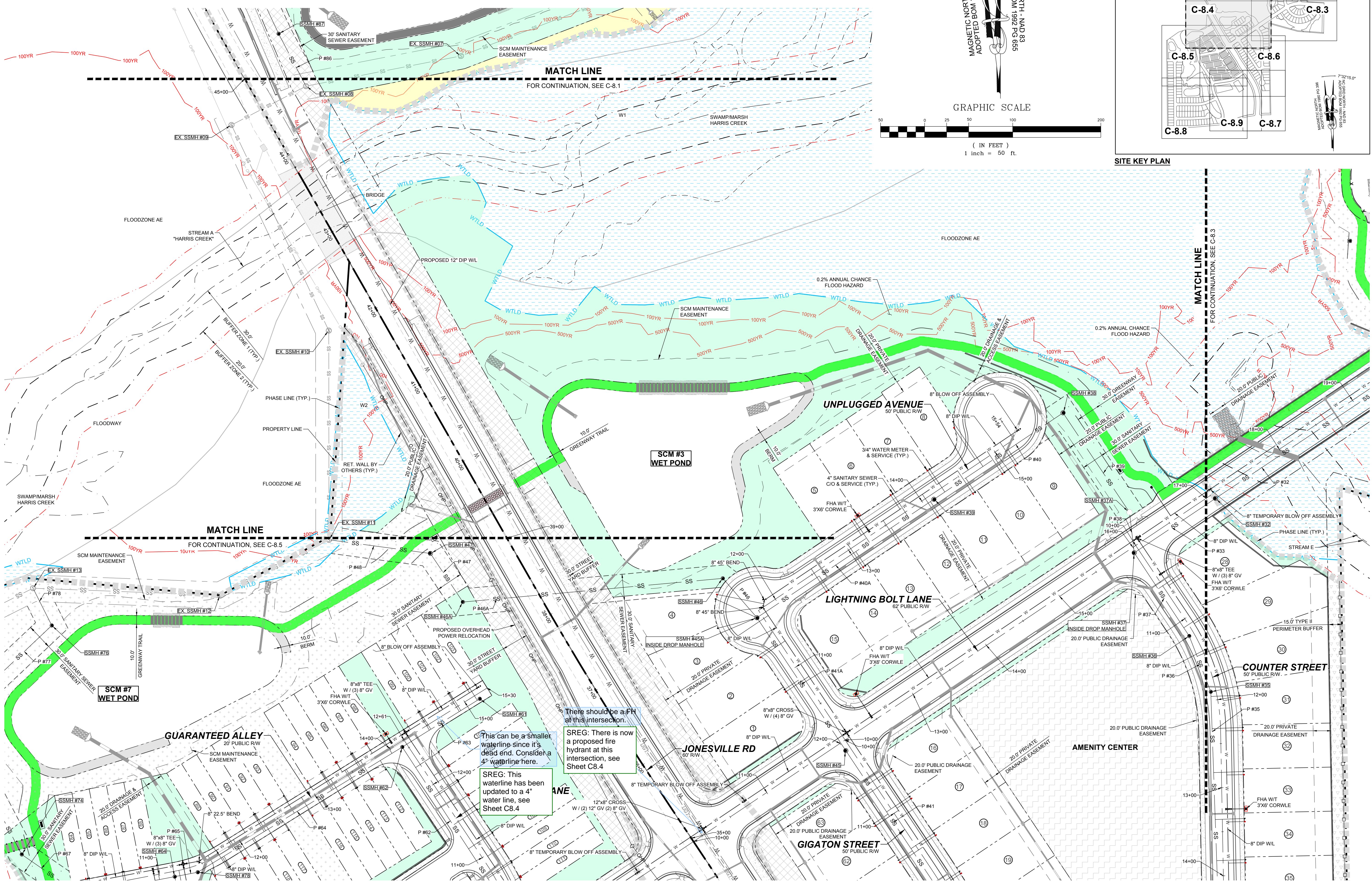
TOWNHOME NOTES:
STATES INTERNAL TOWNHOME DRIVEWAYS ARE PRIVATE EASEMENTS AS PER CITY OF RALEIGH PUBLIC UTILITIES DEPARTMENT

LEGEND:
SEE SHEET C-8.0 FOR LEGEND.



NO.	DATE	REVISIONS	BY
1			
2			

SEAL: NORTH CAROLINA PROFESSIONAL ENGINEER 036225 JUSTIN W. LAMBERT



There should be a FH at this intersection.
SREG: There is now a proposed fire hydrant at this intersection, see Sheet C8.4
SREG: This waterline has been updated to a 4" water line, see Sheet C8.4
This can be a smaller waterline since it's a dead end. Consider a 4" waterline here.

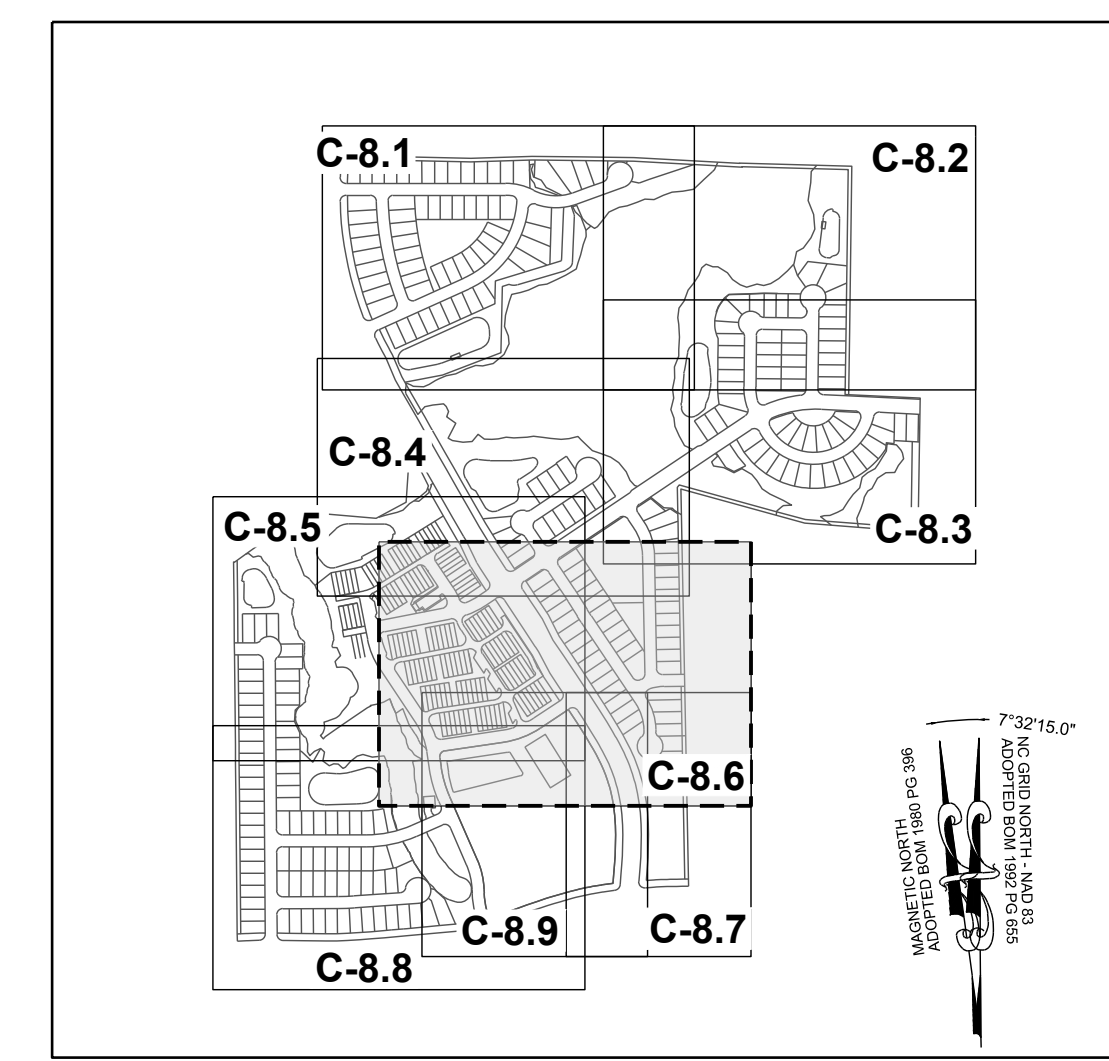
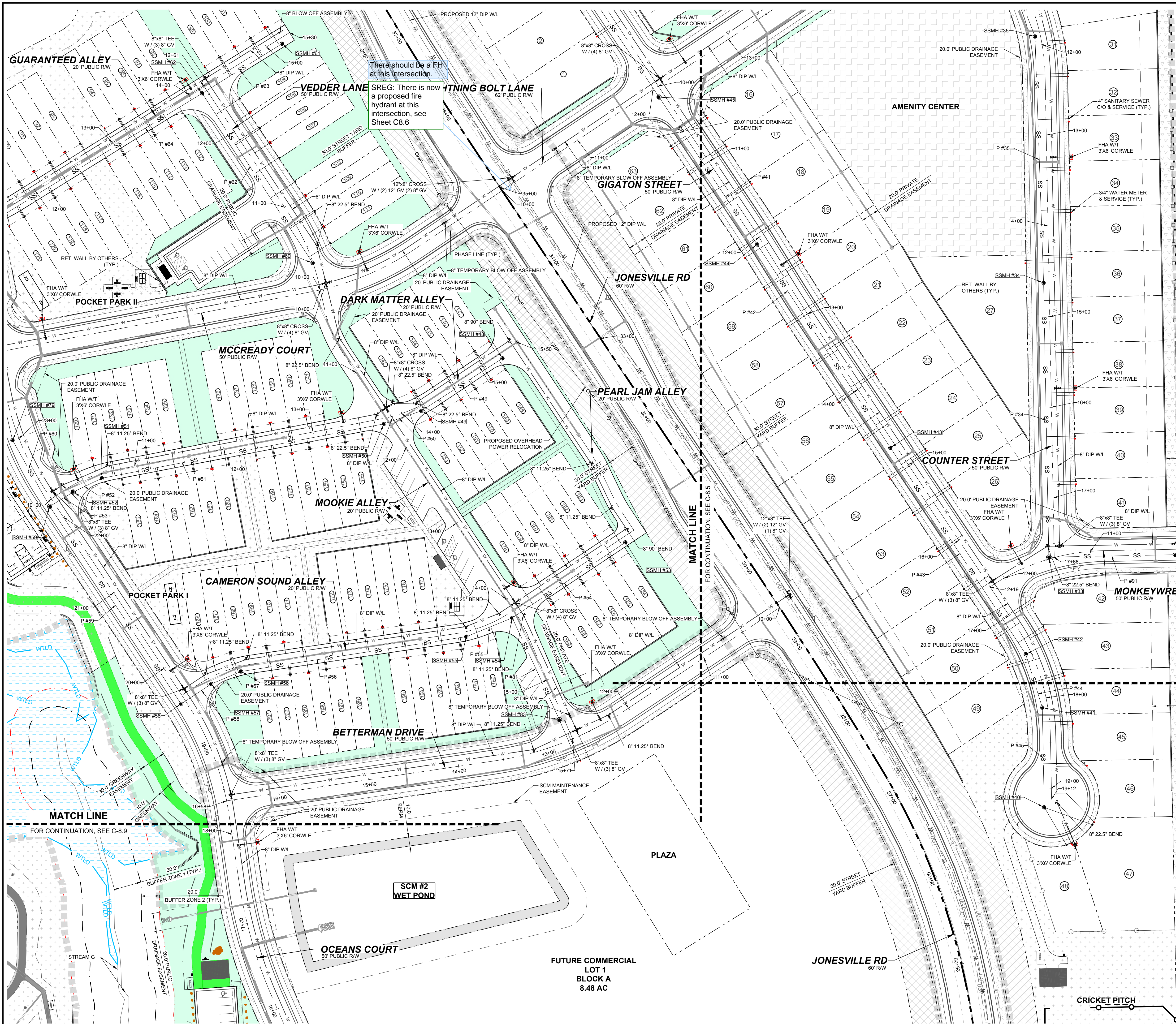
STRONGROCK
ENGINEERING GROUP

STRONG ROCK ENGINEERING GROUP, PLLC | COMPANY LICENSE # P-2166
305 CHURCH AT NORTH HILLS STREET, SUITE 1110 RALEIGH, NC 27609 | INFORMATION@STRONGROCKGROUP.COM

STRONG ROCK PROJECT	DESIGNED BY	DRAWN BY	CHECKED BY
PSP-25-03	JWL	SRG	JWL
NOT FOR CONSTRUCTION	SCALE	AS SHOWN	

RESERVE @ MITCHELL MILL
TOWN OF ROLESVILLE, WAKE COUNTY, NORTH CAROLINA
CONSTRUCTION PLANS
PARTIAL UTILITY PLAN VI

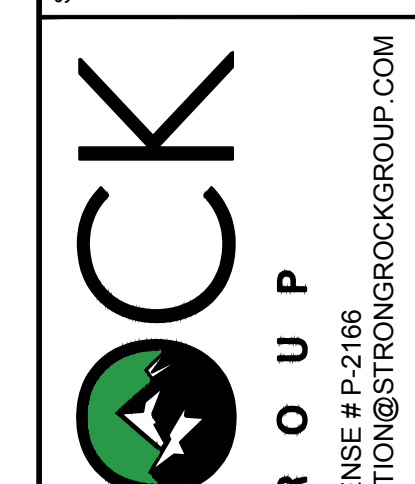
DRAWING SHEET
C-8.4



TOWNHOME NOTES:
 STATES INTERNAL TOWNHOME DRIVEWAYS ARE PRIVATE EASEMENTS AS PER CITY OF RALEIGH PUBLIC UTILITIES DEPARTMENT

SITE KEY PLAN LEGEND:
 SEE SHEET C-8.0 FOR LEGEND.

1	CONSTRUCTION INFRASTRUCTURE DRAWINGS CDD-2044	DATE
2	TOWN OF RALEIGH DATE 02-02-24	REVISIONS
		No.



STRONGROCK
 ENGINEERING GROUP

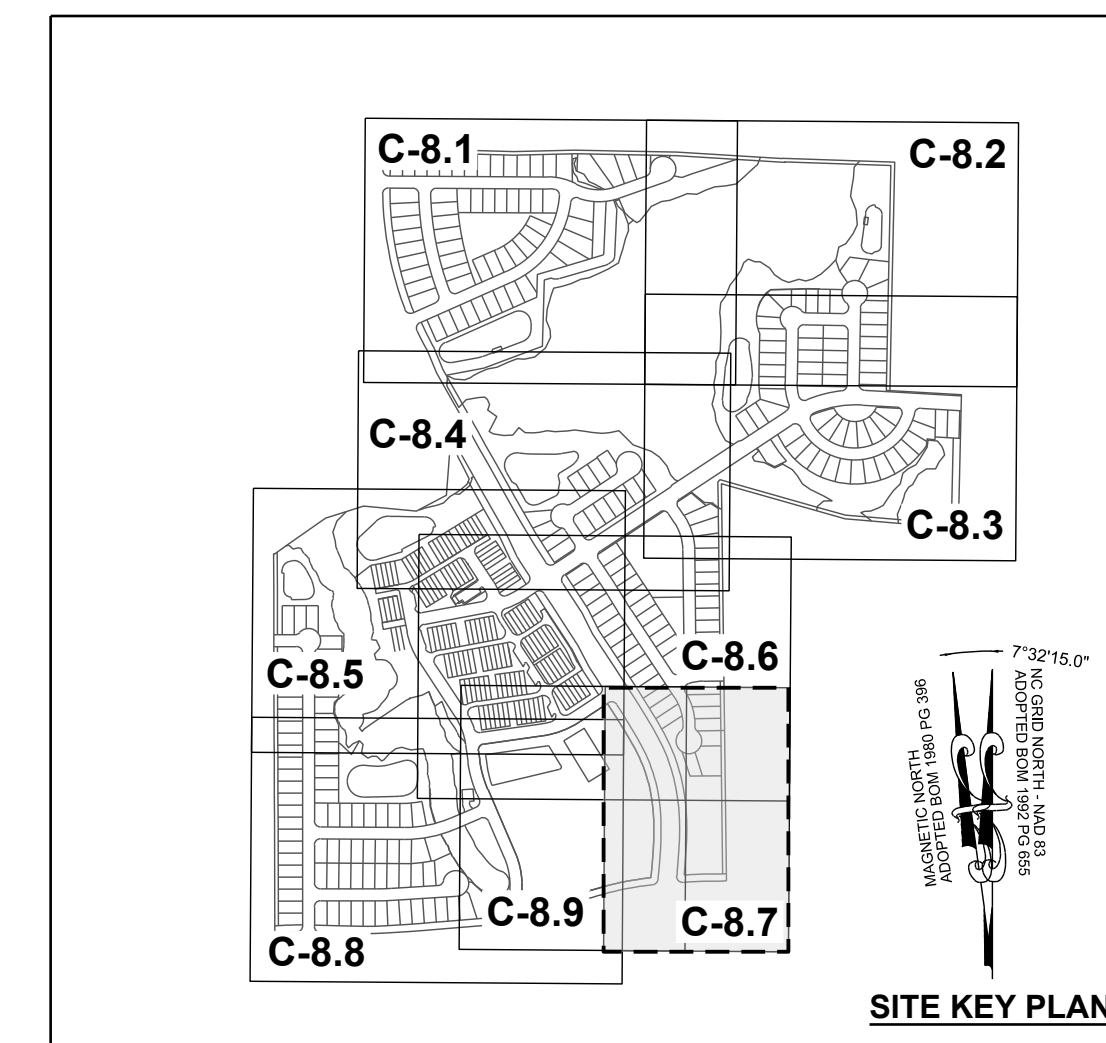
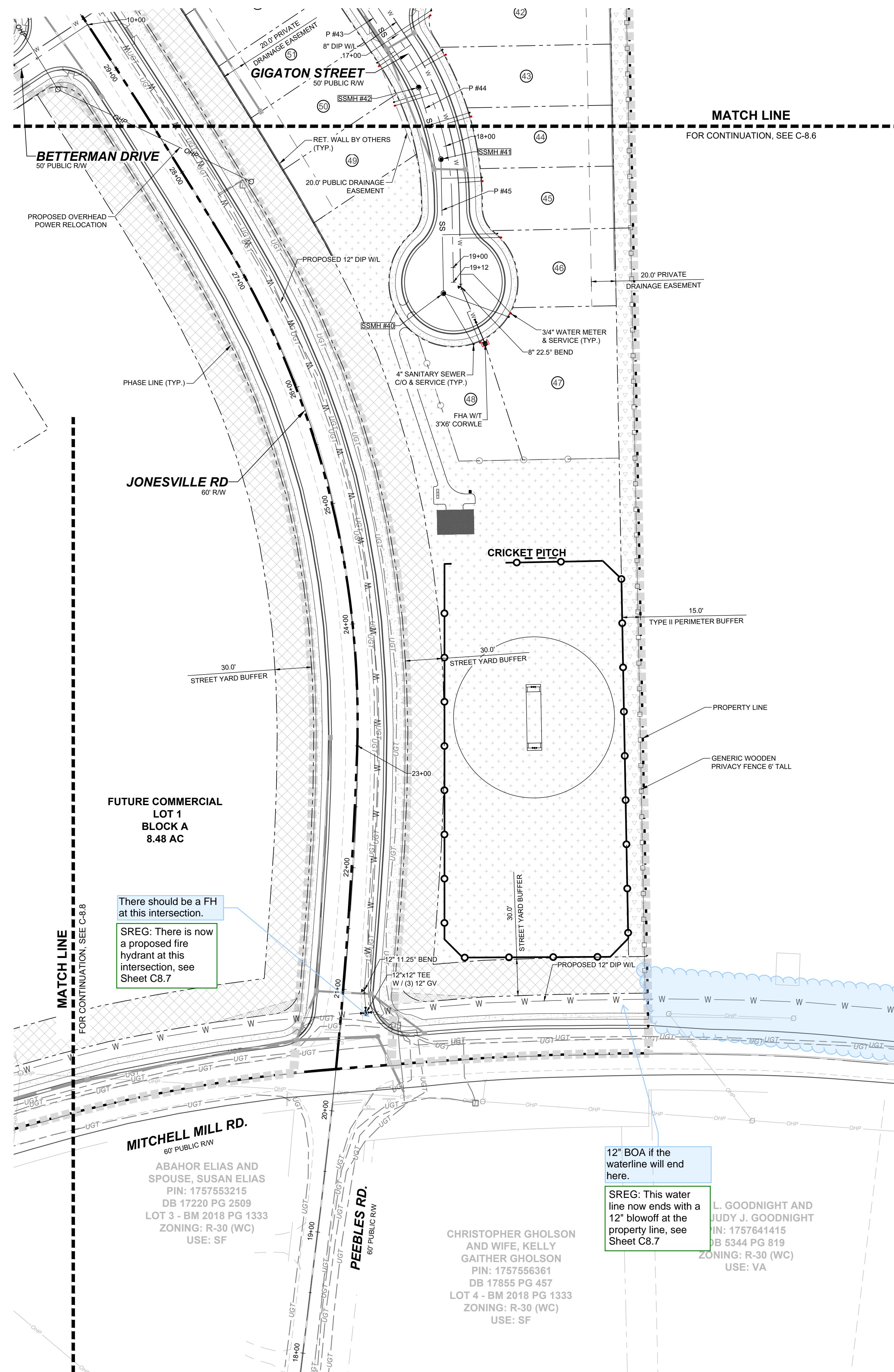
STRONG ROCK ENGINEERING GROUP, PLLC | COMPANY LICENSE # P-2166
 305 CHURCH AT NORTH HILLS STREET, SUITE 1110 RALEIGH, NC 27609 | INFORMATION@STRONGROCKGROUP.COM

STRONG ROCK PROJECT	STRONG ROCK PROJECT PSP-22-03
NOT FOR CONSTRUCTION	SCALE AS SHOWN
DESIGNED BY	JWL
DRAWN BY	SRG
CHECKED BY	JWL

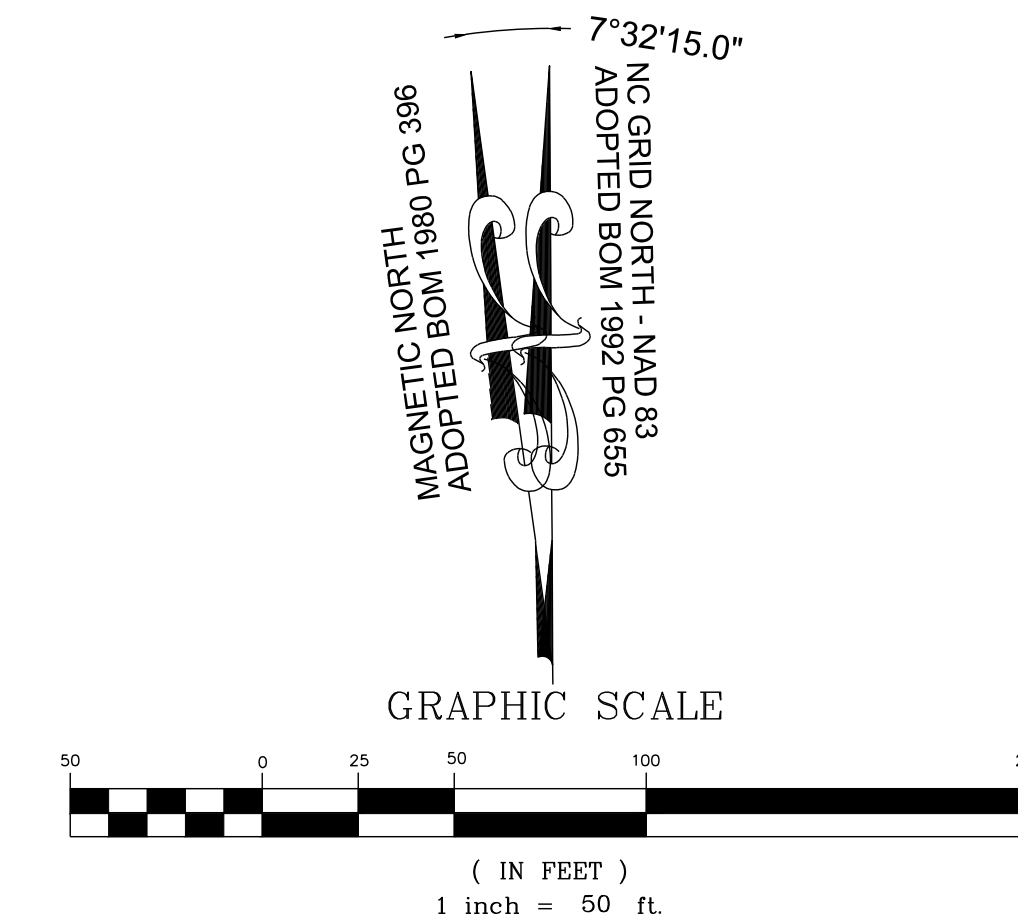
RESERVE @ MITCHELL MILL
 TOWN OF RALEIGH, WAKE COUNTY, NORTH CAROLINA
 CONSTRUCTION PLANS
 PARTIAL UTILITY PLAN VI

DRAWING SHEET
C-8.6

THIS PLANSET AND ANY ASSOCIATED DOCUMENTS ARE PRELIMINARY AND NOT AUTHORIZED FOR CONSTRUCTION UNTIL SIGNED, DATED, AND OFFICIALLY RELEASED FOR CONSTRUCTION BY THE ENGINEER OF RECORD.



LEGEND:
SEE SHEET C-8.0 FOR LEGEND.



See my comment regarding this on the preliminary.
SREG: The offsite water line has been adjusted on the approved PSP set, and this CD set shows the adjustment as well, see Sheet C8.0

12' BOA if the waterline will end here.
SREG: This water line now ends with a 12' blowoff at the property line, see Sheet C8.7

STRONG ROCK PROJECT		STRONG ROCK ENGINEERING GROUP, PLLC COMPANY LICENSE # P-2166	
PSP-24-03		305 CHURCH AT NORTH HILLS STREET, SUITE 1110 RALEIGH, NC 27609 INFORMATION@STRONGROCKGROUP.COM	
NOT FOR CONSTRUCTION		SCALE AS SHOWN	
DESIGNED BY JWL		DRAWN BY SRG	
CHECKED BY JWL			

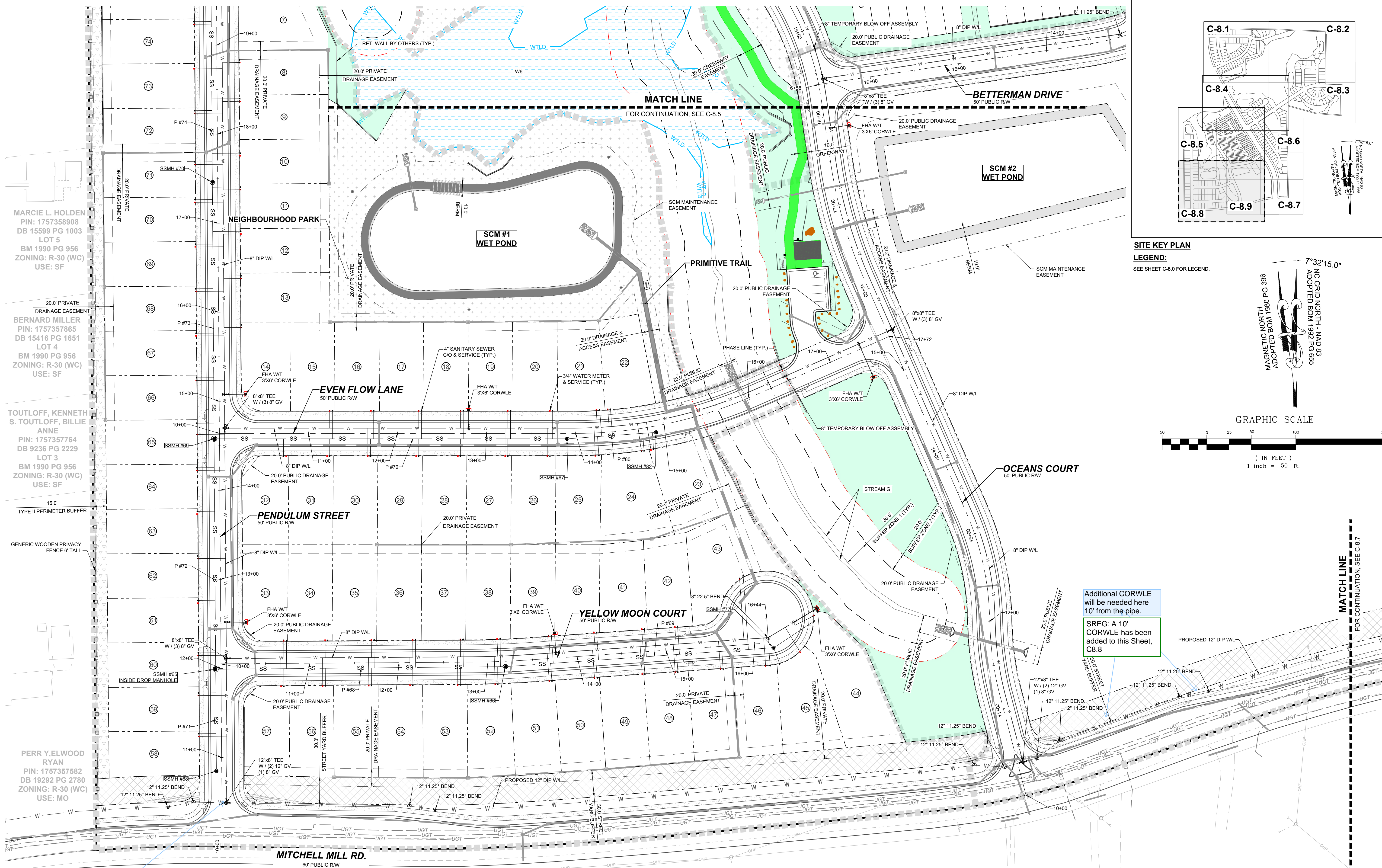
NO. 1	DATE	BY
2		

STRONG ROCK ENGINEERING GROUP

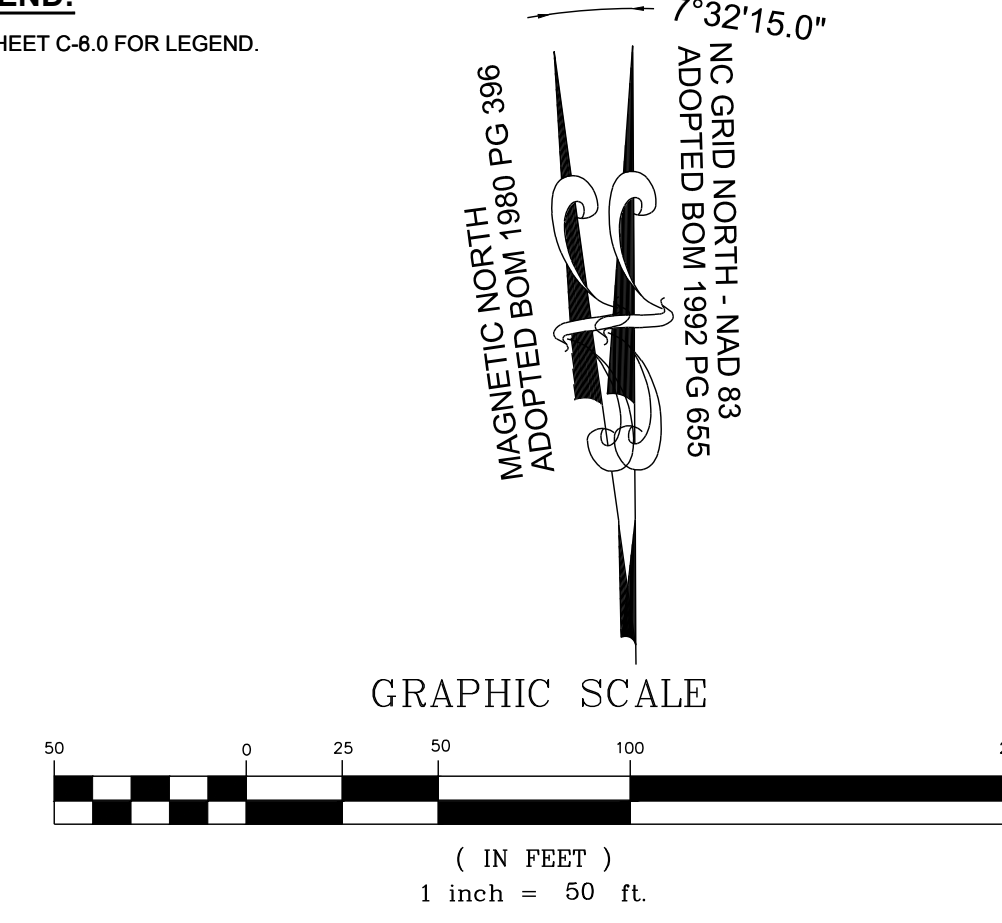
RESERVE @ MITCHELL MILL
TOWN OF ROLESVILLE, WAKE COUNTY, NORTH CAROLINA
CONSTRUCTION PLANS
PARTIAL UTILITY PLAN VII

DRAWING SHEET
C-8.7

42 OF 176



SITE KEY PLAN
LEGEND:
 SEE SHEET C-8.0 FOR LEGEND.



Additional CORWLE will be needed here 10' from the pipe.
 SREG: A 10' CORWLE has been added to this Sheet, C8.8

There should be a FH at this intersection.
 SREG: There is now a proposed fire hydrant at this intersection, see Sheet C8.8

MARCI L. HOLDEN
 PIN: 1757358908
 DB 15599 PG 1003
 LOT 5
 BM 1990 PG 956
 ZONING: R-30 (WC)
 USE: SF

BERNARD MILLER
 PIN: 1757357865
 DB 15416 PG 1651
 LOT 4
 BM 1990 PG 956
 ZONING: R-30 (WC)
 USE: SF

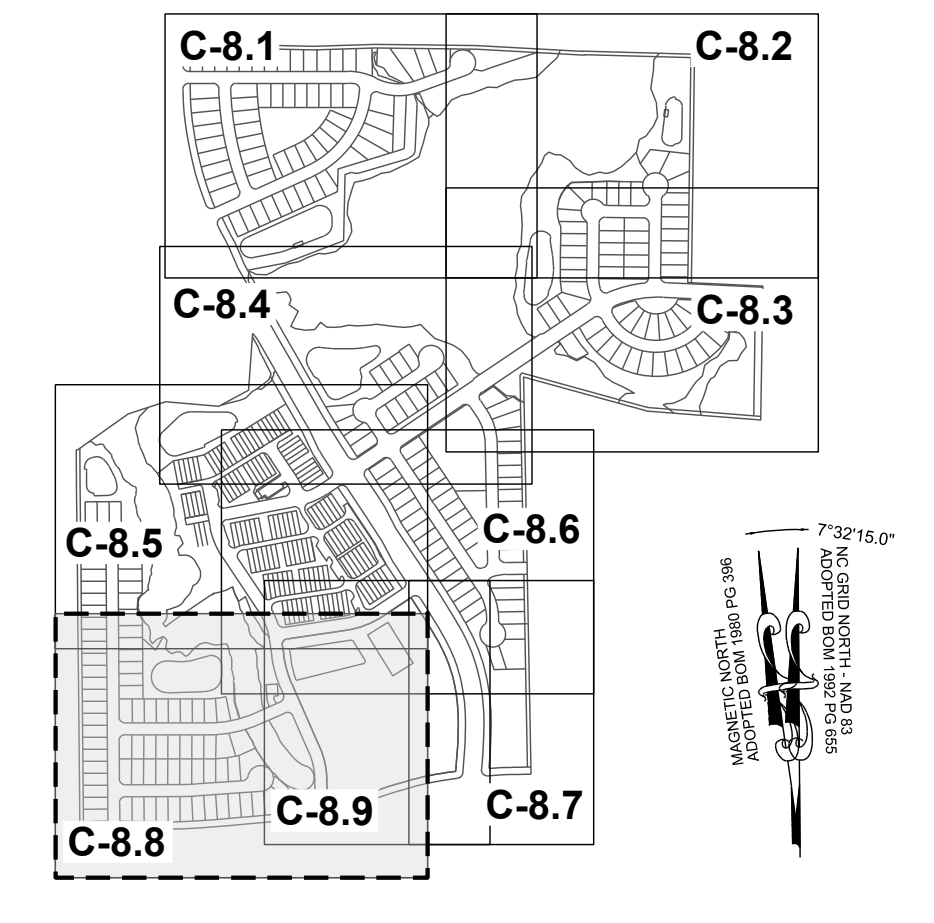
TOUTLOFF, KENNETH S. TOUTLOFF, BILLIE ANNE
 PIN: 1757357764
 DB 9236 PG 2229
 LOT 3
 BM 1990 PG 956
 ZONING: R-30 (WC)
 USE: SF

PERR Y. ELWOOD RYAN
 PIN: 1757357582
 DB 19292 PG 2780
 ZONING: R-30 (WC)
 USE: MO

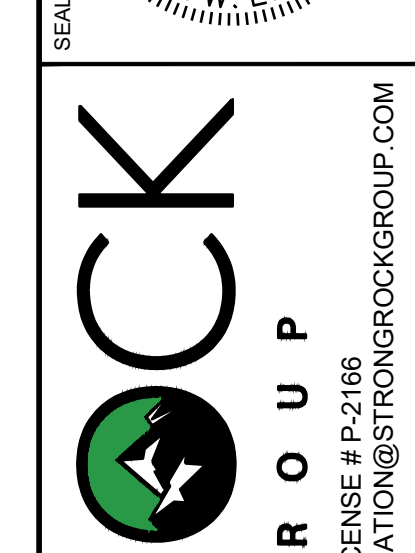
PHETIS JONES BRADSHER
 PIN: 1757349473
 DB 15208 PG 2320
 BM 2013 PG 868
 ZONING: R-30 (WC)
 USE: FO

CURTIS L. HONEYCUTT AND WIFE TODD KENDALL
 PIN: 1757540996
 DB 19269 PG 2474
 LOT 1 - BM 2018 PG 1333
 ZONING: R-30 (WC)
 USE: SF

TODD KENDALL HONEYCUTT
 PIN: 1757551202
 DB 13474 PG 1974
 LOT 2 - BM 2018 PG 1333
 ZONING: R-30 (WC)
 USE: SF



NO.	REVISIONS	DATE	BY
1	CONSTRUCTION INFRASTRUCTURE DRAWINGS CDD-24-04		
2	TOWN OF ROLESVILLE CDD-24-04	11/01/2024	



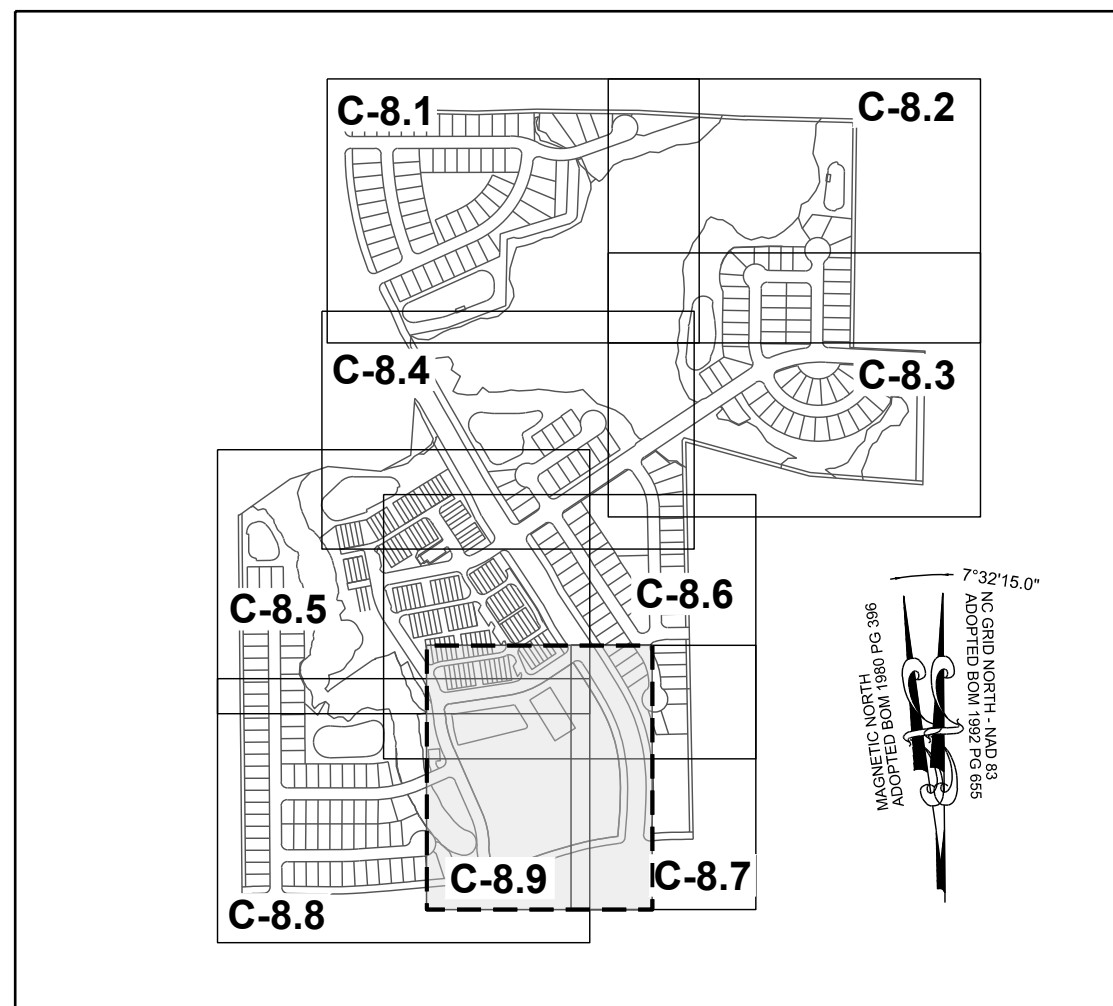
STRONGROCK
 ENGINEERING GROUP
 STRONG ROCK ENGINEERING GROUP, PLLC | COMPANY LICENSE # P-2766
 305 CHURCH AT NORTH HILLS STREET, SUITE 1110 RALEIGH, NC 27609 | INFORMATION@STRONGROCKGROUP.COM

STRONG ROCK PROJECT PSP-24-03	NOT FOR CONSTRUCTION	SCALE AS SHOWN	DESIGNED BY JWL	SRG	CHECKED BY
-------------------------------	----------------------	----------------	-----------------	-----	------------

RESERVE @ MITCHELL MILL
 TOWN OF ROLESVILLE, WAKE COUNTY, NORTH CAROLINA
 CONSTRUCTION PLANS
 PARTIAL UTILITY PLAN VIII

DRAWING SHEET
C-8.8

THIS PLANSET AND ANY ASSOCIATED DOCUMENTS ARE PRELIMINARY AND NOT AUTHORIZED FOR CONSTRUCTION UNTIL SIGNED, DATED, AND OFFICIALLY RELEASED FOR CONSTRUCTION BY THE ENGINEER OF RECORD.



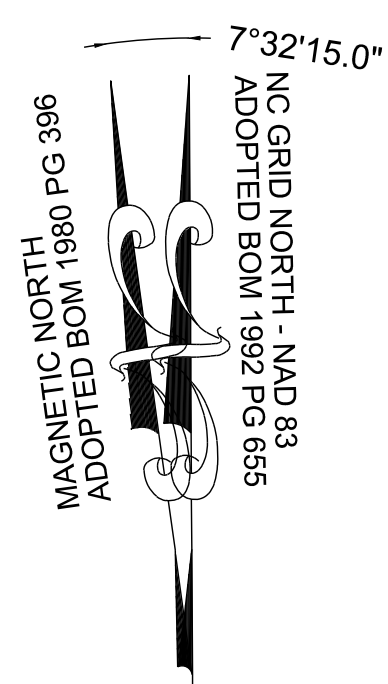
SITE KEY PLAN

LEGEND:

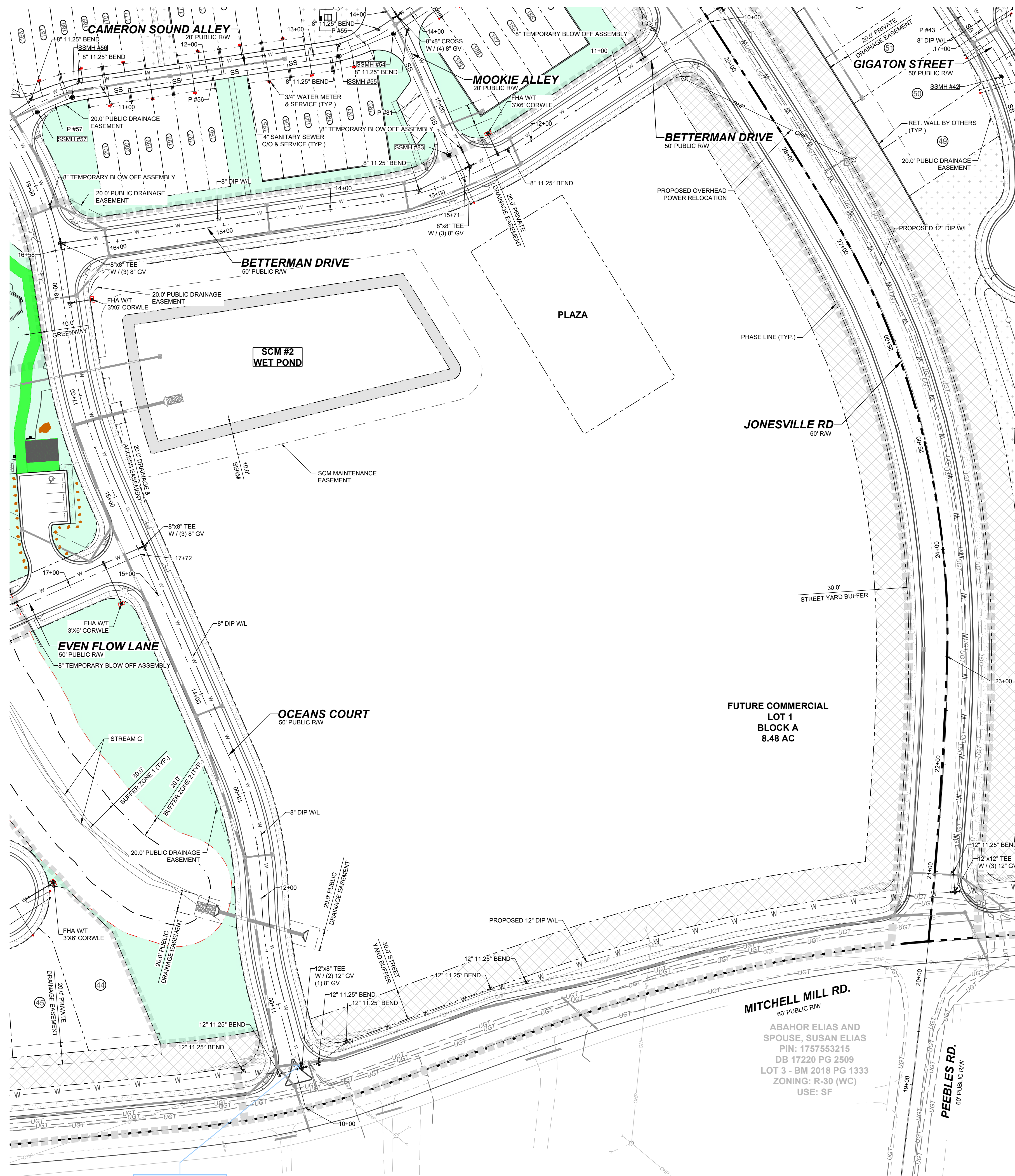
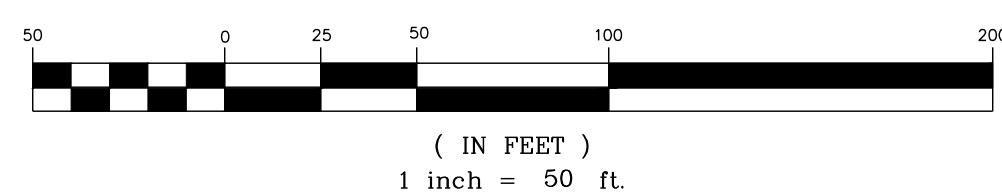
SEE SHEET C-8.0 FOR LEGEND.

TOWNHOME NOTES:

STATES INTERNAL TOWNHOME DRIVEWAYS ARE PRIVATE EASEMENTS AS PER CITY OF RALEIGH PUBLIC UTILITIES DEPARTMENT



GRAPHIC SCALE

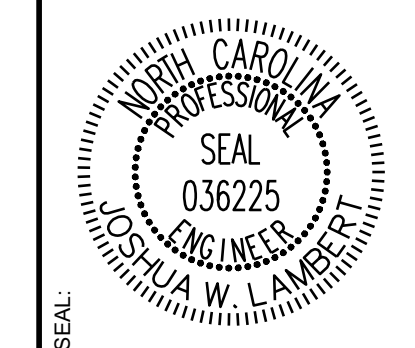


There should be a FH at this intersection.

SREG: There is now a proposed fire hydrant at this intersection, see Sheet C8.9

THIS PLANSET AND ANY ASSOCIATED DOCUMENTS ARE PRELIMINARY AND NOT AUTHORIZED FOR CONSTRUCTION UNTIL SIGNED, DATED, AND OFFICIALLY RELEASED FOR CONSTRUCTION BY THE ENGINEER OF RECORD.

NO.	REVISIONS	DATE	BY
1			
2			



STRONGROCK
ENGINEERING GROUP

STRONG ROCK ENGINEERING GROUP, PLLC | COMPANY LICENSE # P-2766
305 CHURCH AT NORTH HILLS STREET, SUITE 1110 RALEIGH, NC 27609 | INFORMATION@STRONGROCKGROUP.COM

STRONG ROCK PROJECT	STRONG ROCK PROJECT
PSP-24-03	PSP-24-03
NOT FOR CONSTRUCTION	NOT FOR CONSTRUCTION
SCALE AS SHOWN	SCALE AS SHOWN
DESIGNED BY JWL	DESIGNED BY JWL
DRAWN BY SRG	DRAWN BY SRG
CHECKED BY JWL	CHECKED BY JWL

RESERVE @ MITCHELL MILL
TOWN OF ROLESVILLE, WAKE COUNTY, NORTH CAROLINA
CONSTRUCTION PLANS
PARTIAL UTILITY PLAN IX

DRAWING SHEET
C-8.9

PIPE TABLE						
PIPE NO	TYPE	SIZE	LF	INV. IN	INV. OUT	GRADE
P #01	PVC - SDR 26	8"	296	250.76	249.28	0.50%
P #02	PVC - SDR 26	8"	205	249.08	247.04	1.00%
P #03	PVC - SDR 26	8"	235	246.84	241.98	2.06%
P #04	PVC - SDR 26	8"	78	241.78	241.39	0.50%
P #05	PVC - SDR 26	8"	86	241.19	240.76	0.50%
P #06	PVC - SDR 26	8"	83	240.56	240.15	0.50%
P #07	PVC - SDR 26	8"	119	239.95	239.35	0.50%
P #08	PVC - SDR 26	8"	92	239.15	238.69	0.50%
P #09	PVC - SDR 26	8"	291	238.49	237.04	0.50%
P #10	PVC - SDR 26	8"	140	251.59	245.70	4.20%
P #11	PVC - SDR 26	8"	134	245.50	242.15	2.51%
P #12	PVC - SDR 26	8"	137	241.95	239.69	1.65%
P #13	PVC - SDR 26	8"	50	239.49	238.32	2.35%
P #14	PVC - SDR 26	8"	147	236.84	231.80	3.44%
P #15	PVC - SDR 26	8"	189	231.60	230.66	0.50%
P #16	PVC - SDR 26	8"	149	252.05	251.31	0.50%
P #17	PVC - SDR 26	8"	238	257.50	253.26	1.78%
P #18	PVC - SDR 26	8"	257	251.11	249.82	0.50%
P #19	PVC - SDR 26	8"	290	249.62	248.17	0.50%
P #20	PVC - SDR 26	8"	58	247.97	247.68	0.50%
P #21	PVC - SDR 26	8"	50	247.48	247.23	0.50%
P #22	PVC - SDR 26	8"	162	277.78	272.52	3.26%
P #23	PVC - SDR 26	8"	86	272.32	267.42	5.68%
P #24	PVC - SDR 26	8"	91	267.22	261.08	6.74%
P #25	PVC - SDR 26	8"	61	260.88	258.23	4.32%

PIPE TABLE						
PIPE NO	TYPE	SIZE	LF	INV. IN	INV. OUT	GRADE
P #26	PVC - SDR 26	8"	87	258.03	256.45	1.82%
P #27	PVC - SDR 26	8"	87	256.25	253.00	3.73%
P #28	PVC - SDR 26	8"	100	252.80	250.80	1.99%
P #29	PVC - SDR 26	8"	87	250.60	249.16	1.66%
P #30	PVC - SDR 26	8"	64	248.96	246.64	3.62%
P #31	PVC - SDR 26	8"	141	246.44	237.20	6.55%
P #32	PVC - SDR 26	8"	411	237.00	233.15	0.94%
P #33	PVC - SDR 26	8"	111	232.95	232.39	0.50%
P #34	PVC - SDR 26	8"	302	279.47	265.29	4.69%
P #35	PVC - SDR 26	8"	272	262.79	247.30	5.70%
P #36	PVC - SDR 26	8"	68	247.10	246.76	0.50%
P #37	PVC - SDR 26	8"	113	246.56	245.00	1.38%
P #38	PVC - SDR 26	8"	46	232.19	231.96	0.50%
P #39	PVC - SDR 26	8"	136	231.76	231.08	0.50%
P #40	DIP	8"	176	230.88	230.00	0.50%
P #40A	DIP	8"	242	229.80	228.59	0.50%
P #41	PVC - SDR 26	8"	195	267.30	256.90	5.33%
P #41A	PVC - SDR 26	8"	181	256.70	248.86	4.32%
P #42	PVC - SDR 26	8"	268	282.70	267.50	5.68%
P #43	PVC - SDR 26	8"	272	294.38	282.90	4.22%
P #44	PVC - SDR 26	8"	62	298.77	294.58	6.79%
P #45	PVC - SDR 26	8"	110	304.02	298.97	4.60%
P #46	DIP	8"	59	228.39	228.10	0.50%
P #46A	DIP	8"	296	227.90	226.42	0.50%
P #47	DIP	8"	66	226.22	225.89	0.50%

PIPE TABLE						
PIPE NO	TYPE	SIZE	LF	INV. IN	INV. OUT	GRADE
P #48	DIP	8"	116	225.69	225.11	0.50%
P #49	PVC - SDR 26	8"	106	268.24	260.79	7.00%
P #50	PVC - SDR 26	8"	44	258.29	256.66	3.75%
P #51	PVC - SDR 26	8"	317	256.46	245.37	3.50%
P #52	PVC - SDR 26	8"	35	245.17	245.00	0.50%
P #53	PVC - SDR 26	8"	30	244.80	244.64	0.50%
P #54	PVC - SDR 26	8"	150	281.01	274.73	4.19%
P #55	PVC - SDR 26	8"	55	274.53	273.38	2.10%
P #56	PVC - SDR 26	8"	251	273.18	263.91	3.69%
P #57	PVC - SDR 26	8"	35	263.71	260.70	8.49%
P #58	PVC - SDR 26	8"	40	260.50	259.36	2.86%
P #59	PVC - SDR 26	8"	261	259.16	246.50	4.84%
P #60	PVC - SDR 26	8"	84	244.44	242.20	2.68%
P #61	PVC - SDR 26	8"	92	242.00	240.90	1.19%
P #62	PVC - SDR 26	8"	223	250.21	243.44	3.03%
P #63	PVC - SDR 26	8"	104	245.48	243.44	1.98%
P #64	PVC - SDR 26	8"	272	243.24	237.63	2.06%
P #65	PVC - SDR 26	8"	27	237.43	236.33	4.15%
P #66	PVC - SDR 26	8"	110	236.13	235.58	0.50%
P #67	PVC - SDR 26	8"	80	235.38	234.98	0.50%
P #68	DIP	8"	325	263.14	261.51	0.50%
P #69	PVC - SDR 26	8"	302	264.85	263.34	0.50%
P #70	DIP	8"	396	264.77	262.21	0.65%
P #71	PVC - SDR 26	8"	114	284.29	277.76	5.71%
P #72	DIP	8"	259	261.31	260.02	0.50%

PIPE TABLE						
PIPE NO	TYPE	SIZE	LF	INV. IN	INV. OUT	GRADE
P #73	DIP	8"	288	259.82	258.38	0.50%
P #74	PVC - SDR 26	8"	223	258.18	257.07	0.50%
P #75	PVC - SDR 26	8"	290	256.87	255.42	0.50%
P #76	PVC - SDR 35	8"	172	234.78	231.63	1.83%
P #77	PVC - SDR 35	8"	157	231.43	230.65	0.50%
P #78	PVC - SDR 35	8"	47	230.45	230.21	0.50%
P #79	PVC - SDR 26	8"	124	255.22	254.60	0.50%
P #80	PVC - SDR 26	8"	100	265.48	264.97	0.50%
P #81	PVC - SDR 26	8"	124	276.77	274.93	1.49%
P #82	DIP	8"	334	254.40	229.01	7.59%
P #83	PVC - SDR 35	8"	36	227.51	225.98	4.23%
P #84	PVC - SDR 26	8"	148	240.70	236.33	2.96%
P #85	PVC - SDR 26	8"	107	243.08	242.30	0.73%
P #86	PVC - SDR 26	8"	67	230.46	230.12	0.50%
P #87	PVC - SDR 26	8"	79	240.66	236.99	4.64%
P #88	PVC - SDR 26	8"	240	236.79	234.18	1.09%
P #89	PVC - SDR 26	8"	39	233.98	233.79	0.50%
P #90	PVC - SDR 26	8"	42	280.08	277.98	5.00%
P #91	PVC - SDR 26	8"	139	280.37	279.67	0.50%
P #92	PVC - SDR 26	8"	105	253.63	253.10	0.50%
P #93	PVC - SDR 26	8"	130	252.90	252.25	0.50%

SSMH TABLE					
SSMH NO	SIZE	TOP	INV. IN	INV. OUT	DEPTH
DOG HOUSE SSMH #92	5'	243.62	231.47 E 233.79 N	231.27 W	12.34
SSMH #01	4'	259.64		250.76 E	8.88
SSMH #02	4'	257.52	249.28 W	249.08 E	8.44
SSMH #03	4'	255.62	247.04 W	246.84 E	8.78
SSMH #04	4'	250.81	241.98 W	241.78 S	9.03
SSMH #05	4'	251.21	241.39 N	241.19 S	10.02
SSMH #06	4'	250.79	240.76 N	240.56 SW	10.23
SSMH #07	4'	250.33	240.15 NE	239.95 SW	10.38
SSMH #08	4'	249.73	239.35 NE	239.15 SW	10.58
SSMH #09	4'	249.17	238.69 NE	238.49 SW	10.68
SSMH #10	4'	257.33		251.59 S	5.77
SSMH #11	4'	254.40	245.70 N	245.50 S	8.92
SSMH #12	4'	251.62	242.15 N	241.95 S	9.66
SSMH #13	4'	248.69	239.69 N	239.49 SE	9.21
SSMH #14	4'	247.66	237.04 NE 238.32 NW	236.84 SW	10.82
SSMH #15	4'	242.27	231.80 NE	231.60 SE	10.67
SSMH #16	4'	260.65	252.25 NE	252.05 S	8.62
SSMH #17	4'	265.86		257.50 N	8.39
SSMH #18	4'	262.32	251.31 N 253.26 S	251.11 W	11.23
SSMH #19	5'	264.15	249.82 E	249.62 S	14.53
SSMH #20	4'	257.86	248.17 N	247.97 S	9.89
SSMH #21	4'	256.43	247.68 N	247.48 SE	8.95
SSMH #22	4'	286.97	277.98 N	277.78 W	9.19
SSMH #23	4'	279.55	272.52 E	272.32 S	7.23
SSMH #24	4'	274.48	267.42 N	267.22 SW	7.26

SSMH TABLE					
SSMH NO	SIZE	TOP	INV. IN	INV. OUT	DEPTH
SSMH #25	4'	265.51	258.23 NE	258.03 W	7.48
SSMH #26	4'	262.13	256.45 E	256.25 W	5.89
SSMH #27	4'	260.47	253.00 E	252.80 NW	7.67
SSMH #28	4'	258.56	250.80 SE	250.60 NW	7.95
SSMH #29	4'	256.92	249.16 SE	248.96 NW	7.96
SSMH #30	4'	256.07	246.64 SE 247.23 NW	246.44 SW	9.66
SSMH #31	5'	251.80	237.20 NE 237.20 SE	237.00 SW	15.31
SSMH #32	5'	252.01	233.15 NE	232.95 SW	19.08
SSMH #33	5'	296.53	279.67 E	279.47 N	17.08
SSMH #34	4'	273.76	265.29 S	262.79 N	10.97
SSMH #35	4'	256.83	247.30 S	247.10 N	9.76
SSMH #36	4'	254.96	246.76 S	246.56 NW	8.40
SSMH #37 INSIDE DROP MANHOLE	6'	252.66	232.39 NE 245.00 SE	232.19 N	20.47
SSMH #37A	6'	252.49	231.96 S	231.76 NW	20.76
SSMH #38	5'	247.80	231.08 SE	230.88 SW	16.92
SSMH #39	6'	251.21	230.00 NE	229.80 SW	21.41
SSMH #40	4'	311.84		304.02 N	7.82
SSMH #41	4'	306.80	298.97 S	298.77 N	8.04
SSMH #42	4'	303.66	294.58 S	294.38 NW	9.30
SSMH #43	4'	292.93	282.90 SE	282.70 NW	10.23
SSMH #44	4'	276.65	267.50 SE	267.30 NW	9.38
SSMH #45	5'	269.46	256.90 SE	256.70 NW	12.78
SSMH #45A INSIDE DROP MANHOLE	6'	257.61	248.86 SE 228.59 NE	228.39 NW	29.22
SSMH #46	6'	255.99	228.10 SE	227.90 W	28.09
SSMH #46A	6'	252.21	226.42 E	226.22 NW	25.99

SSMH TABLE					
SSMH NO	SIZE	TOP	INV. IN	INV. OUT	DEPTH
SSMH #47	6'	249.33	225.89 SE	225.69 W	23.64
SSMH #48	4'	276.94		268.24 SW	8.70
SSMH #49	4'	269.59	260.79 NE	258.29 W	11.30
SSMH #50	4'	266.71	256.66 E	256.46 W	10.25
SSMH #51	4'	257.07	245.37 E	245.17 SW	11.90
SSMH #52	5'	256.95	245.00 NE	244.80 SW	12.15
SSMH #53	4'	286.96		281.01 SW	5.95
SSMH #54	4'	282.54	274.73 NE 274.93 SE	274.53 W	8.04
SSMH #55	4'	280.40	273.38 E	273.18 W	7.22
SSMH #56	4'	272.28	263.91 E	263.71 SW	8.56
SSMH #57	4'	271.19	260.70 NE	260.50 SW	10.69
SSMH #58	4'	270.44	259.36 NE	259.16 NW	11.28
SSMH #59	5'	256.67	244.64 NE 246.50 SE	244.44 NW	12.22
SSMH #60	4'	261.29		250.21 NW	11.08
SSMH #61	4'	254.27		245.48 SW	8.79
SSMH #62	4'	252.21	243.44 SE 243.44 NE	243.24 SW	8.98
SSMH #63	5'	248.22	235.58 E	235.38 NW	12.84
SSMH #64	4'	247.68	236.33 E 236.33 S	236.13 W	11.55
SSMH #65 INSIDE DROP MANHOLE	6'	284.31	261.51 E 277.76 S	261.31 N	23.02
SSMH #66	5'	278.65	263.34 E	263.14 W	15.51
SSMH #67	4'	275.45	264.97 E	264.77 W	10.68
SSMH #68	4'	289.85		284.29 N	5.58
SSMH #69					

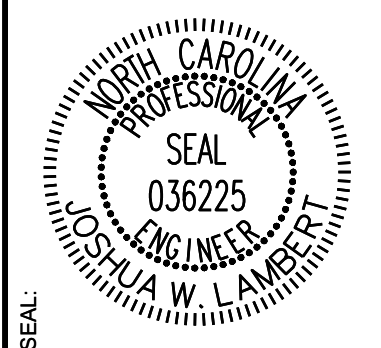


TOWNHOME NOTES:
 STATES INTERNAL TOWNHOME DRIVEWAYS ARE PRIVATE EASEMENTS AS PER CITY OF RALEIGH PUBLIC UTILITIES DEPARTMENT

LEGEND:

	WATER LINE
	FIRE HYDRANT ASSEMBLY
	GATE VALVE
	TEE
	BLOW OFF VALVE

No.	REVISIONS	DATE	BY
1			
2			



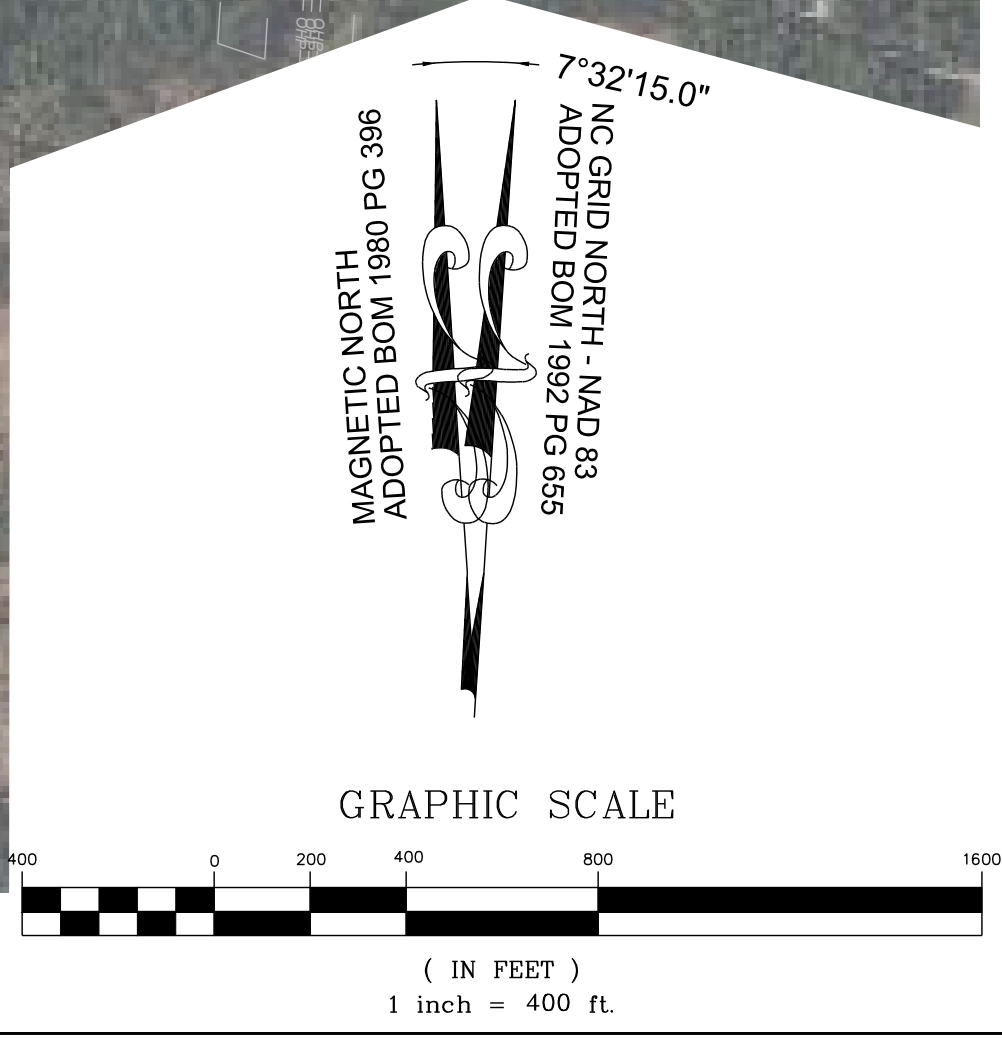
STRONGROCK
 ENGINEERING GROUP
 STRONG ROCK ENGINEERING GROUP, PLLC | COMPANY LICENSE # P-2166
 305 CHURCH AT NORTH HILLS STREET, SUITE 1110 RALEIGH, NC 27609 | INFORMATION@STRONGROCKGROUP.COM

STRONG ROCK PROJECT	STRONG ROCK PROJECT
PSP-24-08	PSP-24-08
NOT FOR CONSTRUCTION	NOT FOR CONSTRUCTION
SCALE AS SHOWN	SCALE AS SHOWN
DESIGNED BY JWL	DESIGNED BY JWL
DRAWN BY SRG	DRAWN BY SRG
CHECKED BY JWL	CHECKED BY JWL

RESERVE @ MITCHELL MILL
 TOWN OF ROLESVILLE, WAKE COUNTY, NORTH CAROLINA
 CONSTRUCTION PLANS
 OFF-SITE UTILITY PLAN

DRAWING SHEET
C-8.11

Plan/profile sheets and easements should be shown for this full waterline extension.
 SREG: The offsite water main extension now has plan & profile sheets, see Sheets C11.33 - C11.40



THIS PLANSET AND ANY ASSOCIATED DOCUMENTS ARE PRELIMINARY AND NOT AUTHORIZED FOR CONSTRUCTION UNTIL SIGNED, DATED, AND OFFICIALLY RELEASED FOR CONSTRUCTION BY THE ENGINEER OF RECORD.