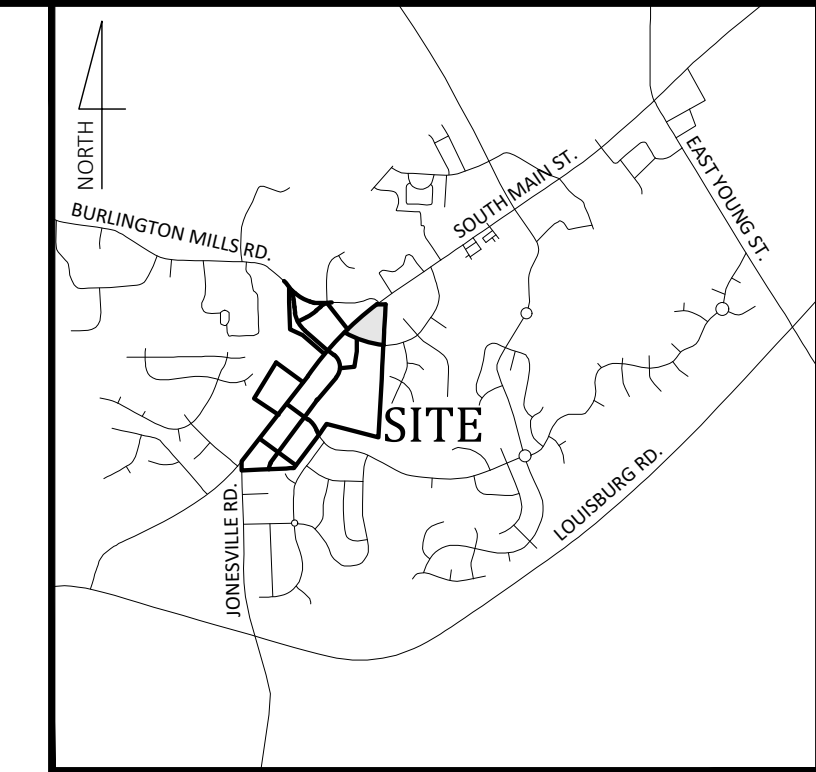


# MASS GRADING / EROSION CONTROL WALLBROOK - Lot 8

S. Main St. / US-401 Business & Wall Creek Drive, Town of Rolesville, Wake County, North Carolina

Project No. CID 24-03

V2-  
CID-24-03  
Plan set



Vicinity Map  
NOT TO SCALE

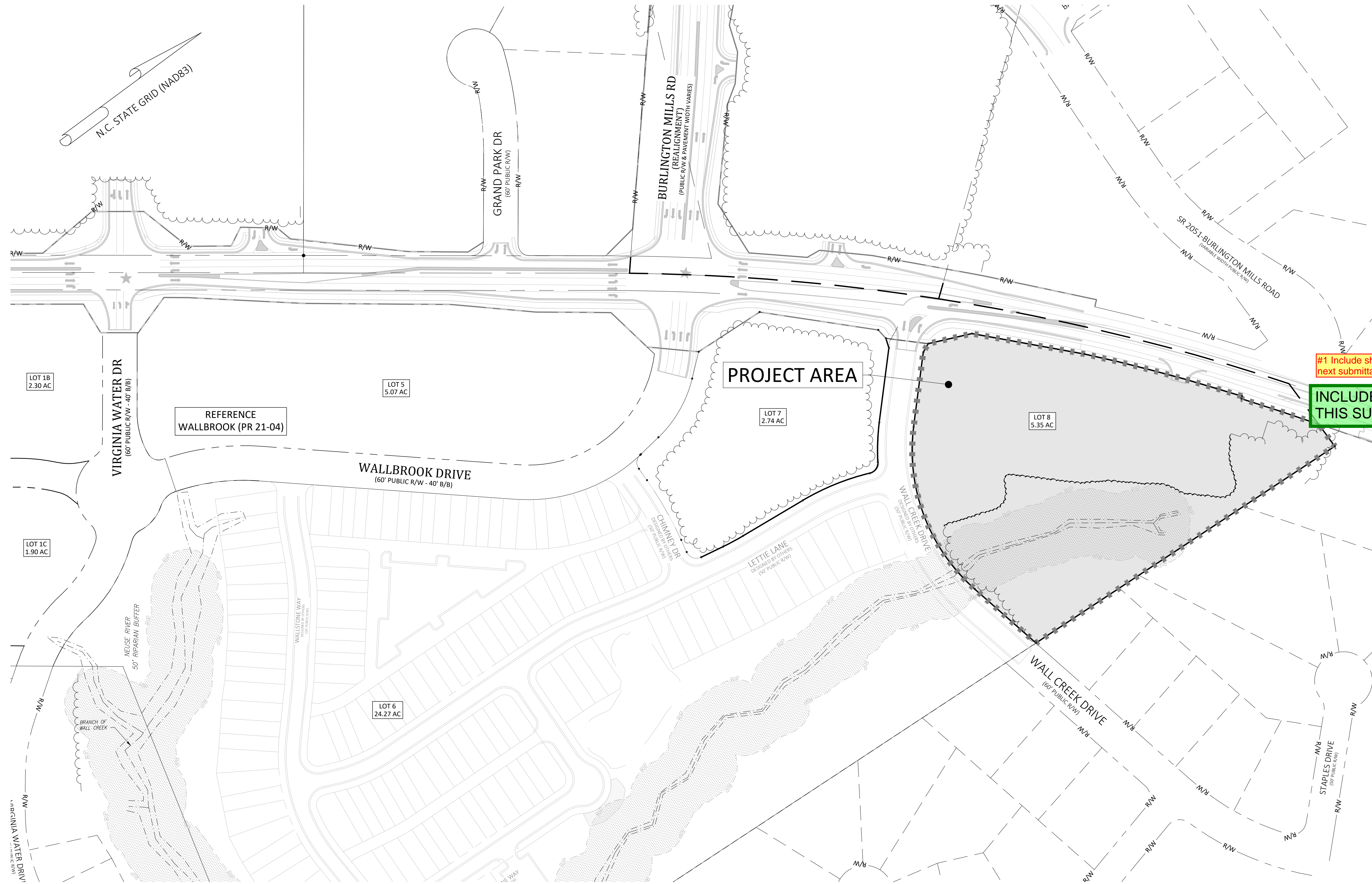
- Final Drawing -  
Issued for Permit  
Review Purposes Only

#	DATE	REVISIONS:	DESCRIPTION
2	3-JUN-24	REVISED PER REVIEW COMMENTS	
1	1-APR-24	ISSUED FOR INITIAL REVIEW	



**COVER**  
**WALLBROOK - LOT 8**  
**MASS GRADING / EROSION CONTROL**  
Town of Rolesville Project No. CID 24-03  
Rolesville, Wake County, North Carolina  
S Main St. / US-401 Business & Wall Creek Drive

NC License: P-1199  
**ARK CONSULTING GROUP PLLC**  
ENGINEERS & PLANNERS  
2755-B Charles Blvd  
Greenville, NC 27638  
(757) 558-0888  
www.arkconsultinggroup.com



**Sheet Index**

#	Title
△△ C0.1	Cover
△△ C0.2	Existing Conditions & Demolition Plan
△△ C1.0	Erosion Control Notes & Legend
△△ C1.1	Erosion Control Phase 1
△△ C1.2	Erosion Control Phase 2 & Mass Grading Plan
△ C2.1	Details
△ C2.2	Details
REF	Survey - Johnson, Mirmiran & Thompson (3 Sheets)
REF	Tree Preservation Plan - PR-21-04 REVISED (1 Sheet)

#1 Include sheets in next submittal

**INCLUDED WITH THIS SUBMITTAL**

**Site Data**

PIN NUMBERS:	1758-67-1871
REAL ESTATE ID:	0509438
CURRENT ZONING:	GC-C2
ACREAGE IN PARCEL:	5.35 ACRES
ACREAGE IN PUBLIC R/W:	0.00 ACRES
TOTAL ACREAGE DISTURBED:	2.80 ACRES
WATERSHED:	Lower Neuse
RIVER BASIN:	Neuse
CURRENT USE:	VACANT / WOODED
EXISTING IMPERVIOUS:	0 SF
PROPOSED IMPERVIOUS:	0 SF
PROPOSED USE(S):	NON-RESIDENTIAL/COMMERCIAL
LOTS IN DEVELOPMENT:	LOT 8
REFERENCES:	DB 018103 PG 01563 BM2023 PG 01602

#2 LOD appears to have been updated. verify acreage disturbed and update as needed

**THE LOD LINE HAS SHIFTED SLIGHTLY, HOWEVER THE TOTAL AREA DISTURBED REMAINS 2.80 AC**

**Owner/Developer**

Wallbrook Landco, LLC  
3 Keel St, Ste 2  
Wrightsville Beach, NC

**Engineer**

Ark Consulting Group, PLLC  
2755-B Charles Blvd  
Greenville, NC  
Contact: Bryan C. Fagundus, PE

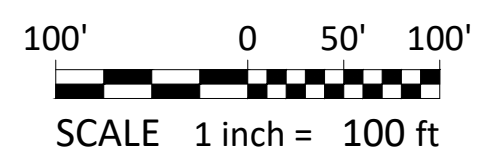
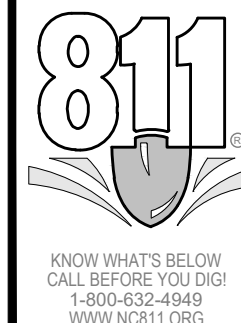
**EROSION AND SEDIMENT CONTROL**

**APPROVED PLAN**  
DATE \_\_\_\_\_  
PERMIT NO. S- \_\_\_\_\_  
Wake County Environmental Services  
Sedimentation & Erosion Control  
919-856-7400



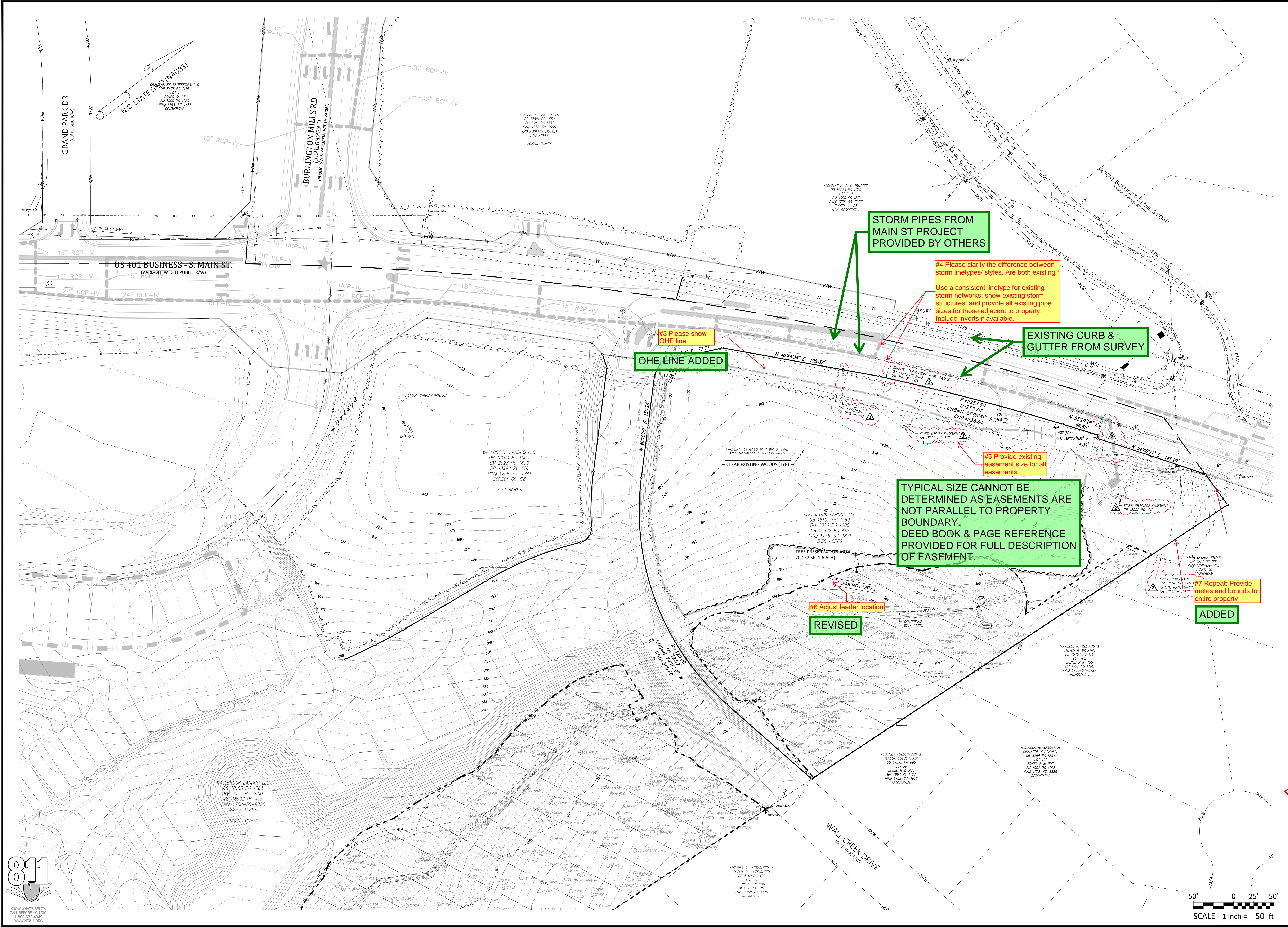
Project Manager:	BCF
Drawn By:	DLC
Checked By:	TN
Project Number:	24137
Drawing Number:	D-1472

**C0.1**  
Date: April 1, 2024



D:\VARS\0309\01 - PROJECTS\EROSION CONTROL\24-03 - WALLBROOK - LOT 8 - FINAL\01 - FINAL\01 - WALLBROOK - LOT 8 - FINAL.dwg, 01/04/2024, 10:58:58 AM, User: bcfagundus





STORM PIPES FROM MAIN ST PROJECT PROVIDED BY OTHERS

#4 Please clarify the difference between storm linetypes/ styles. Are both existing? Use a consistent linetype for existing storm networks, show existing storm structures, and provide all existing pipe sizes for those adjacent to property. Include inverts if available.

EXISTING CURB & GUTTER FROM SURVEY

#3 Please show OHE line  
OHE LINE ADDED

#5 Provide existing easement size for all easements  
TYPICAL SIZE CANNOT BE DETERMINED AS EASEMENTS ARE NOT PARALLEL TO PROPERTY BOUNDARY. DEED BOOK & PAGE REFERENCE PROVIDED FOR FULL DESCRIPTION OF EASEMENT.

#6 Adjust leader location  
REVISED

#7 Repeat: Provide metes and bounds for entire property  
ADDED

**- Final Drawing -**  
Issued for Permit  
Review Purposes Only

#	DATE	ISSUED FOR INITIAL REVIEW	DESCRIPTION
1	1-APR-24	ISSUED FOR INITIAL REVIEW	
2	3-JUN-24	REVISED PER REVIEW COMMENTS	



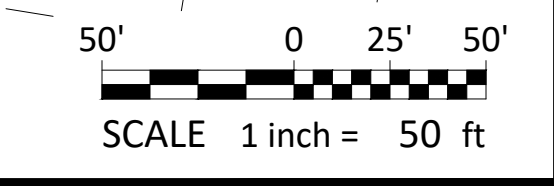
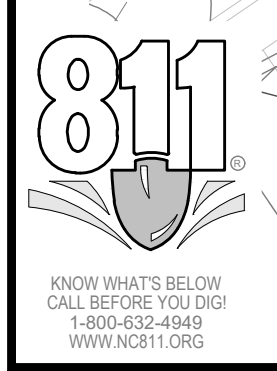
**EXISTING CONDITIONS & DEMOLITION PLAN**  
**WALLBROOK - LOT 8**  
MASS GRADING / EROSION CONTROL  
Town of Rolesville Project No. CID 24-03  
S Main St. / US-401 Business & Wall Creek Drive  
Rolesville, Wake County, North Carolina

NC License: P-1199  
**ARK CONSULTING GROUP PLLC**  
ENGINEERS & PLANNERS  
2755-B Charles Blvd  
Charlotte, NC 28205  
(754) 558-0888  
www.arkconsultinggroup.com

6/1/2024

Project Manager:	BCF
Drawn By:	DLC
Checked By:	TN
Project Number:	24137
Drawing Number:	D-1472

**C0.2**  
Date: April 1, 2024





**GROUND STABILIZATION AND MATERIALS HANDLING PRACTICES FOR COMPLIANCE WITH THE NCGO1 CONSTRUCTION GENERAL PERMIT**

Implementing the details and specifications on this plan sheet will result in the construction activity being considered compliant with the Ground Stabilization and Materials Handling sections of the NCGO1 Construction General Permit (Sections E and F, respectively). The permittee shall comply with the Erosion and Sediment Control plan approved by the delegated authority having jurisdiction. All details and specifications shown on this sheet may not apply depending on site conditions and the delegated authority having jurisdiction.

**SECTION E: GROUND STABILIZATION**

Table with 3 columns: Site Area Description, Stabilize within this many calendar days after ceasing land disturbance, and Timeframe variations. Rows include (a) Perimeter dikes, (b) High Quality Water (HQW) Zones, (c) Slopes steeper than 3:1, (d) Slopes 3:1 to 4:1, and (e) Areas with slopes flatter than 4:1.

Note: After the permanent cessation of construction activities, any areas with temporary ground stabilization shall be converted to permanent ground stabilization as soon as practicable but in no case longer than 90 calendar days after the last land disturbing activity.

**GROUND STABILIZATION SPECIFICATION**

- Temporarily stabilize the ground sufficiently so that rain will not dislodge the soil. Use one of the techniques in the table below.
- Temporary Stabilization: Temporary grass seed covered with straw or other mulches and tackifiers, Hydroseeding, Rolled erosion control products with or without temporary grass seed, etc.
- Permanent Stabilization: Permanent grass seed covered with straw or other mulches and tackifiers, Geotextile fabrics such as permanent soil reinforcement matting, etc.

**POLYACRYLAMIDES (PAMS) AND FLOCCULANTS**

- Select flocculants that are appropriate for the soils being exposed during construction, selecting from the NC DWR List of Approved PAMS/Flocculants.
- Apply flocculants at or before the inlets to Erosion and Sediment Control Measures.
- Apply flocculants at the concentrations specified in the NC DWR List of Approved PAMS/Flocculants and in accordance with the manufacturer's instructions.

**EQUIPMENT AND VEHICLE MAINTENANCE**

- Maintain vehicles and equipment to prevent discharge of fluids.
- Provide drip pans under any stored equipment.
- Identify leaks and repair as soon as feasible, or remove leaking equipment from the project.

**LITTER, BUILDING MATERIAL AND LAND CLEARING WASTE**

- Never bury or burn waste. Place litter and debris in approved waste containers.
- Provide a sufficient number and size of waste containers (e.g. dumpster, trash receptacle) on site to contain construction and domestic wastes.
- Locate waste containers at least 50 feet away from storm drain inlets and surface waters unless no other alternatives are reasonably available.

**PAINT AND OTHER LIQUID WASTE**

- Do not dump paint and other liquid waste into storm drains, streams or wetlands.
- Locate paint washouts at least 50 feet away from storm drain inlets and surface waters unless no other alternatives are reasonably available.

**PORTABLE TOILETS**

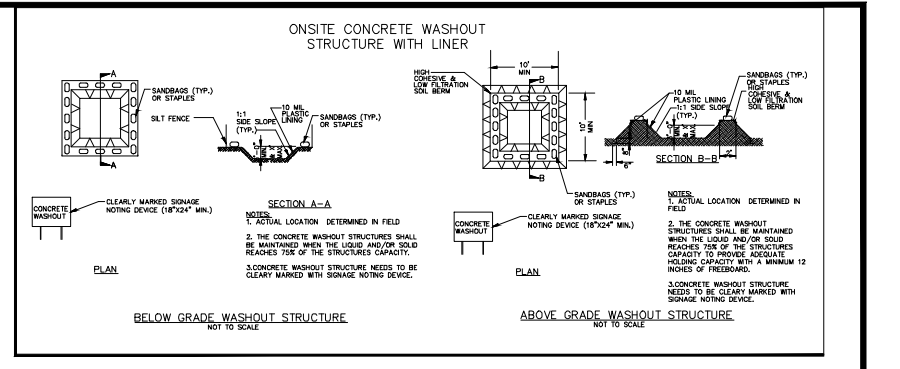
- Install portable toilets on level ground, at least 50 feet away from storm drains, streams or wetlands unless there is no alternative reasonably available.
- Provide staking or anchoring of portable toilets during periods of high winds or in high foot traffic areas.

**EARTHEN STOCKPILE MANAGEMENT**

- Show stockpile locations on plans. Locate earthen-material stockpile areas at least 50 feet away from storm drain inlets, sediment basins, perimeter sediment controls and surface waters unless it can be shown no other alternatives are reasonably available.

**HAZARDOUS AND TOXIC WASTE**

- Create designated hazardous waste collection areas on-site.
- Place hazardous waste containers under cover or in secondary containment.



**CONCRETE WASHOUTS**

- Do not discharge concrete or cement slurry from the site.
- Dispose of, or recycle settled, hardened concrete residue in accordance with local and state solid waste regulations and at an approved facility.
- Manage washout from mortar mixers in accordance with the above item and in addition place the mixer and associated materials on impervious barrier and within lot perimeter silt fence.

**HERBICIDES, PESTICIDES AND RODENTICIDES**

- Store and apply herbicides, pesticides and rodenticides in accordance with label restrictions.
- Store herbicides, pesticides and rodenticides in their original containers with the label, which lists directions for use, ingredients and first aid steps in case of accidental poisoning.

**HAZARDOUS AND TOXIC WASTE**

- Create designated hazardous waste collection areas on-site.
- Place hazardous waste containers under cover or in secondary containment.

**Legend**

Legend table with columns EXISTING and PROPOSED. Includes symbols for FOUND MONUMENT AS NOTED, SET IRON PIN, NCGS MONUMENT, DIMENSION POINT, PROPERTY LINE, RIGHT OF WAY, CURB AND GUTTER, CABLE TV PEDESTAL, DROP INLET, ELECTRIC BOX, ELECTRIC METER, FIBER OPTIC, FIRE HYDRANT, GAS VALVE, HAND BOX, LIGHT POLE, POWER POLE, GUY WIRE, REINFORCED CONCRETE PIPE, SQUARE FEET (AREA), SIGN, TRAFFIC SIGNAL POLE, SANITARY SEWER MANHOLE, SANITARY SEWER FORCE MAIN VALVE, STORM DRAIN MANHOLE, TELEPHONE PEDESTAL, TRAFFIC BOX, WATER METER, WATER MANHOLE, WATER VALVE, WELL, PEDESTRIAN X-WALK POLE, ELECTRIC LINE, SANITARY SEWER FORCE MAIN, FIBER OPTIC LINE, GAS LINE, OVERHEAD ELECTRIC LINE, SANITARY SEWER LINE, TELEPHONE LINE, CABLE TV LINE, WATER LINE, FIRE LINE, 8" WATER LINE, 12" WATER LINE, TREE LINE, MAJOR CONTOUR (5'), MINOR CONTOUR (1'), DESIGN CONTOUR (ARK CONSULTING GROUP), DESIGN CONTOUR (MADAMS, CO.), SILT FENCE, LIMITS OF DISTURBANCE, TREE PROTECTION FENCE, SKIMMER PIPE, SKIMMER OUTLET DEVICE, STONE CHECK DAM, TDD DRAINAGE AREA, SKIMMER BASIN DRAINAGE AREA, TEMP. CONSTRUCTION EASEMENT, RIPARIAN BUFFER, TREE PRESERVATION AREA, PROJECT AREA.

**NCGO1 GROUND STABILIZATION AND MATERIALS HANDLING EFFECTIVE: 04/01/19**

**PART III SELF-INSPECTION, RECORDKEEPING AND REPORTING**

**SECTION A: SELF-INSPECTION**

Self-inspections are required during normal business hours in accordance with the table below. When adverse weather or site conditions would cause the safety of the inspection personnel to be in jeopardy, the inspection may be delayed until the next business day on which it is safe to perform the inspection.

Table with 3 columns: Inspect, Frequency (at least once per 24 hours), and Inspection records must include. Rows include (1) Soil erosion, (2) E&S Measures, (3) Stormwater discharge, (4) Perimeter dikes, (5) Streams or other water courses, (6) Erosion stabilization measures.

NOTE: The rain inspection resets the required 7 calendar day inspection requirement.

**PART III SELF-INSPECTION, RECORDKEEPING AND REPORTING**

**SECTION B: RECORDKEEPING**

The approved E&S plan as well as any approved deviation shall be kept on the site. The approved E&S plan must be kept up-to-date throughout the coverage under this permit. The following items pertaining to the E&S plan shall be documented in the manner described:

- (1) Each E&S Measure has been installed and does not significantly deviate from the location, dimensions and relative elevations shown on the approved E&S Plan.
- (2) A plan of grading has been completed.
- (3) Ground cover is located and installed in accordance with the approved E&S Plan.
- (4) The maintenance and repair requirements for all E&S measures have been performed.

Additional Documentation
(a) This general permit as well as the certificate of coverage, after it is received.
(b) Records of inspections made during the previous 30 days. The permittee shall record the required observations on the Inspection Record Form provided by the Division or a similar inspection form that includes all the required elements. Use of electronically available records in lieu of the required paper copies will be allowed if shown to provide equal access and utility as the hard-copy records.

**PART III SELF-INSPECTION, RECORDKEEPING AND REPORTING**

**SECTION C: REPORTING**

1. Occurrences that must be reported
Permittees shall report the following occurrences:
(a) Visible sediment deposition in a stream or wetland.
(b) Oil spills:
- They are 25 gallons or more,
- They are less than 25 gallons but cannot be cleaned up within 24 hours,
- They cause sheen on surface waters (regardless of volume), or
- They are within 100 feet of surface waters (regardless of volume).

(c) Releases of hazardous substances in excess of reportable quantities under Section 311 of the Clean Water Act (Ref: 40 CFR 110.3 and 40 CFR 117.3) or Section 102 of CERCLA (Ref: 40 CFR 302.4) or G.S. 143-215.85.
(d) Anticipated bypasses and unanticipated bypasses.
(e) Noncompliance with the conditions of this permit that may endanger health or the environment.

2. Reporting Timeframes and Other Requirements
After a reporting becomes aware of an occurrence that must be reported, he shall contact the appropriate Division regional office within the timeframes and in accordance with the other requirements listed below. Occurrences outside normal business hours may also be reported to the Division's Emergency Response personnel at (800) 662-7956, (800) 858-0366 or (919) 733-3300.

Table with 2 columns: Occurrence and Reporting Timeframes (With Bypasses) and Other Requirements. Rows include (1) Visible sediment deposition, (2) Oil spills, (3) Releases of hazardous substances, (4) Anticipated bypasses, (5) Noncompliance.

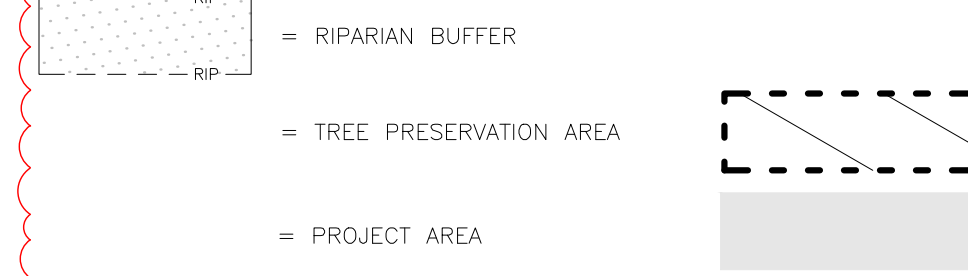
**NCGO1 SELF-INSPECTION, RECORDKEEPING AND REPORTING EFFECTIVE: 04/01/19**

**Demolition Notes:**

- CONTRACTOR SHALL CONTACT NORTH CAROLINA ONE-CALL CENTER (NC 811) BY DIALING 811 OR 1-800-632-4949 AT LEAST 72 HOURS IN ADVANCE OF ANY LAND DISTURBING ACTIVITY OR DIGGING AND HAVE ALL UNDERGROUND UTILITIES LOCATED PRIOR TO EXCAVATING OR TRENCHING.
- THE CONTRACTOR IS RESPONSIBLE FOR OBTAINING ALL LOCAL AND STATE PERMITS REQUIRED FOR DEMOLITION WORK.
- THE CONTRACTOR SHALL INDEMNIFY AND HOLD HARMLESS THE OWNER AND/OR ENGINEER FOR ANY AND ALL INJURIES AND/OR DAMAGES TO PERSONNEL, EQUIPMENT AND/OR EXISTING FACILITIES IN THE DEMOLITION AND CONSTRUCTION DESCRIBED IN THE PLANS AND SPECIFICATIONS.

**Wake County Basin Removal Sequence:**

- SCHEDULE A SITE MEETING WITH THE ENVIRONMENTAL CONSULTANT TO DETERMINE IF A BASIN CAN BE REMOVED. INSTALL SILT FENCING OR OTHER TEMPORARY EROSION CONTROL MEASURES AS NEEDED PRIOR TO REMOVAL OF THE BASIN.
- CONTACT NCDCEQ - RALEIGH REGIONAL OFFICE (919) 791-4200 TO DETERMINE THE DIVISION OF ENERGY, MINERAL AND LAND RESOURCES CONTACT PERSON TO RECEIVE DOWATERING NOTIFICATIONS. AT LEAST 10 DAYS PRIOR TO BEGINNING DOWATERING ACTIVITY, SEND EMAIL TO NCDCEQ-DEMUR CONTACT PERSON AND COPY ENVIRONMENTAL CONSULTANT THAT MET YOU ON SITE. THE EMAIL SHOULD INCLUDE: E&S JURISDICTION; WAKE COUNTY, WAKE COUNTY PROJECT; NAME, NUMBER, AND LOCATION (CITY/TOWN), ENVIRONMENTAL CONSULTANT NAME, AND ADDRESS THE FOLLOWING: A) REASON FOR CONVERSION, B) BASIN #, C) DOWATERING METHOD, AND D) ALL OTHER NECESSARY INFO FROM PART II, SECTION 6, ITEM 4 OF THE NCGO1. KEEP EMAIL FOR YOUR NPDES MONITORING DOCUMENTATION.
- AFTER RECEIVING POSITIVE CONFIRMATION FROM NCDCEQ-DEMUR THAT YOU MAY REMOVE THE BASIN OR ON-DAY #1, WHICHEVER IS SOONER, REMOVE BASINS) AND ASSOCIATED TEMPORARY DIVERSION DITCHES. IF PIPES NEED TO BE EXTENDED, PERFORM THIS OPERATION AT THIS TIME. FINE GRADE AREA IN PREPARATION FOR SEEDING.
- ALL DEMOLITION WASTE AND DEBRIS SHALL BE REMOVED BY THE CONTRACTOR AND DISPOSED OF IN A STATE APPROVED WASTE SITE AND IN ACCORDANCE WITH ALL LOCAL AND STATE CODES AND PERMIT REQUIREMENTS.
- THE BURNING OF CLEARED MATERIAL AND DEBRIS SHALL NOT BE ALLOWED UNLESS CONTRACTOR GETS WRITTEN AUTHORIZATION FROM THE LOCAL AUTHORITIES.



**Erosion Control Provisions:**

- NO PERSON MAY INITIATE A LAND DISTURBING ACTIVITY BEFORE NOTIFYING WAKE COUNTY WATERSHED MANAGEMENT OF THE DATE THAT THE LAND DISTURBING ACTIVITY WILL BEGIN.
- LAND DISTURBING ACTIVITY BEYOND THAT REQUIRED TO INSTALL APPROPRIATE EROSION CONTROL MEASURES ARE INSPECTED AND APPROVED BY THE ENGINEER.
- SCHEDULING OF A PRE-CONSTRUCTION CONFERENCE WITH THE WAKE COUNTY WATERSHED MANAGER, JEEVAN NEUPANE, PE (919-819-8907) PRIOR TO INITIATING LAND DISTURBING ACTIVITIES IS REQUIRED. FOR INSPECTION CALL 919-819-8907. 48 HOUR NOTICE IS REQUIRED.
- INSTALL TREE PROTECTION FENCING AROUND ALL AREAS OUTSIDE OF THE LIMITS OF DISTURBANCE AS SHOWN ON PLANS.
- PROVIDE 20' X 50' X 6" STONE CONSTRUCTION ENTRANCES AS SHOWN ON PLAN.
- SEED OR OTHERWISE PROVIDE GROUND COVER DEVICES OR STRUCTURES SUFFICIENT TO RESTRAIN EROSION FOR ALL EXPOSED SLOPES WITHIN 7 DAYS OF COMPLETION OF ANY PHASE OF GRADING ON PERIMETER AREAS AND SLOPES STEEPER THAN 3:1. ALL OTHER AREAS SHALL BE STABILIZED WITHIN 14 DAYS.

**Construction Sequence:**

- EROSION AND SEDIMENT CONTROL (E&S) PERMIT AND A CERTIFICATE OF COVERAGE (COC) MUST BE OBTAINED BEFORE ANY LAND DISTURBING ACTIVITIES OCCUR.
- CALL WAKE COUNTY WATERSHED MANAGER JEEVAN NEUPANE AT (919) 819-8907 A MINIMUM OF 48 HOURS IN ADVANCE TO SCHEDULE A PRE-CONSTRUCTION MEETING AND FOR NOTIFICATION OF PROJECT START UP.
- ANY DOWATERING ON THE SITE SHALL BE DONE THROUGH A SILT BAG THAT IS CONSTANTLY MONITORED.
- INSTALL GRAVEL CONSTRUCTION PAD, TEMPORARY DIVERSIONS, SILT FENCE, SEDIMENT BASINS OR OTHER MEASURES AS SHOWN ON THE APPROVED PLAN. CLEAR ONLY AS NECESSARY TO INSTALL THESE DEVICES. SEED TEMPORARY DIVERSIONS, BERMS AND BASINS IMMEDIATELY AFTER CONSTRUCTION.
- CALL WATERSHED MANAGER, JEEVAN NEUPANE FOR AN ON-SITE INSPECTION TO OBTAIN A CERTIFICATE OF COMPLIANCE.
- BEGIN CLEARING AND GRUBBING. MAINTAIN DEVICES AS NEEDED. ROUGH GRADE SITE. INSTALL TEMPORARY SKIMMER SEDIMENT BASINS, ALONG WITH TEMPORARY DIVERSION DITCHES THAT SHALL BE INSTALLED TO ENSURE AS MUCH FLOW AS POSSIBLE IS DIRECTED TO THE BASINS.
- AS ROUGH MASS GRADING CONTINUES, SKIMMER SEDIMENT BASINS SHALL BE MAINTAINED AND CLEANED OF SEDIMENT. IN THE FUTURE SITE-SPECIFIC EROSION CONTROL PLAN SKIMMER SEDIMENT BASINS TO BE ABANDONED SHALL BE REMOVED AS FOLLOWS: DEWATER THROUGH SILT BAG, CLEAN SEDIMENT, REMOVE BAFFLES, BACKFILL BASIN AND STABILIZE IMMEDIATELY. DEWATERING OPERATIONS THROUGH SILT BAGS SHALL BE MONITORED CONTINUOUSLY.
- STABILIZE STE AS AREAS ARE BROUGHT UP TO FINISH GRADE WITH VEGETATION, DITCH LININGS, ETC. SEED AND MULCH DENUDED AREAS PER GROUND STABILIZATION TIME FRAME.
- WHEN MASS GRADING IS COMPLETE AND ALL AREAS ARE STABILIZED COMPLETELY, CALL WATERSHED MANAGER JEEVAN NEUPANE FOR INSPECTION.
- IF SITE IS APPROVED, MAINTAIN TEMPORARY DIVERSIONS, SILT FENCE, SEDIMENT BASINS, ETC., AND SEED OR STABILIZED ANY RESULTING BARE AREAS. ALL REMAINING PERMANENT EROSION CONTROL DEVICES, SUCH AS VELOCITY DISSIPATORS, SHOULD NOW BE INSTALLED.
- WHEN VEGETATION HAS BECOME ESTABLISHED, CALL FOR FINAL SITE INSPECTION BY THE WATERSHED MANAGER, JEEVAN NEUPANE. OBTAIN CERTIFICATE OF COMPLETION.

**-Final Drawing - Issued for Permit Review Purposes Only**

Table with 2 columns: #, DATE. Row 1: 1, 1-APR-24. Row 2: 2, 1-JUN-24. Row 3: 3, 1-APR-24.

**REVISIONS:**

- PERFORM SEEDED PREPARATION, SEED, MULCH AND ANCHOR ANY RESULTING BARE AREAS IMMEDIATELY.
- INSTALL VELOCITY DISSIPATORS AND/OR LEVEL SPREADERS AS REQUIRED ON THE EROSION CONTROL PLAN.
- WHEN SITE IS FULLY STABILIZED, CALL ENVIRONMENTAL CONSULTANT FOR APPROVAL OF REMOVING REMAINING TEMPORARY EROSION CONTROL MEASURES AND ADVISE ON WHEN SITE CAN BE ISSUED A CERTIFICATE OF COMPLETION. NOTE: A MEETING SHOULD ALSO BE SCHEDULED WITH THE ENVIRONMENTAL CONSULTANT TO DETERMINE WHEN A BASIN MAY BE CONVERTED FOR STORMWATER USE. SOME MUNICIPALITIES MAY ALSO REQUIRE THIS.



**EROSION CONTROL NOTES & LEGEND WALLBROOK - LOT 8 MASS GRADING / EROSION CONTROL**

Town of Rolesville Project No. CID 24-03

Rolesville, Wake County, North Carolina S Main St. / US-401 Business & Wall Creek Drive

ARK CONSULTING GROUP PLLC logo and contact information: 27555-B Church Blvd, #7858, (757) 558-0888, www.arkconsultinggroup.com

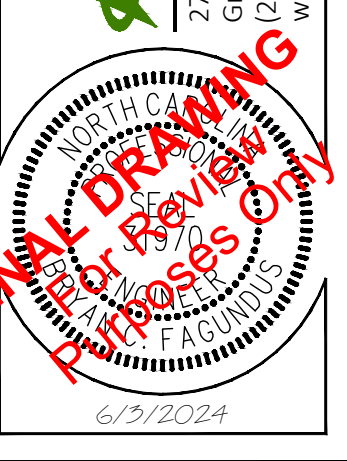
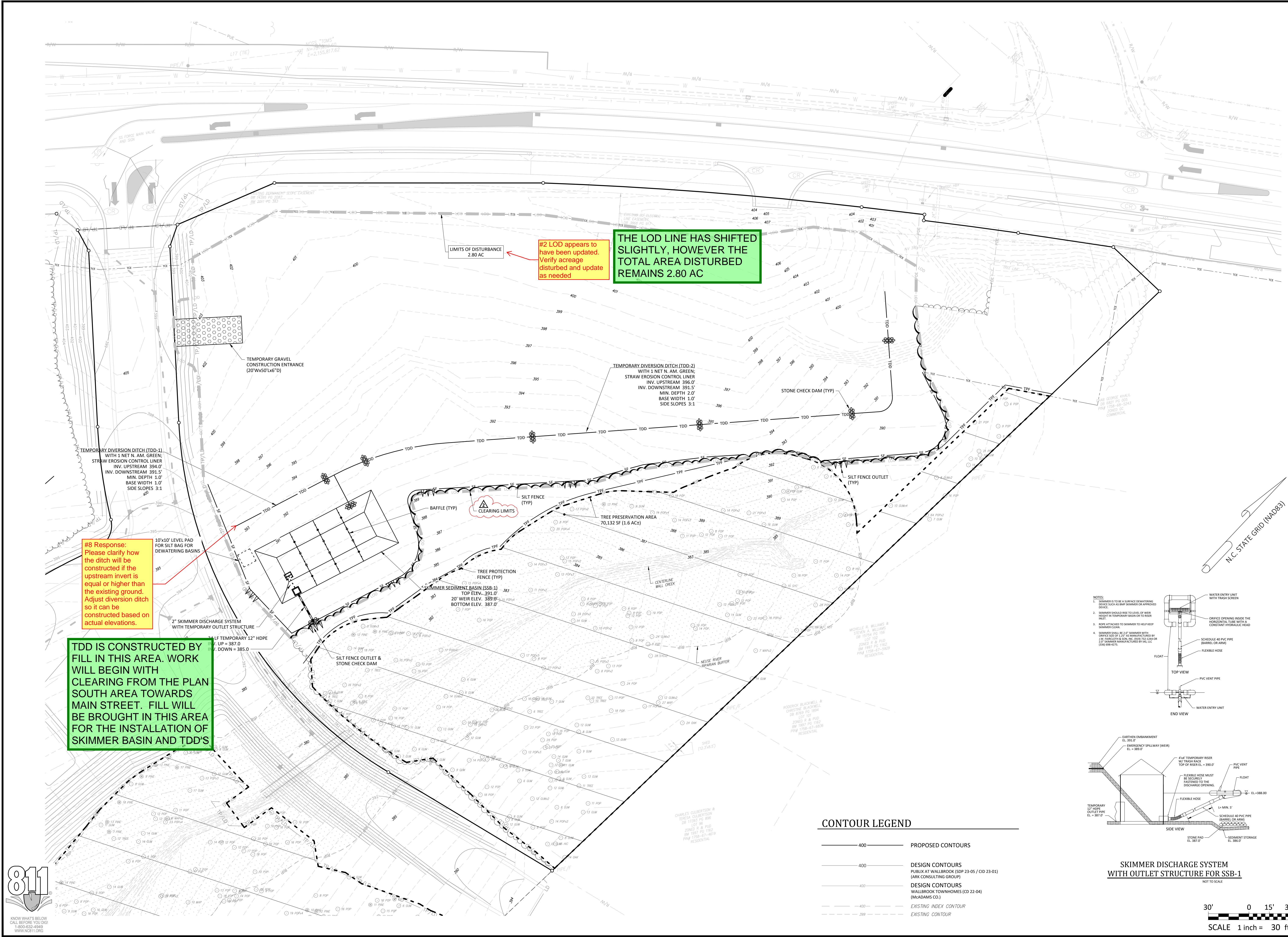


Table with 2 columns: Field, Value. Project Manager: BCF, Drawn By: DLC, Checked By: TN, Project Number: 24137, Drawing Number: D-1472

**C1.0**

Date: April 1, 2024



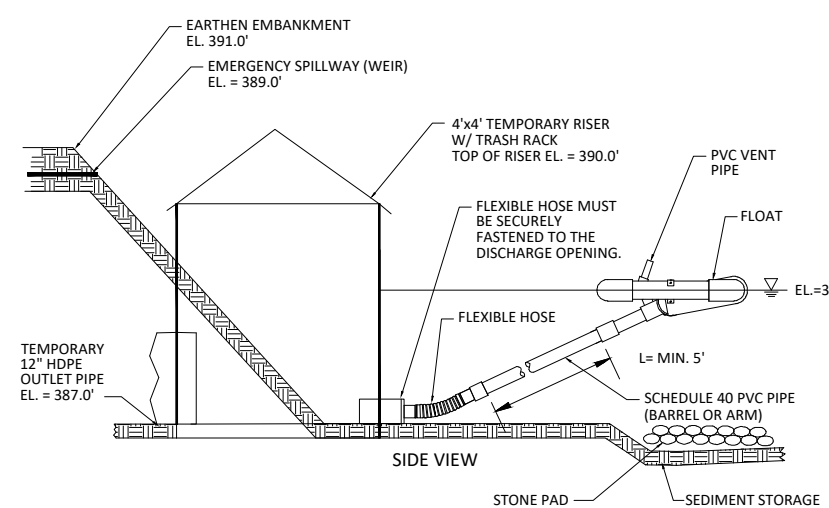
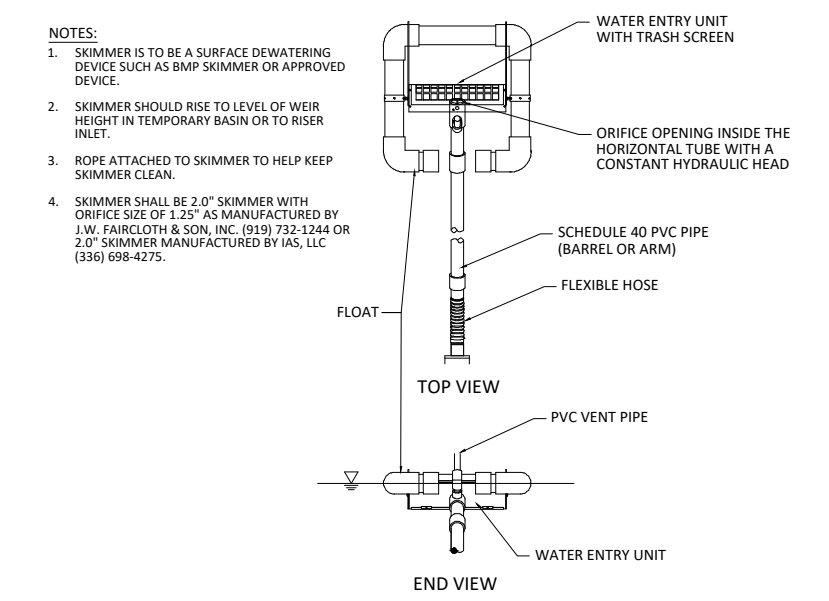


#2 LOD appears to have been updated. Verify acreage disturbed and update as needed

THE LOD LINE HAS SHIFTED SLIGHTLY, HOWEVER THE TOTAL AREA DISTURBED REMAINS 2.80 AC

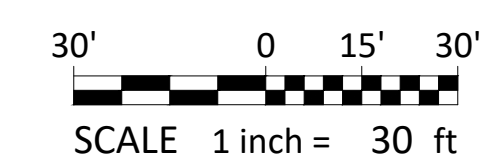
#8 Response: Please clarify how the ditch will be constructed if the upstream invert is equal or higher than the existing ground. Adjust diversion ditch so it can be constructed based on actual elevations.

TDD IS CONSTRUCTED BY FILL IN THIS AREA. WORK WILL BEGIN WITH CLEARING FROM THE PLAN SOUTH AREA TOWARDS MAIN STREET. FILL WILL BE BROUGHT IN THIS AREA FOR THE INSTALLATION OF SKIMMER BASIN AND TDD'S



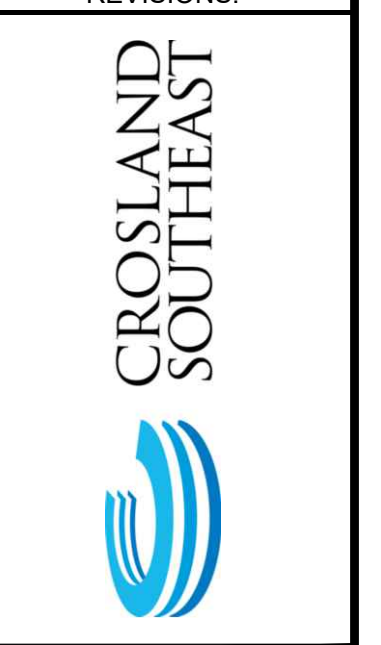
**CONTOUR LEGEND**

— 400 —	PROPOSED CONTOURS
— 400 —	DESIGN CONTOURS PUBLIC AT WALLBROOK (SDP 23-05 / CID 23-01) (ARK CONSULTING GROUP)
— 400 —	DESIGN CONTOURS WALLBROOK TOWNHOMES (CD 22-04) (MCADAMS CO.)
- - - 400 - - -	EXISTING INDEX CONTOUR
- - - 399 - - -	EXISTING CONTOUR



**- Final Drawing -  
Issued for Permit  
Review Purposes Only**

#	DATE	DESCRIPTION
2	3-JUN-24	REVISED PER REVIEW COMMENTS
1	1-APR-24	ISSUED FOR INITIAL REVIEW



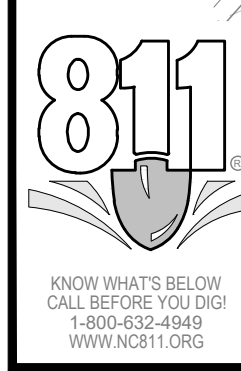
**EROSION CONTROL PHASE 1  
WALLBROOK - LOT 8  
MASS GRADING / EROSION CONTROL**  
Town of Rolesville Project No. CID 24-03  
Rolesville, Wake County, North Carolina  
S Main St. / US-401 Business & Wall Creek Drive

NC License: P-1199  
**ARK CONSULTING GROUP PLLC**  
ENGINEERS & PLANNERS  
2755-B Charles Blvd.  
Raleigh, NC 27608  
(757) 558-0888  
www.arkconsultinggroup.com

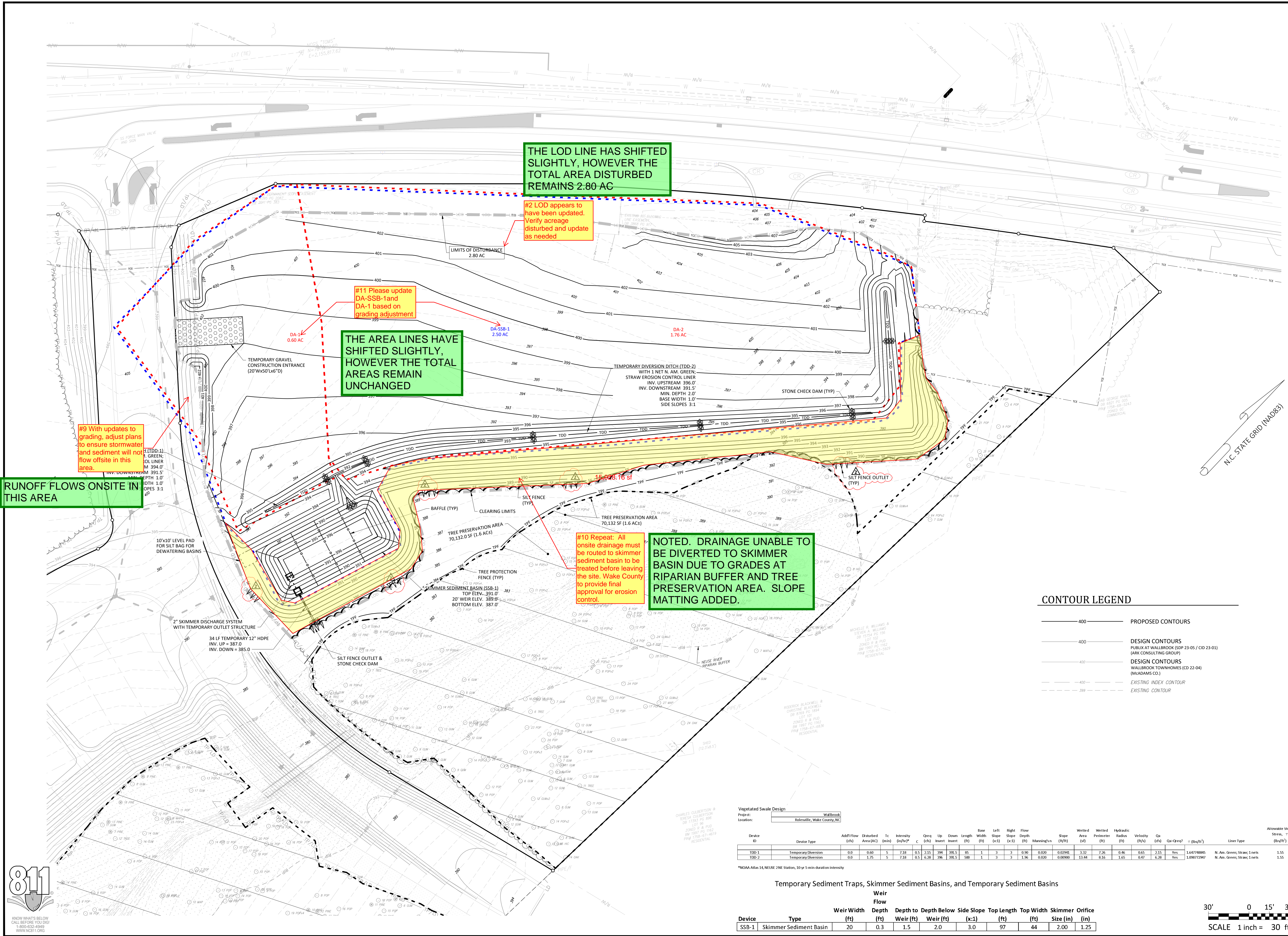
**Final Drawing**  
6/1/2024

Project Manager:	BCF
Drawn By:	DLC
Checked By:	TN
Project Number:	24137
Drawing Number:	D-1472

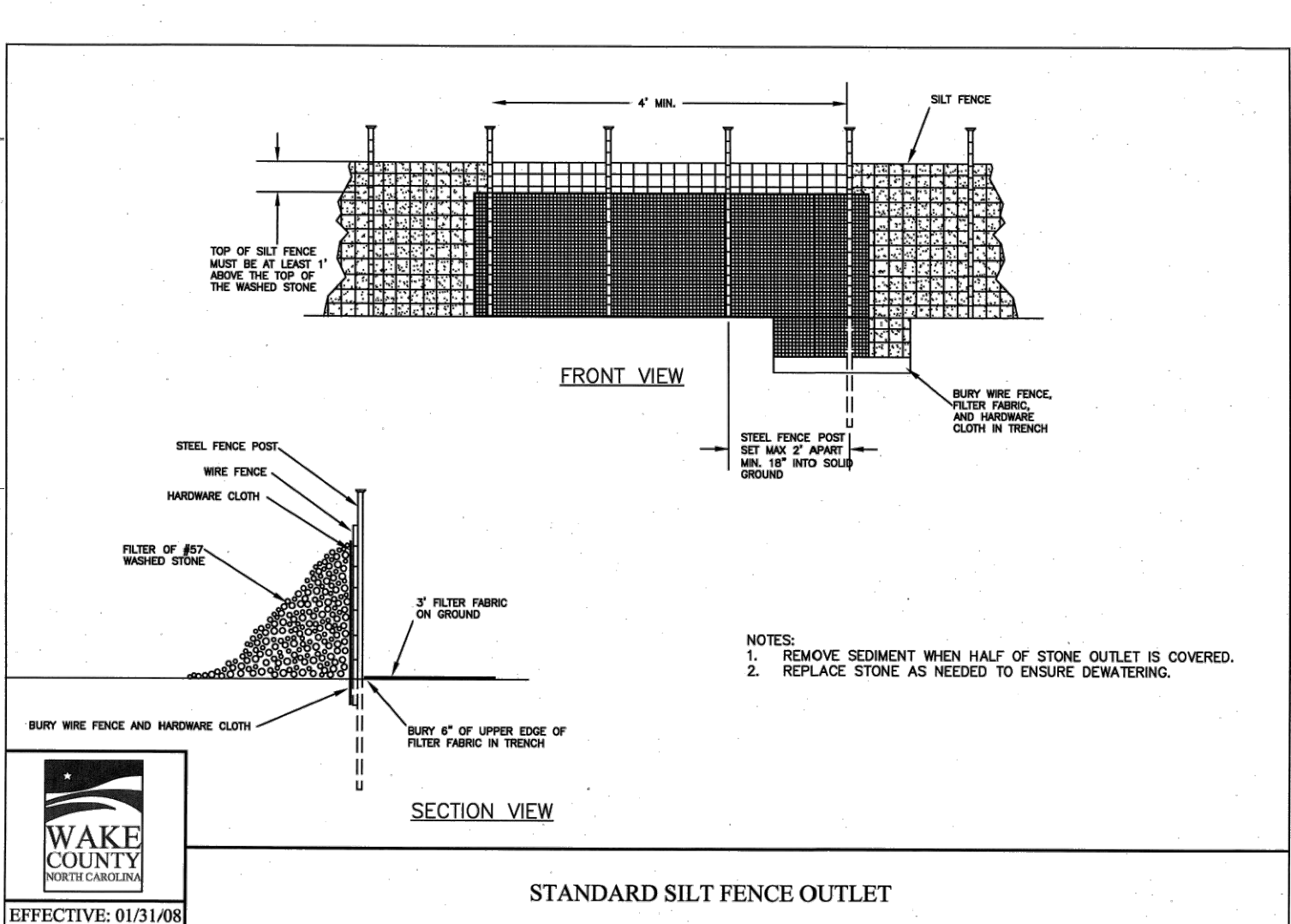
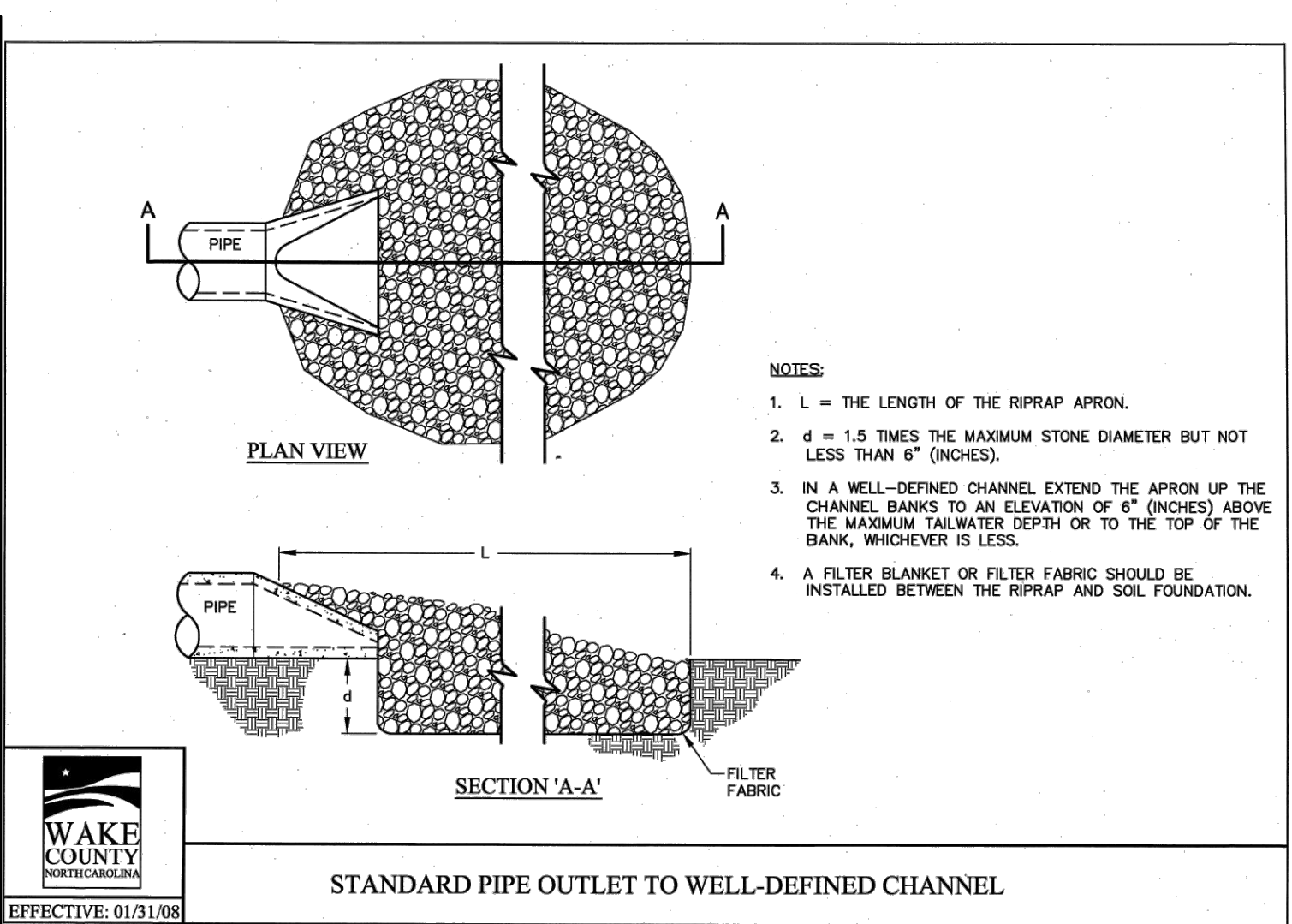
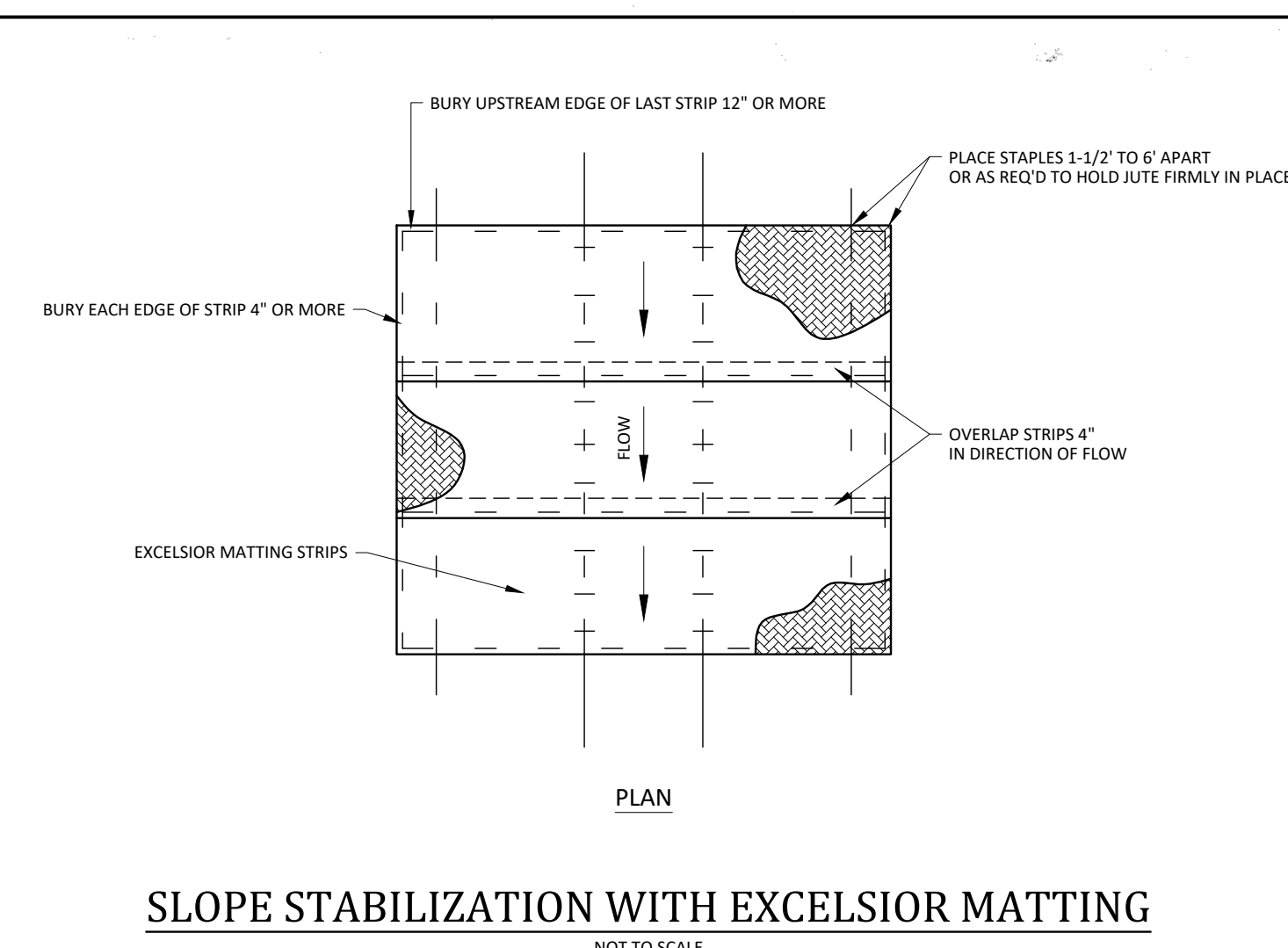
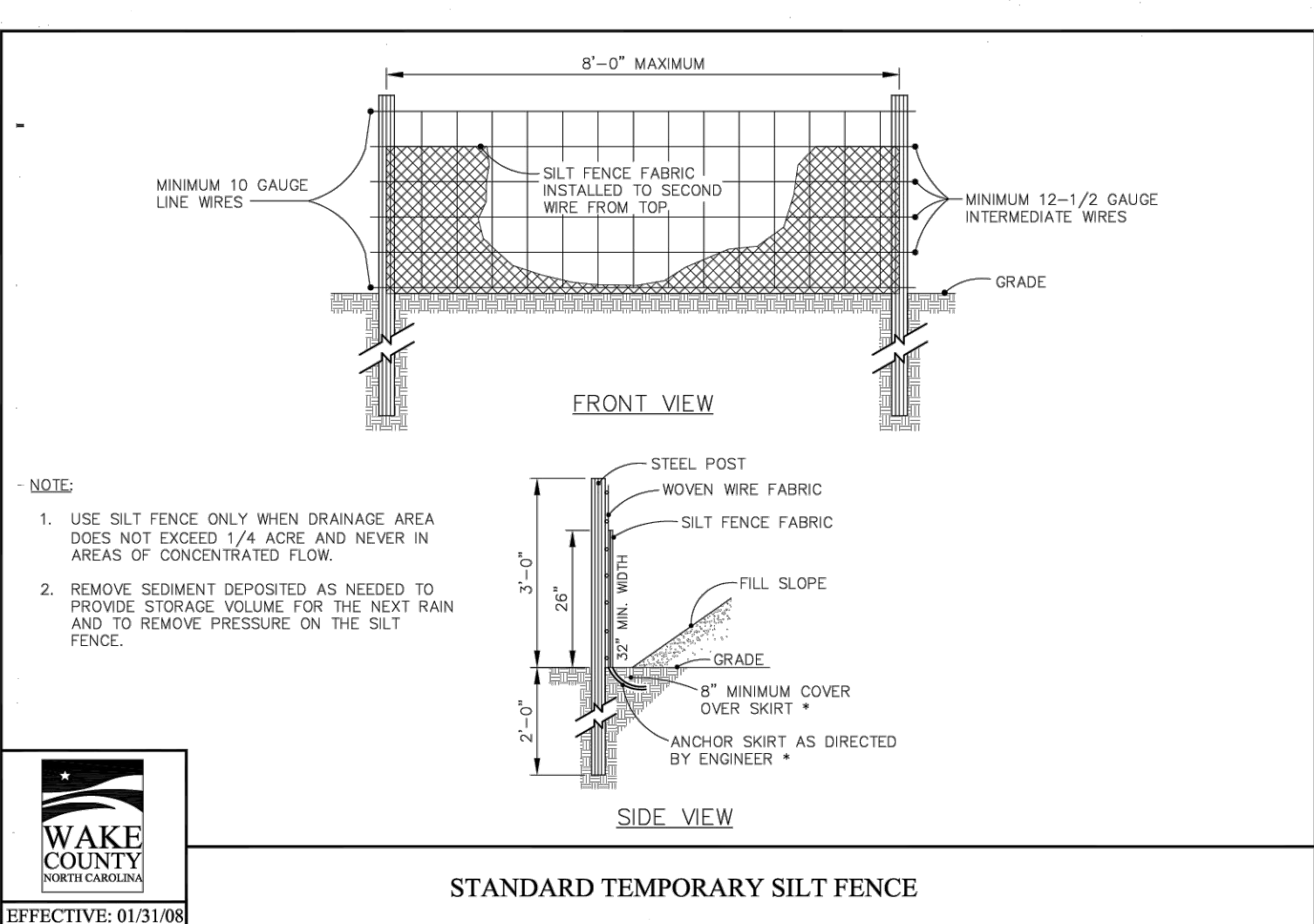
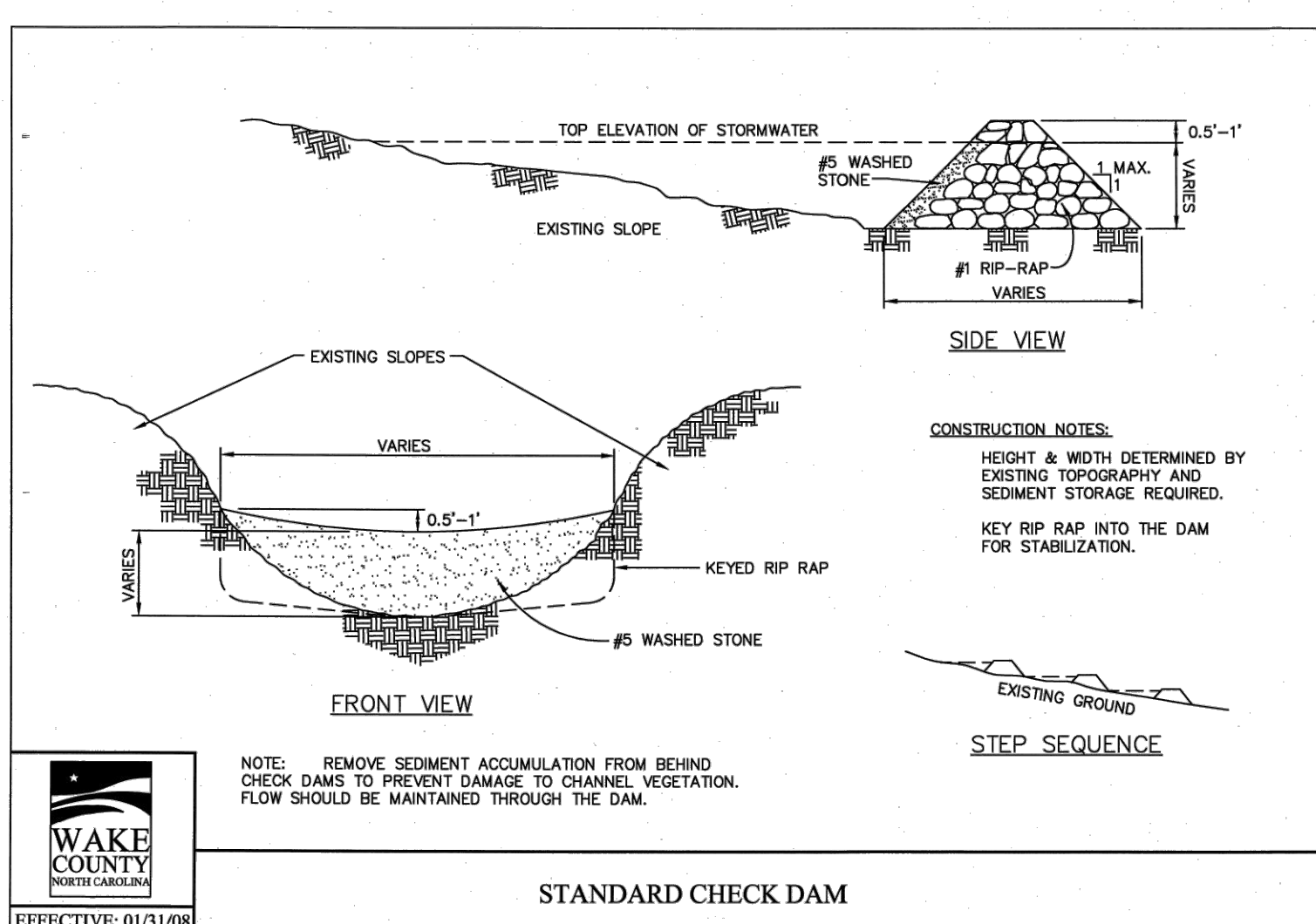
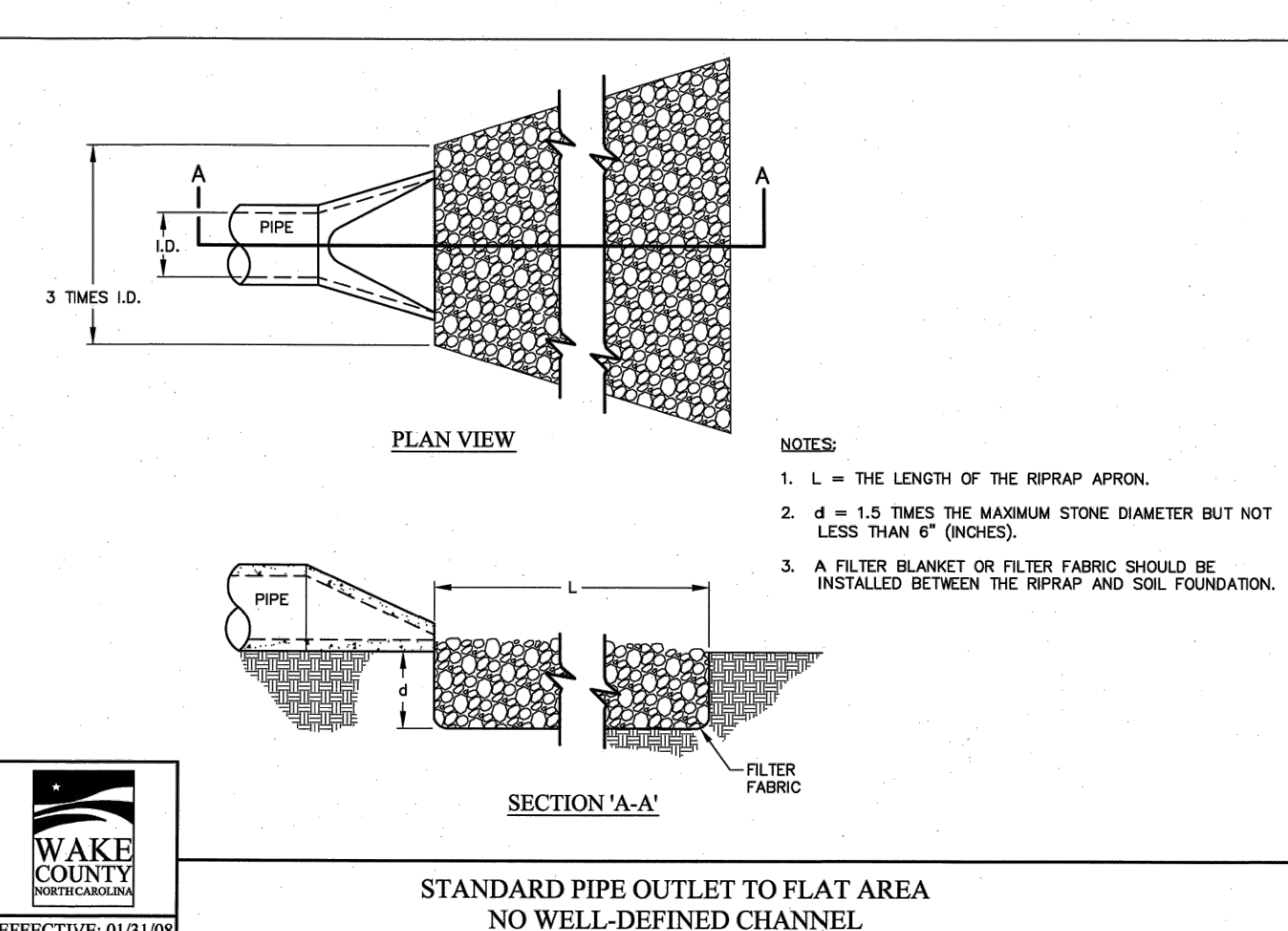
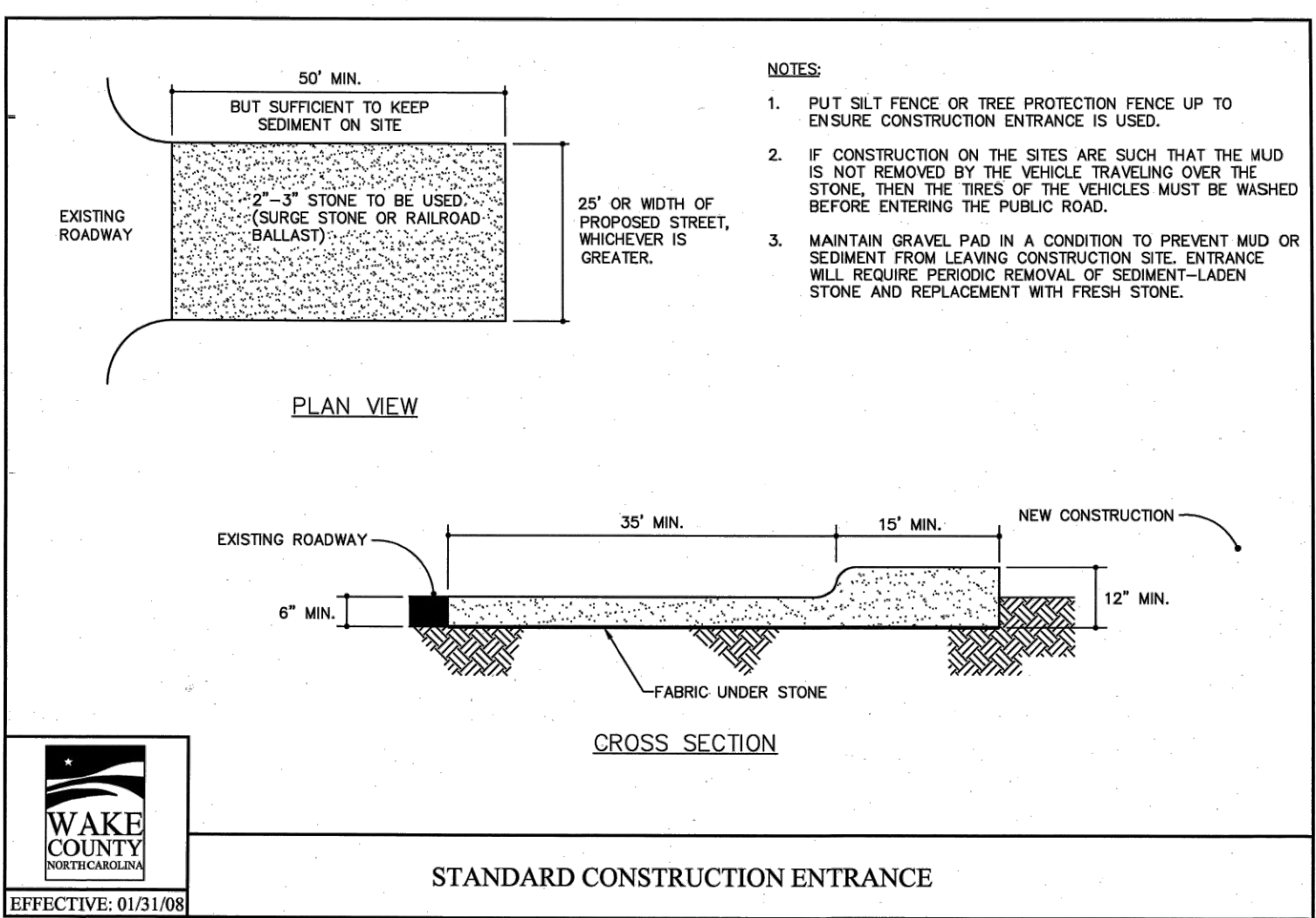
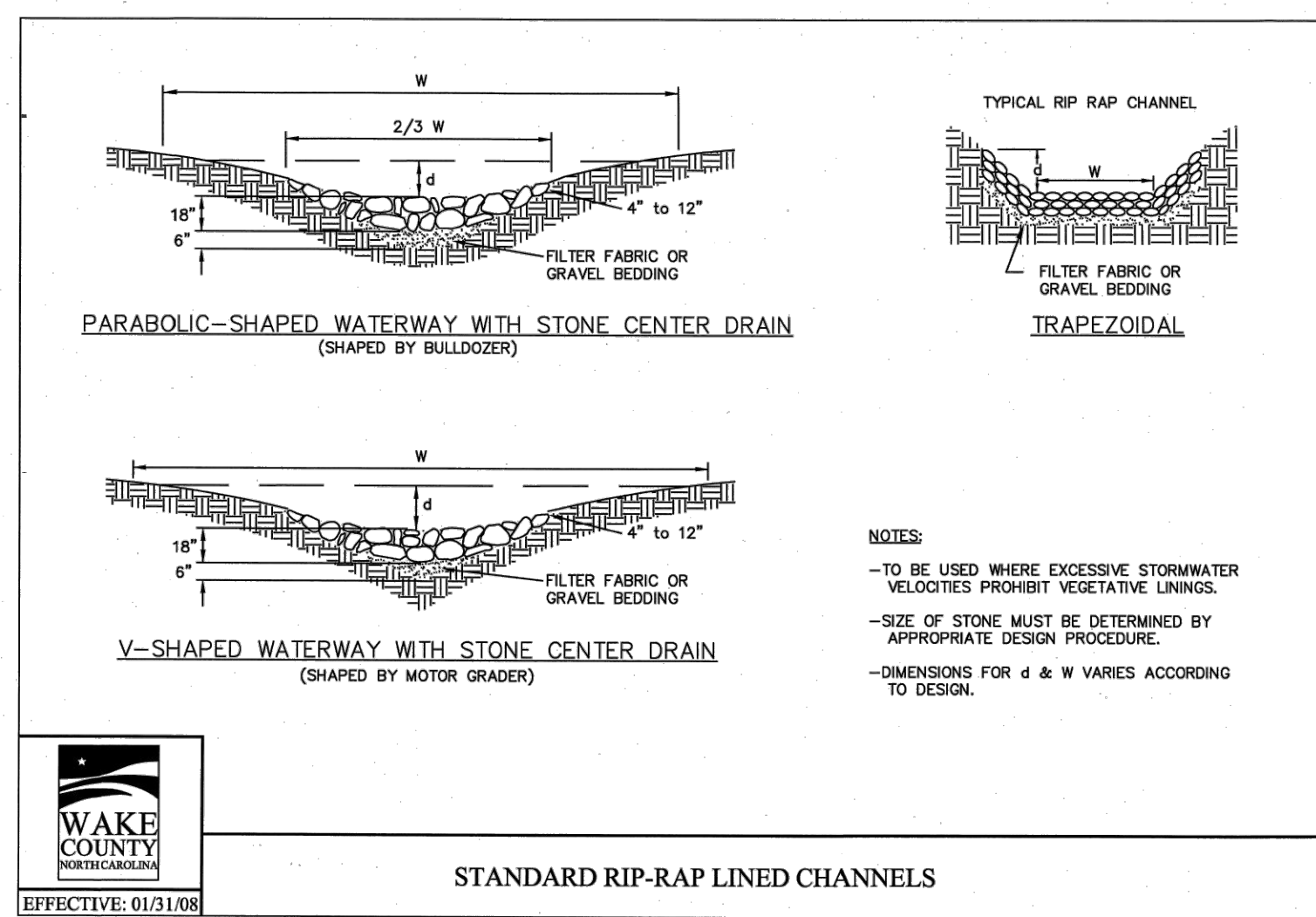
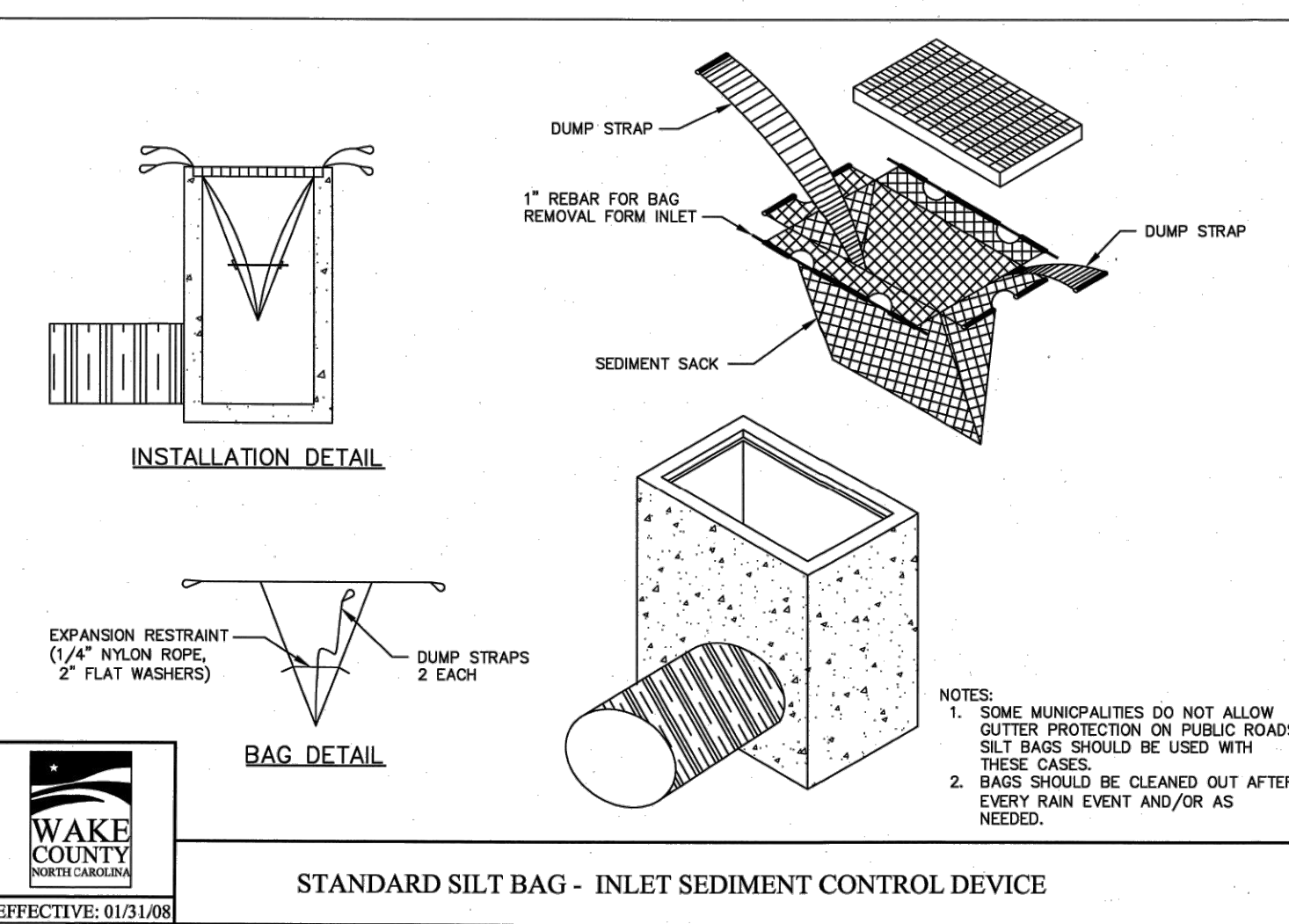
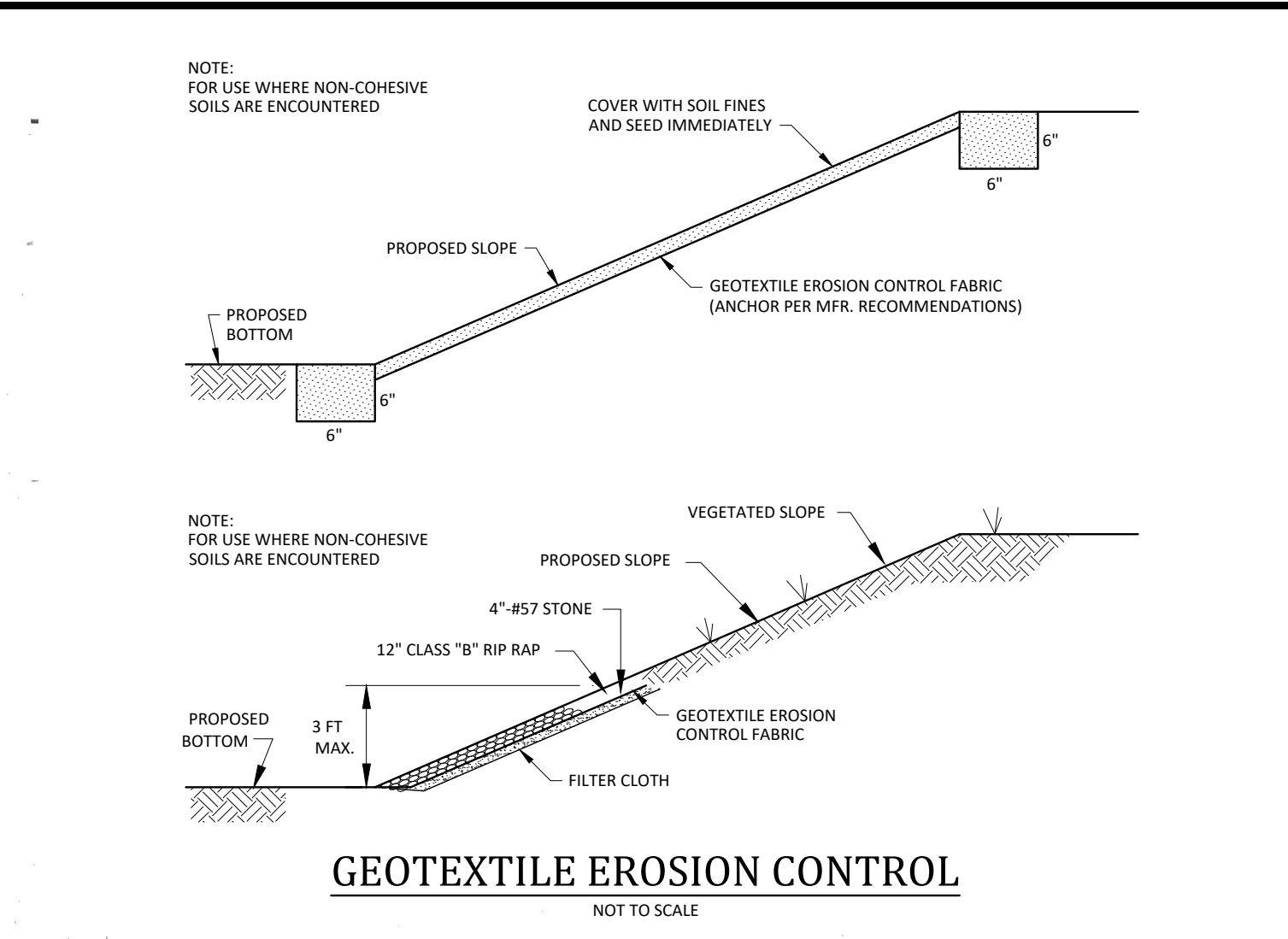
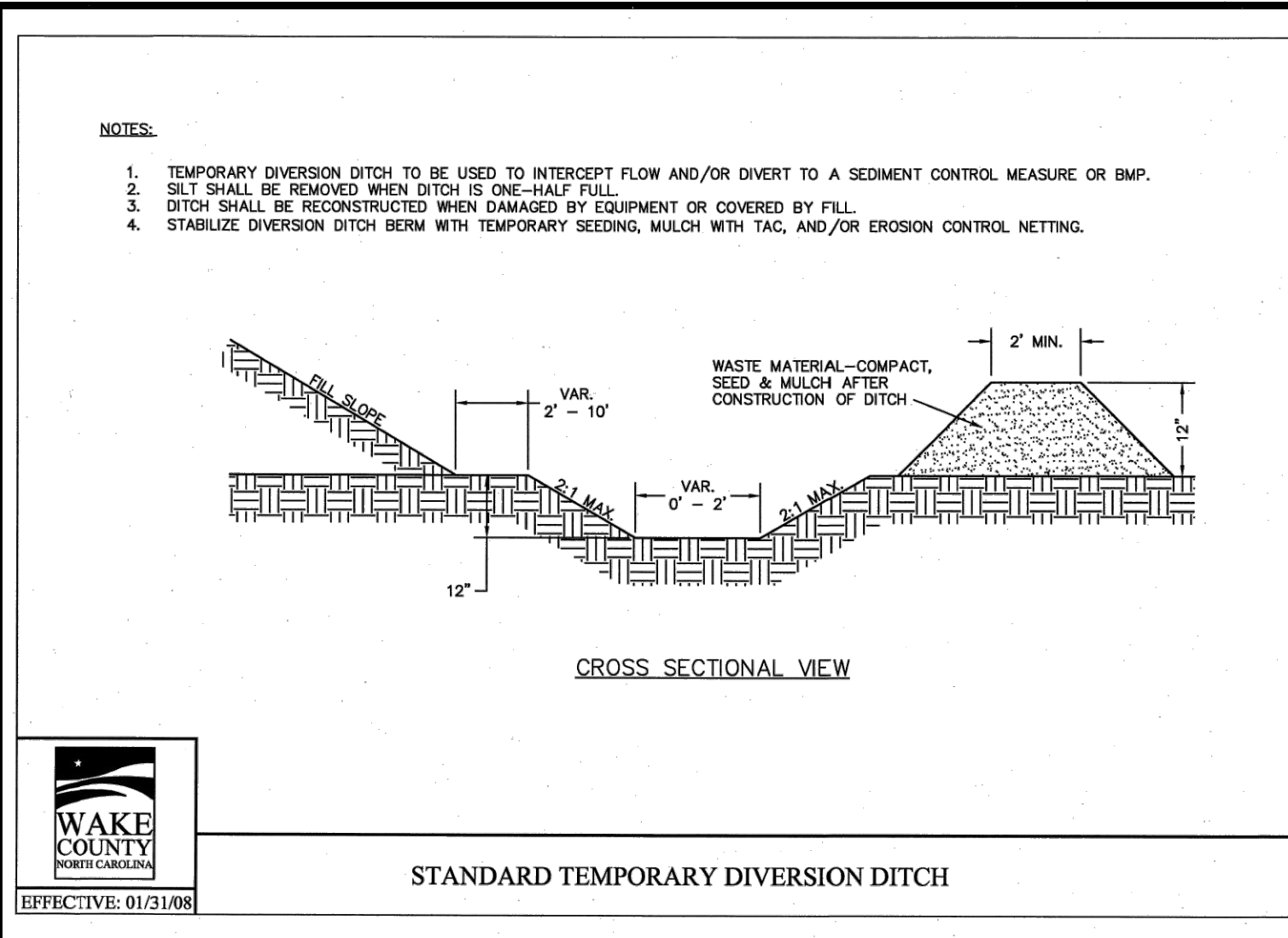
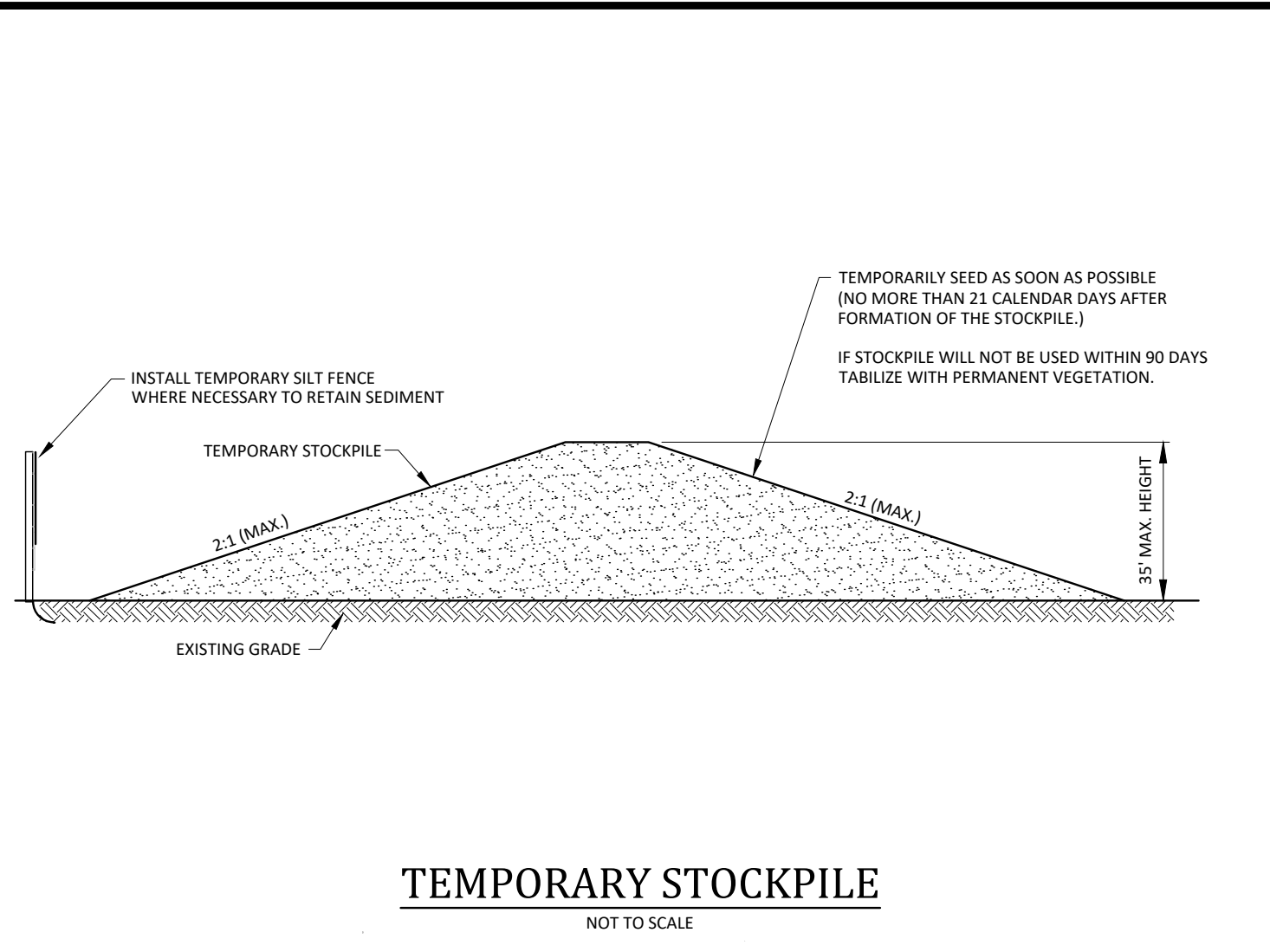
**C1.1**  
Date: April 1, 2024











**WAKE COUNTY Environmental Services**  
Effective September 1, 2008  
Soil stockpiles shall be located on the approved plan and shall adhere to the following requirements:

**Design Criteria**

- A 25-foot temporary maintenance and access easement shall be shown around all proposed stockpiles (erosion control measures surrounding the stockpile shall be shown at the outer limit of this easement).
- Stockpile footprints shall be setback a minimum of 25' from adjacent property lines.
- A silt fence shall be provided on the approved plan that stockpile height shall not exceed 35 feet.
- Stockpile slopes shall be 2:1 or flatter.
- Approved BMPs shall be shown on a plan to control any potential sediment loss from a stockpile.
- Stockpiling materials adjacent to a ditch, driveway, watercourse, wetland, stream buffer, or other body of water shall be avoided unless an alternative location is demonstrated to be unavailable.
- Any concentrated flow likely to affect the stockpile shall be diverted to an approved BMP.
- Off-site spoil or borrow areas must be in compliance with Wake County UDO and State Regulations. All spoil areas over an acre are required to have an approved sediment control plan. Developer/Contractor shall notify Wake County of any off-site disposal of soil, prior to disposal. Fill of FEMA Floodways and Non-encroachment Areas are prohibited except as otherwise provided by subsection 14-19-2 of the Wake County Unified Development Ordinance (certifications and permits required).

**Maintenance Requirements to be Noted on the Plan**

- Seeding or covering stockpiles with turps or mulch is required and will reduce erosion problems. Turps should be keyed in at the top of the slope to keep water from running underneath the plastic.
- If a stockpile is to remain for future use after the project is complete (builders, etc.), the financial responsible party must notify Wake County of a new responsible party for that stockpile.
- The approved plan shall provide for the use of staged seeding and mulching on a continual basis while the stockpile is in use.
- Establish and maintain a vegetative buffer at the toe of the slope (where practical).

**Seeding Specifications**

NPDES Stormwater Discharge Permit for Construction Activities (NCGO1 - 4/1/19)  
NCEQ/Division of Energy, Mineral and Land Resources

Soil Area Description	Seeding Rate (lbs/acre)	Seeding Method
1. Open areas 1/4 mile or more from any structure	300	Hand
2. Open areas less than 1/4 mile from any structure	300	Hand
3. Areas with existing vegetation	125	Hand
4. Areas with existing vegetation and some erosion	125	Hand
5. Areas with existing vegetation and some erosion	125	Hand
6. Areas with existing vegetation and some erosion	125	Hand
7. Areas with existing vegetation and some erosion	125	Hand
8. Areas with existing vegetation and some erosion	125	Hand
9. Areas with existing vegetation and some erosion	125	Hand
10. Areas with existing vegetation and some erosion	125	Hand

**Seeded Preparation:**

- Chisel compacted areas and spread topsoil three inches deep over adverse soil conditions, if available.
- Rip the entire area to six inches deep.
- Remove all loose rock, roots and other obstructions, leaving surface reasonably smooth and uniform.
- Apply agricultural lime, fertilizer and superphosphate uniformly and mix with soil (see mixture below).
- Continue tillage until a well pulverized, firm, reasonably uniform seedbed is prepared four to six inches deep.
- Seed on a freshly prepared seedbed and cover seed lightly with seeding equipment or cultipack after seeding.
- Mulch immediately after seeding and anchor mulch.
- Inspect all seeded areas and make necessary repairs or reseedings within the planting season, if possible. If stand should be more than 60% damaged, re-establish following the original lime, fertilizer and seeding rates.
- Consult Wake County Soil & Water or NC State Cooperative Extension on maintenance treatment and fertilization after permanent cover is established.

**Mixture**

Agricultural Limestone	2 tons/acre (3 tons/acre in clay soils)
Fertilizer	1,000 lbs/acre - 10-10-10
Superphosphate	500 lbs/acre - 20% analysis
Mulch	2 tons/acre - small grain straw
Anchor	Asphalt emulsion at 400 gals/acre

**Seeding Schedule**  
For Shoulders, Side Ditches, Slopes (Max 3:1)

Date	Type	Planting Rate
Aug 15 - Nov 1	Tall Fescue	300 lbs/acre
Nov 1 - Mar 1	Tall Fescue & Abruzzi Rye	300 lbs/acre
Mar 1 - Apr 15	Tall Fescue	300 lbs/acre
Apr 15 - Jun 30	Hulled Common Bermudagrass	25 lbs/acre
Jul 1 - Aug 15	Tall Fescue AND Browntop Millet or Sorghum-Sudan Hybrids**	125 lbs/acre (Tall Fescue); 35 lbs/acre (Browntop Millet); 30 lbs/acre (Sorghum-Sudan Hybrids)**

**For Shoulders, Side Ditches, Slopes (3:1 to 2:1)**

Date	Type	Planting Rate
Mar 1 - Jun 1	Secoia Lespedeza (scarified) and use the following combinations:	50 lbs/acre (Secoia Lespedeza);
Mar 1 - Apr 15	Add Tall Fescue	120 lbs/acre
Mar 1 - Jun 30	Or add Weeping Love grass	10 lbs/acre
Mar 1 - Jun 30	Or add Hulled Common Bermudagrass	25 lbs/acre
Jun 1 - Sep 1	Tall Fescue AND Browntop Millet or Sorghum-Sudan Hybrids**	120 lbs/acre (Tall Fescue); 35 lbs/acre (Browntop Millet); 30 lbs/acre (Sorghum-Sudan Hybrids)**
Sep 1 - Nov 1	Secoia Lespedeza (unhulled - unscarified) AND Tall Fescue	70 lbs/acre (Secoia Lespedeza); 120 lbs/acre (Tall Fescue)
Nov 1 - Mar 1	AND Abruzzi Rye	25 lbs/acre

Consult Wake County Soil & Water Conservation District or NC State Cooperative Extension for additional information concerning other alternatives for vegetation of denuded areas. The above vegetation rates are those that do well under local conditions; other seeding rate combinations are possible.

\*\* TEMPORARY: Reseed according to optimum season for desired permanent vegetation. Do not allow temporary cover to grow more than 12" in height before moving; otherwise, fescue may be shaded out.

**-Final Drawing - Issued for Permit Review Purposes Only**

**REVISIONS:**

#	DATE	DESCRIPTION
1	1-APR-24	ISSUED FOR INITIAL REVIEW
2	3-JUN-24	REVISED PER REVIEW COMMENTS

**CROSLAND SOUTHEAST**

**WALLBROOK - LOT 8 MASS GRADING / EROSION CONTROL**  
Town of Rolesville Project No. CID 24-03

**DETAILS**

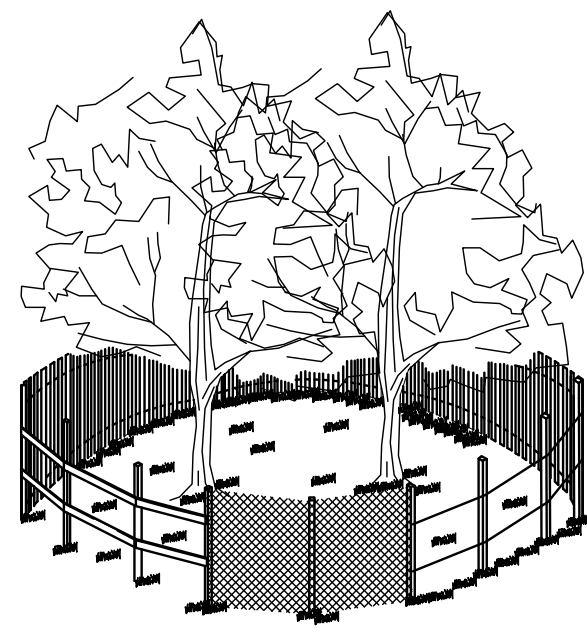
NC License: P-1199  
**ARK CONSULTING GROUP PLLC**  
ENGINEERS & PLANNERS  
2755-B Charles Blvd.  
Wendell, NC 27585  
(757) 558-0888  
www.arkconsultinggroup.com

Project Manager: BCF  
Drawn By: DLC  
Checked By: TN  
Project Number: 24137  
Drawing Number: D-1472

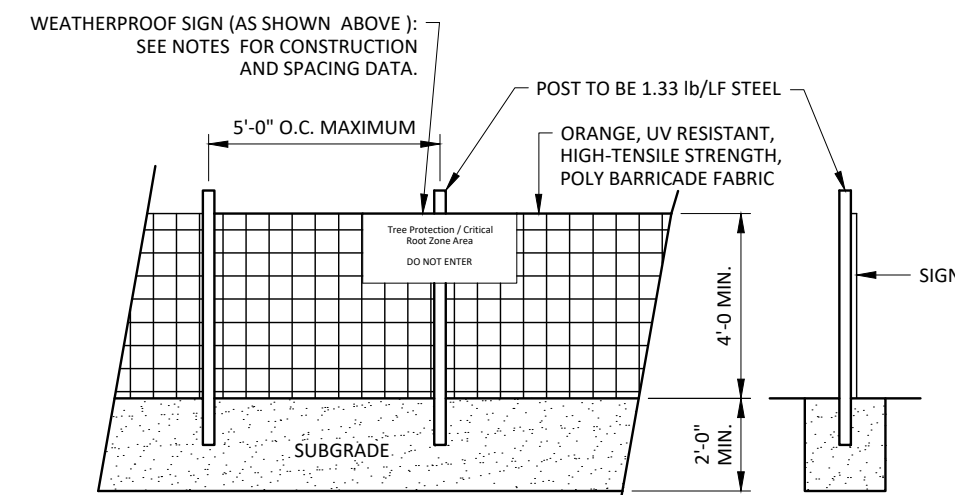
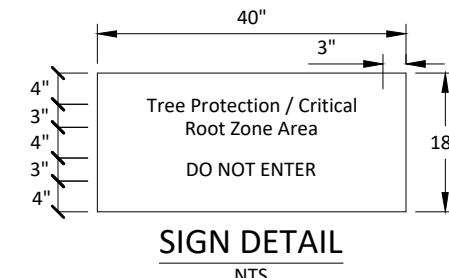
**C2.1**

Date: April 1, 2024

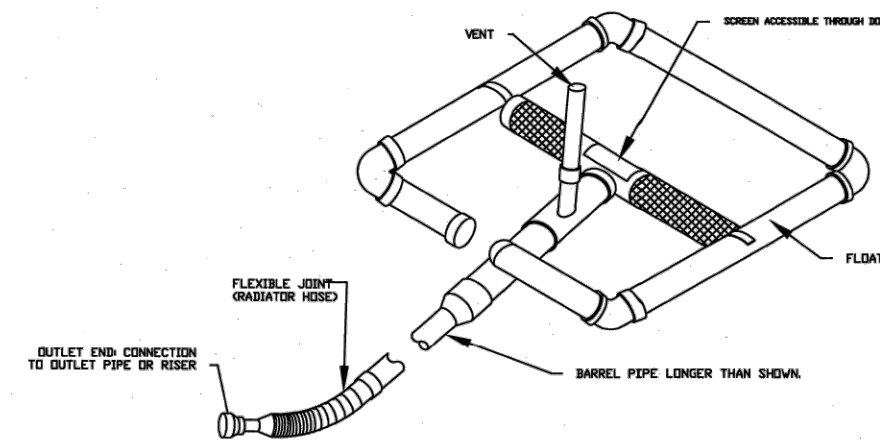




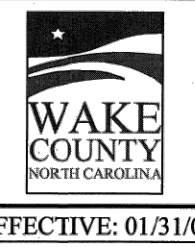
- NOTES:
1. SIGNS ARE TO BE PLACED NO GREATER THAN 200' ON CENTER. PLACE SIGN AT EACH END OF LINEAR TREE PROTECTION AREA AND 200' ON CENTER THEREAFTER.
  2. FOR TREE PROTECTION AREAS LESS THAN 200' IN PERIMETER, PROVIDE NO LESS THAN ONE SIGN PER PROTECTION AREA.
  3. ATTACH SIGNS SECURELY TO FENCE POSTS AND FABRIC.
  4. WARNING SIGNS TO BE MADE OF DURABLE, WEATHERPROOF MATERIAL.
  5. LETTERS ARE TO BE 3" HIGH MINIMUM, CLEARLY LEGIBLE, AND SPACED AS DETAILED.
  6. INSTALL TREE PROTECTION FENCE & SIGNAGE PRIOR TO CALLING FOR THE INITIAL ON-SITE INSPECTION BY A NCDENR INSPECTOR. MAINTAIN TREE PROTECTION FENCE THROUGHOUT DURATION OF PROJECT. ADDITIONAL SIGNS MAY BE REQUIRED BY NCDENR BASED ON ACTUAL FIELD CONDITIONS.



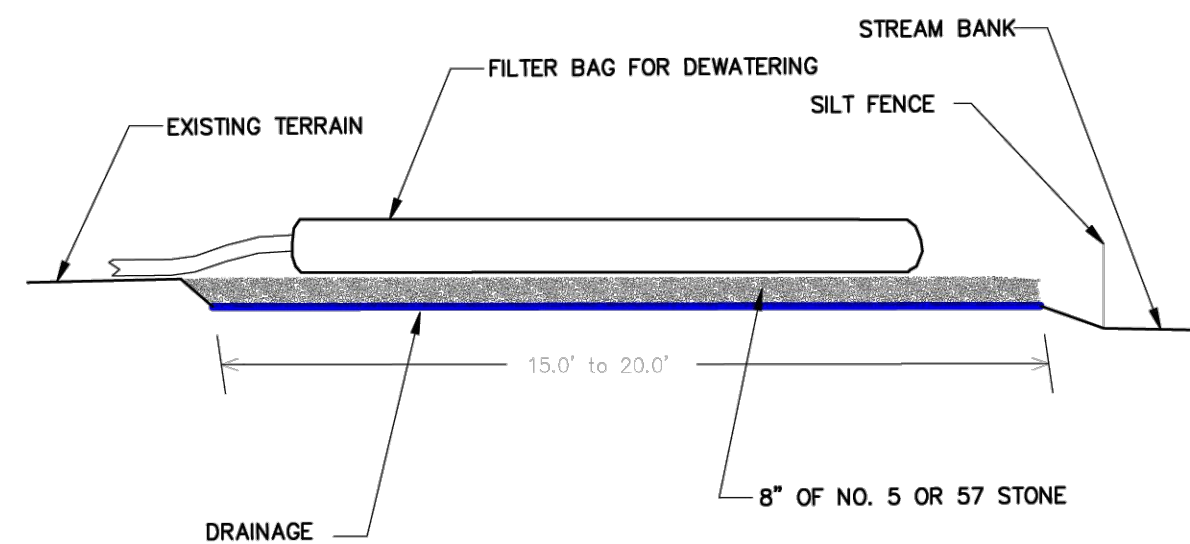
TREE PROTECTION FENCE  
NOT TO SCALE



STANDARD SKIMMER DETAIL

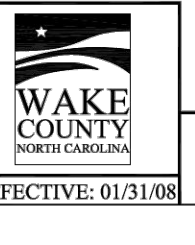


EFFECTIVE: 01/31/08



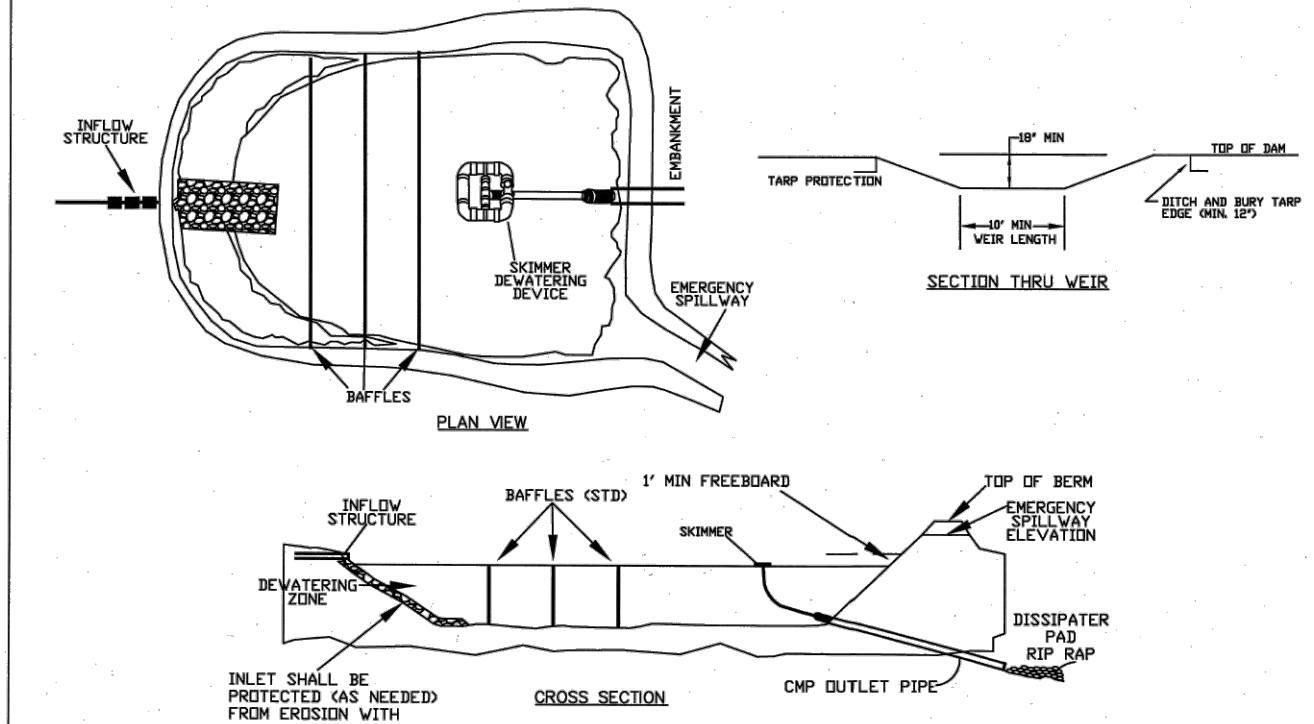
- NOTES
- PROVIDE STABILIZED OUTLET TO STREAM BANK. WOOD PALLETES MAY BE USED IN LIEU OF STONE AND GEOTEXTILE AS DIRECTED. A SUFFICIENT NUMBER OF PALLETES MUST BE PROVIDED TO ELEVATE THE ENTIRE FILTER BAG FOR DEWATERING ABOVE NATURAL GROUND.

NOT TO SCALE



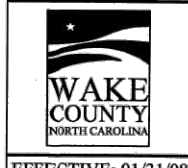
EFFECTIVE: 01/31/08

STANDARD FILTER BAG FOR DEWATERING ACTIVITIES

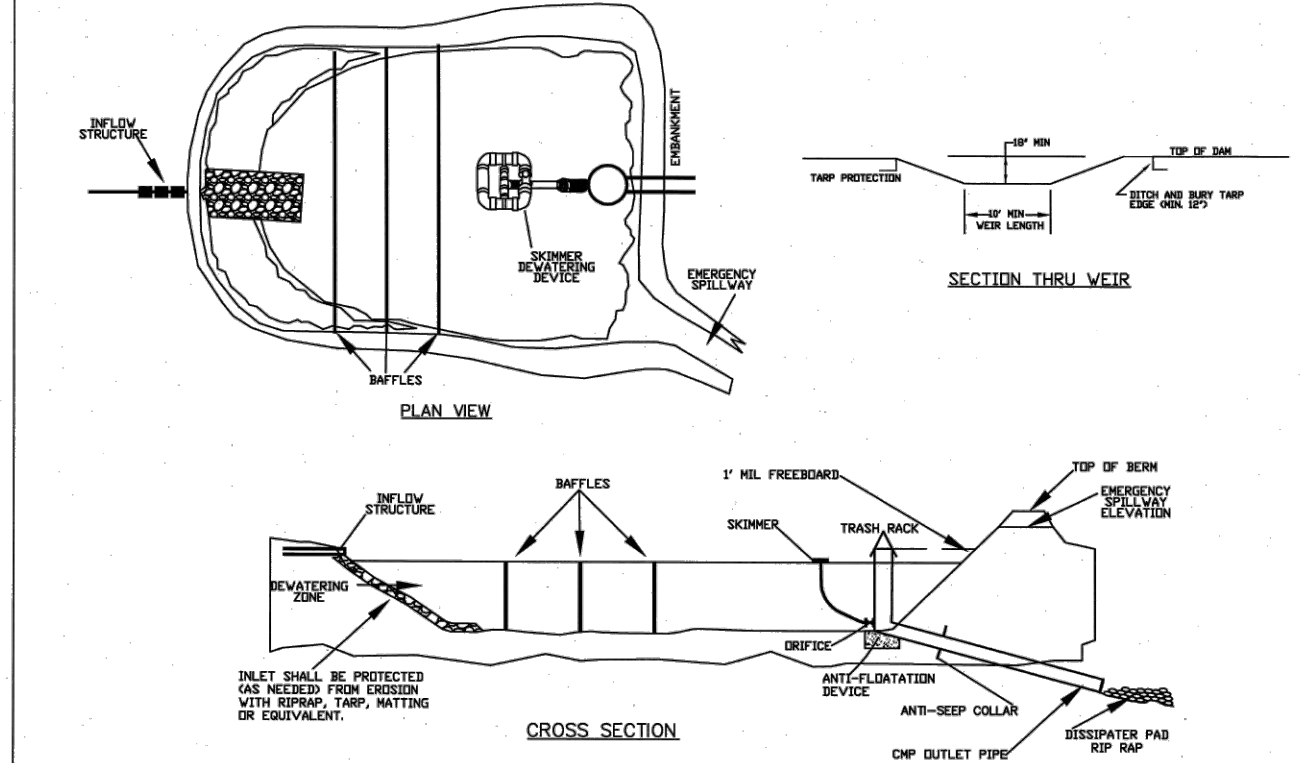


STANDARD SKIMMER BASIN

- NOTES:
1. BASIN SHOULD BE CLEANED OUT WHEN CAPACITY REACHES AN ELEVATION REPRESENTING THAT THE BASIN IS HALF-FULL.
  2. THE TAMP USED TO PROTECT THE BERM SHALL BE THE WEIGHT SPECIFIED. THE LENGTH OF THE TAMP SHALL BE ACCORDING TO AVAILABLE SUPPLY. IF MULTIPLE TAMPS ARE TO BE USED, THEN TAMPS SHALL BE OVERLAPPED AT LEAST 12\"/>

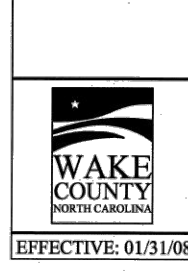


EFFECTIVE: 01/31/08

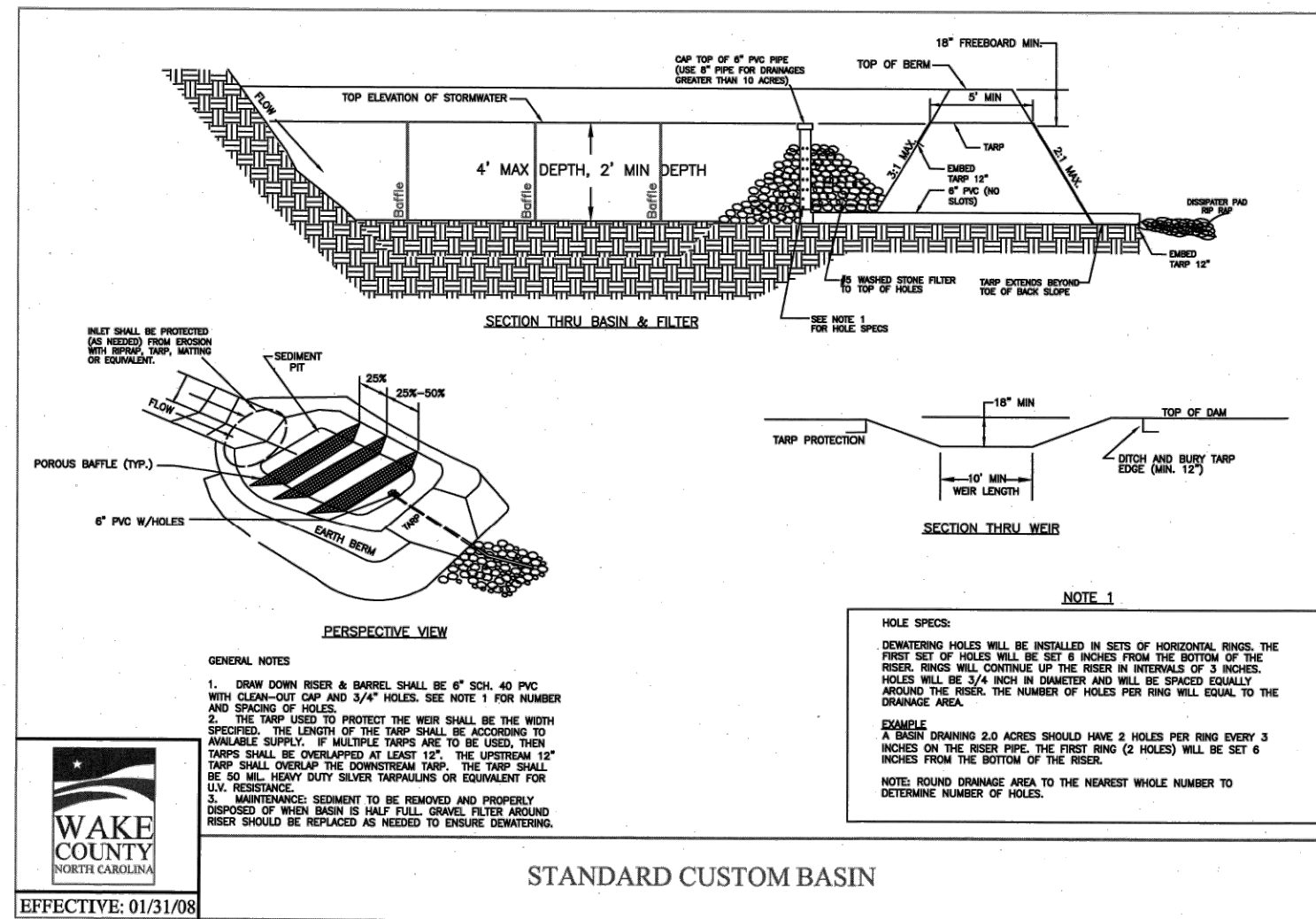


STANDARD SKIMMER ATTACHED TO PERMANENT RISER

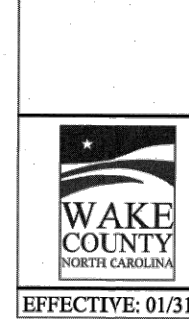
- NOTES:
1. BASIN SHOULD BE CLEANED OUT WHEN CAPACITY REACHES AN ELEVATION REPRESENTING THAT THE BASIN IS HALF-FULL.
  2. THE TAMP USED TO PROTECT THE BERM SHALL BE THE WEIGHT SPECIFIED. THE LENGTH OF THE TAMP SHALL BE ACCORDING TO AVAILABLE SUPPLY. IF MULTIPLE TAMPS ARE TO BE USED, THEN TAMPS SHALL BE OVERLAPPED AT LEAST 12\"/>



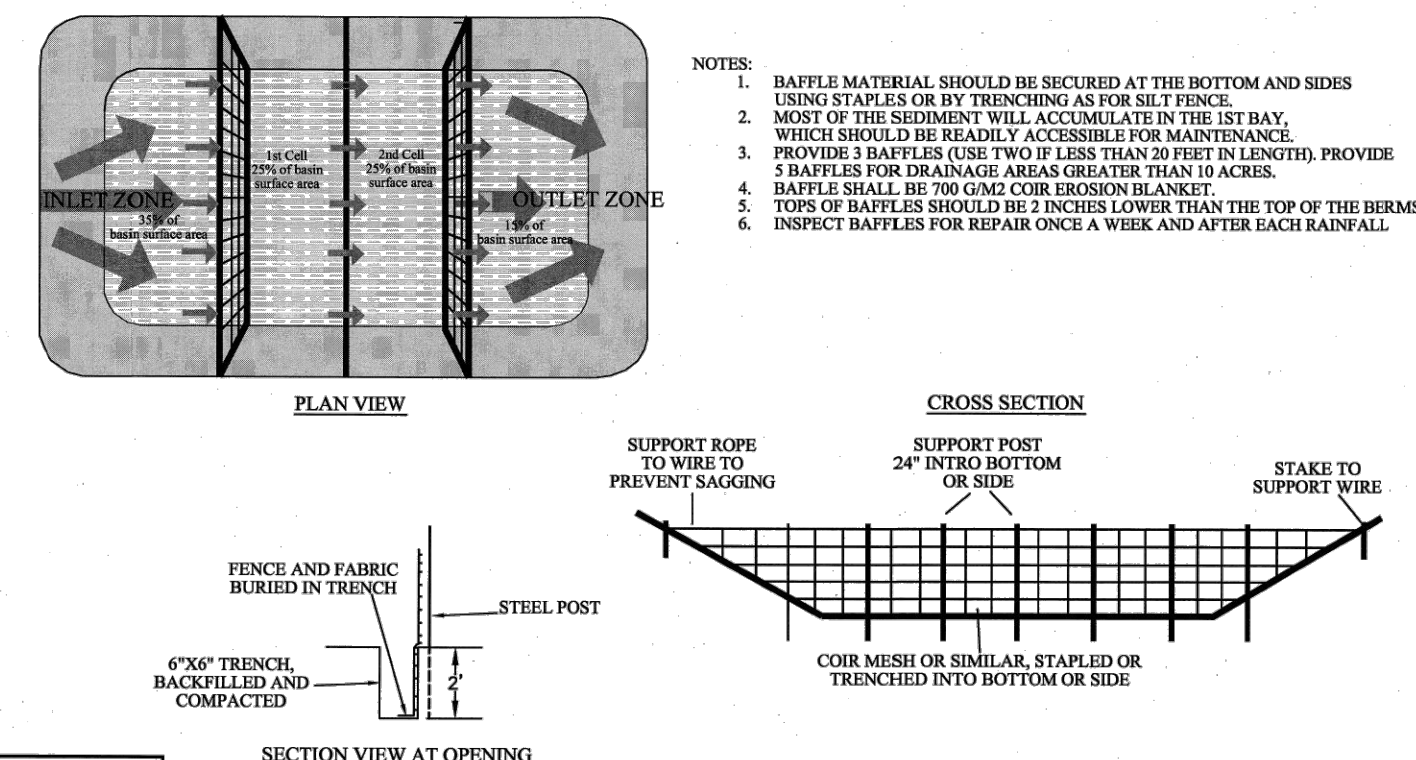
EFFECTIVE: 01/31/08



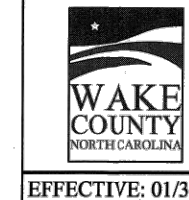
STANDARD CUSTOM BASIN



EFFECTIVE: 01/31/08



STANDARD BAFFLES DETAIL



EFFECTIVE: 01/31/08

- Final Drawing -  
Issued for Permit  
Review Purposes Only



DETAILS  
**WALLBROOK - LOT 8**  
MASS GRADING / EROSION CONTROL  
Town of Rolesville Project No. CID 24-03  
S Main St. / US-401 Business & Wall Creek Drive  
Rolesville, Wake County, North Carolina

NC License: P-1109  
**ARK CONSULTING GROUP PLLC**  
ENGINEERS & PLANNERS  
2755-B Charles Blvd  
Raleigh, NC 27608  
(919) 875-8888  
www.arkconsultinggroup.com

6/1/2024

Project Manager: BCF  
Drawn By: DLC  
Checked By: TN  
Project Number: 24137  
Drawing Number: D-1472

**C2.2**

Date: April 1, 2024