

You are showing the waterline in Mitchell Mill Rd in a light grey pen which would imply that this waterline is existing or is not the responsibility of being install by this development. Please show the full waterline extension bringing water to this development which will be the responsibility of this development for construction.

SREG: The waterline style has been updated to be shown as proposed

Water mains shall be located either in the north or east side of the street pavement.

SREG: All water mains have been updated to be located in either the north side or east side of the proposed roads

You will likely need a note on the cover stating that this development is relying upon sanitary sewer improvements for sewer capacity permitted as "Harris Creek Sanitary Sewer Replacement S-5037". These improvements must be installed, inspected and accepted by Raleigh prior to lots being recorded for this development.

SREG: This note has been added to the cover sheet, see C1.0

ADJOINER INFORMATION			
1	N/F MILLS, JOSEPHUS DANIELS PIN: 175785243 DB: 2494 PG: 585	24	N/F JONES, CHARLES E PIN: 175784902 DB: 8581 PG: 2079
2	N/F JONES, CHARLES SPENCER JONES, SHARON PIN: 175785833 DB: 13359 PG: 400	25	N/F CARLE, SCOTT CARLE, THERESA PIN: 175779056 DB: 14863 PG: 2493
3	N/F JONES, CHARLES, ET.AL PIN: 175785633 DB: 13359 PG: 400	26	N/F CARLE, SCOTT CARLE, THERESA PIN: 175779056 DB: 14863 PG: 2493
4	N/F JONES PROPERTIES LLC PIN: 1757856755 DB: 12895 PG: 505	27	N/F GRO PEG PROPERTIES LLC PIN: 175784907 DB/PG: 01835901707
5	N/F JONES, CHARLES SPENCER PIN: 1757857937 DB: 9320 PG: 1460	28	N/F CARLE, SCOTT CARLE, THERESA PIN: 175779056 DB: 14863 PG: 2493
6	N/F ANDERSON, BOBY G PIN: 1757889104 DB: 8776 PG: 573	29	N/F GRO PEG PROPERTIES LLC PIN: 175784907 DB: 18399 PG: 1707
7	N/F LANGWORTHY, ROBERT JOSEPH PIN: 175786835 DB: 16243 PG: 1275	30	N/F CARLE, SCOTT CARLE, THERESA PIN: 175779056 DB: 14863 PG: 2493
8	N/F GOLD, SHARIE PIN: 175786660 DB: PG:	31	N/F FOWLER, JAMES ROBERT PIN: 175771035 DB/PG: 8659 PG: 954
9	N/F LEFRANCOIS CONSTRUCTION CO INC PIN: 175786682 DB: 18469 PG: 2335	32	N/F UNDERHILL, GROVER ARCHIE JR PIN: 175786828 DB: 20-E PG: 1940
10	N/F LEFRANCOIS, MICHAEL L PIN: 1757876015 DB: 14359 PG: 1438	33	N/F UNDERHILL, GROVER ARCHIE JR PIN: 175786828 DB: 20-E PG: 1940
11	N/F BEATTIE, LENORA M PIN: 1757875349 DB: 07-E PG: 2834	34	N/F UNDERHILL, GROVER ARCHIE JR PIN: 175786828 DB: 20-E PG: 1940
12	N/F LEFRANCOIS, STEPHEN D PIN: 175787497 DB: 5638 PG: 497	35	N/F MT CALVARY HOLINESS CHURCH OF WAKE CO INC PIN: 1757860324 DB: 10124 PG: 2778

13	N/F HANCOCK, NICOLE LEFRANCOIS PIN: 1757874938 DB: 16532 PG: 675	36	N/F UNDERHILL, G ARCHIE JR PIN: 1757853765 DB: 6443 PG: 2129
14	N/F JONES PROPERTIES LLC PIN: 1757884137 DB: 11404 PG: 2275	37	N/F PREDDY, GENADIUS MAC PREDDY, MATTIE F PIN: 1757856588 DB: 1882 PG: 342
15	N/F JONES PROPERTIES LLC PIN: 1757884420 DB: 12589 PG: 1045	38	N/F CECIL L GOODNIGHT AND WIFE, JUDY J GOODNIGHT PIN: 1757850296 DB 5344 PG 819
16	N/F JONES, CHARLES SPENCE PIN: 1757884608 DB: 5319 PG: 135	39	N/F BETTY H PARTIN PIN: 1757854381 DB: 17435 PG: 1751 LOT 2 - BM 1985 PG 88
17	N/F JONES, CHARLES SPENCE PIN: 1757883961 DB: 5319 PG: 135	40	N/F UNITY THREE BUILDERS, INC. PIN: 1757868231 DB: 18226 PG: 2104
18	N/F JONES, CHARLES SPENCE PIN: 1757884101 DB: 2590 PG: 622	41	N/F UTILITY THREE BUILDERS INC PIN: 1757846703 DB: 18226 PG: 2104
19	N/F JONES, CHARLES SPENCE PIN: 1757863364 DB: 2478 PG: 210	42	N/F WILLIE RAY SUTTON AND WIFE, PAMELA Z SUTTON PIN: 1757857280 DB 2956 PG 536 BM 1981 PG 294
20	N/F RGA CONSULTING LLC PIN: 1757863617 DB: 15770 PG: 1169	43	N/F MITCHELL MILL ROAD INVESTORS PIN: 1757738451 DB: 11505 PG: 2324
21	N/F JONES PROPERTIES LLC PIN: 1758805145 DB: 11187 PG: 542	44	N/F HAMPTON, MELODY L PIN: 1757754163 DB: 4777 PG: 764
22	N/F DAVIS, WILLIAM G DAVIS, KAREN M PIN: 1758095979 DB: 3425 PG: 292	45	N/F MITCHELL MILL ROAD INVESTORS PIN: 1757738451 DB: 11505 PG: 2324
23	N/F FORRESTER, JENNIFER N FORRESTER, HAYES G PIN: 1758070713 DB: 12620 PG: 2172	46	N/F JONES, CHARLES SPENCER PIN: 1757944104 DB: 18822 PG: 904

NO.	REVISIONS	DATE	BY

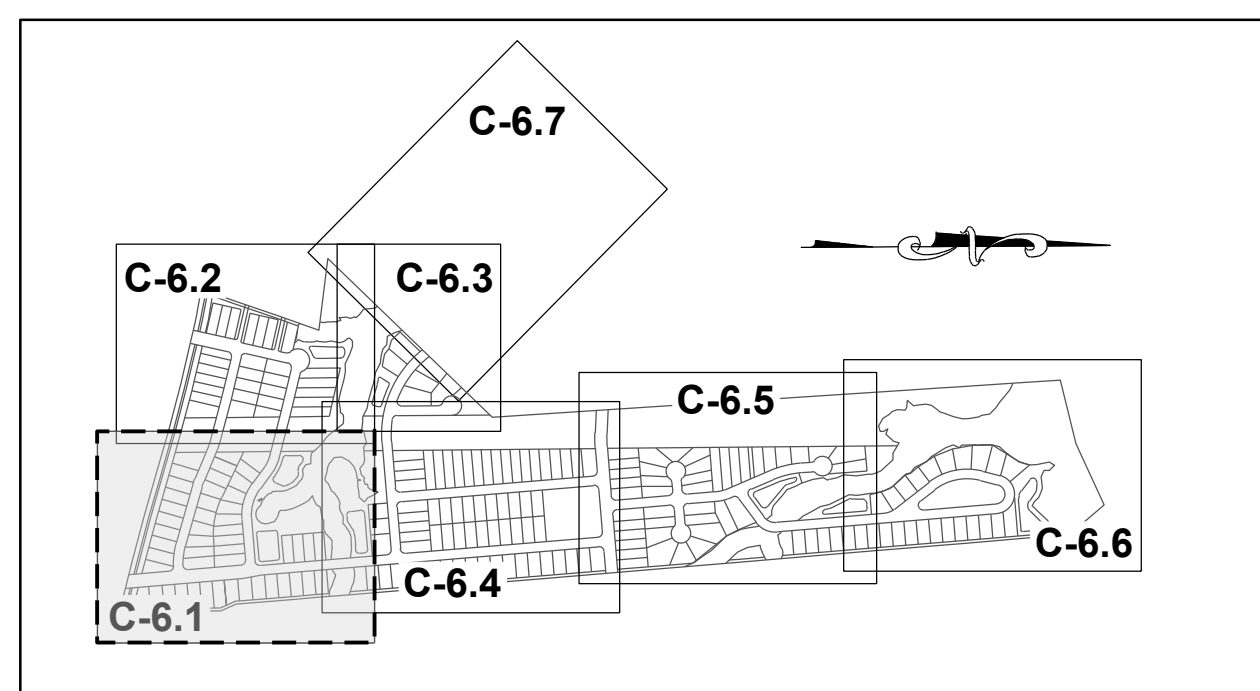
STRONGROCK

ENGINEERING GROUP

STRONG ROCK ENGINEERING GROUP, PLLC (COMPANY LICENSE # P-2166)
305 CHURCH AT NORTH HILLS STREET, SUITE 1110 RALEIGH, NC 27609 | INFORMATION@STRONGROCKGROUP.COM

STRONG ROCK PROJECT	NOT FOR CONSTRUCTION	SCALE AS SHOWN	DESIGNED BY JWL	DRAWN BY SRG	CHECKED BY JWL
<p style="margin: 0;">HILLS AT HARRIS CREEK TOWN OF ROLESVILLE, WAKE COUNTY, NORTH CAROLINA</p> <p style="margin: 0; font-weight: bold; font-size: large;">OVERALL UTILITY PLAN</p>					
<p style="margin: 0;">DRAWING SHEET</p> <p style="margin: 0; font-weight: bold; font-size: large;">C-6.0</p> <p style="margin: 0; font-weight: bold; font-size: large;">27 OF 50</p>					

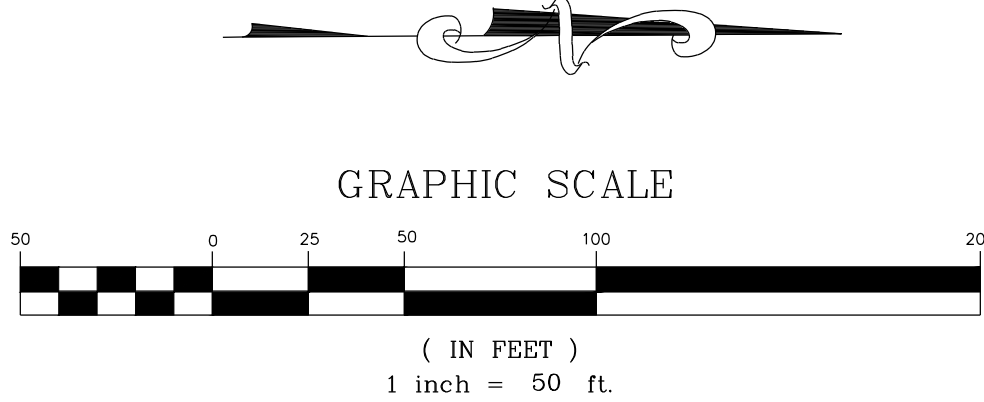
THIS PLANSET AND ANY ASSOCIATED DOCUMENTS ARE PRELIMINARY AND NOT AUTHORIZED FOR CONSTRUCTION UNTIL SIGNED, DATED, AND OFFICIALLY RELEASED FOR CONSTRUCTION BY THE ENGINEER OF RECORD.



SITE KEY PLAN

LEGEND:

SEE SHEET C-6.0 FOR LEGEND.



STREET 'B'

STREET 'C'

STREET 'A'

MITCHELL MILL ROAD - S.R. 2224
60' PUBLIC ROW (BM 1871 PG 445)

MANLY FARM RD

I realize this is preliminary but the design of this waterline should not be installed within the pavement of Mitchell Mill Rd.

SREG: The proposed waterline has been relocated outside of the edge of pavement on SR2224

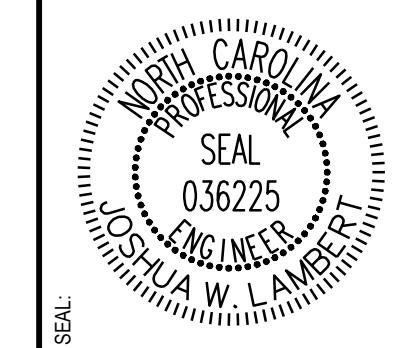
FH are required at every intersection.

"In all residential districts, mains shall be six inch and eight inch, six inch to be used only where it completes a good gridiron, but in no case in blocks of more than 600 feet in length. Maximum length of six-inch and eight-inch lines, without connection to a larger main are 1200 feet and 2000 feet, respectively. The maximum length of dead end six-inch and eight-inch lines are 600 feet and 1200 feet, respectively, except as provided for cul-de-sacs in #4 below." Considering this, you may actually need to extend a 12" waterline within this development.

SREG: The waterlines within this submittal have been updated to meet the provided criteria.



NO.	REVISIONS	DATE	BY



STRONGROCK
ENGINEERING GROUP

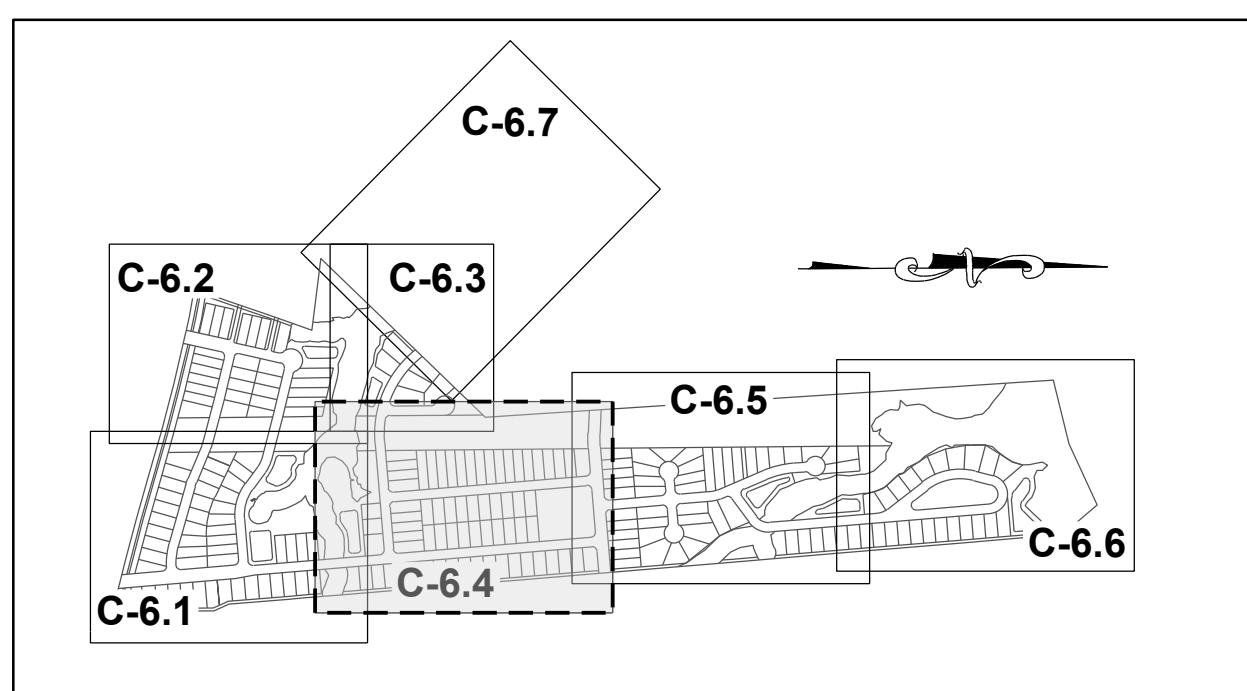
STRONG ROCK ENGINEERING GROUP, PLLC (COMPANY LICENSE # P-2166)
305 CHURCH AT NORTH HILLS STREET, SUITE 1110 RALEIGH, NC 27609 | INFORMATION@STRONGROCKGROUP.COM

STRONG ROCK PROJECT	NOT FOR CONSTRUCTION	SCALE AS SHOWN	JWL	SRG
DESIGNED BY	DRAWN BY	CHECKED BY	JWL	JWL

HILLS AT HARRIS CREEK
TOWN OF ROLESVILLE, WAKE COUNTY, NORTH CAROLINA

PARTIAL UTILITY PLAN I

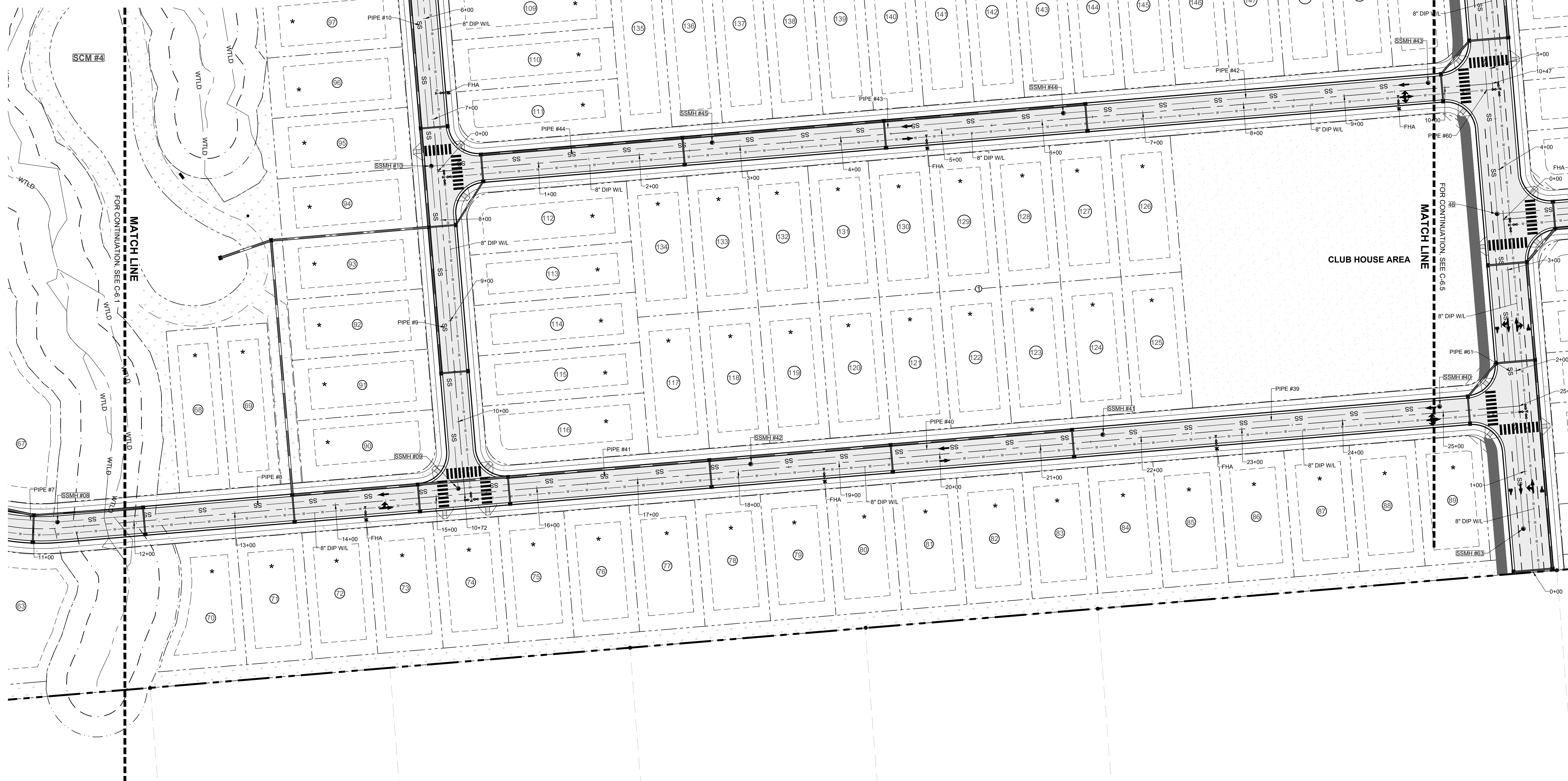
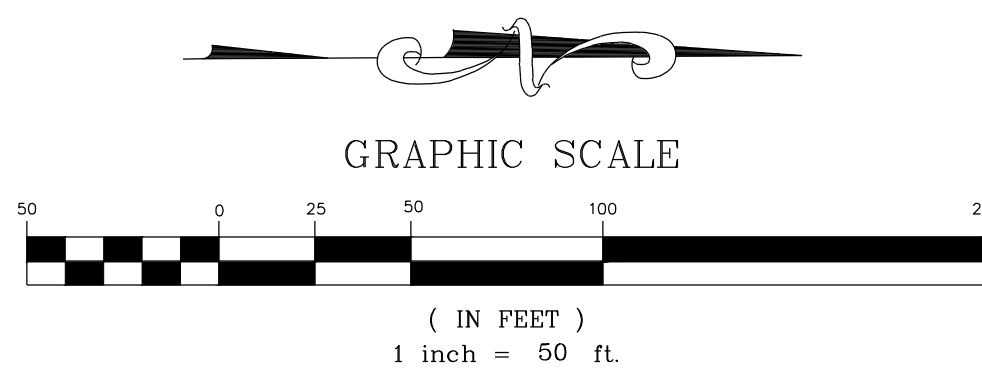
DRAWING SHEET
C-6.1



SITE KEY PLAN

LEGEND:

SEE SHEET C-6.0 FOR LEGEND.



NO.	REVISIONS	DATE	BY



STRONGROCK
ENGINEERING GROUP

STRONG ROCK ENGINEERING GROUP, PLLC COMPANY LICENSE # P-2166
305 CHURCH AT NORTH HILLS STREET, SUITE 1110 RALEIGH, NC 27609 | INFORMATION@STRONGROCKGROUP.COM

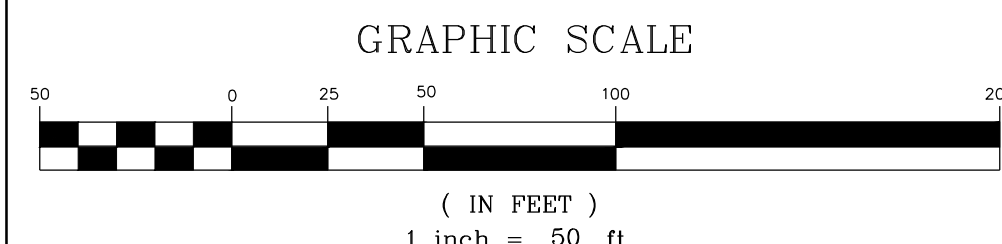
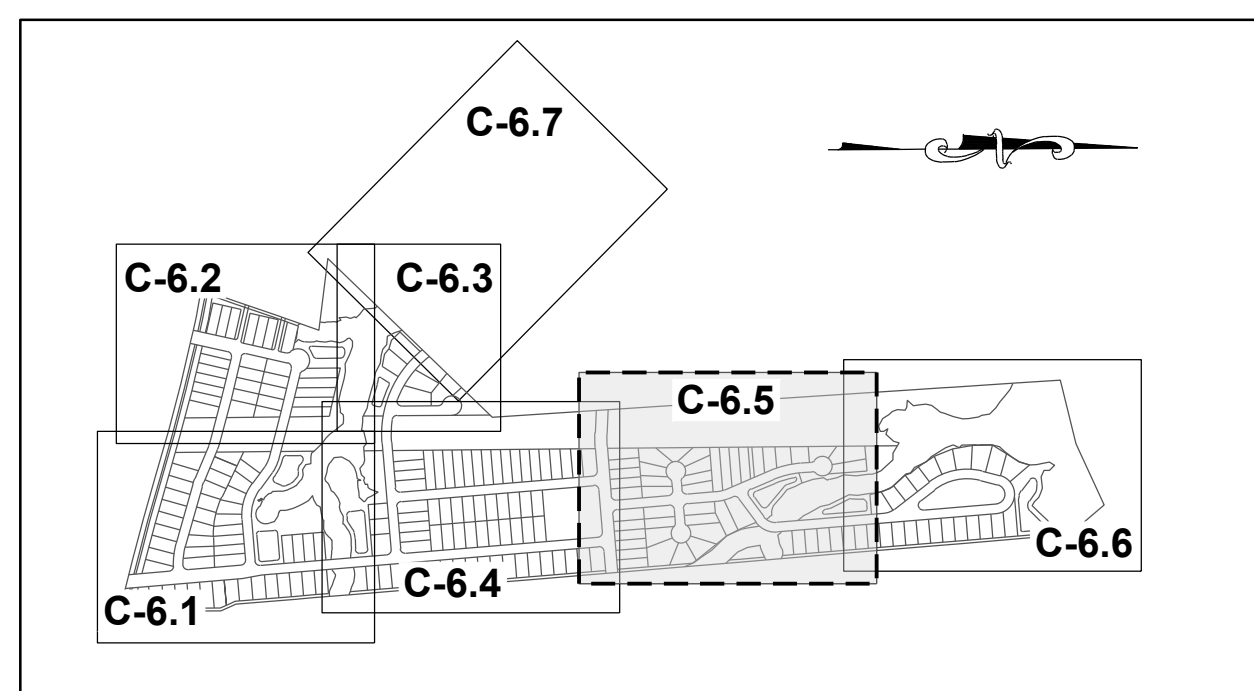
STRONG ROCK PROJECT	NOT FOR CONSTRUCTION	SCALE AS SHOWN	DESIGNED BY JWL	DRAWN BY SRG	CHECKED BY JWL
---------------------	----------------------	----------------	-----------------	--------------	----------------

HILLS AT HARRIS CREEK
TOWN OF ROLESVILLE, WAKE COUNTY, NORTH CAROLINA

PARTIAL UTILITY PLAN IV

DRAWING SHEET
C-6.4

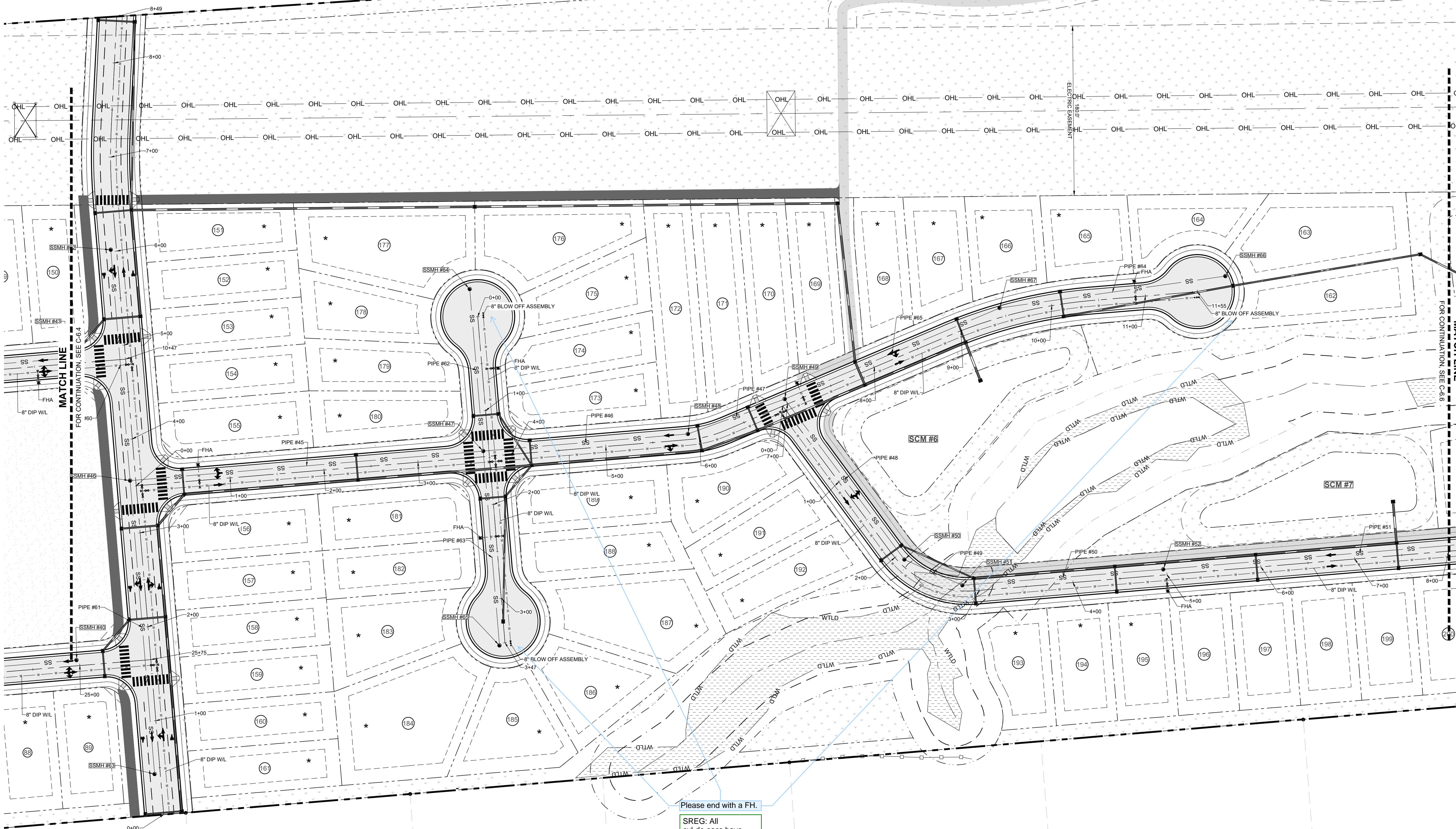
THIS PLANSET AND ANY ASSOCIATED DOCUMENTS ARE PRELIMINARY AND NOT AUTHORIZED FOR CONSTRUCTION UNTIL SIGNED, DATED, AND OFFICIALLY RELEASED FOR CONSTRUCTION BY THE ENGINEER OF RECORD.



SITE KEY PLAN

LEGEND:

SEE SHEET C-6.0 FOR LEGEND.



Please end with a FH.

SREG: All cul-de-sacs have been updated to end with a fire hydrant assembly.

NO.	REVISIONS	DATE	BY



STRONGROCK
ENGINEERING GROUP

STRONG ROCK ENGINEERING GROUP, PLLC COMPANY LICENSE # P-2166
305 CHURCH AT NORTH HILLS STREET, SUITE 1110 RALEIGH, NC 27609 | INFORMATION@STRONGROCKGROUP.COM

STRONG ROCK PROJECT	NOT FOR CONSTRUCTION	SCALE AS SHOWN	DESIGNED BY JWL	DRAWN BY SRG	CHECKED BY JWL
---------------------	----------------------	----------------	-----------------	--------------	----------------

HILLS AT HARRIS CREEK
TOWN OF ROLESVILLE, WAKE COUNTY, NORTH CAROLINA

PARTIAL UTILITY PLAN V

DRAWING SHEET
C-6.5

THIS PLANSET AND ANY ASSOCIATED DOCUMENTS ARE PRELIMINARY AND NOT AUTHORIZED FOR CONSTRUCTION UNTIL SIGNED, DATED, AND OFFICIALLY RELEASED FOR CONSTRUCTION BY THE ENGINEER OF RECORD.

