

B/17/99

LEGEND

	WILDFIRE BLACK TUPELO (TUP)		WILLOW OAK (QPH)
	RED MAPLE (ARU)		WHITE OAK (QAL)
	RED OAK (QRU)		
	VEHICULAR COBRA HEAD STREET LIGHT 30' MOUNTING HEIGHT SEE NOTE 1. (WAKE ELECTRIC SERVICE AREA).		
	ACORN STREET LIGHT 15' MOUNTING HEIGHT SEE NOTE 1. (WAKE ELECTRIC SERVICE AREA).		

L-12 TREE LIST

ARU	RED MAPLE
JAM	JANE MAGNOLIA
QAL	WHITE OAK
QPH	WILLOW OAK
QRU	RED OAK
TUP	WILDFIRE BLACK TUPELO

NOTES:

- REFER TO LIGHTING PLANS PROVIDED BY WAKE ELECTRIC AND DUKE ENERGY FOR FIXTURE LOCATIONS, CONDUIT, WIRING, ETC. WAKE ELECTRIC AND DUKE ENERGY EACH DEVELOPED SPECIFIC LIGHTING PLANS FOR THEIR SERVICE AREAS. LIGHTING PLANS WILL ENTAIL SPECIFIC POLE LOCATIONS, CONNECTIVITY TO POWER SOURCE, TRENCHING DETAILS, CONDUIT IF NEEDED (TYPICALLY FOR ROAD CROSSINGS), AND WIRING DETAILS. LIGHTING (COBRA HEAD AND ACORN) LOCATIONS SHOWN IN LANDSCAPING PLANS ARE FROM THE PHOTOMETRIC PLAN AND LIGHTING PLANS FROM THE ENERGY PROVIDERS.
- BURLINGTON MILLS RD. POSTED SPEED LIMIT IS 35 MPH.
- TOTAL PLANT LIST AND QTYS. ARE PROVIDED ON SHEET L-13.

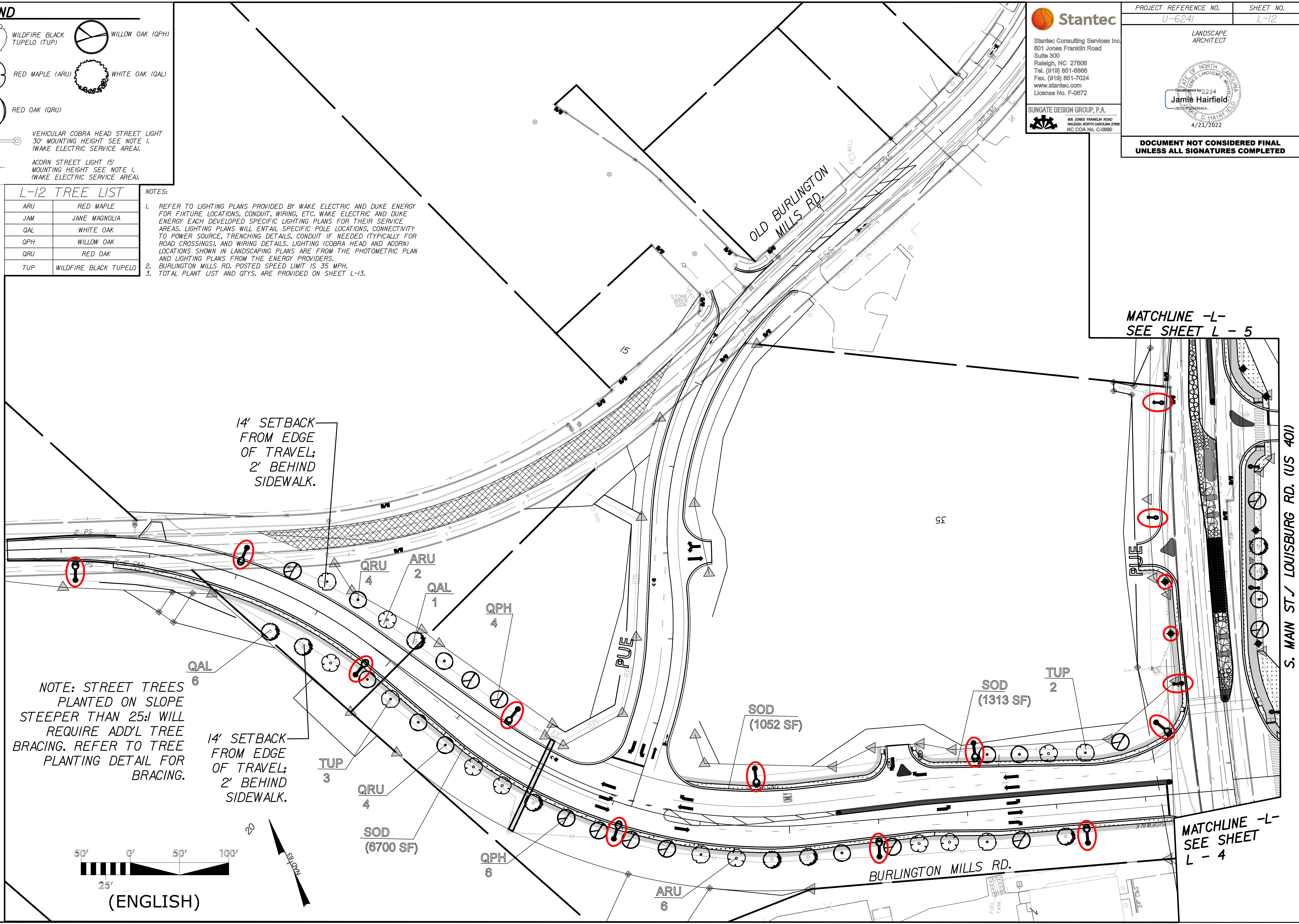
Stantec

Stantec Consulting Services Inc.
801 Jones Franklin Road
Suite 300
Raleigh, NC 27606
Tel. (919) 851-8888
Fax. (919) 851-7024
www.stantec.com
License No. F-0672

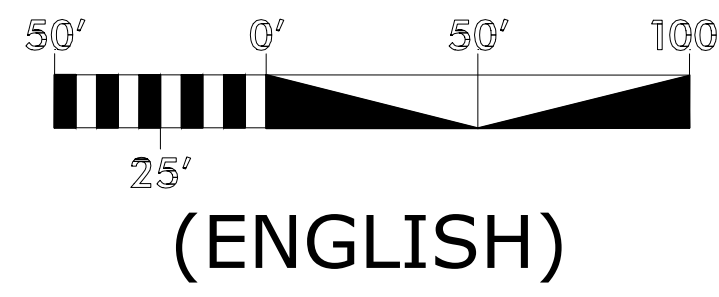
SUNGATE DESIGN GROUP, P.A.
801 JONES FRANKLIN ROAD
RALEIGH, NORTH CAROLINA 27606
NC COA No. C-0890

PROJECT REFERENCE NO. U-6241	SHEET NO. L-12
LANDSCAPE ARCHITECT	
 Discussed by 2234 Jamie Hairfield 4/21/2022	

**DOCUMENT NOT CONSIDERED FINAL
UNLESS ALL SIGNATURES COMPLETED**



NOTE: STREET TREES PLANTED ON SLOPE STEEPER THAN 25:1 WILL REQUIRE ADD'L TREE BRACING. REFER TO TREE PLANTING DETAIL FOR BRACING.



7/5/2021 C:\projects\Rolesville Backup\U-6241_Rdy_dsn_Land_ABI.dwg aboutin

S. MAIN ST./ LOUISBURG RD. (US 401)