

REV#	DATE	REVISION	BY
Rev A	02/08/22	LED Roadway - Gray	NJ

Customer approval \_\_\_\_\_  
Date \_\_\_\_\_

DISTANCE CALIBRATION (INCHES)

**LIGHTING DESIGN TOLERANCE**  
The calculated footcandle light levels in this lighting design are predicted values and are based on specific information that has been supplied to Duke Energy. Any inaccuracies in the supplied information, differences in luminaire installation, lighted area geometry including elevation differences, reflective properties of surrounding surfaces, obstructions (foliage or otherwise) in the lighted area, or lighting from sources other than listed in this design may produce different results from the predicted values. Normal tolerances of voltage, lamp output, and ballast and luminaire manufacture will also affect results.



**PROPRIETARY & CONFIDENTIAL**  
This document together with the concepts and designs presented herein, presented as an instrument of service, is the sole property of Duke Energy, and is intended only for the specific purpose and prospective client as stated in the title block of this drawing. Any use, copying, reproduction or disclosure of the drawing, design or any information contained herein by the prospective customer or other entities, including without limitation, architects, engineers, or equipment manufacturers is hereby expressly prohibited and shall not be permitted absent prior written consent from, and payment of compensation to Duke Energy. Duke Energy disclaims any liability or responsibility for any unauthorized use of or reliance on this document.

**THE POINT**  
Rolesville, NC  
SITE LIGHTING PLAN

Designed by DEP LIGHTING SOLUTIONS  
Reviewed by N. Johnson Scale 1" = 100'  
Date 02/08/2022 Size "Arch D"  
Description LED 50w & 150w Roadway  
Drawing No. 22-0042A Sht. 1 OF 3



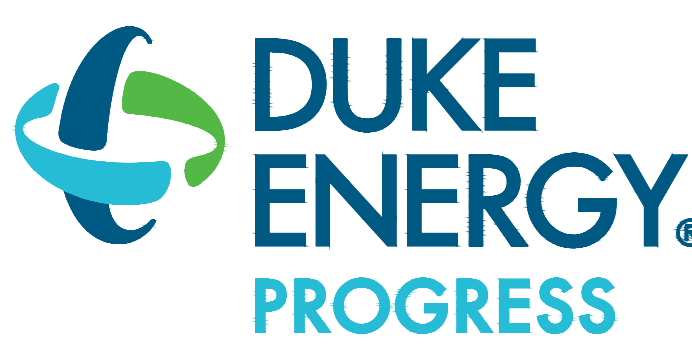


Rev A	02/08/22	LED Roadway - Gray	NJ
REV#	DATE	REVISION	BY

Customer approval \_\_\_\_\_  
Date \_\_\_\_\_

DISTANCE CALIBRATION (INCHES)

**LIGHTING DESIGN TOLERANCE**  
The calculated footcandle light levels in this lighting design are predicted values and are based on specific information that has been supplied to Duke Energy. Any inaccuracies in the supplied information, differences in luminaire installation, lighted area geometry including elevation differences, reflective properties of surrounding surfaces, obstructions (foliage or otherwise) in the lighted area, or lighting from sources other than listed in this design may produce different results from the predicted values. Normal tolerances of voltage, lamp output, and ballast and luminaire manufacture will also affect results.



**PROPRIETARY & CONFIDENTIAL**  
This document together with the concepts and designs presented herein, presented as an instrument of service, is the sole property of Duke Energy, and is intended only for the specific purpose and prospective client as stated in the title block of this drawing. Any use, copying, reproduction or disclosure of the drawing, design or any information contained herein by the prospective customer or other entities, including without limitation, architects, engineers, or equipment manufacturers is hereby expressly prohibited and shall not be permitted absent prior written consent from, and payment of compensation to Duke Energy. Duke Energy disclaims any liability or responsibility for any unauthorized use of or reliance on this document.

<b>THE POINT</b>	
Rolesville, NC	
SITE LIGHTING PLAN	
Designed by	DEP LIGHTING SOLUTIONS
Reviewed by	N. Johnson Scale 1" = 100'
Date	02/08/2022 Size "Arch D"
Description	LED 50w & 150w Roadway
Drawing No.	22-0042A Sht. 2 OF 3





Outdoor Lighting  
Roadway LED



The Roadway LED is a green solution and great fit for streets, roads, long, narrow areas and parking lots. This energy-efficient luminaire delivers the light where it is needed while increasing visibility and reducing spill light to adjoining properties. Choose low to medium light output on wood or fiberglass poles (or mount on an existing pole). Available with one to four fixtures per pole, depending on the fixture/pole combination selected.

LED (Light Emitting Diode)	50   75   105   150   215   280 watts
Mounting heights	25', 30', 35'
Color	Gray, Black
Poles	Fiberglass Metal (special conditions) Wood

For additional information, visit us at [duke-energy.com/OutdoorLighting](http://duke-energy.com/OutdoorLighting) or call us toll free at 866.769.6417.



Outdoor Lighting  
Roadway LED



Light source: LED (white)  
Lumens: 4,807 - 25,050 (fixture dependent)

Wattage	Light Pattern	IESNA Backlight-Uplight - Glare (BUG) Rating
LED 50	IESNA Type III (medium oval)	B1-UO-G1
LED 75	IESNA Type II (long oval)	B1-UO-G2
LED 105	IESNA Type II (long oval)	B2-UO-G3
LED 150	IESNA Type III (medium oval)	B2-UO-G2
LED 215	IESNA Type III (medium oval)	B3-UO-G3
LED 280	IESNA Type III (medium oval)	B3-UO-G4

Color temperature: 4,000K  
Warm-up and restrike time: Instant on (no warm-up or restrike time)

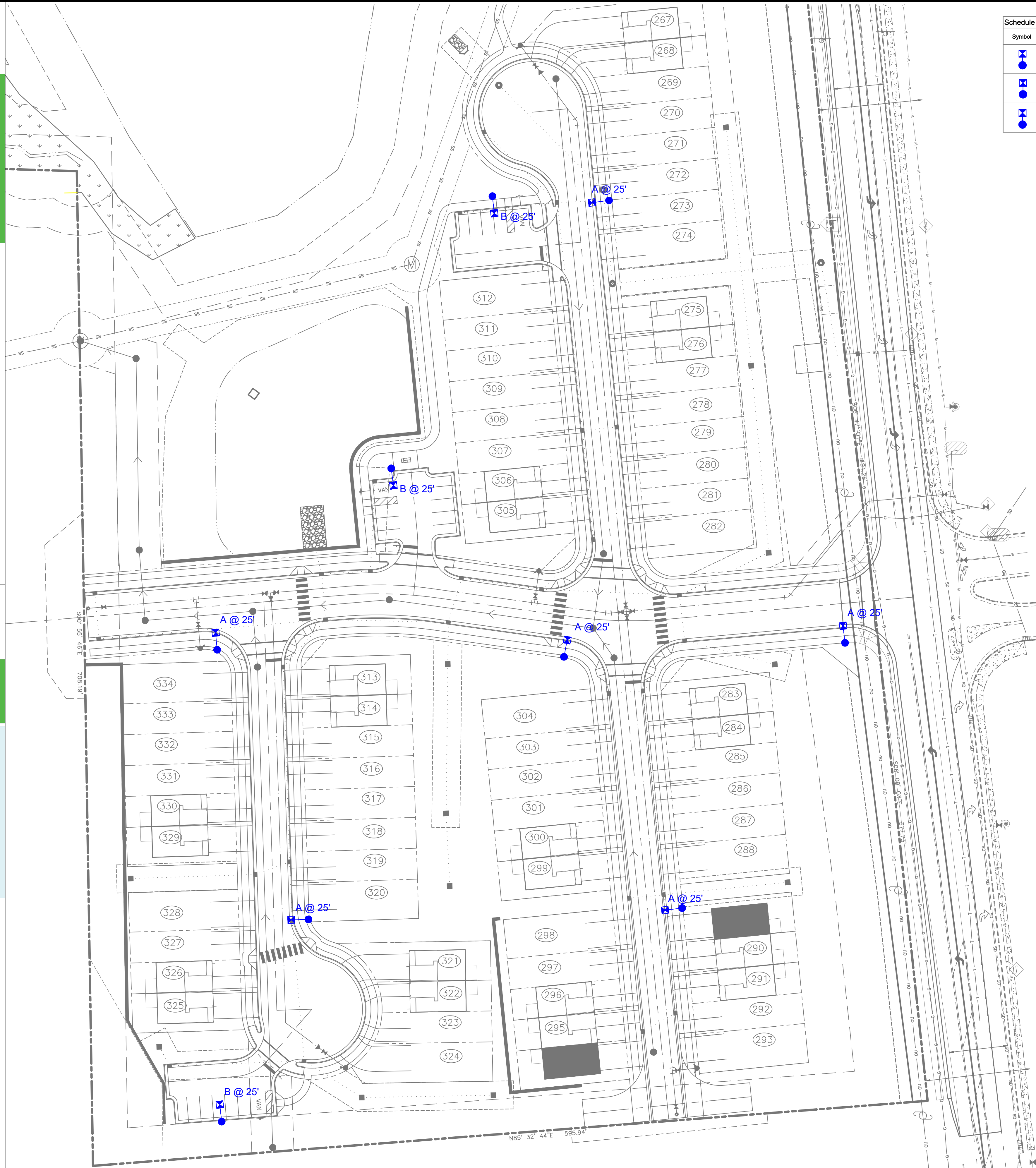
Poles available:

Name	Mounting height	Color
Fiberglass	25', 30', 35'	Gray
Fiberglass	25', 30', 35'	Black (additional cost)
Wood	25', 30', 35'	Standard
Metal (special conditions)*	25', 30', 35'	Gray

Features

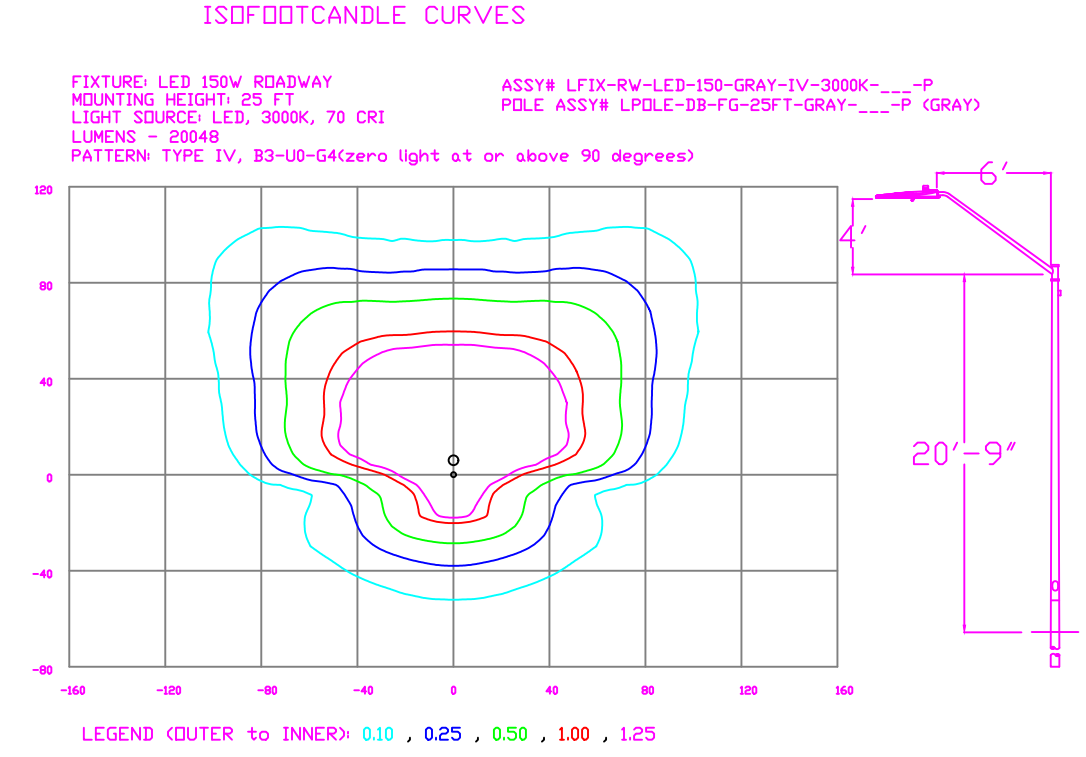
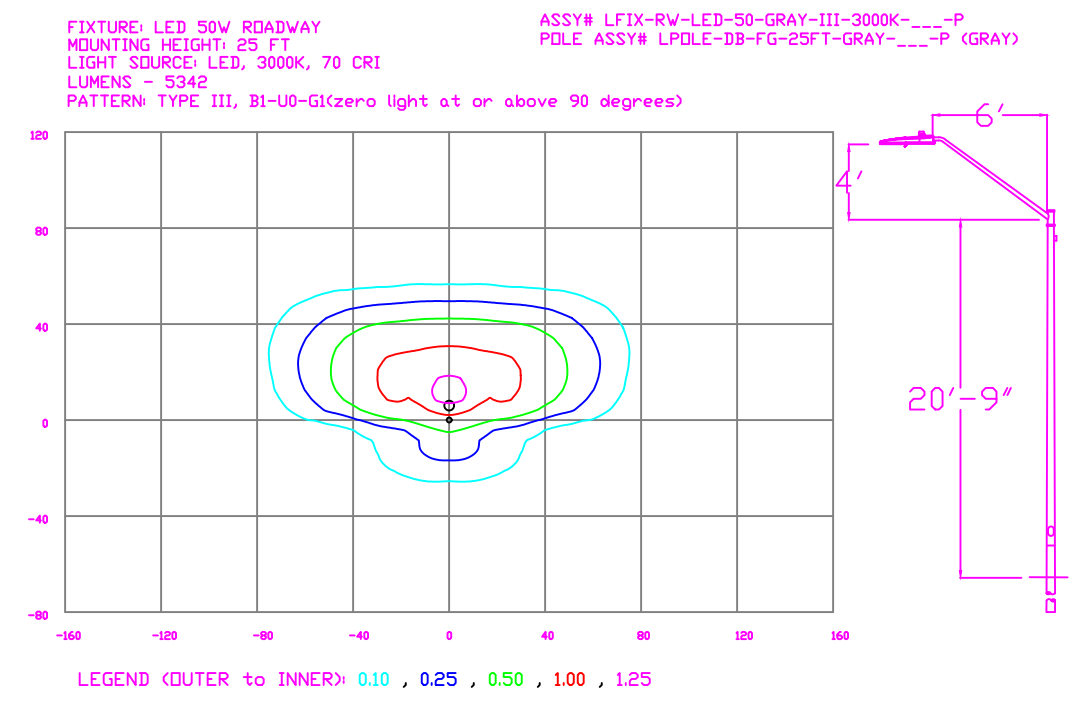
Features	Benefits
Little or no installation cost	Frees up capital for other projects
Design services by lighting professionals included	Meets industry standards and lighting ordinances
Maintenance included	Eliminates high and unexpected repair bills
Electricity included	Less expensive than metered service
Warranty included	Worry-free
One low monthly cost on your electric bill	Convenience and savings for you
Turnkey operation	Provides hassle-free installation and service
Backed by over 40 years of experience	A name you can trust today ... and tomorrow

\*2" raised foundation available when required.



Symbol	Label	Quantity	Description	Number Lamps	Lumens Per Lamp	Light Loss Factor
⊠	A	115	LED 50w Roadway - Type III - 3000K - Public	1	5312	0.85
●	B	11	LED 50w Roadway - Type III - 3000K - Private	1	5312	0.85
⊠	C	2	LED 150w Roadway - Type IV - 3000K - Private	1	20049	0.85

ISOFOTCANDLE CURVES



LIGHTING DESIGN TOLERANCE

The calculated footcandle light levels in this lighting design are predicted values and are based on specific information that has been supplied to Duke Energy. Any inaccuracies in the supplied information, differences in luminaire installation, lighted area geometry including elevation differences, reflective properties of surrounding surfaces, obstructions (foliage or otherwise) in the lighted area, or lighting from sources other than listed in this design may produce different results from the predicted values. Normal tolerances of voltage, lamp output, and ballast and luminaire manufacture will also affect results.



PROPRIETARY & CONFIDENTIAL

This document together with the concepts and designs presented herein, presented as an instrument of service, is the sole property of Duke Energy, and is intended only for the specific purpose and prospective client as stated in the title block of this drawing. Any use, copying, reproduction or disclosure of the drawing, design or any information contained herein by the prospective customer or other entities, including without limitation, architects, engineers, or equipment manufacturers is hereby expressly prohibited and shall not be permitted absent prior written consent from, and payment of compensation to Duke Energy. Duke Energy disclaims any liability or responsibility for any unauthorized use of or reliance on this document.

THE POINT

Rolesville, NC

SITE LIGHTING PLAN

Designed by	DEP LIGHTING SOLUTIONS
Reviewed by	N. Johnson Scale 1" = 40'
Date	02/08/2022 Size Arch D
Description	LED 50w & 150w Roadway
Drawing No.	22-0042A Sht. 3 OF 3

Customer approval \_\_\_\_\_  
Date \_\_\_\_\_



REV#	DATE	REVISION	BY
Rev A	02/08/22	LED Roadway - Gray	NJ