

Symbol	Label	Quantity	Description	Lumens Per Lamp	Light Loss Factor
	A	49	LED 50w Roadway - Type III - 3000K - Street	5312	0.85
	B	5	LED 50w Roadway - Type III - 3000K - Parking	5312	0.85

Outdoor Lighting



MICRO LED ROADWAY
Black, Dark Sky Compliant

LED (Light emitting diode) 50 watts
Mounting height 20', 25', 30'
Color Gray / Black
Pole Fiberglass / Metal / Wood
Applications Neighborhoods / Parks / Streets

Light source: LED (Aria)
Wattage: 50 watts, 70 watts
Lumens: 5,312 - 8,170
Light pattern:IESNA Type II, III, V
IESNA cutoff classification: Full cutoff
BUG rating: Type III = IES002 (50w) / IES002 (70w)
 Type III = IES003
 Type V = IES001 (50w only)

Color temperature: 3,000K

POLE AVAILABLE	MOUNTING HEIGHT	COLOR
Fiberglass	25', 30', 35'	Gray, Black (additional cost)
Wood	25', 30', 35'	Stained
Metal (Special conditions)	25', 30', 35'	Galvanized

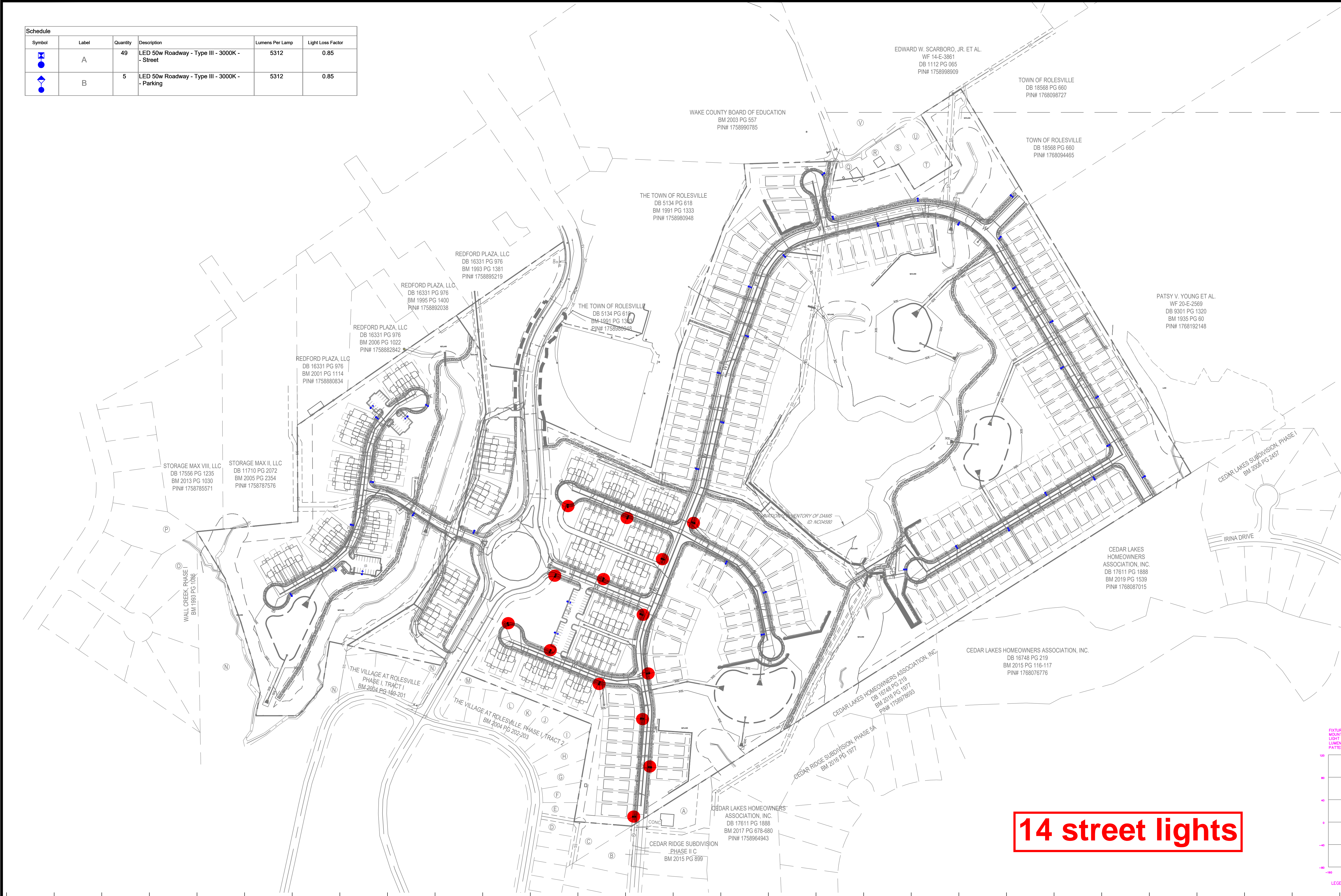
FEATURES:
 Turnkey operation
 Little or no installation cost
 Design services by lighting professionals included
 Maintenance, electricity & warranty included
 One low monthly cost on your electric bill

BENEFITS:
 Provides hassle-free installation and service
 Frees up capital for other projects
 Meets industry standards and lighting ordinances
 Eliminates high and unexpected repair bills
 Convenience and savings for you

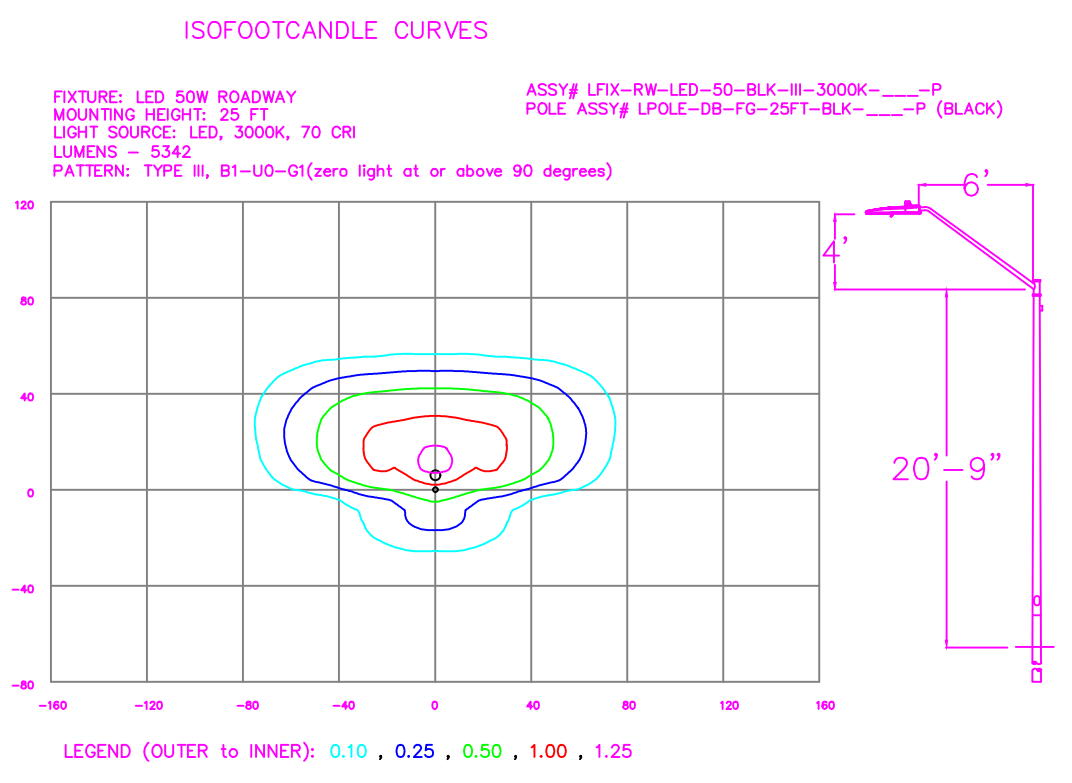
For additional information, contact us at 1-800-CustomerEnergy.com.

DUKE ENERGY
PROGRESS

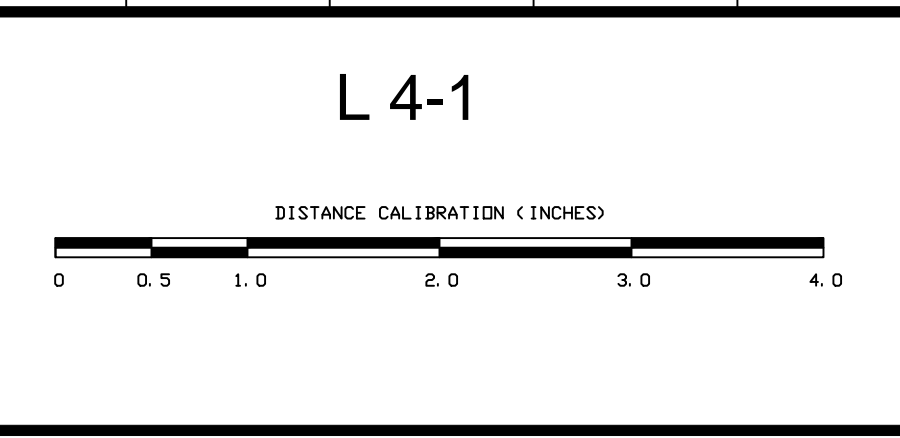
©2022 Duke Energy Progress. 02224-1047-103



14 street lights

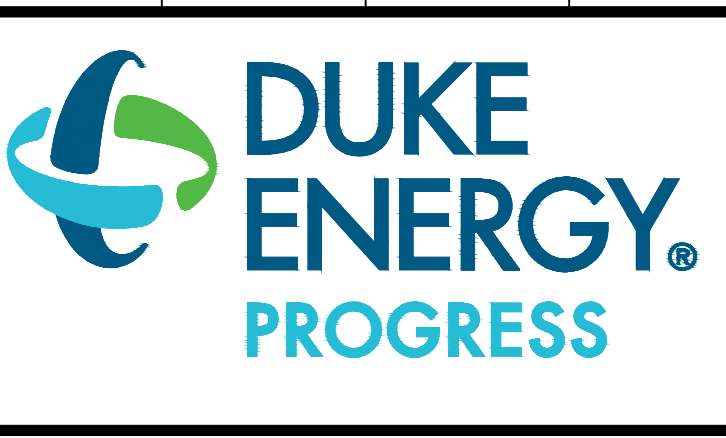


NO.	DATE	REVISION	BY



LIGHTING DESIGN TOLERANCE

The calculated footcandle light levels in this lighting design are predicted values and are based on specific information that has been supplied to Duke Energy. Any inaccuracies in the supplied information, differences in luminaire installation, lighted area geometry including elevation differences, reflective properties of surrounding surfaces, obstructions (foliage or otherwise) in the lighted area, or lighting from sources other than listed in this design may produce different results from the predicted values. Normal tolerances of voltage, lamp output, and ballast and luminaire manufacture will also affect results.



PROPRIETARY & CONFIDENTIAL

This document together with the concepts and designs presented herein, presented as an instrument of service, is the sole property of Duke Energy, and is intended only for the specific purpose and prospective client as stated in the title block of this drawing. Any use, copying, reproduction or disclosure of the drawing, design or any information contained herein by the prospective customer or other entities, including without limitation, architects, engineers, or equipment manufacturers is hereby expressly prohibited and shall not be permitted absent prior written consent from, and payment of compensation to Duke Energy. Duke Energy disclaims any liability or responsibility for any unauthorized use of or reliance on this document.

PARKER RIDGE	
Rolesville, NC	
SITE LIGHTING ARRANGEMENT	
Designed by	DUKE ENERGY PROGRESS LIGHTING SOLUTIONS
Reviewed by	N. Johnson
Date	07/18/2023
Description	LED Roadway
Drawing No.	23-0308A
Sht.	1 OF 1