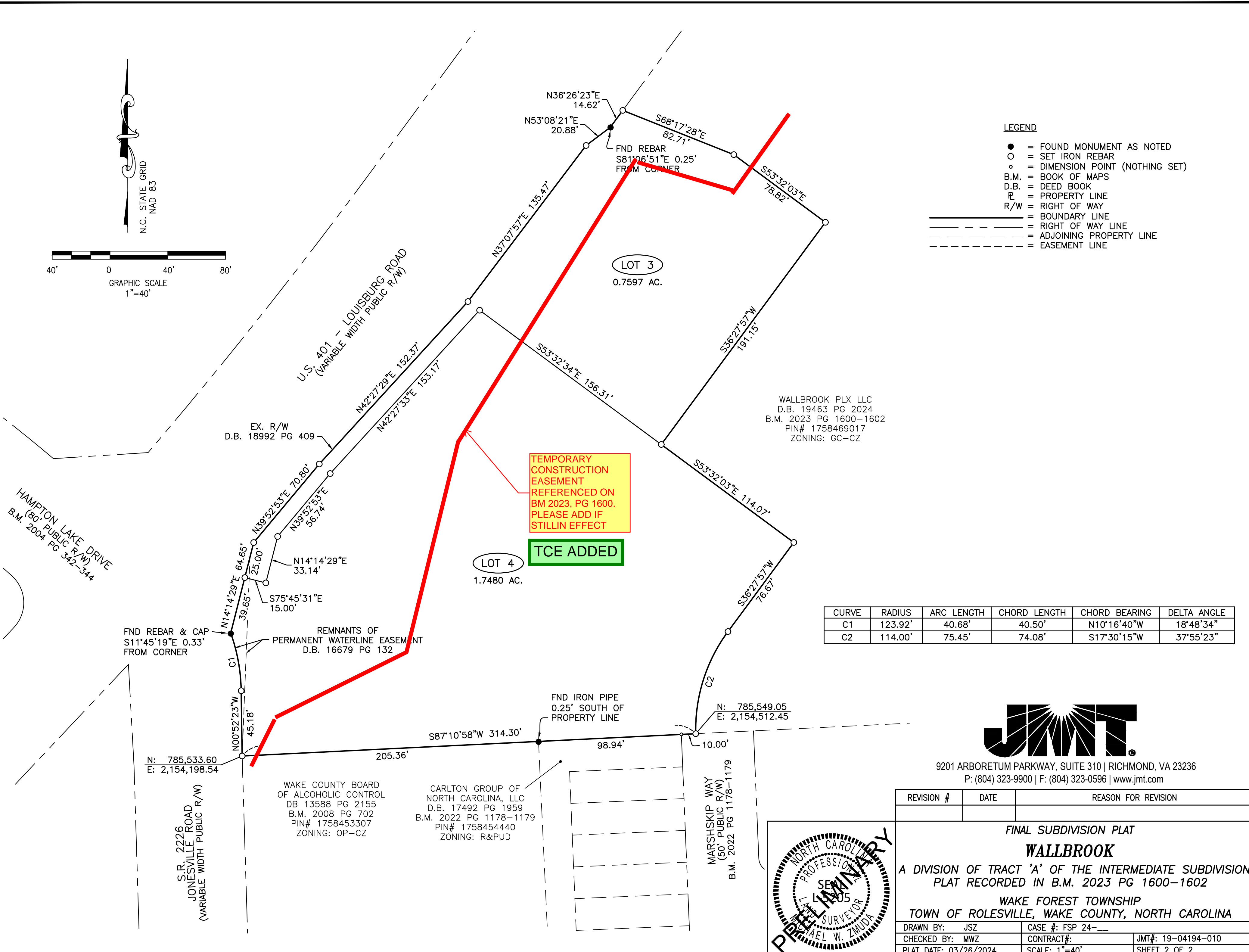


- LEGEND**
- = FOUND MONUMENT AS NOTED
 - = SET IRON REBAR
 - = DIMENSION POINT (NOTHING SET)
 - B.M. = BOOK OF MAPS
 - D.B. = DEED BOOK
 - ℙ = PROPERTY LINE
 - R/W = RIGHT OF WAY
 - = BOUNDARY LINE
 - = RIGHT OF WAY LINE
 - = ADJOINING PROPERTY LINE
 - = EASEMENT LINE

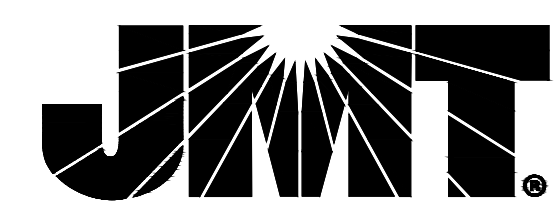


WALLBROOK PLX LLC
 D.B. 19463 PG 2024
 B.M. 2023 PG 1600-1602
 PIN# 1758469017
 ZONING: GC-CZ

CURVE	RADIUS	ARC LENGTH	CHORD LENGTH	CHORD BEARING	DELTA ANGLE
C1	123.92'	40.68'	40.50'	N10°16'40"W	18°48'34"
C2	114.00'	75.45'	74.08'	S17°30'15"W	37°55'23"

WAKE COUNTY BOARD OF ALCOHOLIC CONTROL
 DB 13588 PG 2155
 B.M. 2008 PG 702
 PIN# 1758453307
 ZONING: OP-CZ

CARLTON GROUP OF NORTH CAROLINA, LLC
 D.B. 17492 PG 1959
 B.M. 2022 PG 1178-1179
 PIN# 1758454440
 ZONING: R&PUD



9201 ARBORETUM PARKWAY, SUITE 310 | RICHMOND, VA 23236
 P: (804) 323-9900 | F: (804) 323-0596 | www.jmt.com

REVISION #	DATE	REASON FOR REVISION
FINAL SUBDIVISION PLAT WALLBROOK A DIVISION OF TRACT 'A' OF THE INTERMEDIATE SUBDIVISION PLAT RECORDED IN B.M. 2023 PG 1600-1602 WAKE FOREST TOWNSHIP TOWN OF ROLESVILLE, WAKE COUNTY, NORTH CAROLINA		
DRAWN BY: JSZ	CASE #: FSP 24--	
CHECKED BY: MWZ	CONTRACT#:	JMT#: 19-04194-010
PLAT DATE: 03/26/2024	SCALE: 1"=40'	SHEET 2 OF 2

