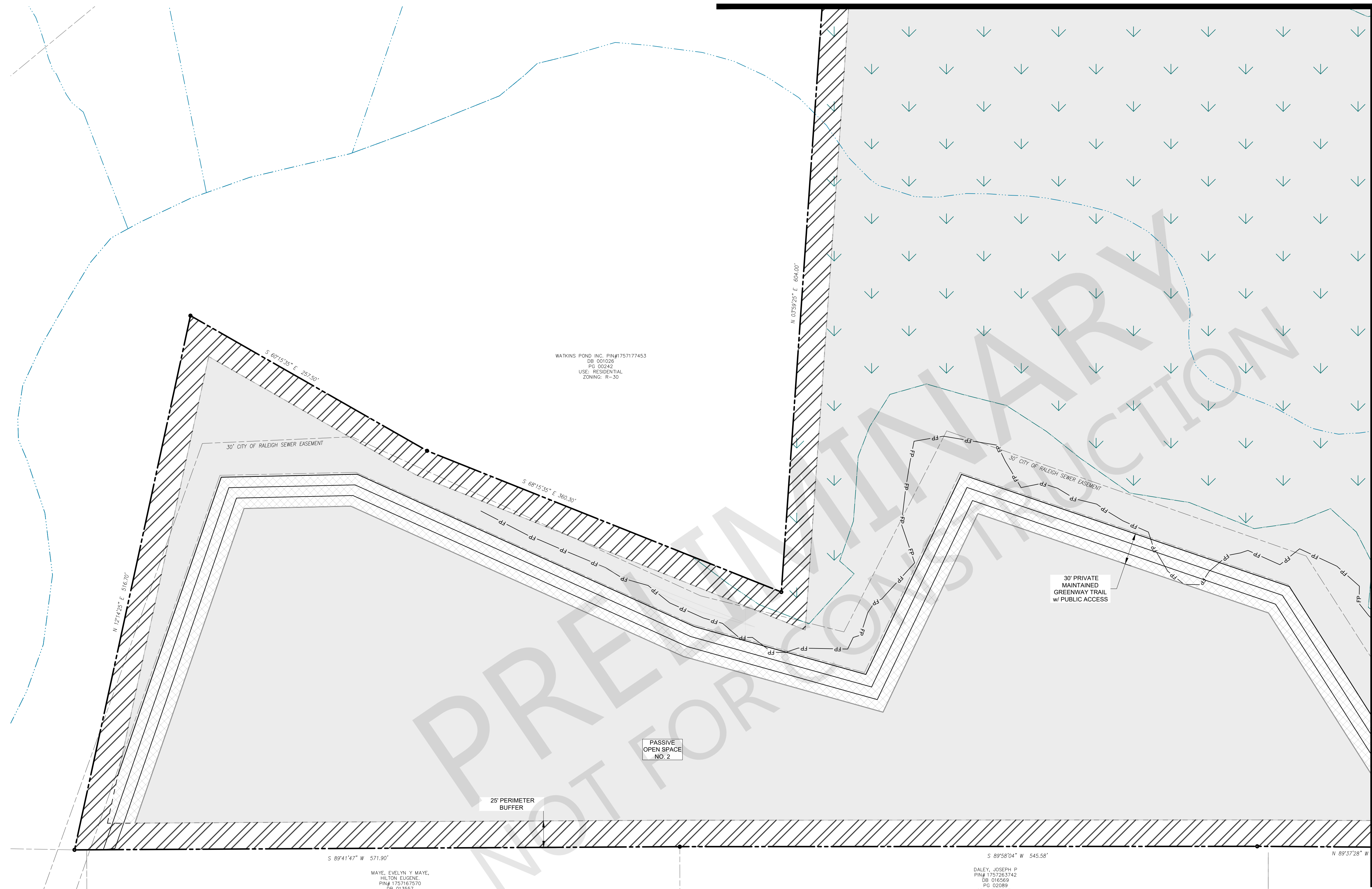


MATCHLINE SEE SHEET 4



MATCHLINE SEE SHEET 7

WATKINS POND, INC. PIN#175717453
 DB 001026
 PG 00242
 USE: RESIDENTIAL
 ZONING: R-30

PASSIVE
 OPEN SPACE
 NO. 2

30' PRIVATE
 MAINTAINED
 GREENWAY TRAIL
 w/ PUBLIC ACCESS

25' PERIMETER
 BUFFER

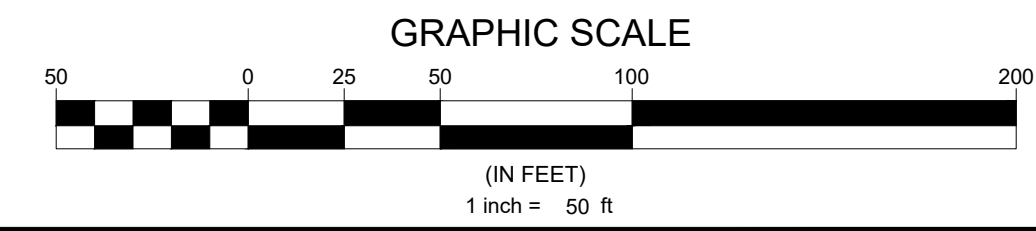
WATKINS POND, INC.
 PIN#175706456
 DB 001000
 PG 00001

MAYE, EVELYN Y MAYE,
 HILTON EUGENE
 PIN# 1757167570
 DB 013557
 PG 02124
 USE: RESIDENTIAL
 ZONING: R-30

DALEY, JOSEPH P
 PIN# 1757265742
 DB 016569
 PG 02099
 USE: RESIDENTIAL
 ZONING: R-30

SITE PLAN LEGEND

PROPOSED R.O.W.	
PROPOSED LOT LINE	
PROPOSED LOT SETBACK	
PROPOSED EASEMENT	
PROPOSED OPEN SPACE	
PROPOSED OPEN SPACE ACTIVE	
PROPOSED OPEN SPACE ACTIVE GREENWAY	
PROPOSED 25' BOUNDARY BUFFER CONSERVATION	



N.C. UNDERGROUND UTILITIES

 3 DAYS BEFORE DIGGING CALL
 TOLL FREE 811 or (800)632-4949
 A ONE CALL SYSTEM FOR COMMUNITY AND JOB SAFETY

Developer
THE CSC GROUP
 CONTRIBUTOR TO THE SUCCESS OF LOCAL COMMUNITY
 10030 Green Level Church Rd, Suite 802 #149, Cary, NC 27519

Engineer

QUANTECH ENGINEERING
 INNOVATIVE SOLUTIONS | ENGINEERING THE FUTURE
 Firm # F-1517
 15000 Weston Parkway
 Cary, N.C. 27513
 (919) 996-9455

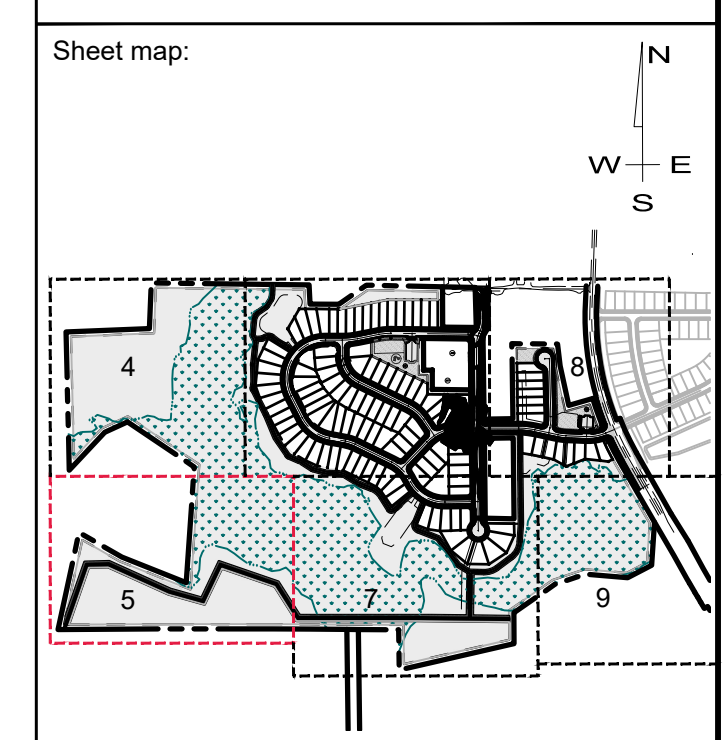
Surveyor

BCSO Bateman Civil Survey Company
 2524 Reliance Avenue
 Apex, NC 27539
 919-557-1060 ext 109
www.batemancivilsurvey.com

Jurisdiction / Municipality

Rolesville
 Complete Communities. Digital Connections.
 Town of Rolesville
 502 Southtown Cir
 Rolesville, NC 27571
 Phone: 919-554-6517
PSP-24-XX

Other Consultants



Seal:

FINAL DRAWING - FOR REVIEW PURPOSES ONLY

Issued / Print Date: 2024-July-30 (09:00)
 File Name: C1.00 Plan Sheets.dwg
 Last Saved by: Tim Newsome
 Drawn by: JAC

Project:
HARRIS CREEK FARMS
 D2300222

Issued for: **PRELIMINARY PLANS DO NOT USE FOR CONSTRUCTION**

REVISIONS

No.	Date	Description

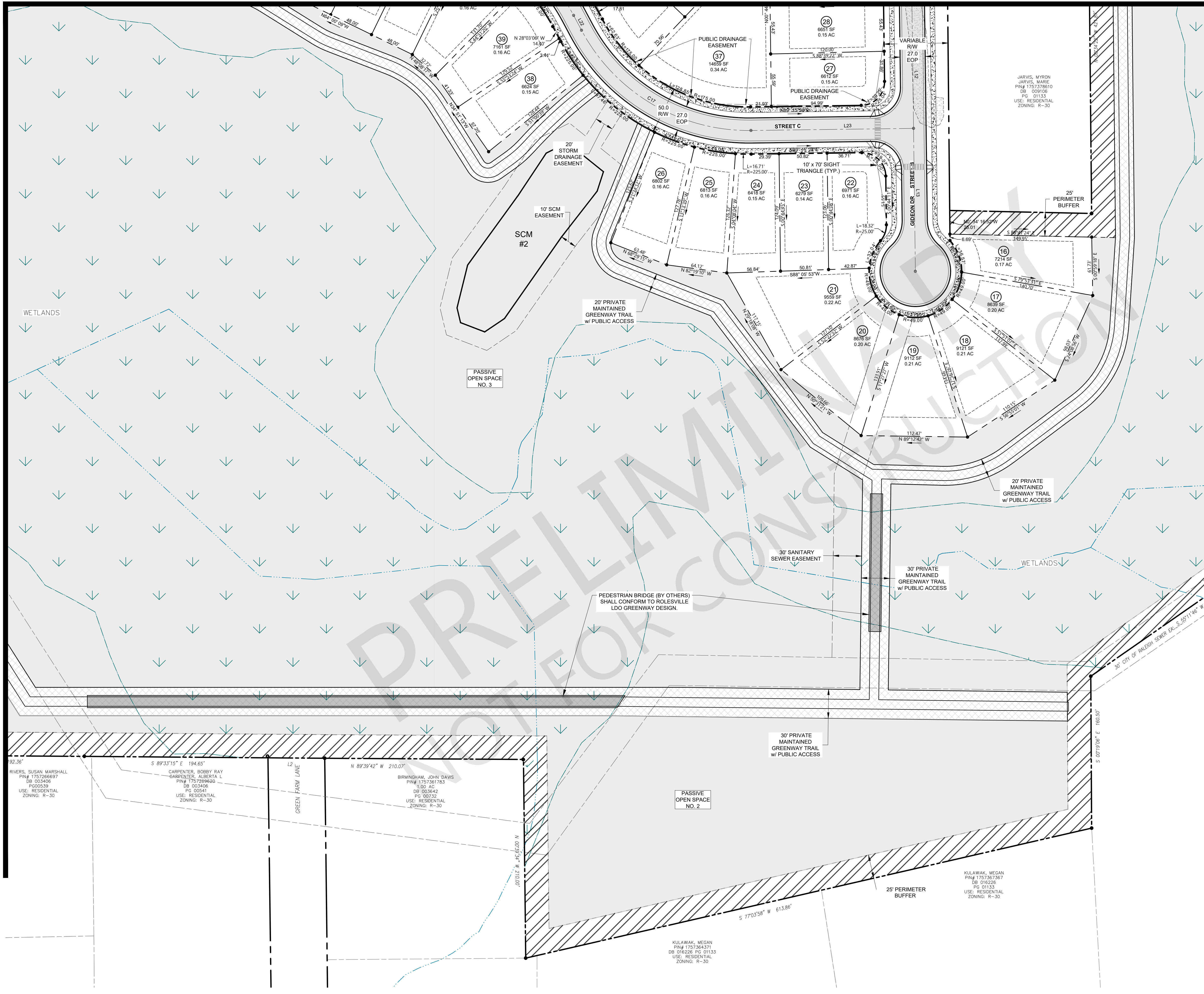
Sheet Title:
SITE PLAN SHEET 2 OF 6

Sheet##:
5

File Location: C:\Users\Tim Newsome\OneDrive - Quantech\Documents - Quantech\Engineering\Harris Creek Farm - Jonesville\Engineering - DWG\Construction Plans\C1.00 Plan Sheets.dwg

File Location: C:\Users\Tim Newsome\OneDrive - Quantech\Documents - Quantech\Engineering\Harris Creek Farm - Jonesville\Engineering - Quantech\Documents - Quantech\Engineering\Harris Creek Farm - Jonesville\Engineering - Quantech\Documents\DWG\Construction Plans\C1.00 Plan Sheets.dwg

MATCHLINE SEE SHEET 6

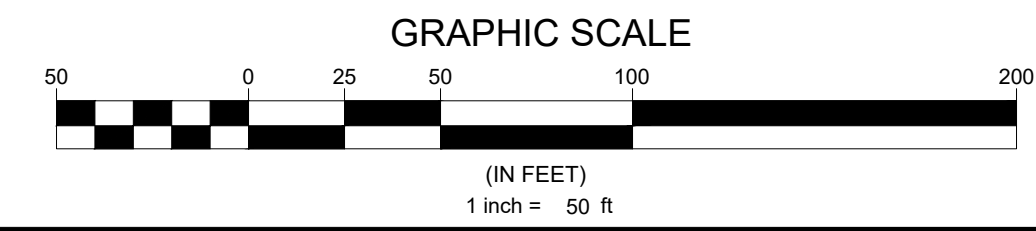


MATCHLINE SEE SHEET 5

MATCHLINE SEE SHEET 9

SITE PLAN LEGEND

PROPOSED R.O.W.	
PROPOSED LOT LINE	
PROPOSED LOT SETBACK	
PROPOSED EASEMENT	
PROPOSED OPEN SPACE	
PROPOSED OPEN SPACE ACTIVE	
PROPOSED OPEN SPACE ACTIVE GREENWAY	
PROPOSED 25' BOUNDARY BUFFER CONSERVATION	



N.C. UNDERGROUND UTILITIES

 3 DAYS BEFORE DIGGING CALL
 TOLL FREE 811 or (800)632-4949
 A ONE CALL SYSTEM FOR COMMUNITY AND JOB SAFETY

Developer
THE CSC GROUP
 10030 Green Level Church Rd, Suite 802 #149, Cary, NC 27519

Engineer

QUANTECH ENGINEERING
 Firm # F-1517
 15000 Weston Parkway
 Cary, N.C. 27513
 (919) 996-9455

Surveyor

BCSO
 Bateman Civil Survey Company
 2524 Reliance Avenue
 Apex, NC 27539
 919-557-1080 ext 109
 www.batemancivilsurvey.com

Jurisdiction / Municipality

Rolesville
 Town of Rolesville
 502 Southtown Cir
 Rolesville, NC 27571
 Phone: 919-554-6517
PSP-24-XX

Other Consultants

Sheet map:

Seal:

FINAL DRAWING - FOR REVIEW PURPOSES ONLY

Issued / Print Date: 2024-July-30 (09:00)
 File Name: C1.00 Plan Sheets.dwg

Last Saved by: Tim Newsome
 Drawn by: JAC

Project:
HARRIS CREEK FARMS
 D2300222

Issued for:
PRELIMINARY PLANS DO NOT USE FOR CONSTRUCTION

REVISIONS		
No.	Date	Description

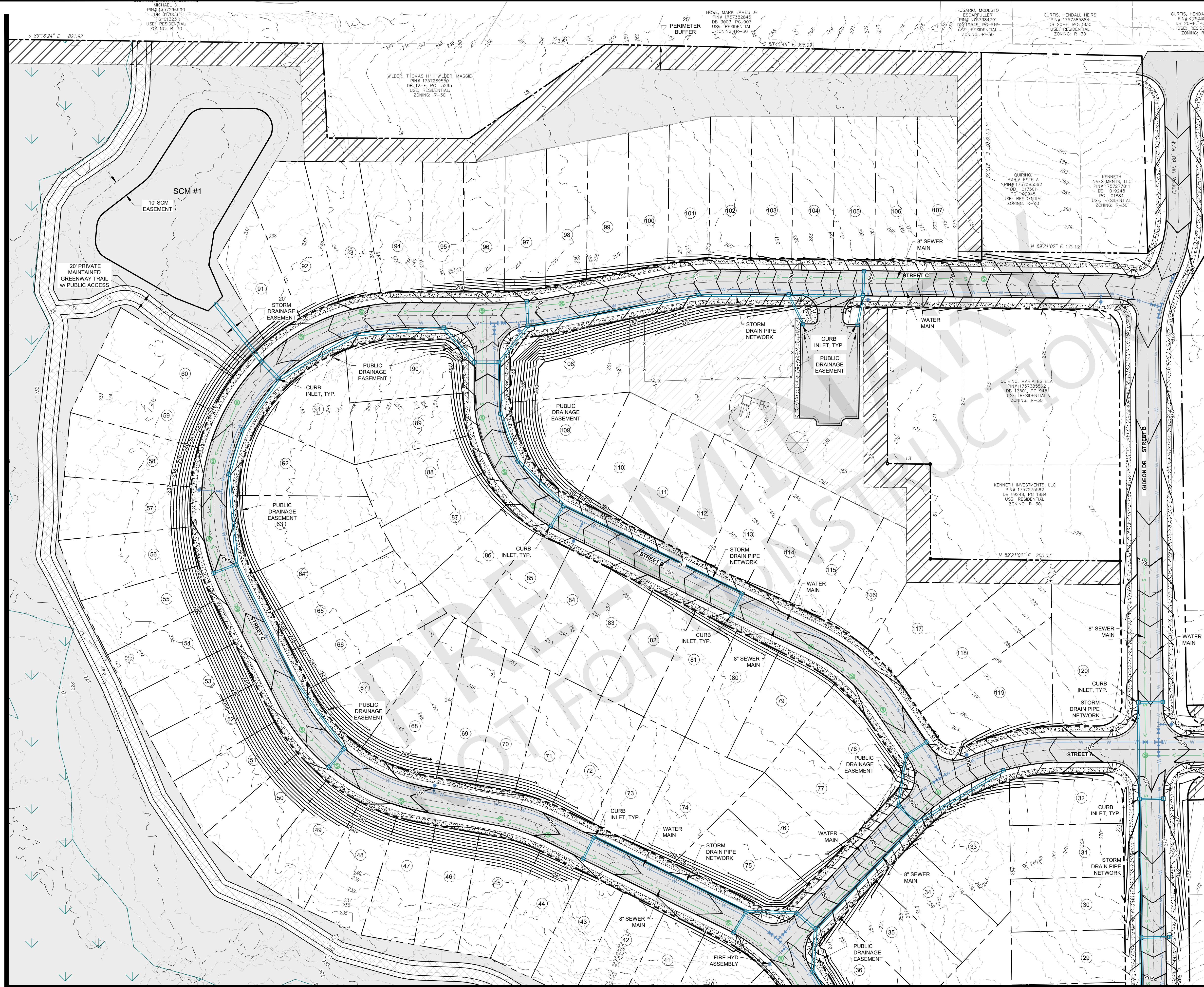
Sheet Title:
SITE PLAN SHEET 4 OF 6

Sheet#:
7

File Location: C:\Users\Tim Newsome\OneDrive - Quantech\Documents - Quantech\Engineering\Harris Creek Farm - Jonesville\Engineering - DWG\Construction Plans\C5.00 Overall Grading Plan.dwg

MATCHLINE SEE SHEET 13

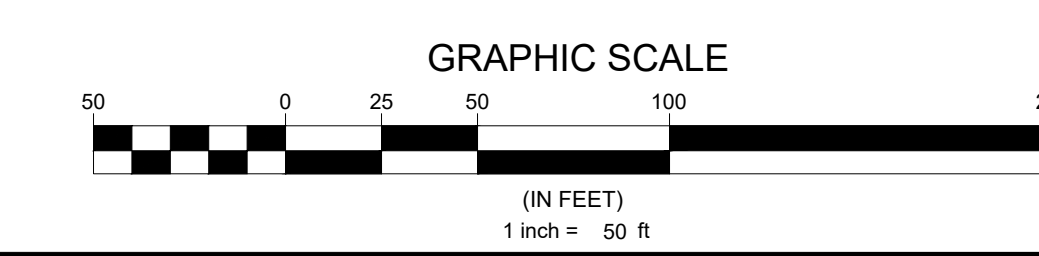
MATCHLINE SEE SHEET 17



MATCHLINE SEE SHEET 16

GRDING PLAN LEGEND

EXISTING MAJOR CONTOUR	---
EXISTING MINOR CONTOUR	- - - - -
PROPOSED MINOR CONTOUR	---
PROPOSED MAJOR CONTOUR	---
PROPOSED R.O.W.	---
PROPOSED LOT LINE	---
EXISTING SEWER LINE	--- SAN --- SAN
EXISTING SEWER MANHOLE	⊙
PROPOSED SEWER LINE	--- S --- S
PROPOSED SEWER MANHOLE	⊙
EXISTING WATER LINE	--- W --- W
PROPOSED WATERLINE	--- W --- W
PROPOSED GATE VALVE	⊕
EXISTING EASEMENT	---
PROPOSED EASEMENT	---
PROPOSED STORM WATER INLET	⊕
PROPOSED STOR PIPE	---



N.C. UNDERGROUND UTILITIES
 3 DAYS BEFORE DIGGING CALL
 TOLL FREE 811 or (800)632-4949
 A ONE CALL SYSTEM FOR COMMUNITY AND JOB SAFETY

Developer
THE CSC GROUP
 10030 Green Level Church Rd, Suite 802 #149, Cary, NC 27519

Engineer

QUANTECH ENGINEERING
 Firm # F-1517
 15000 Weston Parkway
 Cary, N.C. 27513
 (919) 996-9455

Surveyor

BCSO Bateman Civil Survey Company
 2524 Reliance Avenue
 Apex, NC 27539
 919-557-1090 ext 109
 www.batemancivilsurvey.com

Jurisdiction / Municipality

Rolesville
 Town of Rolesville
 502 Southtown Cir
 Rolesville, NC 27571
 Phone: 919-554-6517
 PSP-24-XX

Other Consultants

Sheet map:

Seal:

 2024/Jul/30 SEAL
 53676
 BRYAN A. HARRIS
 ENGINEER

FINAL DRAWING - FOR REVIEW PURPOSES ONLY

Issued / Print Date: 2024-July-30 (09:02)
 File Name: C5.00 Overall Grading Plan.dwg

Last Saved by: Tim Newsome
 Drawn by: JAC

Project:
HARRIS CREEK FARMS
 D2300222

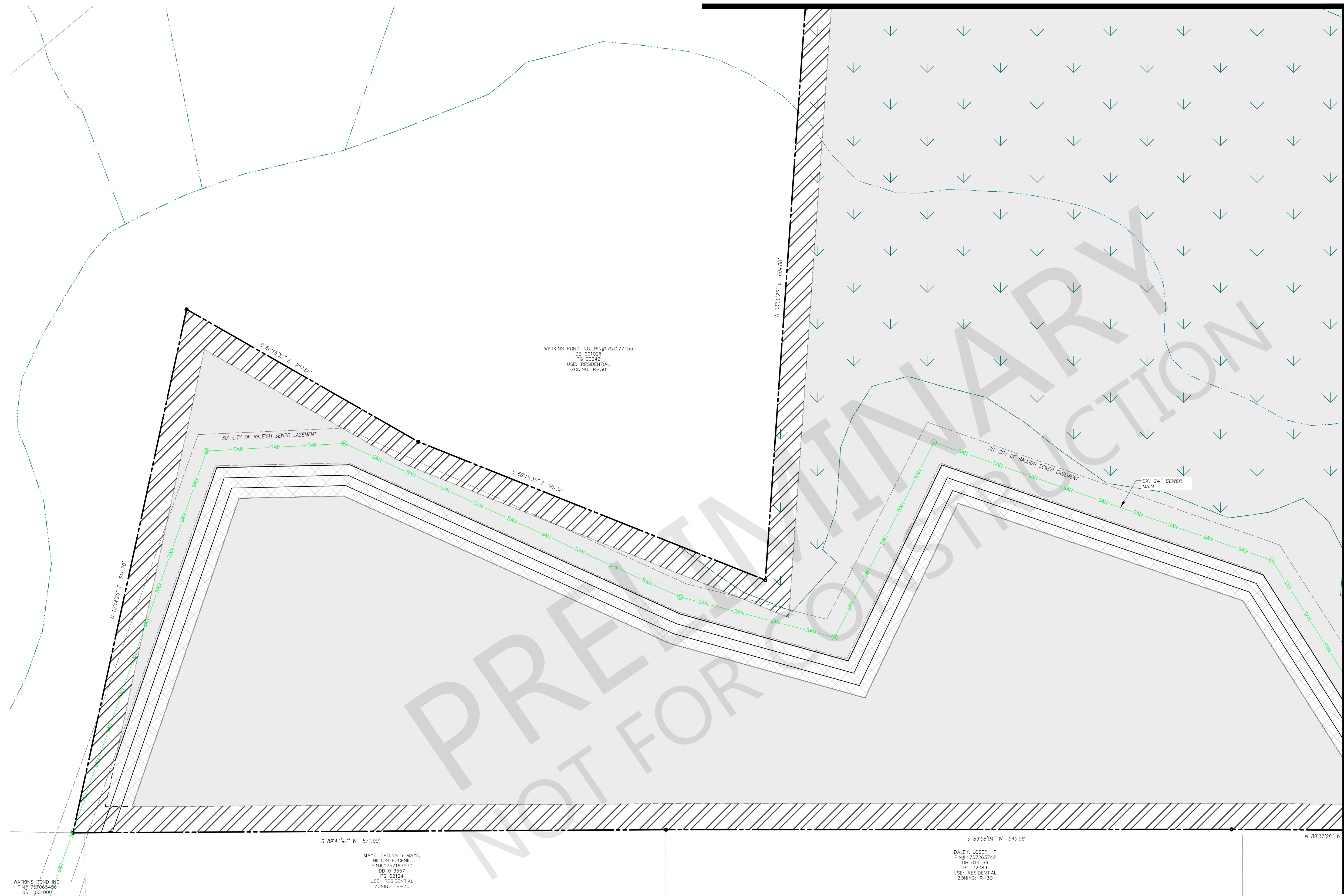
Issued for: **PRELIMINARY PLANS DO NOT USE FOR CONSTRUCTION**

REVISIONS		
No.	Date	Description

Sheet Title: **GRADING & DRAINAGE PLAN SHEET 3 OF 6**

Sheet #:
15

MATCHLINE SEE SHEET 20



MATCHLINE SEE SHEET 23

File Location: C:\Users\Tim Newsome\OneDrive - Quantech\Documents - Quantech\Engineering\Harris Creek Farm - Jonesville\Engineering - DWG\Construction Plans\C6.00 Overall Utility Plan.dwg

WATKINS POND, INC.
PIN# 175263453
DB 001026
PG 00242
USE: RESIDENTIAL
ZONING: R-30

MAYE, EVELYN Y MAYE,
HILTON EUGENE
PIN# 1757167570
DB 013557
PG 02124
USE: RESIDENTIAL
ZONING: R-30

DALEY, JOSEPH P
PIN# 1757265742
DB 016569
PG 02089
USE: RESIDENTIAL
ZONING: R-30

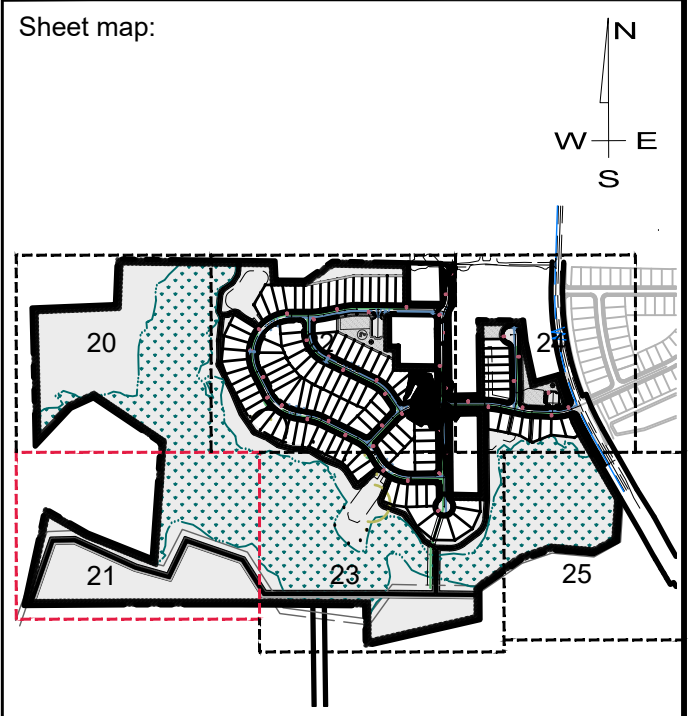
Developer
 **THE CSC GROUP**
 CONTRIBUTE TO THE SUCCESS OF LOCAL COMMUNITY
 10030 Green Level Church Rd, Suite 802 #149, Cary, NC 27519

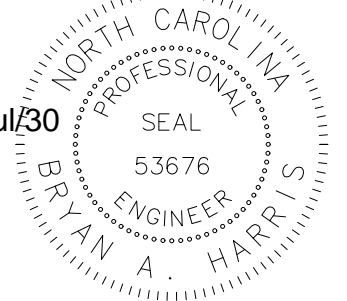
Engineer
 **QUANTECH ENGINEERING**
 INNOVATIVE SOLUTIONS | ENGINEERING THE FUTURE
 Firm # F-1517
 15000 Weston Parkway
 Cary, N.C. 27513
 (919) 996-9455

Surveyor
 **BCSO** Bateman Civil Survey Company
 2524 Reliance Avenue
 Apex, NC 27539
 919-557-1080 ext 109
www.batemancivilsurvey.com

Jurisdiction / Municipality
 **Rolesville**
 Complete Communities. Digital Connections.
 Town of Rolesville
 502 Southtown Cir
 Rolesville, NC 27571
 Phone: 919-554-6517
PSP-24-XX

Other Consultants



Seal:

 2024/Jul/30
FINAL DRAWING - FOR REVIEW PURPOSES ONLY

Issued / Print Date: 2024-July-30 (09:04)
 File Name: C6.00 Overall Utility Plan.dwg
 Last Saved by: Tim Newsome
 Drawn by: JAC

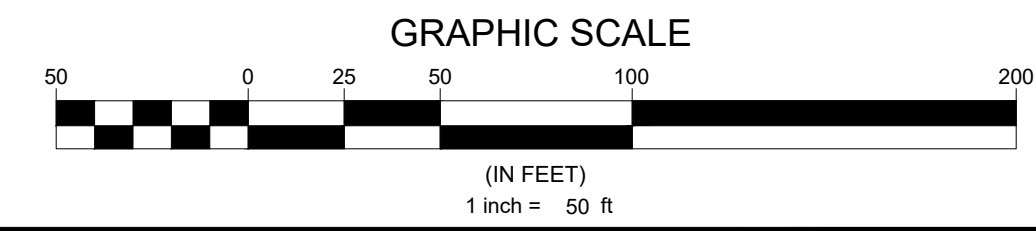
Project:
HARRIS CREEK FARMS
 D2300222


Issued for: **PRELIMINARY PLANS DO NOT USE FOR CONSTRUCTION**

REVISIONS		
No.	Date	Description

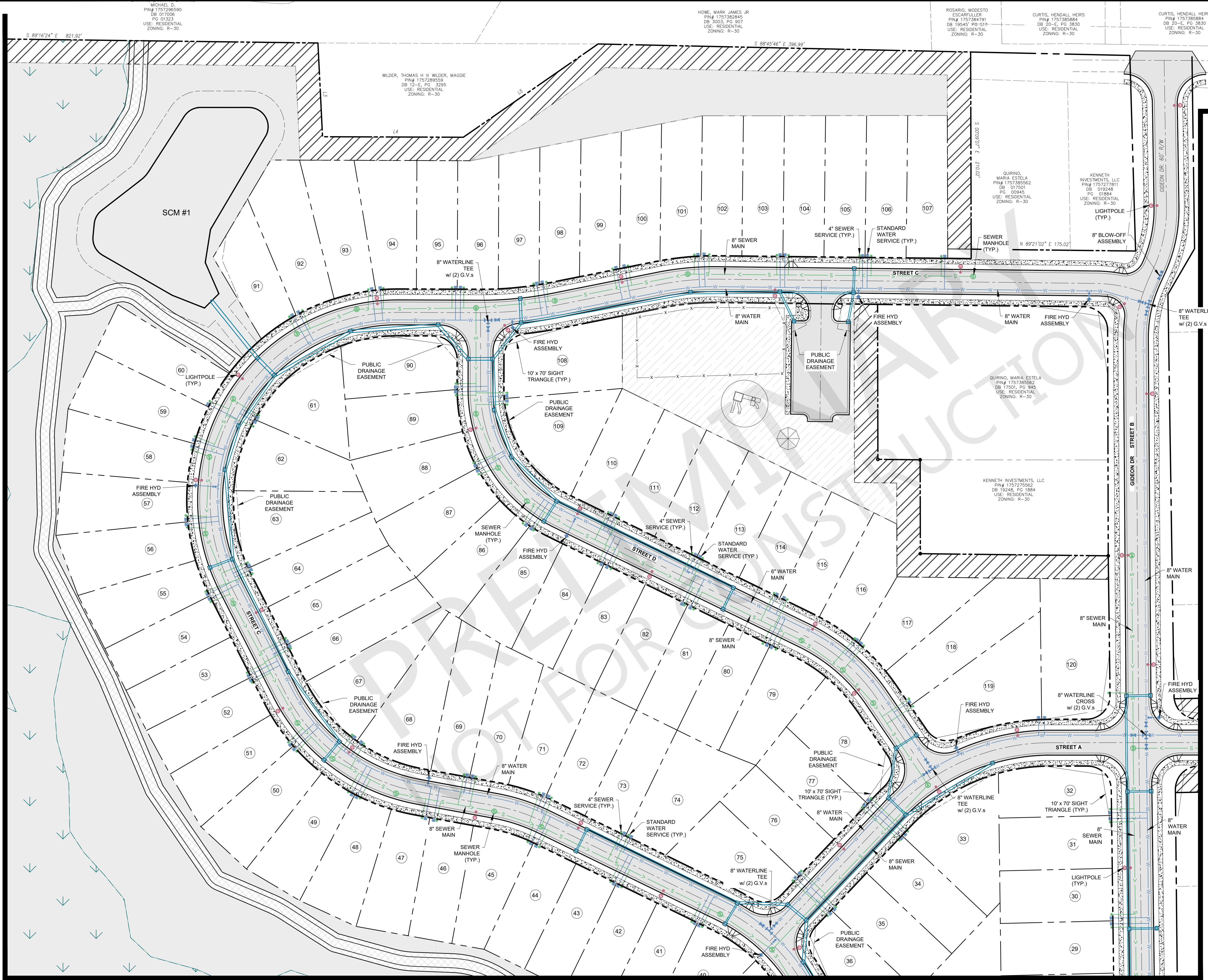
Sheet Title:
UTILITY PLAN SHEET 2 OF 6

Sheet #:
21



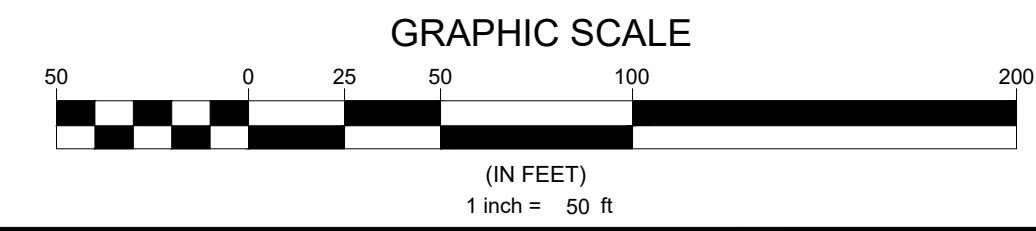
N.C. UNDERGROUND UTILITIES
 **811**
 3 DAYS BEFORE DIGGING CALL
 TOLL FREE 811 or (800)632-4949
 A ONE CALL SYSTEM FOR COMMUNITY AND JOB SAFETY

File Location: C:\Users\Tim Newsome\OneDrive - Quantech\Documents - Quantech\Engineering\Harris Creek Farm - Jonesville\Engineering - DWG\Construction\Plans\C6.00 Overall Utility Plan.dwg



UTILITY PLAN LEGEND

PROPOSED R.O.W.	---
PROPOSED LOT LINE	---
EXISTING SEWER LINE	--- SAN --- SAN
EXISTING SEWER MANHOLE	⊙
PROPOSED SEWER LINE	--- S ---
PROPOSED SEWER MANHOLE	⊙
PROPOSED SEWER CLEANOUT	⊙
EXISTING WATER LINE	--- W --- W --- W ---
PROPOSED WATER LINE	--- W --- W --- W ---
PROPOSED WATER SERVICE	--- W ---
PROPOSED GATE VALVE	⊙
PROPOSED FIRE HYDRANT	⊙
EXISTING EASEMENT	---
PROPOSED EASEMENT	---
LIGHT POLE	⊙



N.C. UNDERGROUND UTILITIES
811
 3 DAYS BEFORE DIGGING CALL
 TOLL FREE 811 or (800)632-4949
 A ONE CALL SYSTEM FOR COMMUNITY AND JOB SAFETY

Developer
THE CSC GROUP
 CONTRIBUTE TO THE SUCCESS OF LOCAL COMMUNITY
 10030 Green Level Church Rd, Suite 802 #149, Cary, NC 27519

Engineer

QUANTECH ENGINEERING
 INNOVATIVE SOLUTIONS | ENGINEERING THE FUTURE
 Firm # F-1517
 15000 Weston Parkway
 Cary, N.C. 27513
 (919) 996-9455

Surveyor

BCSO Bateman Civil Survey Company
 2524 Reliance Avenue
 Apex, NC 27539
 919-557-1080 ext 109
 www.batemancivilsurvey.com

Jurisdiction / Municipality

Rolesville
 Town of Rolesville
 502 Southtown Cir
 Rolesville, NC 27571
 Phone: 919-554-6517
PSP-24-XX

Other Consultants

Sheet map:

Seal:

FINAL DRAWING - FOR REVIEW PURPOSES ONLY

Issued / Print Date: 2024-July-30 (09:04)
File Name: C6.00 Overall Utility Plan.dwg

Last Saved by: Tim Newsome
Drawn by: JAC

Project:
HARRIS CREEK FARMS
 D2300222

Issued for:
**PRELIMINARY PLANS
 DO NOT USE FOR
 CONSTRUCTION**

REVISIONS		
No.	Date	Description

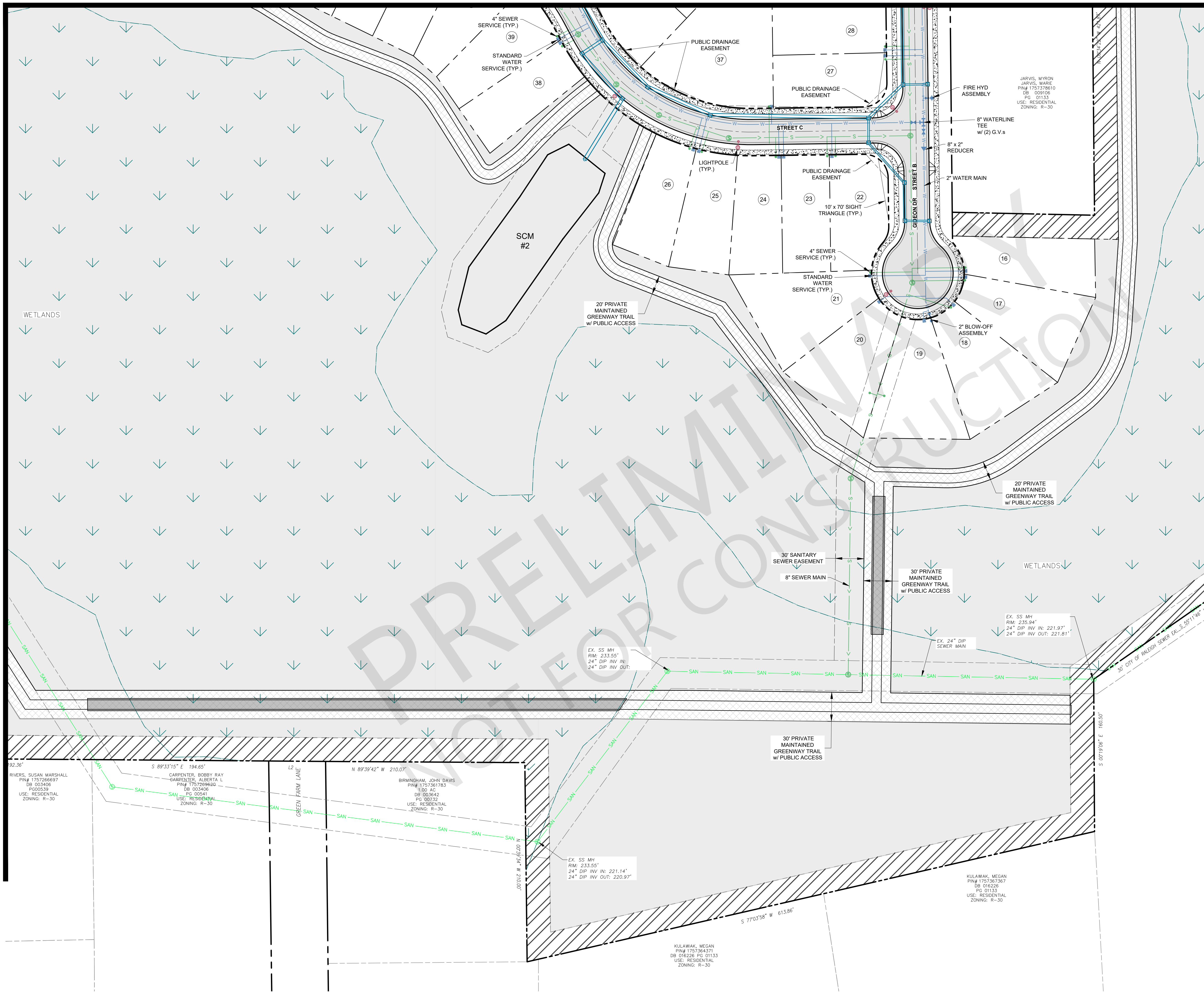
Sheet Title:
**UTILITY PLAN
 SHEET 3 OF 6**

Sheet #:
22

File Location: C:\Users\Tim Newsome\OneDrive - Quantech\Documents - Quantech\Engineering\Harris Creek Farm - Jonesville\Engineering\DWG\Construction Plans\C6.00 Overall Utility Plan.dwg

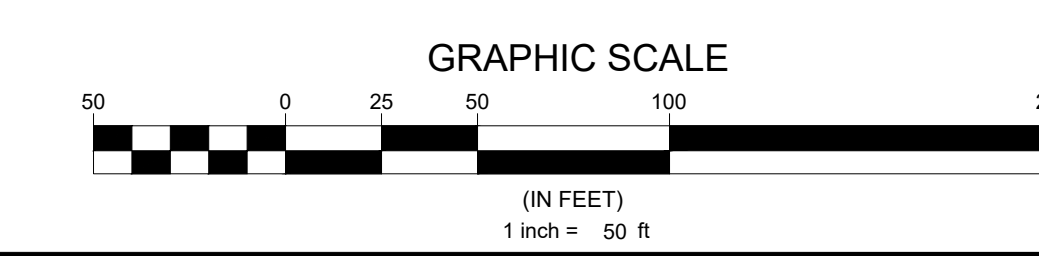
MATCHLINE SEE SHEET 21

MATCHLINE SEE SHEET 25



UTILITY PLAN LEGEND

PROPOSED R.O.W.	---
PROPOSED LOT LINE	---
EXISTING SEWER LINE	— SAN — SAN —
EXISTING SEWER MANHOLE	⊙
PROPOSED SEWER LINE	— S —
PROPOSED SEWER MANHOLE	⊙
PROPOSED SEWER CLEANOUT	— S —
EXISTING WATER LINE	— W — W — W —
PROPOSED WATER LINE	— W — W — W —
PROPOSED WATER SERVICE	— W —
PROPOSED GATE VALVE	⊕
PROPOSED FIRE HYDRANT	⊕
EXISTING EASEMENT	---
PROPOSED EASEMENT	---
LIGHT POLE	⊙



N.C. UNDERGROUND UTILITIES
 3 DAYS BEFORE DIGGING CALL
 TOLL FREE 811 or (800)632-4949
 A ONE CALL SYSTEM FOR COMMUNITY AND JOB SAFETY

Developer
THE CSC GROUP
 CONtribute to the success of local community
 10030 Green Level Church Rd, Suite 802 #149, Cary, NC 27519

Engineer

QUANTECH ENGINEERING
 Firm # F-1517
 15000 Weston Parkway
 Cary, N.C. 27513
 (919) 996-9455

Surveyor

BCSO Bateman Civil Survey Company
 2524 Reliance Avenue
 Apex, NC 27539
 919-557-1080 ext 109
 www.batemancivilsurvey.com

Jurisdiction / Municipality

Rolesville
 Town of Rolesville
 502 Southtown Cir
 Rolesville, NC 27571
 Phone: 919-554-6517
 PSP-24-XX

Other Consultants

Sheet map:

Seal:

 2024/Jul/30
FINAL DRAWING - FOR REVIEW PURPOSES ONLY

Issued / Print Date: 2024-July-30 (09:04)
 File Name: C6.00 Overall Utility Plan.dwg

Last Saved by: Tim Newsome
 Drawn by: JAC

Project:
HARRIS CREEK FARMS
 D2300222

Issued for:
PRELIMINARY PLANS DO NOT USE FOR CONSTRUCTION

REVISIONS		
No.	Date	Description

Sheet Title:
UTILITY PLAN SHEET 4 OF 6

Sheet#:
23

