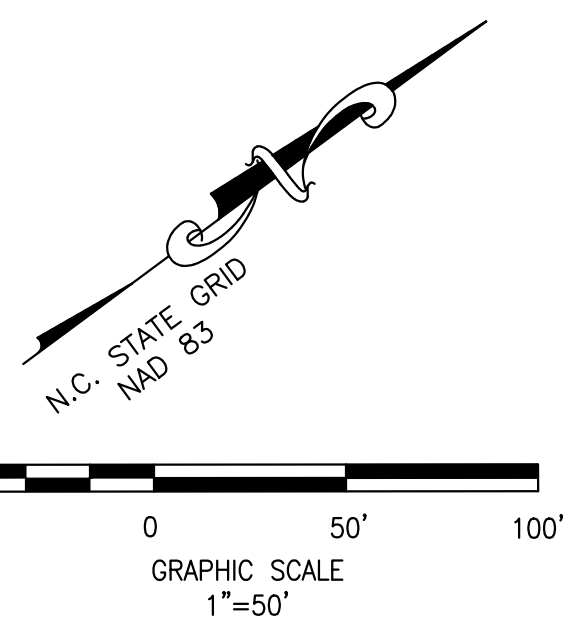
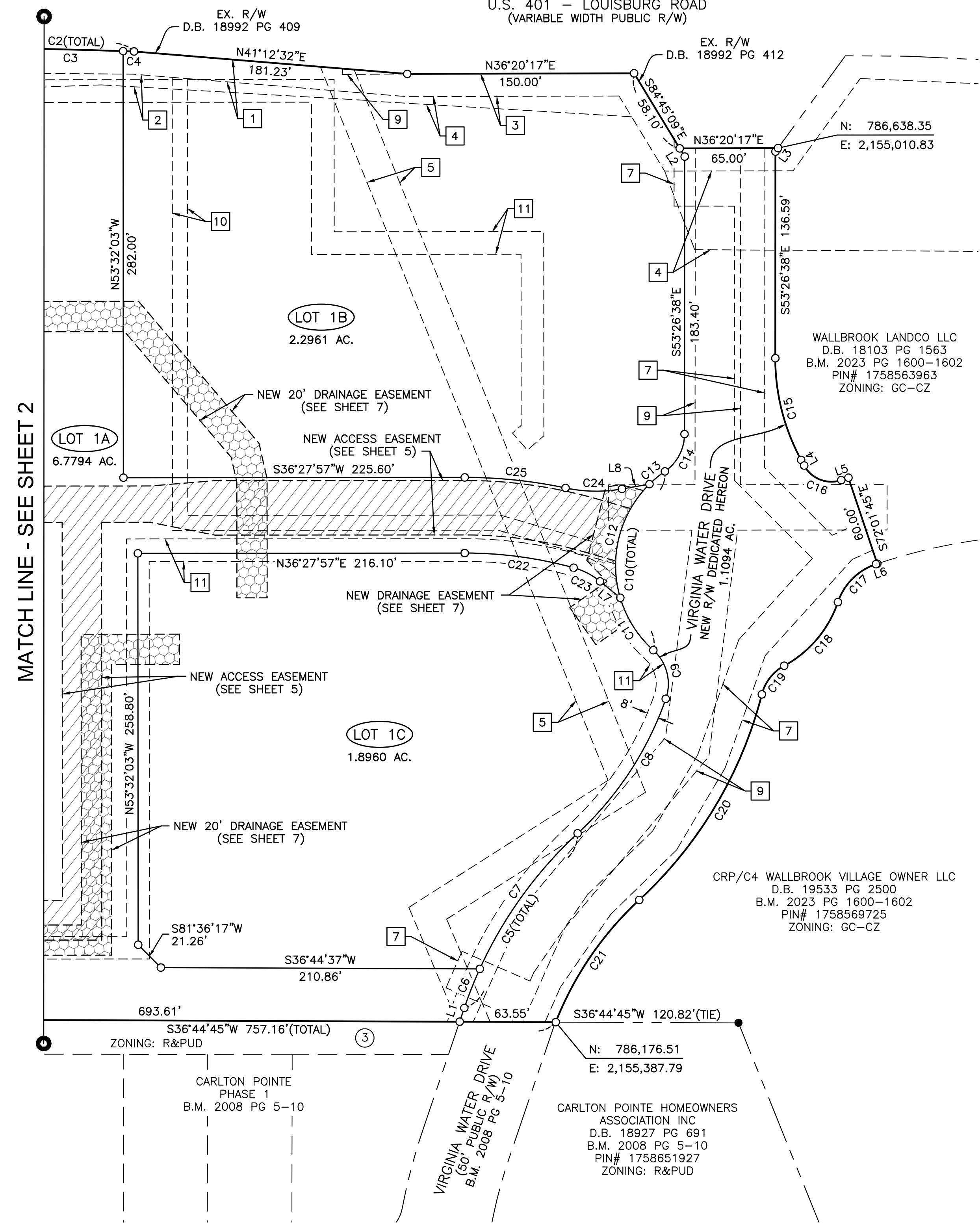


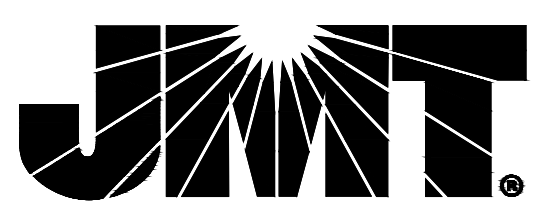
U.S. 401 - LOUISBURG ROAD
(VARIABLE WIDTH PUBLIC R/W)

MATCH LINE - SEE SHEET 2



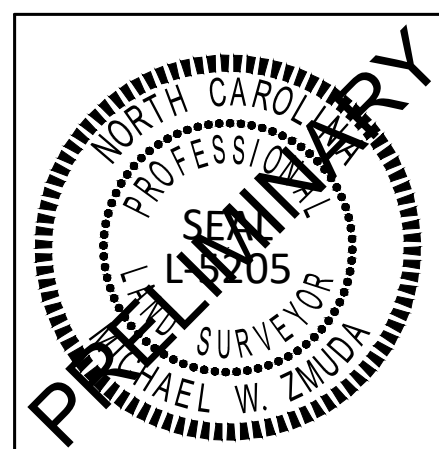
- LEGEND**
- = FOUND MONUMENT AS NOTED
 - = SET IRON REBAR
 - = DIMENSION POINT (NOTHING SET)
 - ① = KEYNOTE - SEE PROPERTY OWNER TABLE
 - ① = KEYNOTE - SEE EXISTING EASEMENT TABLE
 - B.M. = BOOK OF MAPS
 - D.B. = DEED BOOK
 - R = PROPERTY LINE
 - R/W = RIGHT OF WAY
 - = BOUNDARY LINE
 - - - = RIGHT OF WAY LINE
 - - - = ADJOINING PROPERTY LINE
 - - - = EASEMENT LINE
 - ▨ = NEW ACCESS EASEMENT
 - ▩ = NEW DRAINAGE EASEMENT

- PROPERTY OWNERS**
- ①
CARLTON GROUP OF NORTH CAROLINA, LLC
D.B. 17492 PG 1959
B.M. 2022 PG 1178-1179
PIN# 1758455024
ZONING: R&PUD
 - ②
CARLTON POINTE HOMEOWNERS ASSOCIATION INC
D.B. 18927 PG 691
B.M. 2008 PG 5-10
PIN# 1758445944
ZONING: R&PUD
 - ③
CARLTON POINTE HOMEOWNERS ASSOCIATION INC
D.B. 18927 PG 691
B.M. 2008 PG 5-10
PIN# 1758551729
ZONING: R&PUD



9201 ARBORETUM PARKWAY, SUITE 310 | RICHMOND, VA 23236
P: (804) 323-9900 | F: (804) 323-0596 | www.jmt.com

REVISION #	DATE	REASON FOR REVISION



FINAL SUBDIVISION PLAT
WALLBROOK

A DIVISION OF TRACT 'B' OF THE INTERMEDIATE SUBDIVISION
PLAT RECORDED IN B.M. 2023 PG 1600-1602

TOWN OF ROLESVILLE, WAKE COUNTY, NORTH CAROLINA

DRAWN BY: JSZ	PROJECT #: FSP 24-22
CHECKED BY: MWZ	CONTRACT#: JMT#: 19-04194-011
PLAT DATE: 11/27/2024	SCALE: 1"=50' SHEET 3 OF 8

CARLTON POINTE PHASE 1
B.M. 2008 PG 5-10

CARLTON POINTE HOMEOWNERS ASSOCIATION INC
D.B. 18927 PG 691
B.M. 2008 PG 5-10
PIN# 1758651927
ZONING: R&PUD

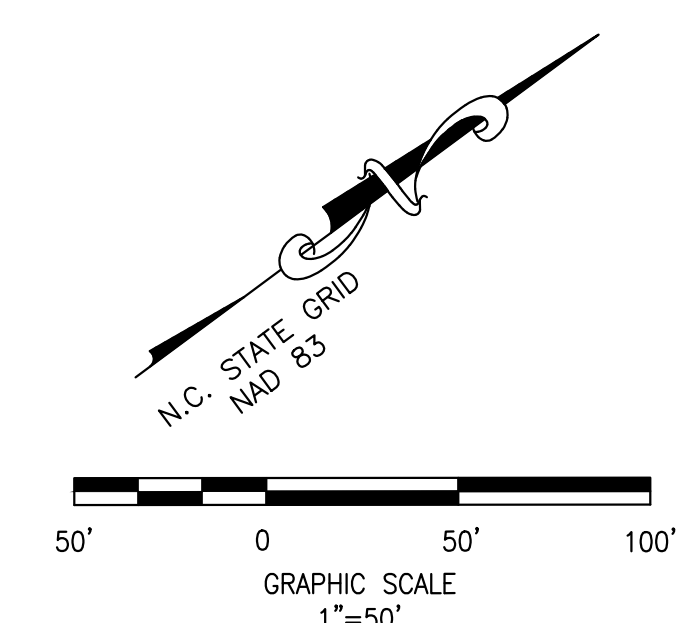
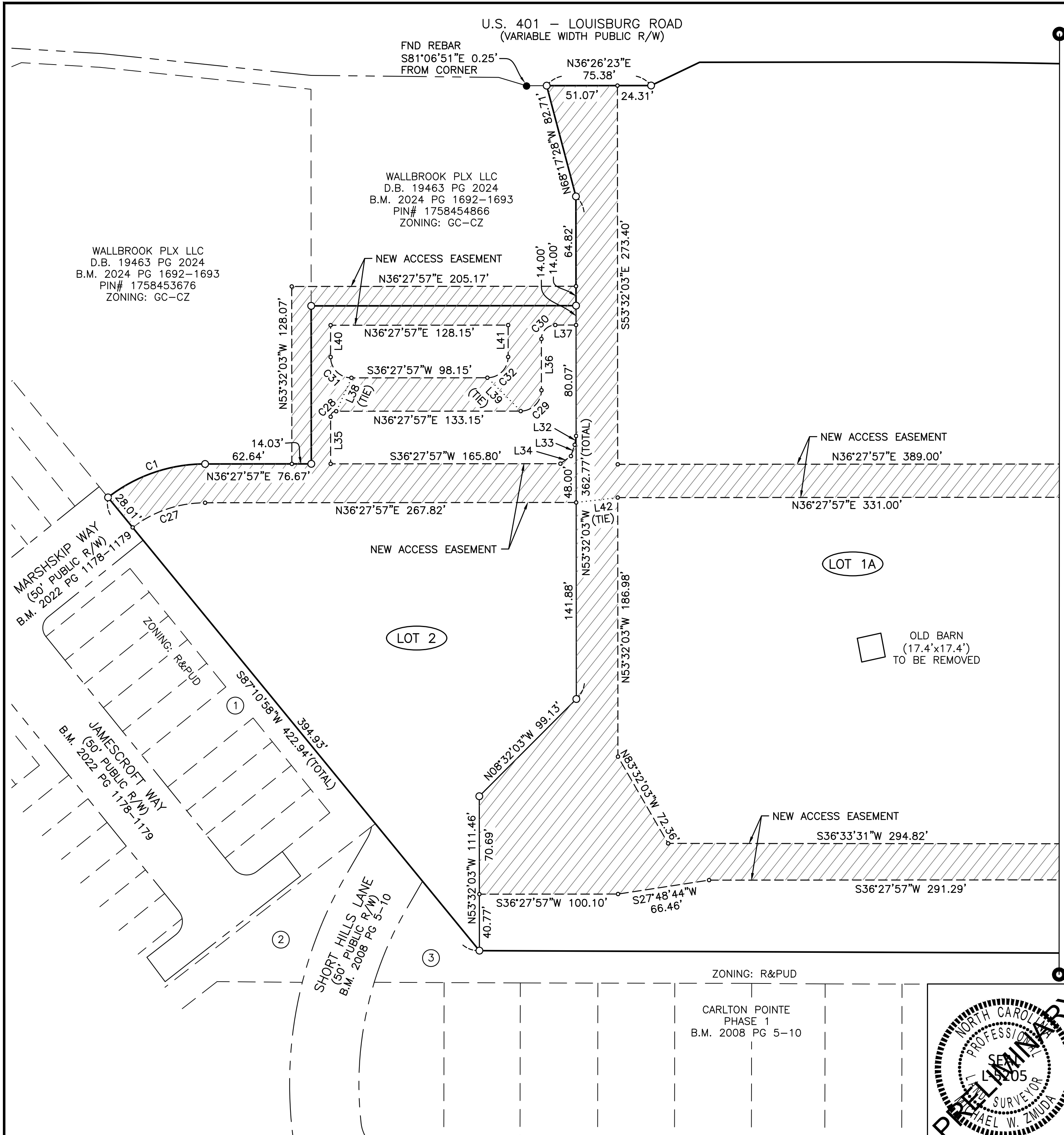
CRP/C4 WALLBROOK VILLAGE OWNER LLC
D.B. 19533 PG 2500
B.M. 2023 PG 1600-1602
PIN# 1758569725
ZONING: GC-CZ

WALLBROOK LANDCO LLC
D.B. 18103 PG 1563
B.M. 2023 PG 1600-1602
PIN# 1758563963
ZONING: GC-CZ

S36°44'45"W 757.16'(TOTAL)
ZONING: R&PUD

N: 786,176.51
E: 2,155,387.79

N: 786,638.35
E: 2,155,010.83



- LEGEND**
- = FOUND MONUMENT AS NOTED
 - = SET IRON REBAR
 - = DIMENSION POINT (NOTHING SET)
 - ① = KEYNOTE - SEE PROPERTY OWNER TABLE
 - ② = KEYNOTE - SEE EXISTING EASEMENT TABLE
 - B.M. = BOOK OF MAPS
 - D.B. = DEED BOOK
 - R = PROPERTY LINE
 - R/W = RIGHT OF WAY
 - = BOUNDARY LINE
 - - - = RIGHT OF WAY LINE
 - - - = ADJOINING PROPERTY LINE
 - - - = EASEMENT LINE
 - ▨ = NEW ACCESS EASEMENT
 - ▨ = NEW DRAINAGE EASEMENT

- PROPERTY OWNERS**
- ①
CARLTON GROUP OF
NORTH CAROLINA, LLC
D.B. 17492 PG 1959
B.M. 2022 PG 1178-1179
PIN# 1758455024
ZONING: R&PUD
 - ②
CARLTON POINTE HOMEOWNERS
ASSOCIATION INC
D.B. 18927 PG 691
B.M. 2008 PG 5-10
PIN# 1758445944
ZONING: R&PUD
 - ③
CARLTON POINTE HOMEOWNERS
ASSOCIATION INC
D.B. 18927 PG 691
B.M. 2008 PG 5-10
PIN# 1758551729
ZONING: R&PUD

9201 ARBORETUM PARKWAY, SUITE 310 | RICHMOND, VA 23236
P: (804) 323-9900 | F: (804) 323-0596 | www.jmt.com

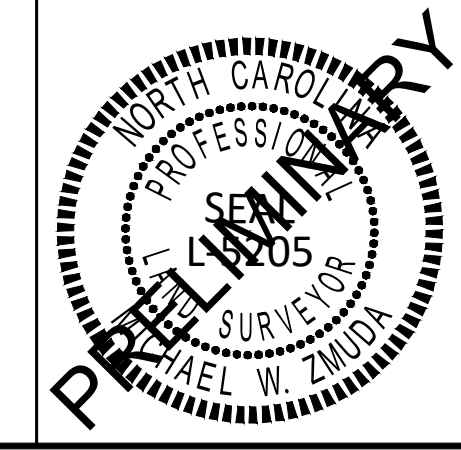
MATCH LINE - SEE SHEET 5

REVISION #	DATE	REASON FOR REVISION

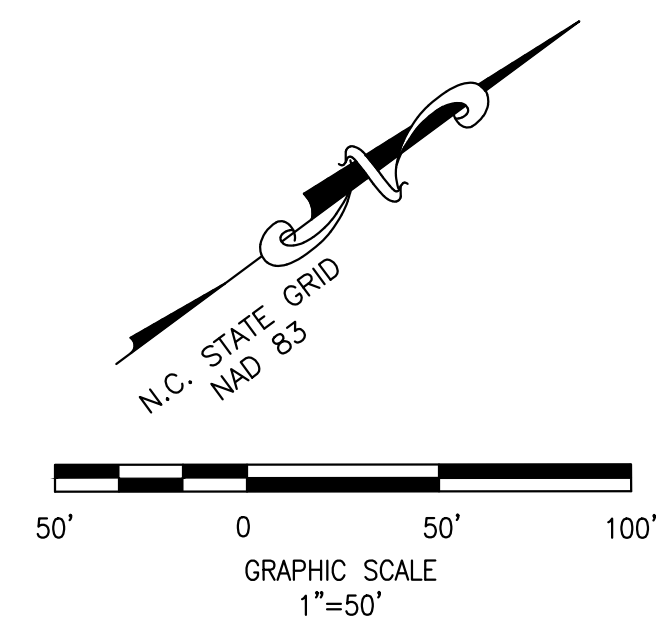
FINAL SUBDIVISION PLAT
WALLBROOK
A DIVISION OF TRACT 'B' OF THE INTERMEDIATE SUBDIVISION
PLAT RECORDED IN B.M. 2023 PG 1600-1602

TOWN OF ROLESVILLE, WAKE COUNTY, NORTH CAROLINA

DRAWN BY: JSZ	PROJECT #: FSP 24-22
CHECKED BY: MWZ	CONTRACT#: JMT#: 19-04194-011
PLAT DATE: 11/27/2024	SCALE: 1"=50' SHEET 4 OF 8



U.S. 401 — LOUISBURG ROAD
(VARIABLE WIDTH PUBLIC R/W)



LEGEND

- = FOUND MONUMENT AS NOTED
- = SET IRON REBAR
- = DIMENSION POINT (NOTHING SET)
- ① = KEYNOTE — SEE PROPERTY OWNER TABLE
- ② = KEYNOTE — SEE EXISTING EASEMENT TABLE
- B.M. = BOOK OF MAPS
- D.B. = DEED BOOK
- R = PROPERTY LINE
- R/W = RIGHT OF WAY
- = BOUNDARY LINE
- - - = RIGHT OF WAY LINE
- - - = ADJOINING PROPERTY LINE
- - - = EASEMENT LINE
- ▨ = NEW ACCESS EASEMENT
- ▩ = NEW DRAINAGE EASEMENT

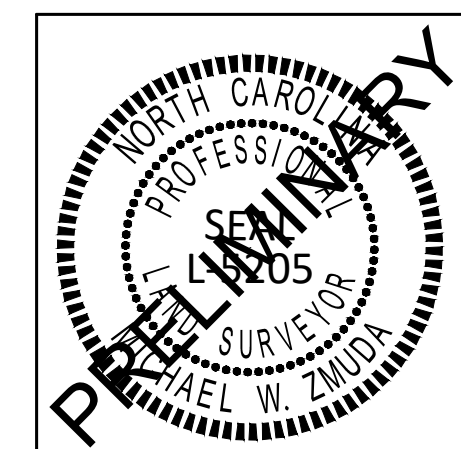
PROPERTY OWNERS

- ①
CARLTON GROUP OF NORTH CAROLINA, LLC
D.B. 17492 PG 1959
B.M. 2022 PG 1178-1179
PIN# 1758455024
ZONING: R&PUD
- ②
CARLTON POINTE HOMEOWNERS ASSOCIATION INC
D.B. 18927 PG 691
B.M. 2008 PG 5-10
PIN# 1758445944
ZONING: R&PUD
- ③
CARLTON POINTE HOMEOWNERS ASSOCIATION INC
D.B. 18927 PG 691
B.M. 2008 PG 5-10
PIN# 1758551729
ZONING: R&PUD



9201 ARBORETUM PARKWAY, SUITE 310 | RICHMOND, VA 23236
P: (804) 323-9900 | F: (804) 323-0596 | www.jmt.com

REVISION #	DATE	REASON FOR REVISION



FINAL SUBDIVISION PLAT
WALLBROOK
A DIVISION OF TRACT 'B' OF THE INTERMEDIATE SUBDIVISION
PLAT RECORDED IN B.M. 2023 PG 1600-1602
TOWN OF ROLESVILLE, WAKE COUNTY, NORTH CAROLINA

DRAWN BY: JSZ	PROJECT #: FSP 24-22
CHECKED BY: MWZ	CONTRACT#: JMT#: 19-04194-011
PLAT DATE: 11/27/2024	SCALE: 1"=50' SHEET 5 OF 8

MATCH LINE - SEE SHEET 4

LOT 1A

LOT 1B

LOT 1C

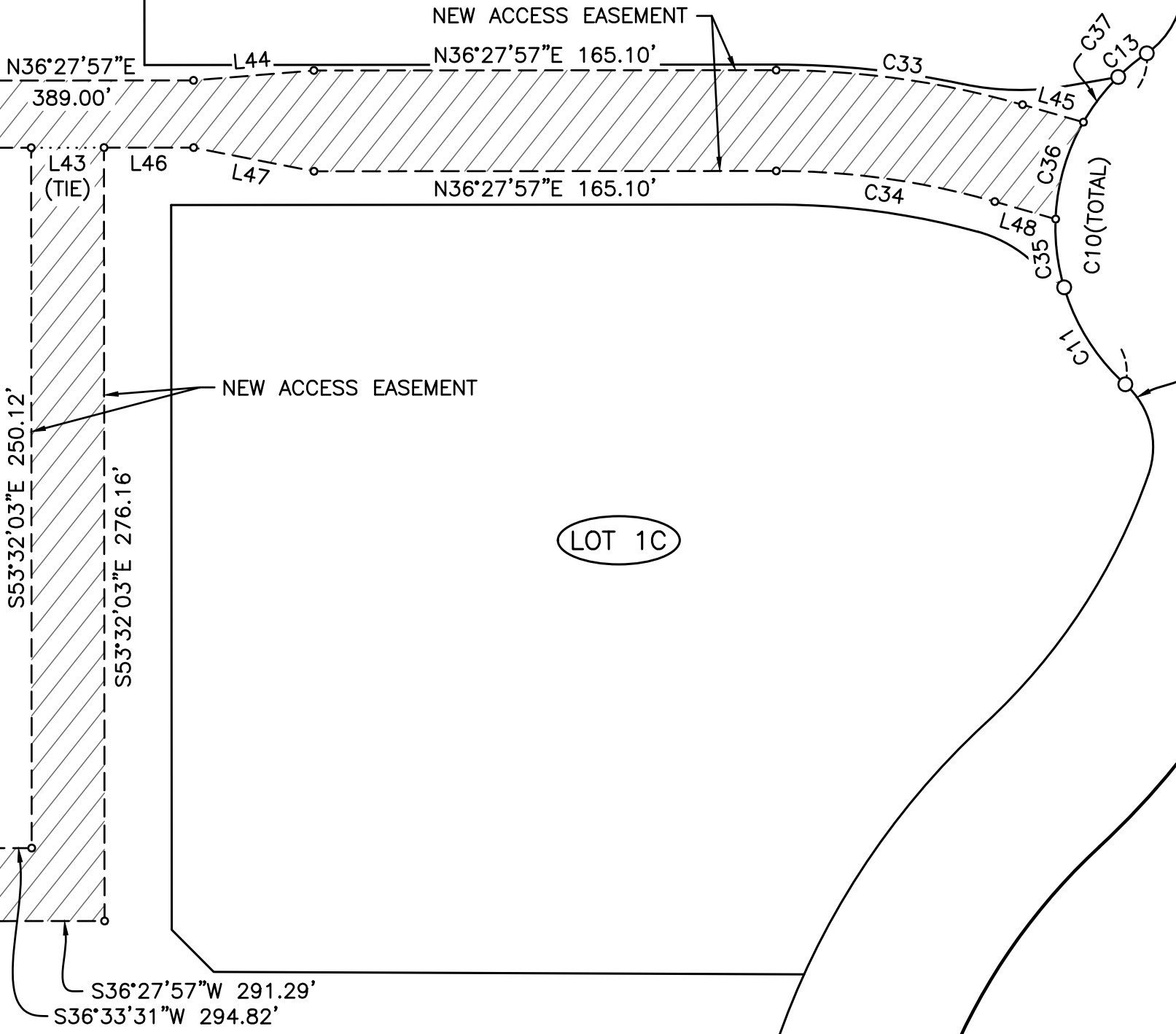
WALLBROOK LANDCO LLC
D.B. 18103 PG 1563
B.M. 2023 PG 1600-1602
PIN# 1758563963
ZONING: GC-CZ

CRP/C4 WALLBROOK VILLAGE OWNER LLC
D.B. 19533 PG 2500
B.M. 2023 PG 1600-1602
PIN# 1758569725
ZONING: GC-CZ

CARLTON POINTE HOMEOWNERS ASSOCIATION INC
D.B. 18927 PG 691
B.M. 2008 PG 5-10
PIN# 1758651927
ZONING: R&PUD

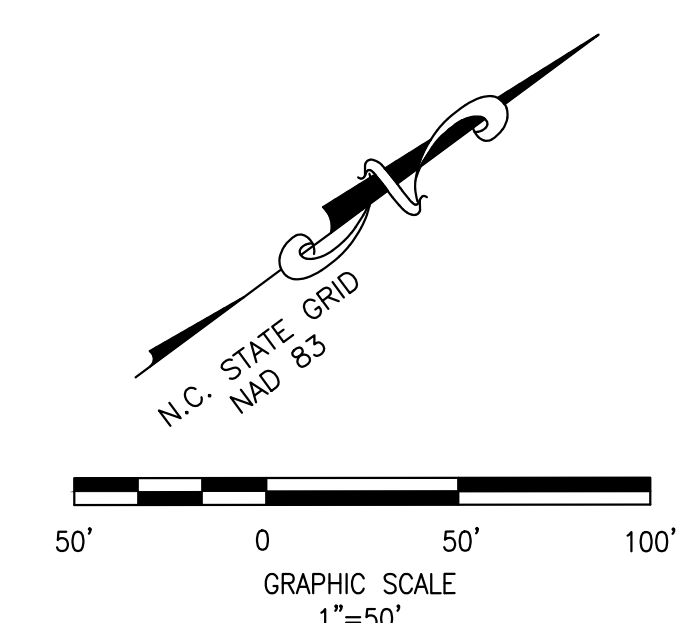
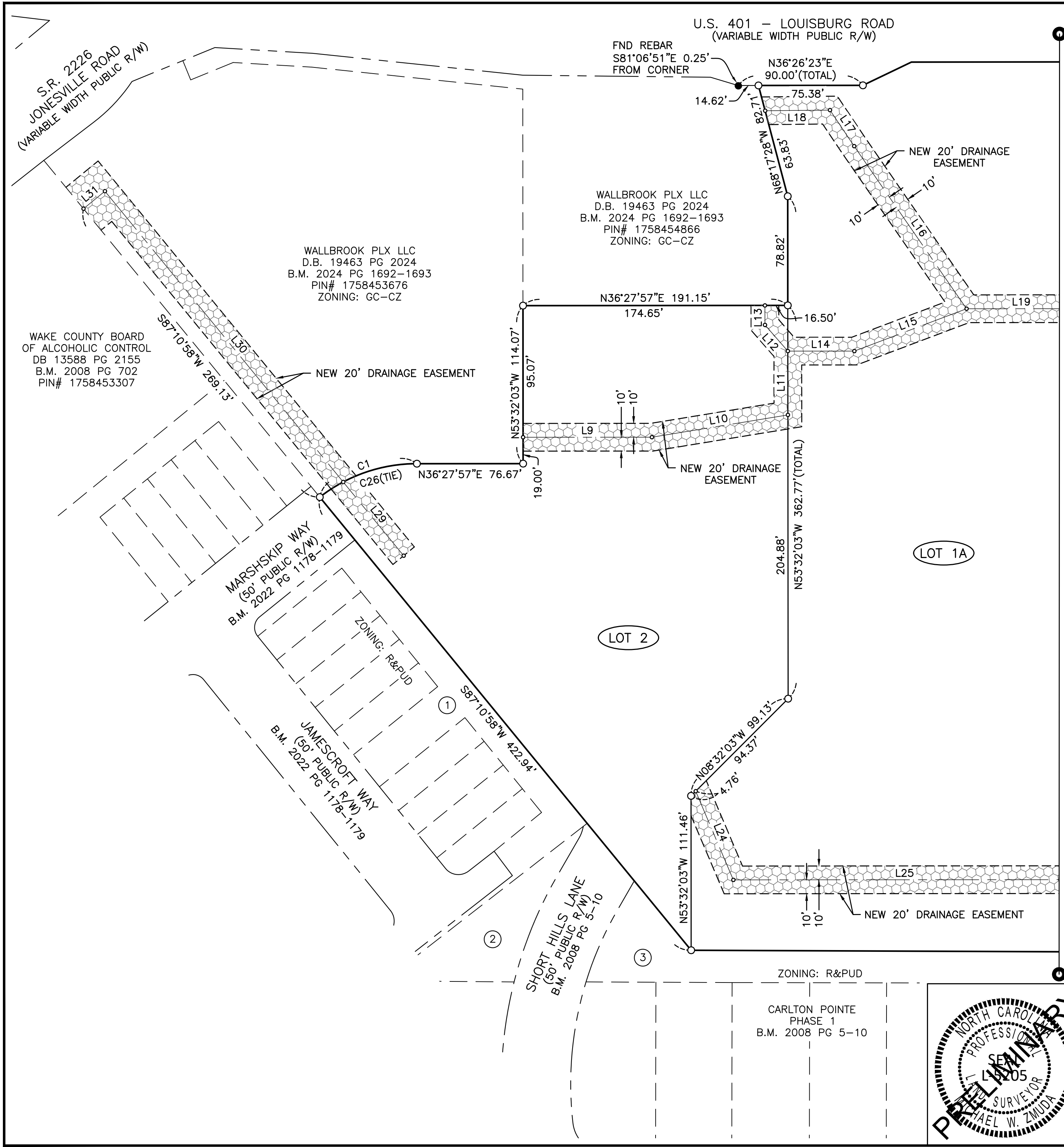
CARLTON POINTE PHASE 1
B.M. 2008 PG 5-10

VIRGINIA WATER DRIVE
(50' PUBLIC R/W)
B.M. 2008 PG 5-10



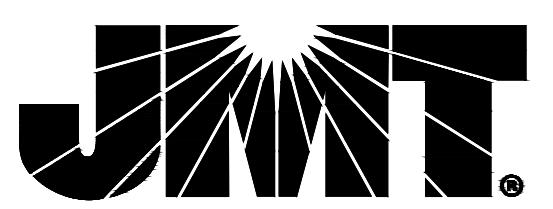
ZONING: R&PUD

③



- LEGEND**
- = FOUND MONUMENT AS NOTED
 - = SET IRON REBAR
 - = DIMENSION POINT (NOTHING SET)
 - ① = KEYNOTE - SEE PROPERTY OWNER TABLE
 - ① = KEYNOTE - SEE EXISTING EASEMENT TABLE
 - B.M. = BOOK OF MAPS
 - D.B. = DEED BOOK
 - R = PROPERTY LINE
 - R/W = RIGHT OF WAY
 - = BOUNDARY LINE
 - - - = RIGHT OF WAY LINE
 - - - = ADJOINING PROPERTY LINE
 - - - = EASEMENT LINE
 - ▨ = NEW ACCESS EASEMENT
 - ▨ = NEW DRAINAGE EASEMENT

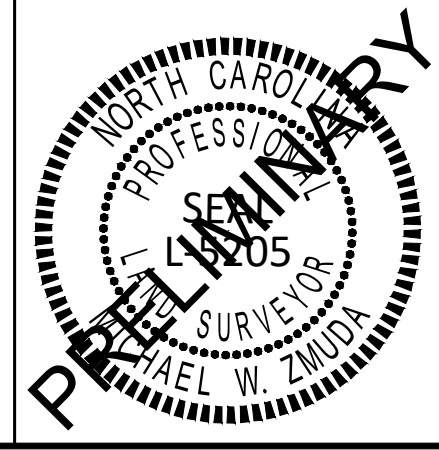
- PROPERTY OWNERS**
- ①
CARLTON GROUP OF NORTH CAROLINA, LLC
D.B. 17492 PG 1959
B.M. 2022 PG 1178-1179
PIN# 1758455024
ZONING: R&PUD
 - ②
CARLTON POINTE HOMEOWNERS ASSOCIATION INC
D.B. 18927 PG 691
B.M. 2008 PG 5-10
PIN# 1758445944
ZONING: R&PUD
 - ③
CARLTON POINTE HOMEOWNERS ASSOCIATION INC
D.B. 18927 PG 691
B.M. 2008 PG 5-10
PIN# 1758551729
ZONING: R&PUD



9201 ARBORETUM PARKWAY, SUITE 310 | RICHMOND, VA 23236
P: (804) 323-9900 | F: (804) 323-0596 | www.jmt.com

MATCH LINE - SEE SHEET 7

REVISION #	DATE	REASON FOR REVISION
FINAL SUBDIVISION PLAT		
WALLBROOK		
A DIVISION OF TRACT 'B' OF THE INTERMEDIATE SUBDIVISION PLAT RECORDED IN B.M. 2023 PG 1600-1602		
TOWN OF ROLESVILLE, WAKE COUNTY, NORTH CAROLINA		
DRAWN BY: JSZ	PROJECT #: FSP 24-22	
CHECKED BY: MWZ	CONTRACT#:	JMT#: 19-04194-011
PLAT DATE: 11/27/2024	SCALE: 1"=50'	SHEET 6 OF 8



CARLTON POINTE
PHASE 1
B.M. 2008 PG 5-10

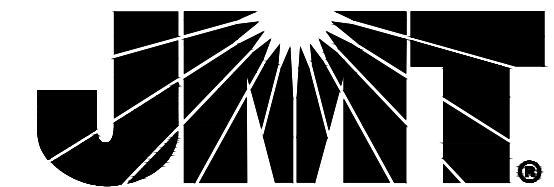
ZONING: R&PUD

WALLBROOK PLX LLC
D.B. 19463 PG 2024
B.M. 2024 PG 1692-1693
PIN# 1758453676
ZONING: GC-CZ

WAKE COUNTY BOARD
OF ALCOHOLIC CONTROL
DB 13588 PG 2155
B.M. 2008 PG 702
PIN# 1758453307

LINE	BEARING	DISTANCE
L1	N34°43'55"W	9.60'
L2	N84°45'09"W	6.38'
L3	S17°22'09"E	2.86'
L4	S82°01'45"E	4.21'
L5	N17°58'15"E	5.00'
L6	S17°58'15"W	0.95'
L7	N75°34'01"E	17.23'
L8	S26°33'22"W	18.48'
L9	N36°27'57"E	92.98'
L10	N27°12'33"E	99.47'
L11	N53°32'03"W	46.07'
L12	S85°19'27"W	25.08'
L13	N53°32'03"W	14.11'
L14	N36°27'57"E	48.00'
L15	N15°50'00"E	86.55'
L16	N88°07'56"W	142.65'
L17	N87°20'31"W	31.39'
L18	S35°54'17"W	46.79'
L19	N36°27'57"E	278.00'
L20	N86°12'25"E	116.06'
L21	S66°12'52"E	20.50'
L22	S53°32'03"E	48.00'
L23	S53°32'03"E	29.50'
L24	S76°28'28"E	69.55'
L25	N36°27'57"E	423.12'
L26	N53°32'03"W	192.16'
L27	N36°27'57"E	27.50'
L28	N36°27'57"E	27.50'
L29	S87°10'58"W	68.82'
L30	S87°10'58"W	271.38'
L31	S02°49'02"E	20.00'
L32	S44°15'13"E	6.45'
L33	S34°58'23"E	8.63'
L34	S00°44'47"W	9.34'
L35	N53°32'03"W	34.00'
L36	N53°32'03"W	37.07'
L37	N36°27'57"E	15.00'
L38	N28°58'19"W	26.46'
L39	N81°32'49"E	33.99'
L40	N53°32'03"W	23.00'
L41	S53°32'03"E	23.00'
L42	N29°48'41"E	30.20'
L43	N36°27'57"E	26.00'
L44	N31°48'45"E	43.14'
L45	N52°31'51"E	22.63'
L46	N36°27'57"E	32.00'
L47	N47°38'51"E	43.83'
L48	N52°31'51"E	22.63'
L49	S01°19'10"W	27.44'
L50	N88°40'50"W	30.00'
L51	N01°19'10"E	30.00'
L52	S82°36'48"W	19.19'
L53	N38°57'57"W	50.08'
L54	N26°33'22"E	9.86'
L55	N51°02'03"E	15.68'

CURVE	RADIUS	ARC LENGTH	CHORD LENGTH	CHORD BEARING	DELTA ANGLE
C1	114.00'	75.45'	74.08'	S17°30'15"W	37°55'23"
C2	4726.75'	170.44'	170.43'	S37°28'22"W	2°03'58"
C3	4726.75'	163.21'	163.20'	S37°25'44"W	1°58'42"
C4	4726.75'	7.23'	7.23'	S38°27'43"W	0°05'15"
C5	280.00'	139.05'	137.63'	S20°30'19"E	28°27'13"
C6	280.00'	27.81'	27.80'	S31°53'10"E	5°41'30"
C7	280.00'	111.24'	110.51'	S17°39'34"E	22°45'44"
C8	220.00'	107.36'	106.30'	S20°15'31"E	27°57'37"
C9	30.00'	35.20'	33.21'	S67°50'54"E	67°13'09"
C10	75.50'	136.19'	118.46'	S49°46'53"E	103°21'11"
C11	75.50'	41.47'	40.95'	S85°43'18"E	31°28'21"
C12	75.50'	81.47'	77.57'	S39°04'25"E	61°49'24"
C13	75.50'	13.25'	13.24'	S03°08'00"E	10°03'25"
C14	30.00'	28.98'	27.86'	S25°46'28"E	55°20'20"
C15	140.50'	70.10'	69.37'	N67°44'11"W	28°35'07"
C16	20.50'	28.62'	26.35'	S57°58'15"W	80°00'00"
C17	40.00'	36.79'	35.51'	N08°22'35"W	52°41'41"
C18	75.50'	56.38'	55.07'	N13°19'57"W	42°46'57"
C19	30.00'	24.69'	24.00'	N15°31'15"W	47°09'31"
C20	280.00'	160.40'	158.21'	N22°41'21"W	32°49'18"
C21	220.00'	98.66'	97.84'	N19°07'33"W	25°41'43"
C22	270.00'	72.84'	72.61'	S44°11'38"W	15°27'22"
C23	48.00'	19.81'	19.67'	S63°44'40"W	23°38'42"
C24	98.00'	37.52'	37.29'	N37°31'31"E	21°56'17"
C25	320.00'	67.18'	67.06'	N42°28'48"E	12°01'42"
C26	114.00'	55.30'	54.76'	N22°34'07"E	27°47'40"
C27	86.00'	56.26'	55.26'	N17°43'33"E	37°28'49"
C28	4.00'	6.31'	5.67'	N08°21'24"W	90°21'12"
C29	15.00'	23.56'	21.21'	N08°32'03"W	90°00'00"
C30	10.00'	15.71'	14.14'	N08°32'03"W	90°00'00"
C31	15.00'	23.56'	21.21'	S81°27'57"W	90°00'00"
C32	15.00'	23.56'	21.21'	S08°32'03"E	90°00'00"
C33	318.00'	89.16'	88.87'	N44°29'54"E	16°03'54"
C34	282.00'	79.07'	78.81'	N44°29'54"E	16°03'54"
C35	75.50'	24.67'	24.56'	N60°37'25"W	18°43'24"
C36	75.50'	36.35'	36.00'	N37°28'09"W	27°35'08"
C37	75.50'	20.44'	20.38'	N15°55'09"W	15°30'53"
C38	75.50'	24.96'	24.84'	S88°00'45"W	18°56'26"
C39	75.50'	16.51'	16.48'	N76°15'05"W	12°31'56"
C40	75.50'	75.64'	72.52'	N41°17'01"W	57°24'12"
C41	75.50'	5.82'	5.82'	N10°22'19"W	4°25'12"



9201 ARBORETUM PARKWAY, SUITE 310 | RICHMOND, VA 23236
P: (804) 323-9900 | F: (804) 323-0596 | www.jmt.com

REVISION #	DATE	REASON FOR REVISION
FINAL SUBDIVISION PLAT WALLBROOK A DIVISION OF TRACT 'B' OF THE INTERMEDIATE SUBDIVISION PLAT RECORDED IN B.M. 2023 PG 1600-1602 TOWN OF ROLESVILLE, WAKE COUNTY, NORTH CAROLINA		
DRAWN BY: JSZ	PROJECT #: FSP 24-22	
CHECKED BY: MWZ	CONTRACT#:	JMT#: 19-04194-011
PLAT DATE: 11/27/2024	SCALE: 1"=50'	SHEET 8 OF 8

