

HILLS AT HARRIS CREEK

PRELIMINARY SUBDIVISION PLAT V3-PSP-24-03

SITE INFORMATION:

LOCATION: 0 - 5326 MITCHELL MILL ROAD
 COUNTY: WAKE COUNTY
 PARENT PIN: 1757758529, 1757761273, 1757778982, 1757750520
 DB/PG: 001318 / 000333
 ZONING: RM-CZ CLUSTER DEVELOPMENT
 GROSS ACREAGE: 5,029,513 SF (115.45 AC)
 25' ROW DEDICATION ACREAGE: 43,196 SF (0.99 AC)
 NET ACREAGE: 4,986,317 SF (114.47 AC)

MINIMUM BUILDING SETBACKS:
 FRONT YARD: 20'
 SIDE YARD: 10'
 REAR YARD: 20'
 CORNER YARD: 12'

RIGHT OF WAY & OTHER AREAS:
 NATURAL WETLANDS: 657,515 SF (15.09 AC)

MAXIMUM ALLOWED NUMBER OF LOTS: 225 LOTS
TOTAL NUMBER PROPOSED LOTS: 220 LOTS
MINIMUM LOT FRONTAGE: 50'
MINIMUM REQUIRED LOT SIZE: 8,000 SF

OPEN SPACE BREAKDOWN:
 PROPERTY BOUNDARY: 4,986,317 SF (114.47 AC)
 REQUIRED OPEN SPACE(SECTION 3.1.B.1): 1,994,527 SF (45.79 AC)
 PROVIDED OPEN SPACE: 2,235,966 SF (51.33 AC)
 CLUSTER OPTION OPEN SPACE CALCULATIONS: SEE SHEET C-1.3
 ACTIVE/PASSIVE OPEN SPACE CALCULATIONS: SEE SHEET C-1.4

IMPERVIOUS AREAS:
 ROADWAYS & SIDEWALKS: 518,299 SF (11.90 AC)
 PONDS: 115,743 SF (2.65 AC)
 BUILD UPON AREA (BUA): 961,315 SF (22.07 AC)
 TOTAL ON-SITE IMPERVIOUS AREA: 1,595,357 SF (36.62 AC)
 TOTAL ON-SITE IMPERVIOUS PERCENT: 31.99%

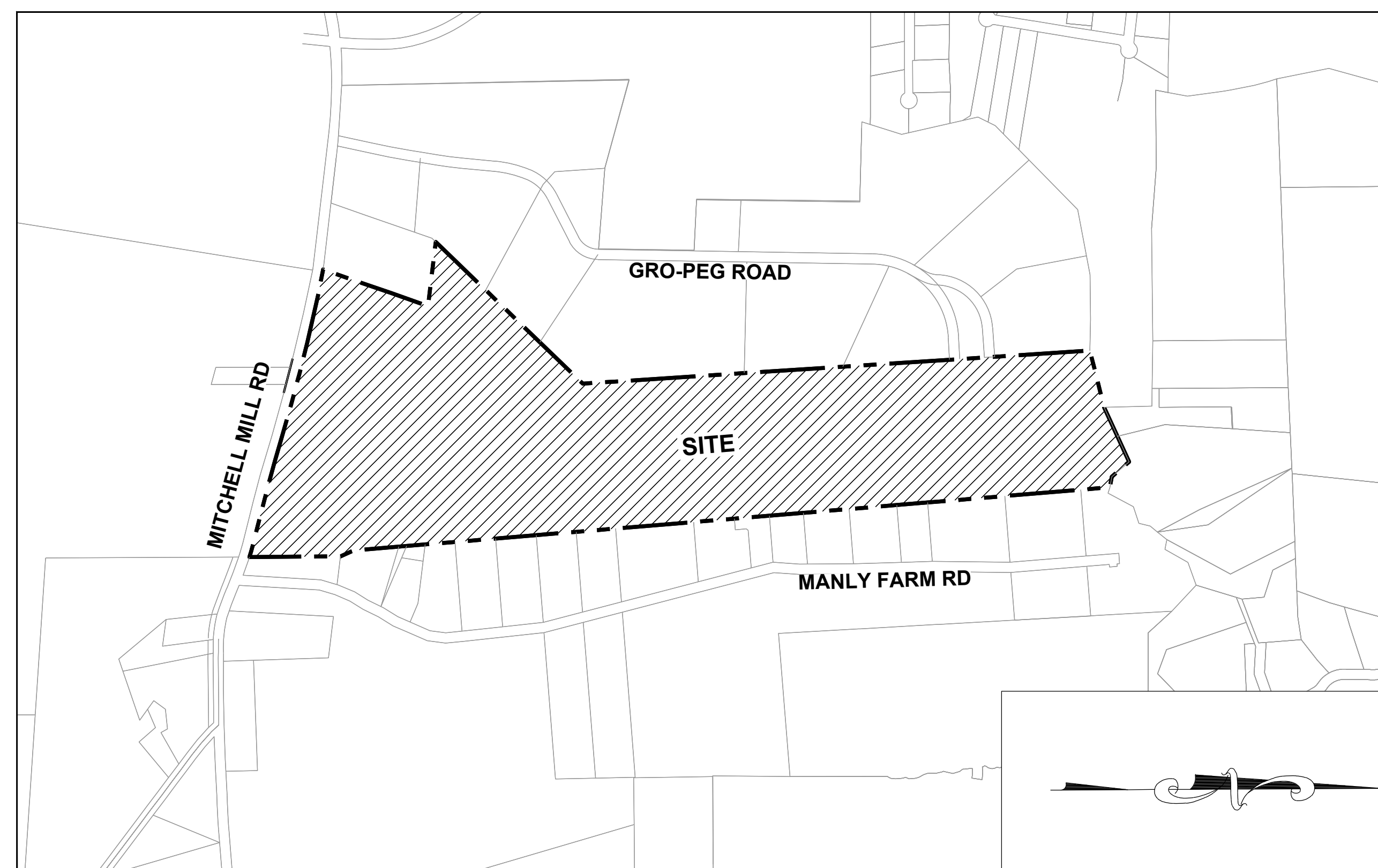
CURRENT & PROPOSED USE AREAS:
 CURRENT USE: WAKE COUNTY AGRICULTURAL
 PROPOSED USE: MEDIUM DENSITY RESIDENTIAL

WATERSHED, RIVER BASIN:
 THIS PROJECT IS LOCATED WITHIN THE NEUSE RIVER BASIN

LOT ACREAGE: DSF:
 LOT TYPE (50'x160'): 68 LOTS
 LOT TYPE (55'x146'): 16 LOTS
 LOT TYPE (60'x134'): 56 LOTS
 LOT TYPE (65'x125'): 52 LOTS
 LOT TYPE (70'x115'): 15 LOTS
 LOT TYPE (80'x100'): 13 LOTS
TOTAL NUMBER PROPOSED LOTS: 220 LOTS
MINIMUM PROPOSED LOT SIZE: 8,000 SF
MAXIMUM PROPOSED LOT SIZE: 26,427 SF
MINIMUM LOT WIDTH: 50'
PROPOSED DENSITY: 1.92 UNITS/AC

DISTURBED AREA:
TOTAL DISTURBED AREA: 3,639,480 SF (83.55 AC)

TOWN OF ROLESVILLE, WAKE COUNTY, NORTH CAROLINA
 PROJECT NUMBER: PSP-24-03



VICINITY MAP
 1" = 600'

STREET NAMES	PROPOSED ROW	PAVEMENT WIDTH	LINEAR FEET
BOULDER MILL DRIVE	50-70 Ft	24-32 Ft	2,849.76
SLATE SPRINGS STREET	50 Ft	24 Ft	1,253.58
PLUTON RIDGE DRIVE	50-60 Ft	24-32 Ft	1,687.62
IGNEOUS STREET	50 Ft	24 Ft	1,072.02
MILLPOND BLUFF DRIVE	50 Ft	24 Ft	1,047.13
FLATROCK RIDGE STREET	62 Ft	36 Ft	849.40
MAGMA CHAMBER WAY	50 Ft	24 Ft	1,154.99
LAVA STREET	50 Ft	24 Ft	324.52
LIMESTONE WALL LANE	50 Ft	24 Ft	2,271.75
PRIVATE OFF-SITE DRIVEWAY 1	20 Ft	13 Ft	213.11
PRIVATE OFF-SITE DRIVEWAY 2	20 Ft	13 Ft	191.35

OWNER:
 ALAN&RANDY WATKINS//LAURA AND RANDALL WATKINS//
 ELLIS LAND INVESTMENT COMPANY, LLC
 ADDRESS: 305 CHURCH AT NORTH HILLS STREET, SUITE 1110
 CITY/STATE/ZIP: RALEIGH, NC 27609
 PHONE: 919-824-6088
 EMAIL: jason@ellisdevgroup.com.

DEVELOPER:
 ELLIS DEVELOPMENTS NC, LLC
 CONTACT NAME: JASON PFISTER
 ADDRESS: 305 CHURCH AT NORTH HILLS STREET, SUITE 1110
 CITY/STATE/ZIP: RALEIGH, NC 27609
 PHONE: 919-824-6088
 EMAIL: jason@ellisdevgroup.com.

CIVIL ENGINEERING:
 STRONG ROCK ENGINEERING GROUP, PLLC
 PO BOX 55992
 RALEIGH, NC 27624
 COMPANY LICENSE #: P-2166
 PHONE: 984-200-1932 (O)
 information@strongrockgroup.com

SHEET INDEX	NO.	DESCRIPTION
01	C-1.0	COVER SHEET
02	C-1.1	ZONING CONDITIONS
03	C-1.2	CONCEPT SKETCH PLAN
04	C-2.0	CIVIL NOTES
05	C-3.0	EXISTING CONDITIONS PLAN
06	C-3.1	TREE PROTECTION PLAN
07	C-3.2	OVERALL TREE INVENTORY MAP
08	C-3.3	PARTIAL TREE INVENTORY MAP I
09	C-3.4	PARTIAL TREE INVENTORY MAP II
10	C-3.5	PARTIAL TREE INVENTORY MAP III
11	C-3.6	PARTIAL TREE INVENTORY MAP IV
12	C-3.7	PARTIAL TREE INVENTORY MAP V
13	C-3.8	PARTIAL TREE INVENTORY MAP VI
14	C-3.9	PARTIAL TREE INVENTORY MAP VII
15	C-3.10	PARTIAL TREE INVENTORY MAP VIII
16	C-3.11	TREE INVENTORY TABLE
17	C-4.0	DEMOLITION PLAN
18	C-5.0	OVERALL OPEN SPACE PLAN
19	C-5.1	PASSIVE & ACTIVE OPEN SPACE REQUIREMENTS
20	C-6.0	OVERALL SITE PLAN
21	C-6.1	PARTIAL SITE PLAN I
22	C-6.2	PARTIAL SITE PLAN II
23	C-6.3	PARTIAL SITE PLAN III
24	C-6.4	PARTIAL SITE PLAN IV
25	C-6.5	PARTIAL SITE PLAN V
26	C-6.6	PARTIAL SITE PLAN VI
27	C-6.7	LOT SIZE TABLES
28	C-7.0	OVERALL UTILITY PLAN
29	C-7.1	PARTIAL UTILITY PLAN I
30	C-7.2	PARTIAL UTILITY PLAN II
31	C-7.3	PARTIAL UTILITY PLAN III
32	C-7.4	PARTIAL UTILITY PLAN IV
33	C-7.5	PARTIAL UTILITY PLAN V
34	C-7.6	PARTIAL UTILITY PLAN VI
35	C-7.7	PARTIAL UTILITY PLAN VII - OFF SITE
36	C-7.8	SANITARY SEWER TABLES
37	C-8.0	OVERALL GRADING & DRAINAGE PLAN
38	C-8.1	PARTIAL GRADING & DRAINAGE PLAN I
39	C-8.2	PARTIAL GRADING & DRAINAGE PLAN II
40	C-8.3	PARTIAL GRADING & DRAINAGE PLAN III
41	C-8.4	PARTIAL GRADING & DRAINAGE PLAN IV
42	C-8.5	PARTIAL GRADING & DRAINAGE PLAN V
43	C-8.6	PARTIAL GRADING & DRAINAGE PLAN VI
44	C-8.7	STORM DRAINAGE TABLES
45	C-8.8	STORM DRAINAGE TABLES
46	C-9.0	OVERALL LANDSCAPE PLAN
47	C-9.1	PERIMETER BUFFER PLAN
48	C-9.2	PARTIAL LANDSCAPE PLAN I
49	C-9.3	PARTIAL LANDSCAPE PLAN II
50	C-9.4	PARTIAL LANDSCAPE PLAN III
51	C-9.5	PARTIAL LANDSCAPE PLAN IV
52	C-9.6	PARTIAL LANDSCAPE PLAN V
53	C-9.7	PARTIAL LANDSCAPE PLAN VI
54	C-10.0	OVERALL PRESERVATION PLAN
55	C-10.1	PRESERVATION PLAN I
56	C-10.2	PRESERVATION PLAN II
57	C-10.3	PRESERVATION PLAN III
58	C-10.4	PRESERVATION PLAN IV
59	C-10.5	PRESERVATION PLAN V
60	C-10.6	PRESERVATION PLAN VI
61	C-10.7	PRESERVATION TABLE
62	C-11.0	OVERALL FIRE PLAN
63	C-11.1	FIRE PLAN I
64	C-11.2	FIRE PLAN II
65	C-11.3	FIRE PLAN III
66	D-1.0	SITE DETAILS

CONDITIONS OF APPROVAL:
 1. UTILITIES CONSTRUCTED BY OTHERS MUST BE INSTALLED, INSPECTED, AND ACCEPTED BY RALEIGH PRIOR TO RECORDATION OF THE LOTS WITHIN THIS PROJECT. IF THESE UTILITIES ARE NOT CONSTRUCTED BY OTHERS, THIS PROJECT IS RESPONSIBLE FOR THE EXTENSIONS TO SUPPORT THIS PROJECT'S DEVELOPMENT.
 2. A WATER MODEL IS REQUIRED TO BE COMPLETED BY THE PROJECT ENGINEER TO DEMONSTRATE THAT THE PROPOSED WATER LINE EXTENSION WILL PROVIDE ADEQUATE FIRE FLOW AND PRESSURE FOR THE PROPOSED DEVELOPMENT.
 3. THIS DEVELOPMENT IS CONTINGENT UPON THE COMPLETION OF THE "HARRIS CREEK SANITARY SEWER REPLACEMENT S-5037" PERMIT. THE SEWER REPLACEMENT IMPROVEMENTS SHALL BE INSTALLED, INSPECTED, AND ACCEPTED BY CITY OF RALEIGH PRIOR TO RECORDATION OF LOTS FOR THIS DEVELOPMENT.
 4. ALL OFFSITE SEWER EASEMENTS MUST BE APPROVED, SIGNED AND RECORDED WITH RALEIGH DEED TEMPLATE PRIOR TO CD APPROVAL.

NOTES:
 1. SEE SHEET C-1.1 FOR ZONING CONDITIONS.
 2. THIS SUBDIVISION SHALL BE DEVELOPED AND RECORDED IN A SINGLE PHASE; THERE IS NO PHASING PLAN.

THIS PLANSET AND ANY ASSOCIATED DOCUMENTS ARE PRELIMINARY AND NOT AUTHORIZED FOR CONSTRUCTION UNTIL SIGNED, DATED, AND OFFICIALLY RELEASED FOR CONSTRUCTION BY THE ENGINEER OF RECORD.



STRONG ROCK ENGINEERING GROUP
 305 CHURCH AT NORTH HILLS STREET, SUITE 1110 RALEIGH, NC 27609 | INFORMATION@STRONGROCKGROUP.COM

STRONG ROCK PROJECT: HILLS AT HARRIS CREEK
 NOT FOR CONSTRUCTION: []
 SCALE: AS SHOWN []
 DESIGNED BY: JWL []
 DRAWN BY: SRG []
 CHECKED BY: JWL []

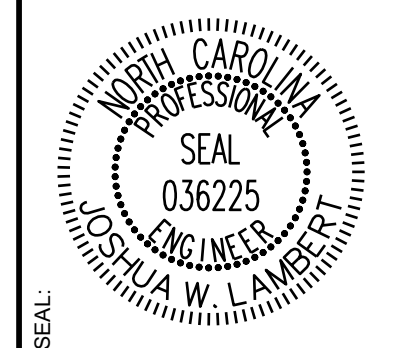
TOWN OF ROLESVILLE, WAKE COUNTY, NORTH CAROLINA
 PRELIMINARY SUBDIVISION PLAT
 COVER SHEET

DRAWING SHEET
 C-1.0
 01 OF 66

REVISIONS

No.	DATE	BY
0	05/30/2024	
1	08/30/2024	
2	11/01/2024	

ISREC	NO.	DATE	BY
0	TOWN OF ROLESVILLE V1-FSP-24-03	05/30/2024	
1	TOWN OF ROLESVILLE V2-FSP-24-03	08/30/2024	
2	TOWN OF ROLESVILLE V3-FSP-24-03	11/01/2024	



STRONGROCK

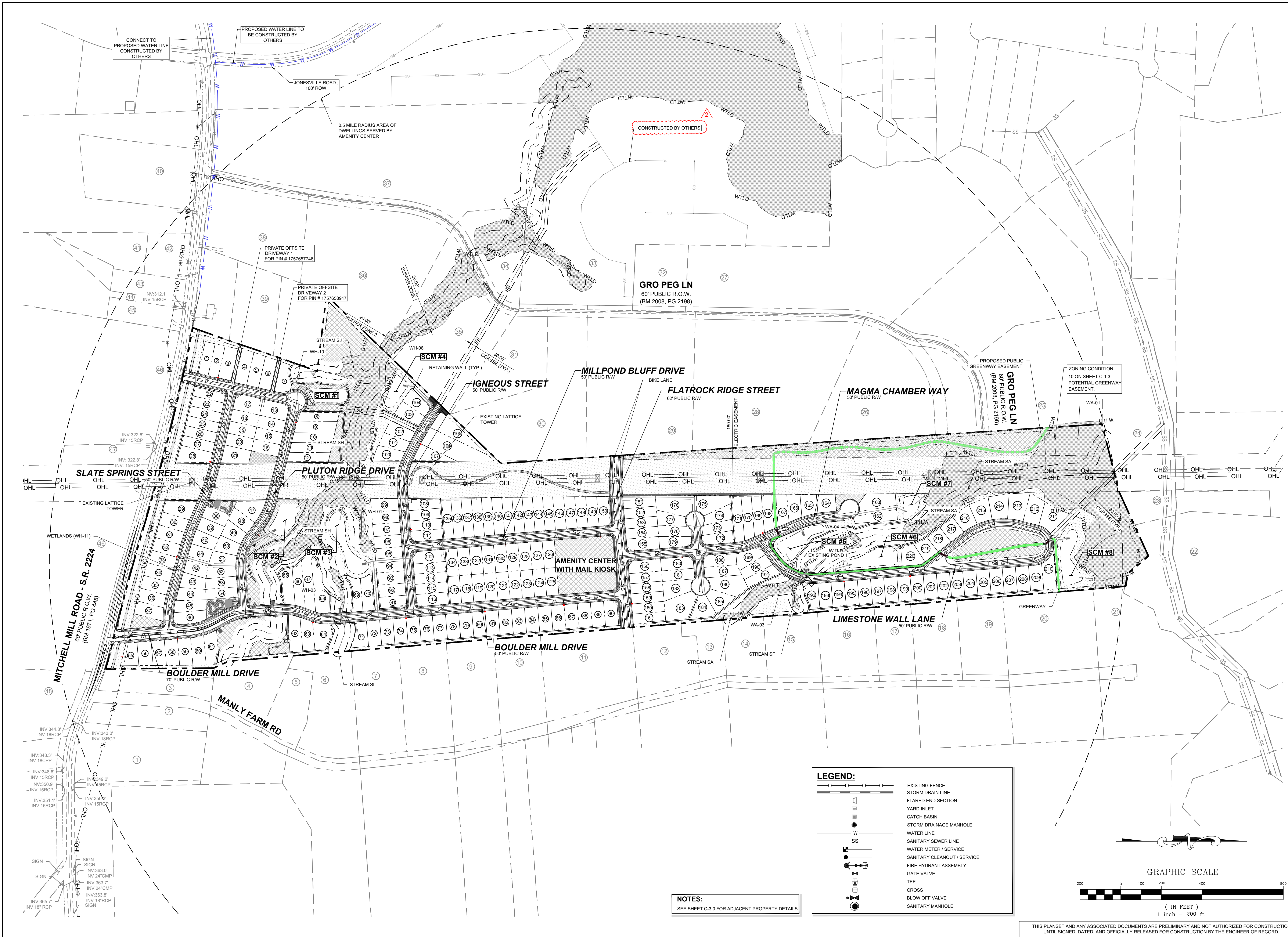
ENGINEERING GROUP

STRONG ROCK ENGINEERING GROUP, PLLC | COMPANY LICENSE # P-2166
305 CHURCH AT NORTH HILLS STREET, SUITE 1110 RALEIGH, NC 27609 | INFORMATION@STRONGROCKGROUP.COM

STRONG ROCK PROJECT	NOT FOR CONSTRUCTION	SCALE	DESIGNED BY	DRAWN BY	CHECKED BY
		AS SHOWN	JWL	SRG	JWL

HILLS AT HARRIS CREEK
TOWN OF ROLESVILLE, WAKE COUNTY, NORTH CAROLINA
PRELIMINARY SUBDIVISION PLAT
OVERALL UTILITY PLAN

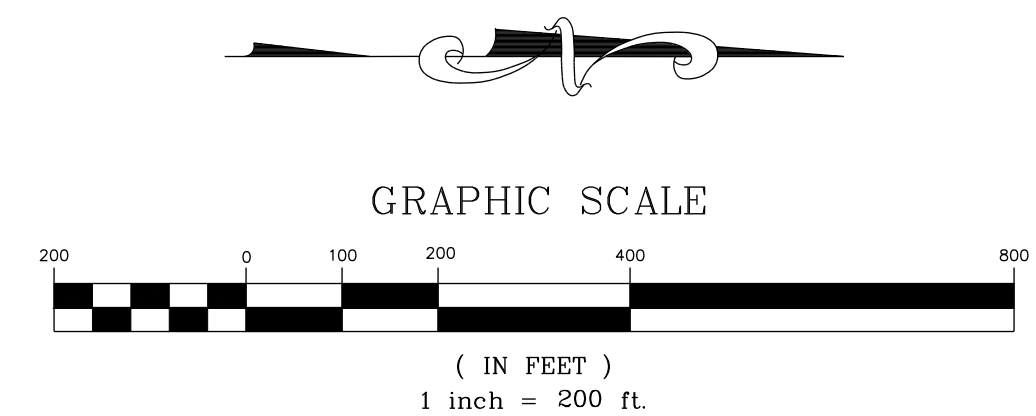
DRAWING SHEET
C-7.0
28 OF 66



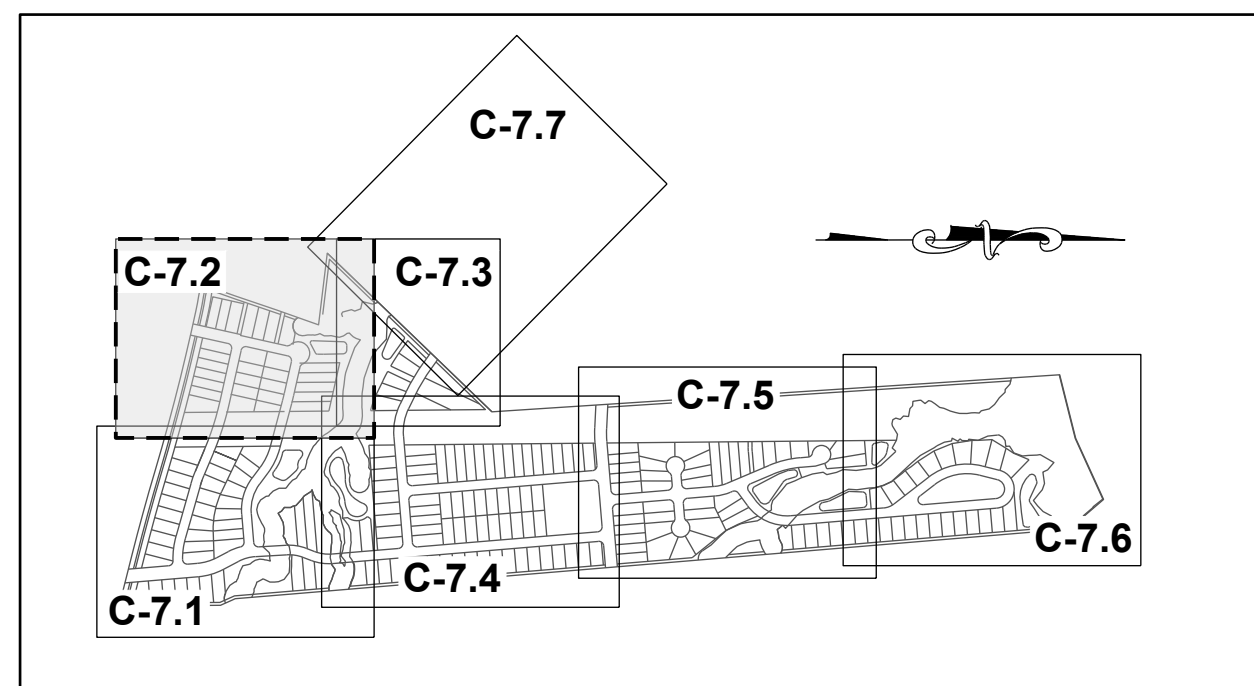
NOTES:
SEE SHEET C-3.0 FOR ADJACENT PROPERTY DETAILS

LEGEND:

	EXISTING FENCE
	STORM DRAIN LINE
	FLARED END SECTION
	YARD INLET
	CATCH BASIN
	STORM DRAINAGE MANHOLE
	WATER LINE
	SANITARY SEWER LINE
	WATER METER / SERVICE
	SANITARY CLEANOUT / SERVICE
	FIRE HYDRANT ASSEMBLY
	GATE VALVE
	TEE
	CROSS
	BLOW OFF VALVE
	SANITARY MANHOLE



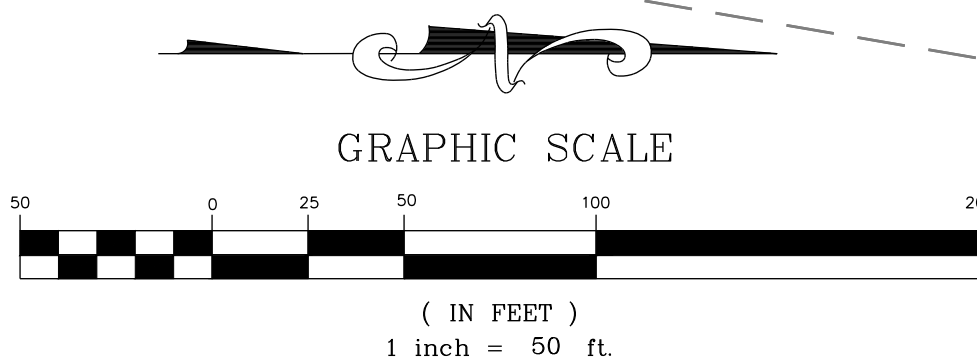
THIS PLANSET AND ANY ASSOCIATED DOCUMENTS ARE PRELIMINARY AND NOT AUTHORIZED FOR CONSTRUCTION UNTIL SIGNED, DATED, AND OFFICIALLY RELEASED FOR CONSTRUCTION BY THE ENGINEER OF RECORD.



SITE KEY PLAN

LEGEND:

SEE SHEET C-7.0 FOR LEGEND.



N/F
UTILITY THREE BUILDERS INC
PIN: 1757646703
DB: 18226 PG: 2104
BM: 1981 PG: 895
ZONING: R-30 (WC) USE: SF

N/F
WILLIE RAY SUTTON
AND WIFE, PAMELA
Z. SUTTON
PIN: 1757657280
DB: 2958 PG: 536
BM: 1981 PG: 294
ZONING: R-30 (WC)
USE: SF

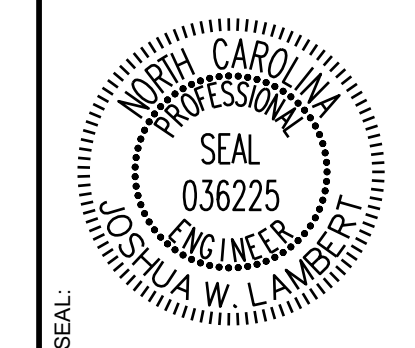
N/F
PREDDY, GENADIUS MAC PREDDY, MATTIE F
PIN: 1757656586
DB: 1882 PG: 342
ZONING: R-30 (WC) USE: S

N/F
SOUTHVIEW INVESTMENT LLC
PIN: 1757738451
DB: 19248 PG: 2000
ZONING: R-30 (WC) USE: SF

N/F
HAMPTON, MELODY L
PIN: 1757754163
DB: 4777 PG: 764
BM: 1990 PG: 511
ZONING: R-30 (WC) USE: SF



NO.	REVISIONS	DATE	BY
0			
1			
2			



STRONGROCK
ENGINEERING GROUP

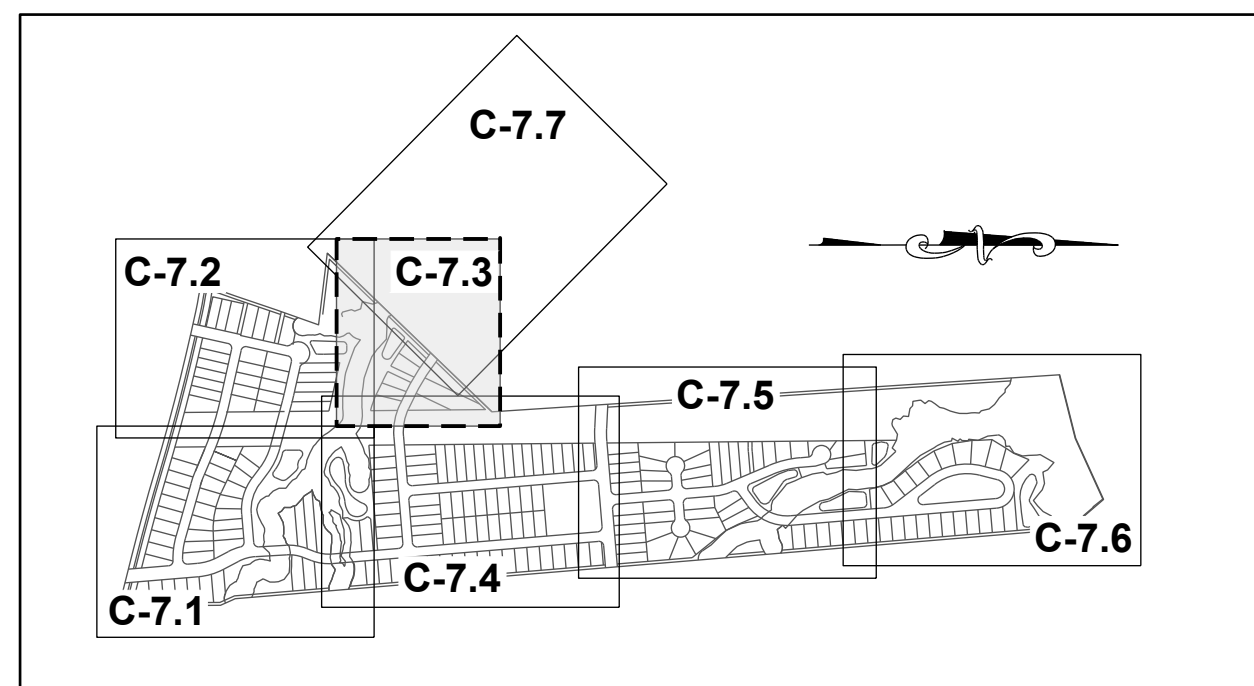
STRONG ROCK ENGINEERING GROUP, PLLC | COMPANY LICENSE # P-2166
305 CHURCH AT NORTH HILLS STREET, SUITE 1110 RALEIGH, NC 27609 | INFORMATION@STRONGROCKGROUP.COM

STRONG ROCK PROJECT	NOT FOR CONSTRUCTION	SCALE	DESIGNED BY	DRAWN BY	CHECKED BY
	AS SHOWN		JWL	SRG	JWL

HILLS AT HARRIS CREEK
TOWN OF ROLESVILLE, WAKE COUNTY, NORTH CAROLINA
PRELIMINARY SUBDIVISION PLAT
PARTIAL UTILITY PLAN II

DRAWING SHEET
C-7.2

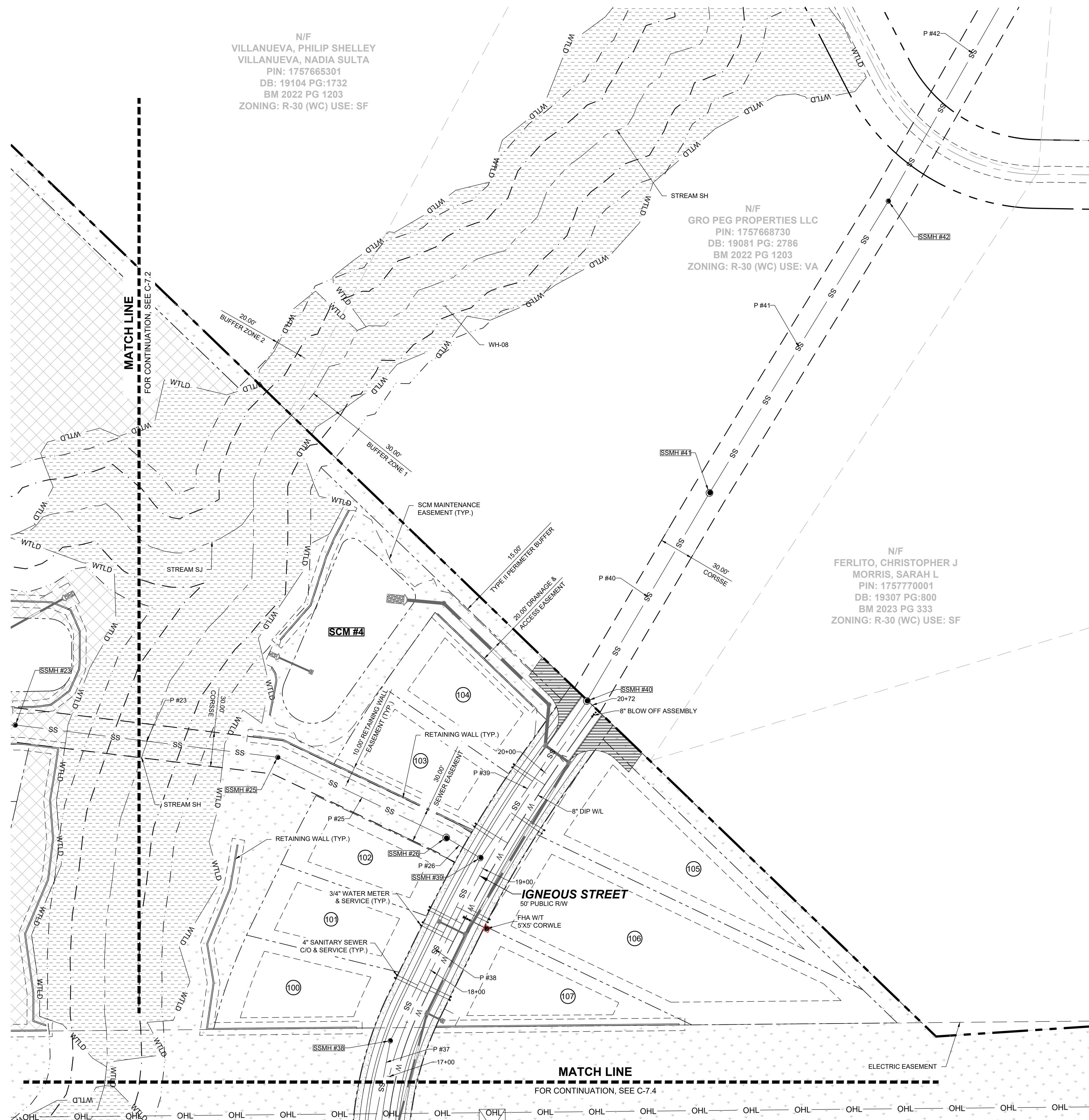
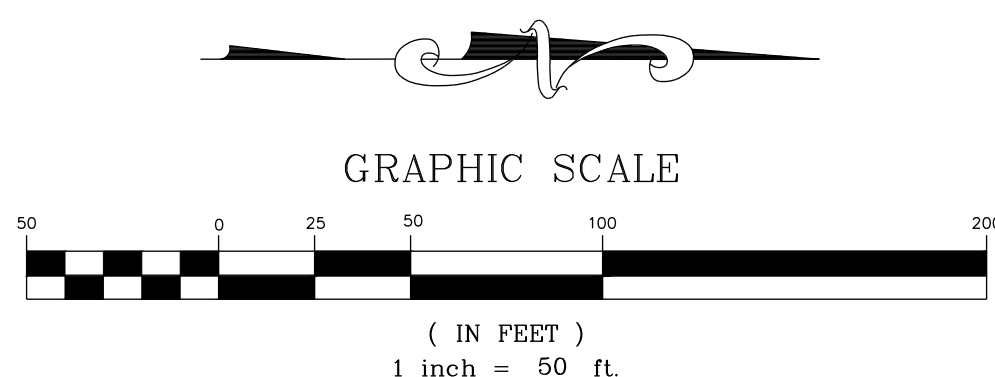
THIS PLANSET AND ANY ASSOCIATED DOCUMENTS ARE PRELIMINARY AND NOT AUTHORIZED FOR CONSTRUCTION UNTIL SIGNED, DATED, AND OFFICIALLY RELEASED FOR CONSTRUCTION BY THE ENGINEER OF RECORD.



SITE KEY PLAN

LEGEND:

SEE SHEET C-7.0 FOR LEGEND.

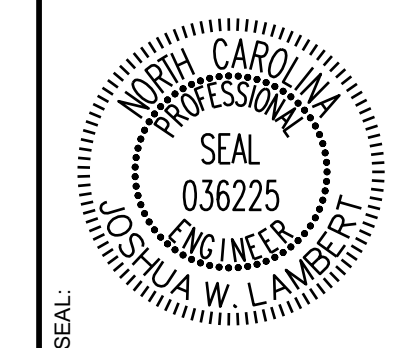


N/F
VILLANUEVA, PHILIP SHELLEY
VILLANUEVA, NADIA SULTA
PIN: 1757665301
DB: 19104 PG:1732
BM 2022 PG 1203
ZONING: R-30 (WC) USE: SF

N/F
GRO PEG PROPERTIES LLC
PIN: 1757668730
DB: 19081 PG: 2786
BM 2022 PG 1203
ZONING: R-30 (WC) USE: VA

N/F
FERLITO, CHRISTOPHER J
MORRIS, SARAH L
PIN: 1757770001
DB: 19307 PG:800
BM 2023 PG 333
ZONING: R-30 (WC) USE: SF

NO.	REVISIONS	DATE	BY
0			
1			
2			



STRONGROCK
ENGINEERING GROUP

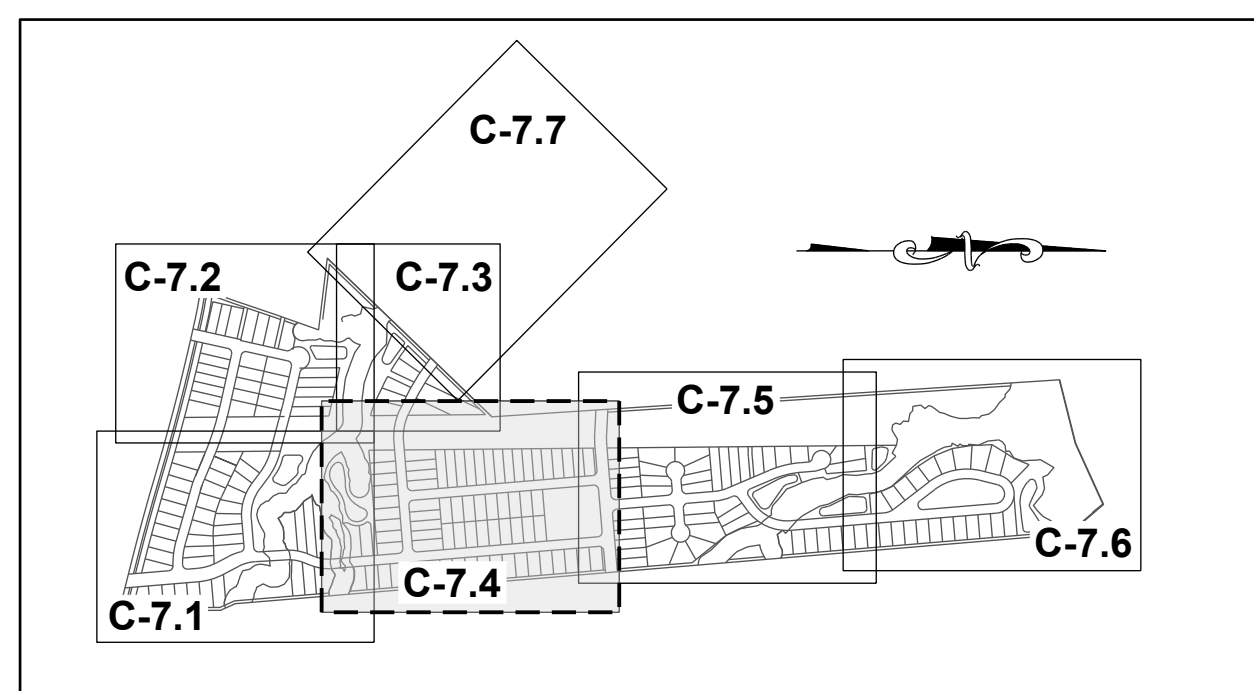
STRONG ROCK ENGINEERING GROUP, PLLC | COMPANY LICENSE # P-2166
305 CHURCH AT NORTH HILLS STREET, SUITE 1110 RALEIGH, NC 27609 | INFORMATION@STRONGROCKGROUP.COM

STRONG ROCK PROJECT	NOT FOR CONSTRUCTION	SCALE AS SHOWN	DESIGNED BY JWL	DRAWN BY SRG	CHECKED BY JWL
---------------------	----------------------	----------------	-----------------	--------------	----------------

HILLS AT HARRIS CREEK
TOWN OF ROLESVILLE, WAKE COUNTY, NORTH CAROLINA
PRELIMINARY SUBDIVISION PLAT
PARTIAL UTILITY PLAN III

DRAWING SHEET
C-7.3

THIS PLANSET AND ANY ASSOCIATED DOCUMENTS ARE PRELIMINARY AND NOT AUTHORIZED FOR CONSTRUCTION UNTIL SIGNED, DATED, AND OFFICIALLY RELEASED FOR CONSTRUCTION BY THE ENGINEER OF RECORD.



SITE KEY PLAN

LEGEND:

SEE SHEET C-7.0 FOR LEGEND.



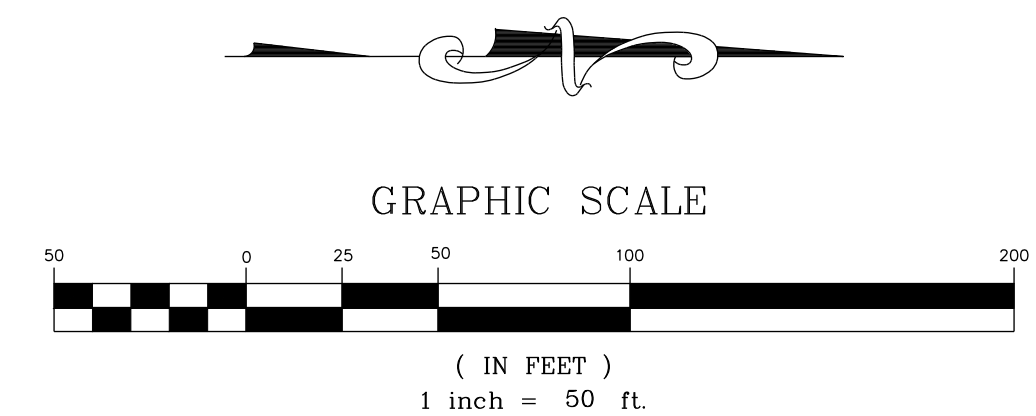
N/F
HERNADEZ, JUANITA
PIN: 1757866385
DB: 19332 PG: 1806
BM 1990 PG 132
ZONING: R-30 (WC) USE: MO

N/F
GOLD, SHARIE
PIN: 1757866660
DB: PG:
BM 1990 PG 00623
ZONING: R-30 (WC) USE: SF

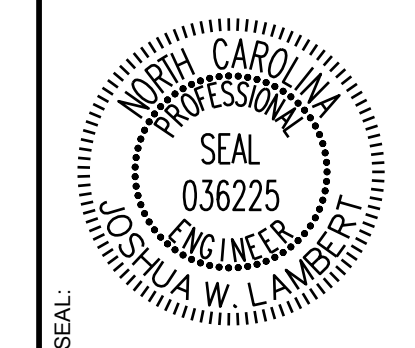
N/F
LEFRANCOIS CONSTRUCTION CO INC
PIN: 1757866852
DB: 18468 PG: 2535
BM 2002 PG 352
ZONING: R-30 (WC) USE: VA

N/F
LEFRANCOIS, MICHAEL L LEFRANCOIS, TONIA
PIN: 1757876015
DB: 14356 PG: 1438
BM 2002 PG 352
ZONING: R-30 (WC) USE: SF

N/F
BEATTIE, LENORA M
PIN: 1757875349
DB: 07-E PG: 2834
ZONING: R-30 (WC) USE: SF



NO.	REVISIONS	DATE	BY



STRONGROCK
ENGINEERING GROUP

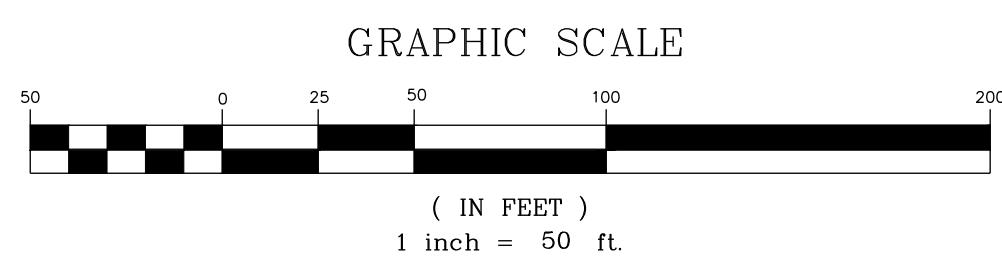
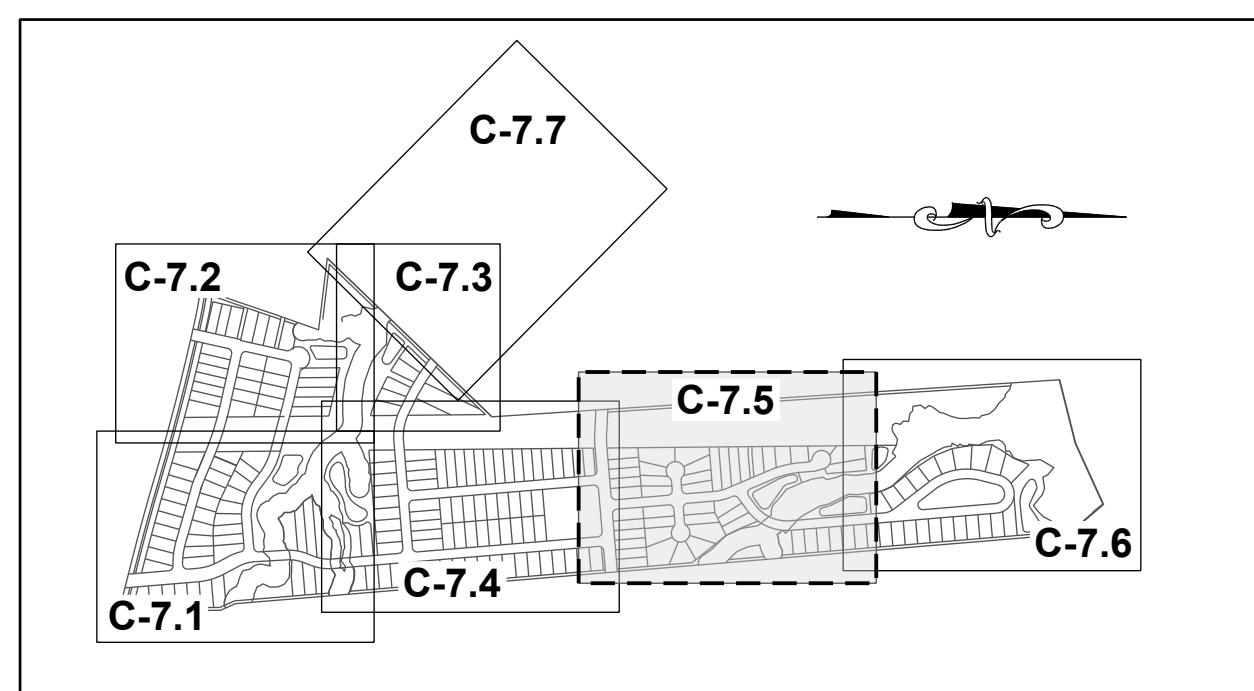
STRONG ROCK ENGINEERING GROUP, PLLC | COMPANY LICENSE # P-2166
305 CHURCH AT NORTH HILLS STREET, SUITE 1110 RALEIGH, NC 27609 | INFORMATION@STRONGROCKGROUP.COM

STRONG ROCK PROJECT	NOT FOR CONSTRUCTION	SCALE AS SHOWN	DESIGNED BY	DRAWN BY	CHECKED BY
			JWL	SRG	JWL

HILLS AT HARRIS CREEK
TOWN OF ROLESVILLE, WAKE COUNTY, NORTH CAROLINA
CONSTRUCTION PLANS
PARTIAL UTILITY PLAN IV

DRAWING SHEET
C-7.4

THIS PLANSET AND ANY ASSOCIATED DOCUMENTS ARE PRELIMINARY AND NOT AUTHORIZED FOR CONSTRUCTION UNTIL SIGNED, DATED, AND OFFICIALLY RELEASED FOR CONSTRUCTION BY THE ENGINEER OF RECORD.



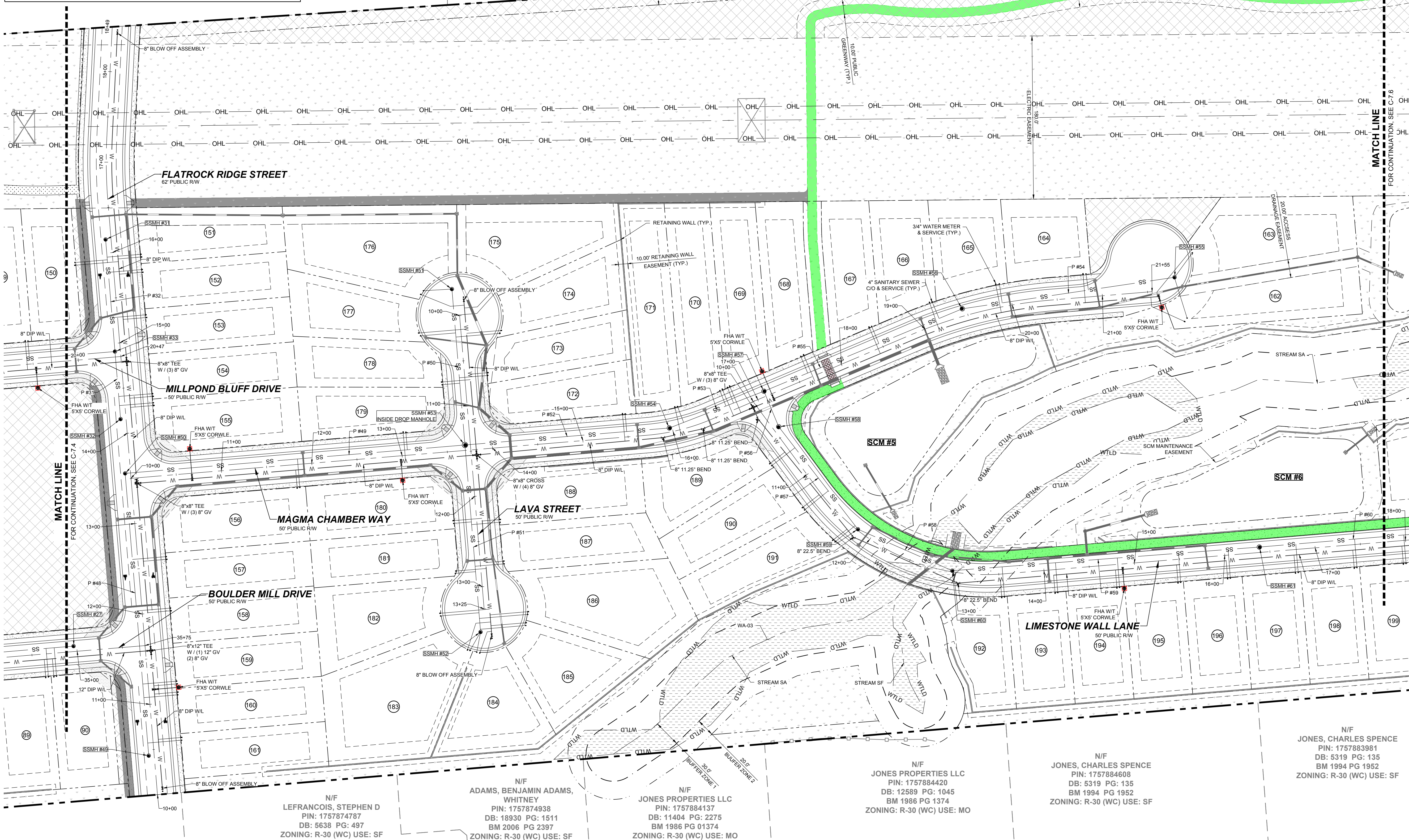
SITE KEY PLAN

LEGEND:

SEE SHEET C-7.0 FOR LEGEND.

N/F
 CARLE, SCOTT CARLE, THERESA
 PIN: 1757780258
 DB: 14863 PG: 2493
 BM 2008 PG 2198
 ZONING: R-30 (WC) USE: SF

N/F
 CARLE, SCOTT CARLE, THERESA
 PIN: 1757781960
 DB: 14863 PG: 2493
 BM 2009 PG 645
 ZONING: R-30 (WC) USE: VA



N/F
 LEFRANCOIS, STEPHEN D
 PIN: 1757874787
 DB: 5638 PG: 497
 ZONING: R-30 (WC) USE: SF

N/F
 ADAMS, BENJAMIN ADAMS,
 WHITNEY
 PIN: 1757874938
 DB: 18930 PG: 1511
 BM 2006 PG 2397
 ZONING: R-30 (WC) USE: SF

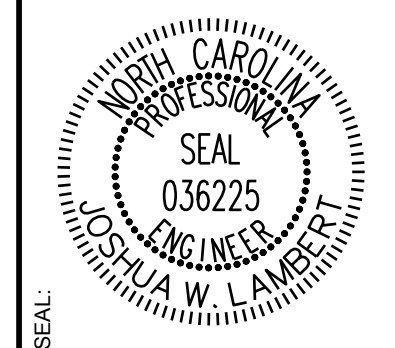
N/F
 JONES PROPERTIES LLC
 PIN: 1757884137
 DB: 11404 PG: 2275
 BM 1986 PG 01374
 ZONING: R-30 (WC) USE: MO

N/F
 JONES PROPERTIES LLC
 PIN: 1757884420
 DB: 12589 PG: 1045
 BM 1986 PG 1374
 ZONING: R-30 (WC) USE: MO

N/F
 JONES, CHARLES SPENCE
 PIN: 1757884608
 DB: 5319 PG: 135
 BM 1994 PG 1952
 ZONING: R-30 (WC) USE: SF

N/F
 JONES, CHARLES SPENCE
 PIN: 1757883981
 DB: 5319 PG: 135
 BM 1994 PG 1952
 ZONING: R-30 (WC) USE: SF

NO.	REVISIONS	DATE	BY



STRONGROCK
 ENGINEERING GROUP

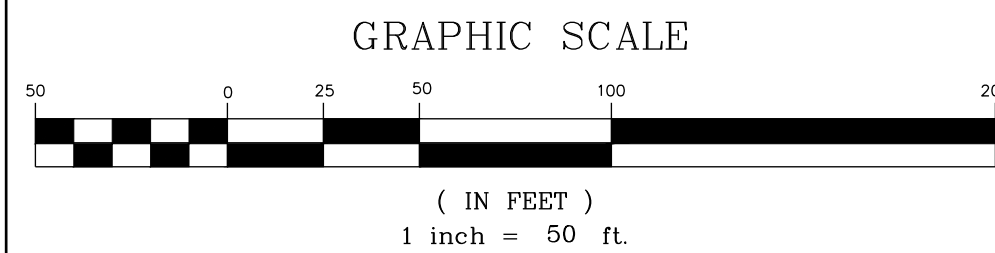
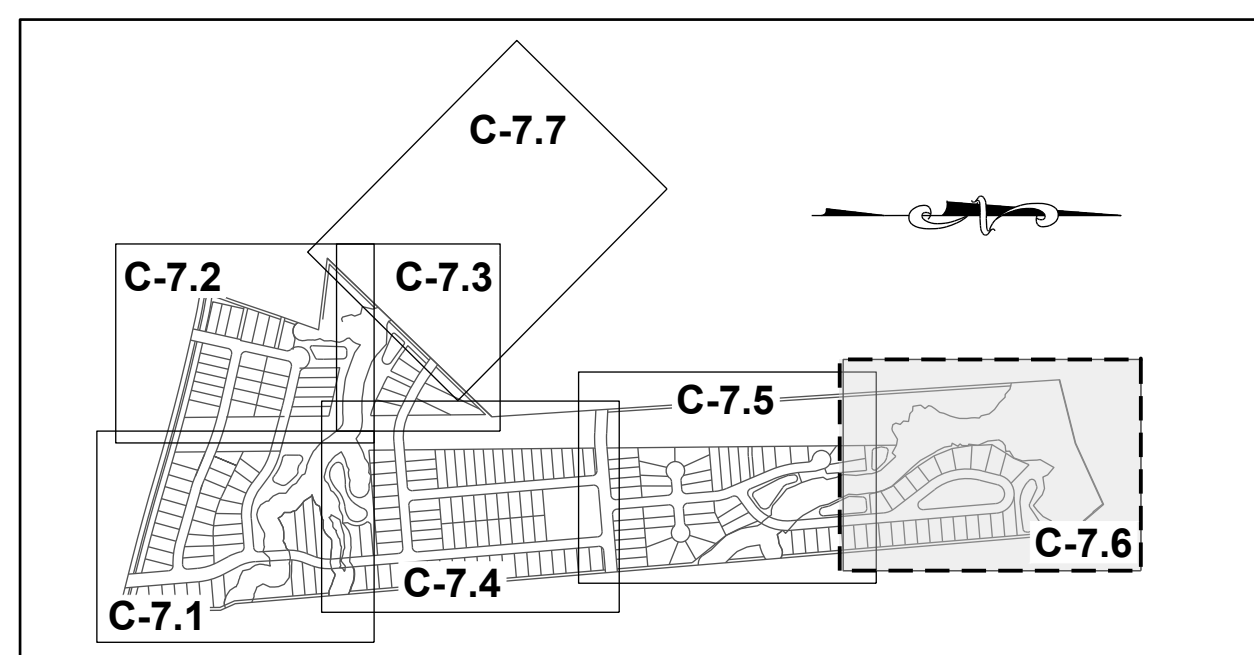
STRONG ROCK ENGINEERING GROUP, PLLC | COMPANY LICENSE # P-2166
 305 CHURCH AT NORTH HILLS STREET, SUITE 1110 RALEIGH, NC 27609 | INFORMATION@STRONGROCKGROUP.COM

STRONG ROCK PROJECT	NOT FOR CONSTRUCTION	SCALE	AS SHOWN	JWL	SRG	JWL

HILLS AT HARRIS CREEK
 TOWN OF ROLESVILLE, WAKE COUNTY, NORTH CAROLINA
 CONSTRUCTION PLANS
 PARTIAL UTILITY PLAN V

DRAWING SHEET
C-7.5

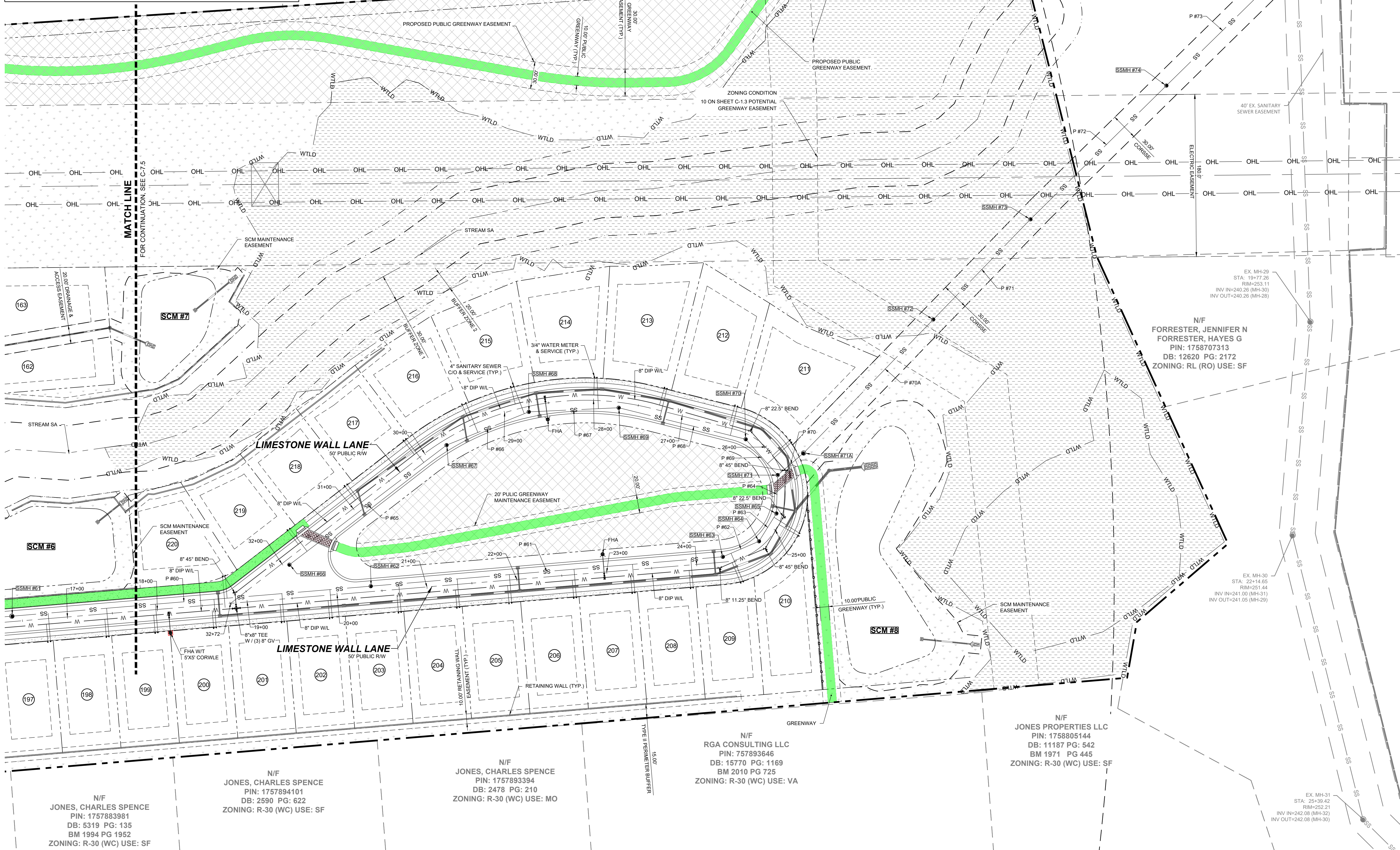
THIS PLANSET AND ANY ASSOCIATED DOCUMENTS ARE PRELIMINARY AND NOT AUTHORIZED FOR CONSTRUCTION UNTIL SIGNED, DATED, AND OFFICIALLY RELEASED FOR CONSTRUCTION BY THE ENGINEER OF RECORD.



SITE KEY PLAN

LEGEND:

SEE SHEET C-7.0 FOR LEGEND.



N/F
CARLE, SCOTT CARLE, THERESA
PIN: 1757790646
DB: 14863 PG: 2493
BM 2008 PG 2198
ZONING: R-30 (WC) USE: VA

N/F
JONES, CHARLES E
PIN: 1757694902
DB: 8581 PG: 2079
BM 2018 PG 390
ZONING: R-30 (WC) USE: VA

N/F
FORRESTER, JENNIFER N
FORRESTER, HAYES G
PIN: 1758707313
DB: 12620 PG: 2172
ZONING: RL (RO) USE: SF

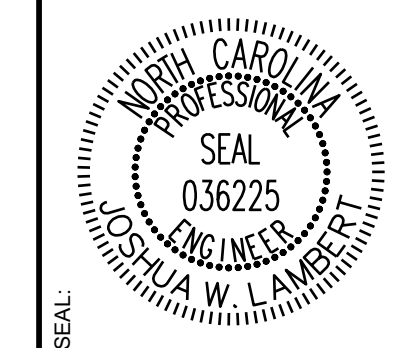
N/F
RGA CONSULTING LLC
PIN: 757893646
DB: 15770 PG: 1169
BM 2010 PG 725
ZONING: R-30 (WC) USE: VA

N/F
JONES PROPERTIES LLC
PIN: 1758805144
DB: 11187 PG: 542
BM 1971 PG 445
ZONING: R-30 (WC) USE: SF

N/F
JONES, CHARLES SPENCE
PIN: 1757883981
DB: 5319 PG: 135
BM 1994 PG 1952
ZONING: R-30 (WC) USE: SF

N/F
JONES, CHARLES SPENCE
PIN: 1757893394
DB: 2478 PG: 210
ZONING: R-30 (WC) USE: MO

NO.	REVISIONS	DATE	BY
0			
1			
2			



STRONGROCK
ENGINEERING GROUP

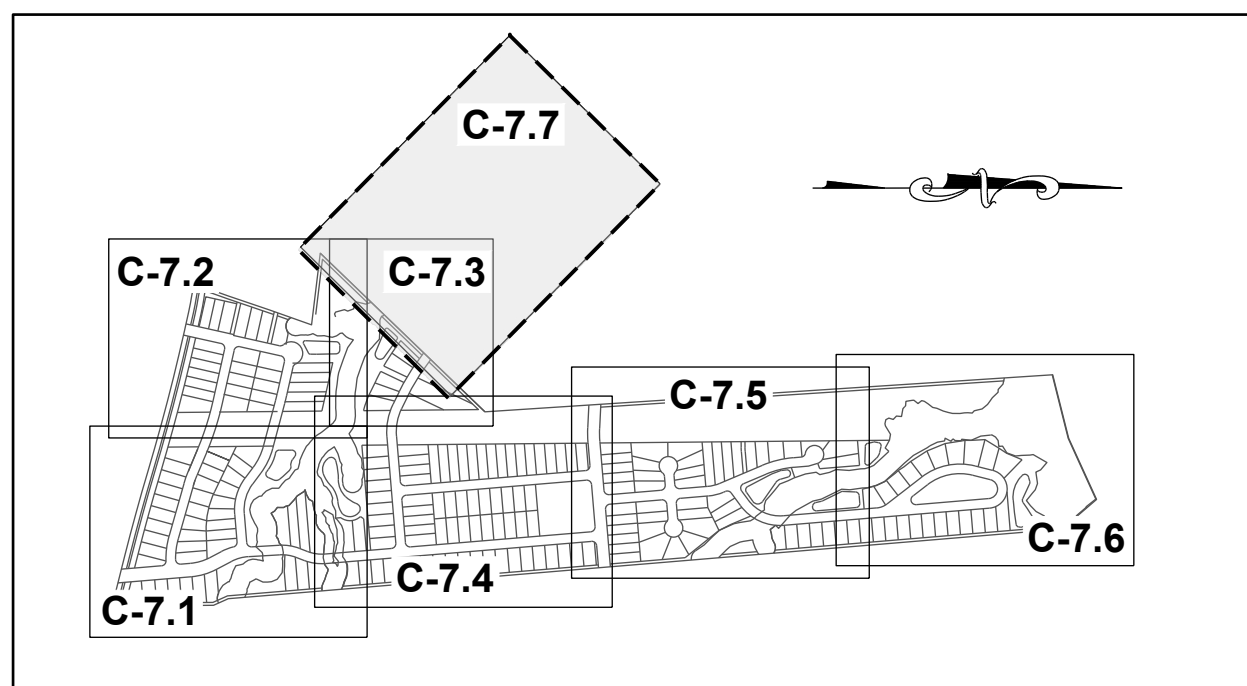
STRONG ROCK ENGINEERING GROUP, PLLC | COMPANY LICENSE # P-2166
305 CHURCH AT NORTH HILLS STREET, SUITE 1110 RALEIGH, NC 27609 | INFORMATION@STRONGROCKGROUP.COM

STRONG ROCK PROJECT	NOT FOR CONSTRUCTION	SCALE AS SHOWN	DESIGNED BY JWL	DRAWN BY SRG	CHECKED BY JWL
---------------------	----------------------	----------------	-----------------	--------------	----------------

HILLS AT HARRIS CREEK
TOWN OF ROLESVILLE, WAKE COUNTY, NORTH CAROLINA
PRELIMINARY SUBDIVISION PLAT
PARTIAL UTILITY PLAN VI

DRAWING SHEET
C-7.6

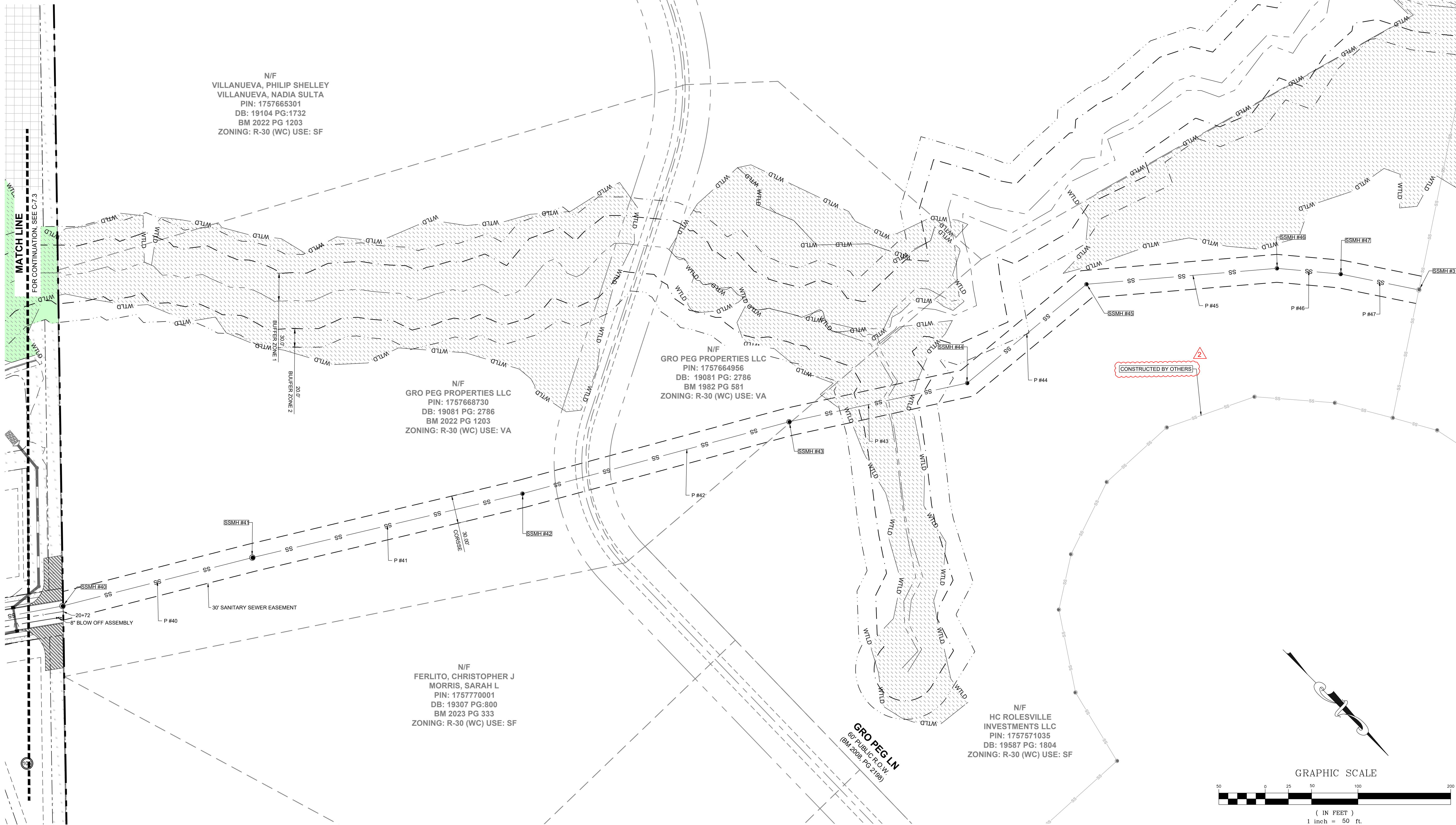
THIS PLANSET AND ANY ASSOCIATED DOCUMENTS ARE PRELIMINARY AND NOT AUTHORIZED FOR CONSTRUCTION UNTIL SIGNED, DATED, AND OFFICIALLY RELEASED FOR CONSTRUCTION BY THE ENGINEER OF RECORD.



SITE KEY PLAN

LEGEND:

SEE SHEET C-7.0 FOR LEGEND.



N/F
VILLANUEVA, PHILIP SHELLEY
VILLANUEVA, NADIA SULTA
PIN: 1757665301
DB: 19104 PG:1732
BM 2022 PG 1203
ZONING: R-30 (WC) USE: SF

N/F
GRO PEG PROPERTIES LLC
PIN: 1757668730
DB: 19081 PG: 2786
BM 2022 PG 1203
ZONING: R-30 (WC) USE: VA

N/F
GRO PEG PROPERTIES LLC
PIN: 1757664956
DB: 19081 PG: 2786
BM 1982 PG 581
ZONING: R-30 (WC) USE: VA

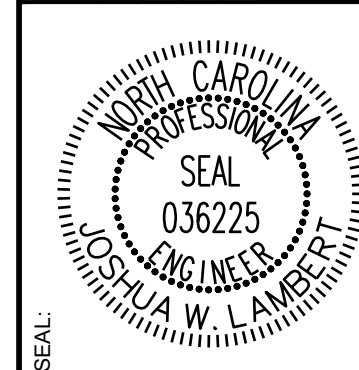
N/F
FERLITO, CHRISTOPHER J
MORRIS, SARAH L
PIN: 1757770001
DB: 19307 PG:800
BM 2023 PG 333
ZONING: R-30 (WC) USE: SF

N/F
HC ROLESVILLE
INVESTMENTS LLC
PIN: 1757571035
DB: 19587 PG: 1804
ZONING: R-30 (WC) USE: SF

GRO PEG LN
60' PUBLIC R.O.W.
(BM 2008, PG 2198)

CONSTRUCTED BY OTHERS

ISREC	DATE	BY
0	05/30/2024	
1	08/30/2024	
2	11/01/2024	



STRONGROCK
ENGINEERING GROUP

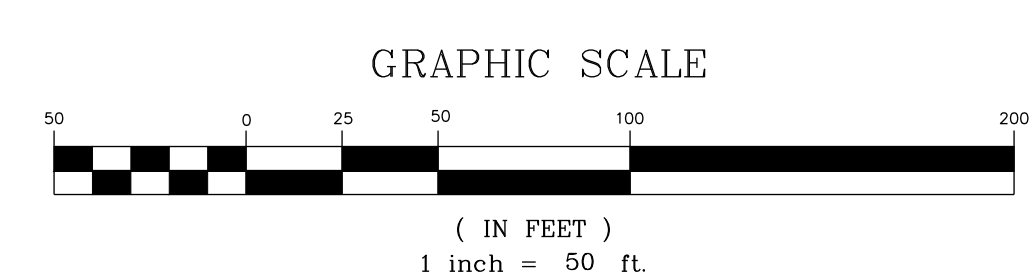
STRONG ROCK ENGINEERING GROUP, PLLC | COMPANY LICENSE # P-2166
305 CHURCH AT NORTH HILLS STREET, SUITE 1110 RALEIGH, NC 27609 | INFORMATION@STRONGROCKGROUP.COM

STRONG ROCK PROJECT	NOT FOR CONSTRUCTION	SCALE AS SHOWN	DESIGNED BY	DRAWN BY	CHECKED BY
			JWL	SRG	JWL

HILLS AT HARRIS CREEK
TOWN OF ROLESVILLE, WAKE COUNTY, NORTH CAROLINA
PRELIMINARY SUBDIVISION PLAT
PARTIAL UTILITY PLAN VII -
OFF SITE

DRAWING SHEET
C-7.7

THIS PLANSET AND ANY ASSOCIATED DOCUMENTS ARE PRELIMINARY AND NOT AUTHORIZED FOR CONSTRUCTION UNTIL SIGNED, DATED, AND OFFICIALLY RELEASED FOR CONSTRUCTION BY THE ENGINEER OF RECORD.



PIPE TABLE						
PIPE NO	TYPE	SIZE	LF	INV. IN	INV. OUT	GRADE
P #1 BEGIN: SSMH #01 END: SSMH #02	PVC - SDR 26	8"	173	322.99	309.09	8.03%
P #2 BEGIN: SSMH #02 END: SSMH #03	PVC - SDR 26	8"	149	308.89	299.33	6.42%
P #3 BEGIN: SSMH #03 END: SSMH #04	PVC - SDR 26	8"	189	299.13	293.30	3.10%
P #4 BEGIN: SSMH #04 END: SSMH #09 INSIDE DROP MANHOLE	PVC - SDR 26	8"	49	293.10	292.70	0.80%
P #5 BEGIN: SSMH #05 END: SSMH #06	PVC - SDR 26	8"	381	292.77	286.23	1.72%
P #6 BEGIN: SSMH #06 END: SSMH #07	PVC - SDR 26	8"	61	285.34	283.84	2.43%
P #7 BEGIN: SSMH #07 END: SSMH #08	PVC - SDR 26	8"	132	283.64	282.16	1.12%
P #8 BEGIN: SSMH #08 END: SSMH #09 INSIDE DROP MANHOLE	DIP	8"	243	281.96	280.74	0.50%
P #9 BEGIN: SSMH #09 END: SSMH #10 INSIDE DROP MANHOLE	DIP	8"	238	280.54	279.35	0.50%
P #10 BEGIN: SSMH #10 END: SSMH #11	PVC - SDR 26	8"	89	279.15	278.70	0.50%
P #11 BEGIN: SSMH #11 END: SSMH #12	DIP	8"	203	278.50	277.49	0.50%
P #12 BEGIN: SSMH #12 END: SSMH #13	DIP	8"	285	277.29	275.86	0.50%
P #13 BEGIN: SSMH #13 END: SSMH #21	DIP	8"	266	275.66	274.33	0.50%
P #14 BEGIN: SSMH #14 END: SSMH #15	PVC - SDR 26	8"	89	309.14	302.16	7.81%
P #15 BEGIN: SSMH #15 END: SSMH #16	PVC - SDR 26	8"	286	301.96	296.70	1.84%
P #16 BEGIN: SSMH #16 END: SSMH #17	PVC - SDR 26	8"	207	296.50	295.47	0.50%
P #17 BEGIN: SSMH #17 END: SSMH #18	PVC - SDR 26	8"	211	295.27	294.22	0.50%
P #18 BEGIN: SSMH #18 END: SSMH #20	PVC - SDR 26	8"	365	294.02	287.12	1.89%
P #19 BEGIN: SSMH #19 END: SSMH #20	PVC - SDR 26	8"	171	302.67	287.12	9.07%
P #20 BEGIN: SSMH #20 END: SSMH #21	PVC - SDR 26	8"	318	284.62	276.47	2.57%
P #21 BEGIN: SSMH #21 END: SSMH #22	PVC - SDR 26	8"	74	274.13	273.76	0.50%
P #22 BEGIN: SSMH #22 END: SSMH #23	PVC - SDR 26	8"	143	273.56	272.85	0.50%
P #23 BEGIN: SSMH #23 END: SSMH #25	DIP	8"	231	272.65	271.49	0.50%
P #25 BEGIN: SSMH #25 END: SSMH #26	PVC - SDR 26	8"	163	271.29	270.47	0.50%
P #26 BEGIN: SSMH #26 END: SSMH #39	PVC - SDR 26	8"	35	270.27	270.10	0.50%

PIPE TABLE						
PIPE NO	TYPE	SIZE	LF	INV. IN	INV. OUT	GRADE
P #27 BEGIN: SSMH #27 END: SSMH #28	PVC - SDR 26	8"	303	338.19	336.68	0.50%
P #28 BEGIN: SSMH #28 END: SSMH #29	PVC - SDR 26	8"	377	336.48	313.19	6.19%
P #29 BEGIN: SSMH #29 END: SSMH #30	PVC - SDR 26	8"	295	312.99	298.58	4.88%
P #30 BEGIN: SSMH #30 END: SSMH #36	PVC - SDR 26	8"	321	296.17	283.80	3.85%
P #31 BEGIN: SSMH #31 END: SSMH #33	PVC - SDR 26	8"	75	326.29	320.92	7.18%
P #32 BEGIN: SSMH #32 END: SSMH #33	PVC - SDR 26	8"	124	319.24	318.62	0.50%
P #33 BEGIN: SSMH #33 END: SSMH #34	DIP	8"	407	318.42	316.39	0.50%
P #34 BEGIN: SSMH #34 END: SSMH #35	PVC - SDR 26	8"	209	316.19	309.81	2.13%
P #35 BEGIN: SSMH #35 END: SSMH #36	PVC - SDR 26	8"	340	309.61	286.10	6.91%
P #36 BEGIN: SSMH #36 END: SSMH #37	PVC - SDR 26	8"	323	283.60	281.99	0.50%
P #37 BEGIN: SSMH #37 END: SSMH #38	PVC - SDR 26	8"	83	281.79	281.37	0.50%
P #38 BEGIN: SSMH #38 END: SSMH #39	DIP	8"	178	281.17	272.40	4.92%
P #39 BEGIN: SSMH #39 END: SSMH #40	DIP	8"	166	269.90	269.07	0.50%
P #40 BEGIN: SSMH #40 END: SSMH #41	DIP	8"	211	268.87	267.82	0.50%
P #41 BEGIN: SSMH #41 END: SSMH #42	DIP	8"	299	267.62	261.44	2.06%
P #42 BEGIN: SSMH #42 END: SSMH #43	PVC - SDR 26	8"	288	261.24	241.83	6.52%
P #43 BEGIN: SSMH #43 END: SSMH #44	PVC - SDR 26	8"	197	241.63	240.65	0.50%
P #44 BEGIN: SSMH #44 END: SSMH #45	PVC - SDR 26	8"	167	240.45	239.61	0.50%
P #45 BEGIN: SSMH #45 END: SSMH #46	PVC - SDR 26	8"	206	239.41	238.38	0.50%
P #46 BEGIN: SSMH #46 END: SSMH #47	PVC - SDR 26	8"	69	238.18	237.84	0.50%
P #47 BEGIN: SSMH #47 END: SSMH #49	PVC - SDR 26	8"	86	237.64	237.20	0.51%
P #48 BEGIN: SSMH #48 END: SSMH #50	PVC - SDR 26	8"	312	337.56	328.82	2.80%
P #49 BEGIN: SSMH #50 END: SSMH #53 INSIDE DROP MANHOLE	PVC - SDR 26	8"	376	328.62	312.75	4.22%
P #50 BEGIN: SSMH #51 END: SSMH #53 INSIDE DROP MANHOLE	PVC - SDR 26	8"	173	328.30	323.81	2.60%
P #51 BEGIN: SSMH #52 END: SSMH #53 INSIDE DROP MANHOLE	PVC - SDR 26	8"	207	319.74	317.05	1.30%

PIPE TABLE						
PIPE NO	TYPE	SIZE	LF	INV. IN	INV. OUT	GRADE
P #52 BEGIN: SSMH #53 INSIDE DROP MANHOLE END: SSMH #54	PVC - SDR 26	8"	226	312.55	306.15	2.83%
P #53 BEGIN: SSMH #54 END: SSMH #57	PVC - SDR 26	8"	112	305.95	302.38	3.19%
P #54 BEGIN: SSMH #55 END: SSMH #56	PVC - SDR 26	8"	237	303.59	302.14	0.61%
P #55 BEGIN: SSMH #56 END: SSMH #57	PVC - SDR 26	8"	237	301.94	300.08	0.79%
P #56 BEGIN: SSMH #57 END: SSMH #59	PVC - SDR 26	8"	42	299.88	299.66	0.50%
P #57 BEGIN: SSMH #58 END: SSMH #59	PVC - SDR 26	8"	143	299.46	294.14	3.73%
P #58 BEGIN: SSMH #59 END: SSMH #60	PVC - SDR 26	8"	114	293.94	288.78	4.54%
P #59 BEGIN: SSMH #60 END: SSMH #61	PVC - SDR 26	8"	340	288.58	282.29	1.85%
P #60 BEGIN: SSMH #61 END: SSMH #62	PVC - SDR 26	8"	399	282.09	280.09	0.50%
P #61 BEGIN: SSMH #62 END: SSMH #63	PVC - SDR 26	8"	392	279.89	264.72	3.87%
P #62 BEGIN: SSMH #63 END: SSMH #64	PVC - SDR 26	8"	44	264.52	263.62	2.06%
P #63 BEGIN: SSMH #64 END: SSMH #65	PVC - SDR 26	8"	36	263.42	261.64	4.91%
P #64 BEGIN: SSMH #65 END: SSMH #71	PVC - SDR 26	8"	43	261.44	260.00	3.38%
P #65 BEGIN: SSMH #66 END: SSMH #67	PVC - SDR 26	8"	219	264.72	269.40	7.00%
P #66 BEGIN: SSMH #67 END: SSMH #68	PVC - SDR 26	8"	98	269.20	266.62	2.62%
P #67 BEGIN: SSMH #68 END: SSMH #69	PVC - SDR 26	8"	100	266.42	264.53	1.89%
P #68 BEGIN: SSMH #69 END: SSMH #70	PVC - SDR 26	8"	145	264.33	263.02	0.90%
P #69 BEGIN: SSMH #70 END: SSMH #71	PVC - SDR 26	8"	53	262.82	260.00	5.29%
P #70 BEGIN: SSMH #71 END: SSMH #71A	PVC - SDR 26	8"	38	259.80	256.96	7.52%
P #70A BEGIN: SSMH #71A END: SSMH #72	PVC - SDR 26	8"	206	254.46	242.35	5.87%
P #71 BEGIN: SSMH #72 END: SSMH #73	PVC - SDR 26	8"	155	242.15	241.38	0.50%
P #72 BEGIN: SSMH #73 END: SSMH #74	PVC - SDR 26	8"	211	241.18	240.12	0.50%
P #73 BEGIN: SSMH #74 END: SSMH #76	PVC - SDR 26	8"	203	239.92	238.91	0.50%

SSMH TABLE					
SSMH NO	SIZE	TOP	INV. IN	INV. OUT	DEPTH
SSMH #01	4'	333.45		322.99 N	10.48
SSMH #02	4'	318.61	309.09 S	308.89 N	9.74
SSMH #03	4'	307.38	299.33 S	299.13 NW	8.24
SSMH #04	4'	302.02	293.30 SE	293.10 N	9.13
SSMH #05	5'	307.09		292.77 S	14.38
SSMH #06	4'	292.73	286.23 N	285.34 S	7.39
SSMH #07	4'	293.02	283.84 N	283.64 S	9.39
SSMH #08	4'	293.94	282.16 N	281.96 S	11.99
SSMH #09 INSIDE DROP MANHOLE	6'	300.99	292.70 S 280.74 N	280.54 W	20.48
SSMH #10	5'	298.30	279.35 E	279.15 W	19.15
SSMH #11	5'	297.72	278.70 E	278.50 NW	19.22
SSMH #12	6'	299.97	277.49 SE	277.29 W	22.69
SSMH #13	6'	300.09	275.86 E	275.66 W	24.43
SSMH #14	4'	315.00		309.14 W	5.87
SSMH #15	4'	311.26	302.16 E	301.96 W	9.30
SSMH #16	4'	306.69	296.70 E	296.50 NW	10.18
SSMH #17	5'	307.87	295.47 SE	295.27 W	12.60
SSMH #18	4'	304.83	294.22 E	294.02 W	10.81
SSMH #19	4'	314.06		302.67 N	11.41
SSMH #20	5'	299.69	287.12 S 287.12 E	284.62 N	15.10
SSMH #21	5'	290.65	274.33 E 276.47 S	274.13 NE	16.55
SSMH #22	5'	291.11	273.76 SW	273.56 N	17.54
SSMH #23	4'	276.37	272.85 S	272.65 N	3.72
SSMH #25	4'	274.25	271.49 S	271.29 NE	2.96
SSMH #26	6'	290.29	270.47 SW	270.27 NE	20.01
SSMH #27	4'	343.88		338.19 S	5.69
SSMH #28	4'	345.83	336.68 N	336.48 S	9.35
SSMH #29	4'	324.87	313.19 N	312.99 S	11.88
SSMH #30	4'	308.07	298.58 N	296.17 W	11.93
SSMH #31	4'	324.93		319.24 E	5.69
SSMH #32	4'	333.41		326.29 W	7.15
SSMH #33	4'	329.40	318.62 W 320.92 E	318.42 S	11.00
SSMH #34	5'	336.16	316.39 N	316.19 S	19.97
SSMH #35	4'	317.83	309.81 N	309.61 S	8.22
SSMH #36	5'	300.35	283.80 E 286.10 N	283.60 W	16.77
SSMH #37	4'	290.84	281.99 E	281.79 W	9.05
SSMH #38	4'	289.76	281.37 E	281.17 NW	8.59
SSMH #39	5'	289.25	272.40 SE 270.10 SW	269.90 NW	19.34
SSMH #40	6'	289.94	269.07 SE	268.87 NW	21.06
SSMH #41	6'	289.63	267.82 SE	267.62 NW	22.01

SSMH TABLE					
SSMH NO	SIZE	TOP	INV. IN	INV. OUT	DEPTH
SSMH #42	4'	267.65	261.44 SE	261.24 NW	6.41
SSMH #43	5'	255.10	241.83 SE	241.63 NW	13.60
SSMH #44	4'	251.36	240.65 SE	240.45 W	10.93
SSMH #45	4'	244.49	239.61 E	239.41 NW	5.08
SSMH #46	4'	245.77		238.18 NW	7.58
SSMH #47	4'	245.26	237.84 SE	237.64 NW	7.63
SSMH #49	4'	343.25		337.56 W	5.69
SSMH #50	4'	336.72	328.82 E	328.62 N	8.11
SSMH #51	4'	334.71		328.30 E	6.43
SSMH #52	4'	325.43		319.74 W	5.71
SSMH #53 INSIDE DROP MANHOLE	6'	330.22	312.75 S 323.81 W 317.05 E	312.55 N	17.67
SSMH #54	5'	318.47	306.15 S	305.95 N	12.55
SSMH #55	4'	309.47		303.59 S	5.91
SSMH #56	5'	316.82	302.14 N	301.94 SE	14.88
SSMH #57	5'	318.55	302.38 S 300.08 NW	299.88 NE	18.70
SSMH #58	5'	315.87	299.66 SW	299.46 NE	16.41
SSMH #59	4'	303.77	294.14 SW	293.94 NE	9.83
SSMH #60	4'	296.71	288.78 SW	288.58 N	8.13
SSMH #61	5'	299.30	282.29 S	282.09 N	17.22
SSMH #62	4'	291.24	280.09 S	279.89 N	11.35
SSMH #63	4'	272.09	264.72 S	264.52 NW	7.59