

SITE KEY PLAN

LEGEND:

SEE SHEET C-6.0 FOR LEGEND, LINE AND CURVE TABLES

N/F
SOUTHVIEW INVESTMENT LLC
PIN: 1757738451
DB: 19248 PG: 2000
ZONING: R-30 (WC) USE: SF

MITCHELL MILL ROAD - S.R. 2224
60' PUBLIC ROW
(BM 1971, PG 445)

N/F
JONES, CHARLES, ET.AL
PIN: 1757856303
DB: 13359 PG: 400
ZONING: R-30 (WC) USE: AG

N/F
JONES PROPERTIES LLC
PIN: 1757856755
DB: 12895 PG: 505
BM: 1993 PG: 446
ZONING: R-30 (WC) USE: SF

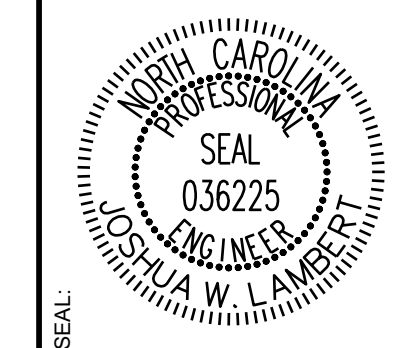
N/F
JONES, CHARLES SPENCER
PIN: 1757857937
DB: 9320 PG: 1460
BM 1993 PG 446
ZONING: R-30 (WC) USE: SF

N/F
ANDERSON, BOBBY G
PIN: 1757868104
DB: 8776 PG: 573
BM 1993 PG 446
ZONING: R-30 (WC) USE: MO

N/F
HERNADEZ, JUANITA
PIN: 1757866385
DB: 19332 PG: 1806
BM 1990 PG 132
ZONING: R-30 (WC) USE: MO

#1 - The easement lines appear to have been removed. Please add them back in; label width of easement if known.

NO.	REVISIONS	DATE	BY
0			
1	TOWN OF ROLESVILLE V1-PS-24-03	05/30/2024	
2	TOWN OF ROLESVILLE V2-PS-24-03	08/30/2024	
3	TOWN OF ROLESVILLE V3-PS-24-03	11/01/2024	
4	TOWN OF ROLESVILLE V4-PS-24-03	02/03/2025	



STRONGROCK
ENGINEERING GROUP

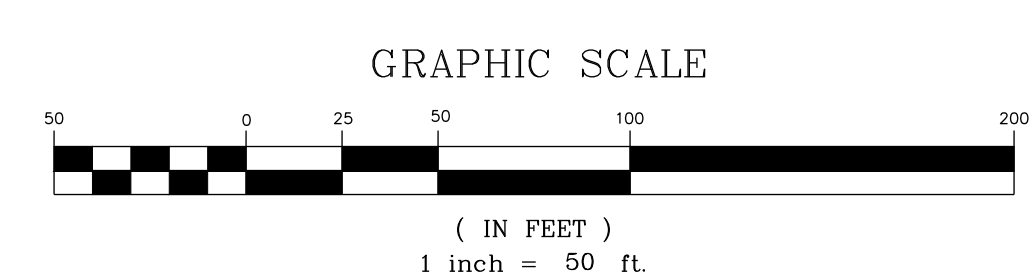
STRONG ROCK ENGINEERING GROUP, PLLC | COMPANY LICENSE # P-2166
305 CHURCH AT NORTH HILLS STREET, SUITE 1110 RALEIGH, NC 27609 | INFORMATION@STRONGROCKGROUP.COM

STRONG ROCK PROJECT	NOT FOR CONSTRUCTION	SCALE AS SHOWN	DESIGNED BY JWL	DRAWN BY SRG	CHECKED BY JWL
---------------------	----------------------	----------------	-----------------	--------------	----------------

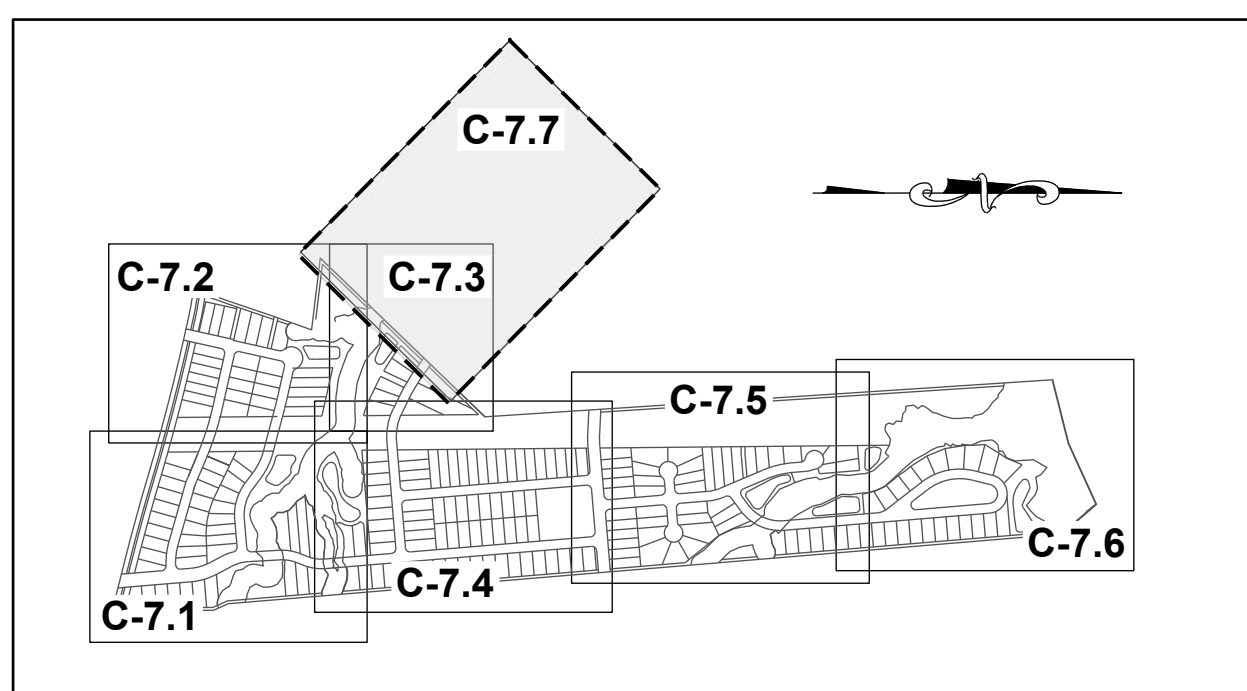
HILLS AT HARRIS CREEK
TOWN OF ROLESVILLE, WAKE COUNTY, NORTH CAROLINA
PRELIMINARY SUBDIVISION PLAN
PARTIAL SITE PLAN I

DRAWING SHEET
C-6.1

21 OF 72



THIS PLANSET AND ANY ASSOCIATED DOCUMENTS ARE PRELIMINARY AND NOT AUTHORIZED FOR CONSTRUCTION UNTIL SIGNED, DATED, AND OFFICIALLY RELEASED FOR CONSTRUCTION BY THE ENGINEER OF RECORD.



SITE KEY PLAN

LEGEND:

SEE SHEET C-7.0 FOR LEGEND.

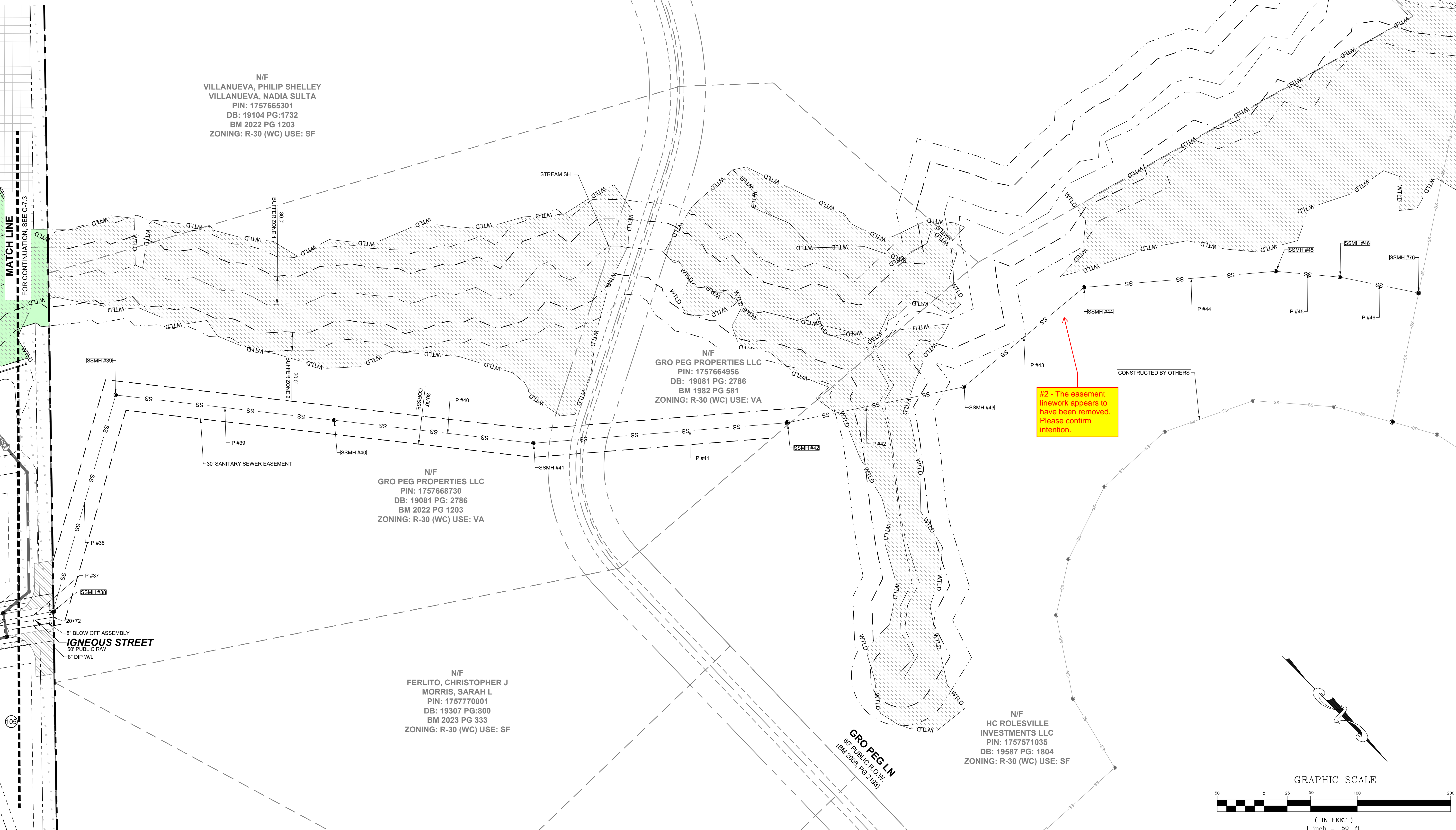
N/F
VILLANUEVA, PHILIP SHELLEY
VILLANUEVA, NADIA SULTA
PIN: 1757665301
DB: 19104 PG:1732
BM 2022 PG 1203
ZONING: R-30 (WC) USE: SF

N/F
GRO PEG PROPERTIES LLC
PIN: 1757664956
DB: 19081 PG: 2786
BM 1982 PG 581
ZONING: R-30 (WC) USE: VA

N/F
GRO PEG PROPERTIES LLC
PIN: 1757668730
DB: 19081 PG: 2786
BM 2022 PG 1203
ZONING: R-30 (WC) USE: VA

N/F
FERLITO, CHRISTOPHER J
MORRIS, SARAH L
PIN: 1757770001
DB: 19307 PG:800
BM 2023 PG 333
ZONING: R-30 (WC) USE: SF

N/F
HC ROLESVILLE
INVESTMENTS LLC
PIN: 1757571035
DB: 19587 PG: 1804
ZONING: R-30 (WC) USE: SF



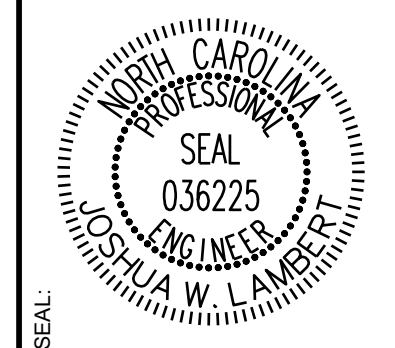
#2 - The easement linework appears to have been removed. Please confirm intention.

CONSTRUCTED BY OTHERS

8" BLOW OFF ASSEMBLY
IGNEOUS STREET
60" PUBLIC R/W
8" DIP W/L

GRO PEG LN
60" PUBLIC R.O.W.
(BM 2008, PG 2198)

No.	REVISIONS	DATE	BY
0			
1			
2			
3			



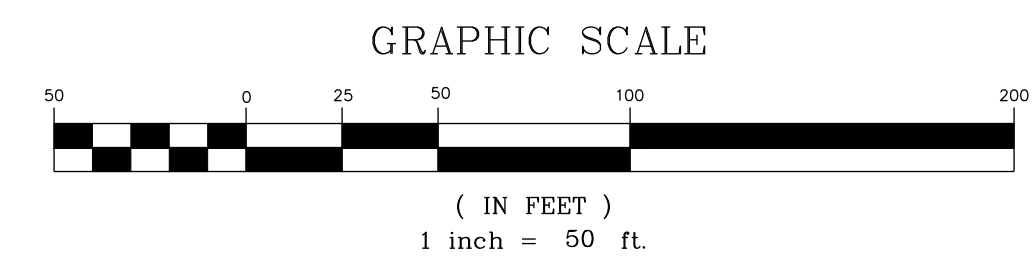
STRONGROCK
ENGINEERING GROUP

STRONG ROCK ENGINEERING GROUP, PLLC | COMPANY LICENSE # P-2166
305 CHURCH AT NORTH HILLS STREET, SUITE 1110 RALEIGH, NC 27609 | INFORMATION@STRONGROCKGROUP.COM

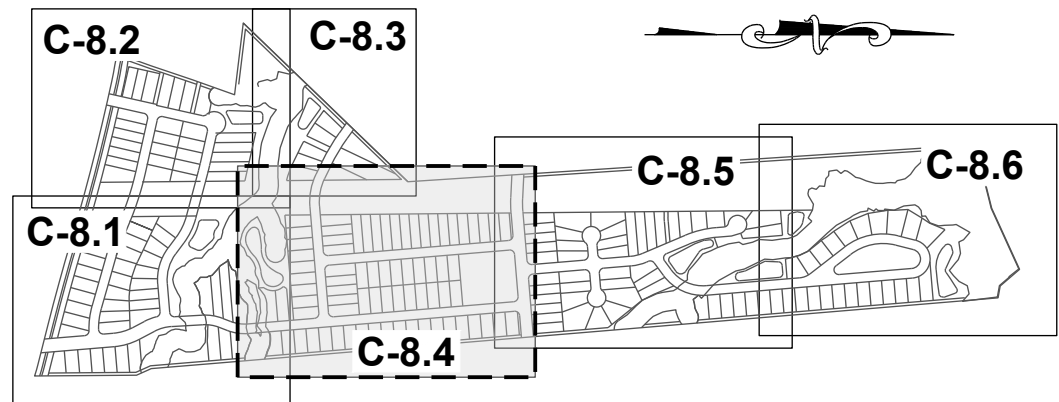
STRONG ROCK PROJECT	NOT FOR CONSTRUCTION	SCALE	DESIGNED BY	DRAWN BY	CHECKED BY
		AS SHOWN	JWL	SRG	JWL

HILLS AT HARRIS CREEK
TOWN OF ROLESVILLE, WAKE COUNTY, NORTH CAROLINA
PRELIMINARY SUBDIVISION PLAT
PARTIAL UTILITY PLAN VII -
OFF SITE

DRAWING SHEET
C-7.7



THIS PLANSET AND ANY ASSOCIATED DOCUMENTS ARE PRELIMINARY AND NOT AUTHORIZED FOR CONSTRUCTION UNTIL SIGNED, DATED, AND OFFICIALLY RELEASED FOR CONSTRUCTION BY THE ENGINEER OF RECORD.

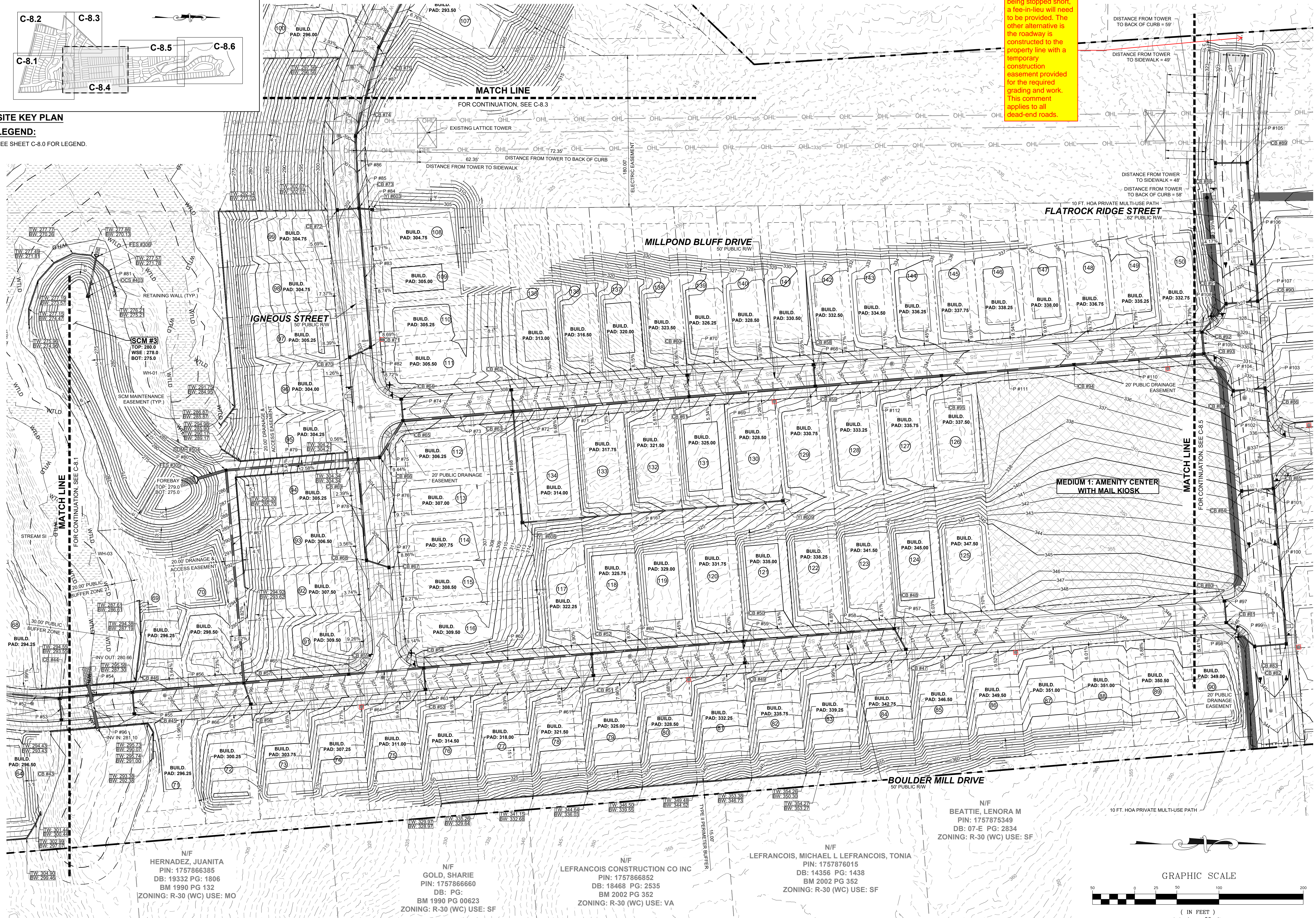


SITE KEY PLAN

LEGEND:

SEE SHEET C-8.0 FOR LEGEND.

#3 - Since the roadway work is being stopped short, a fee-in-lieu will need to be provided. The other alternative is the roadway is constructed to the property line with a temporary construction easement provided for the required grading and work. This comment applies to all dead-end roads.



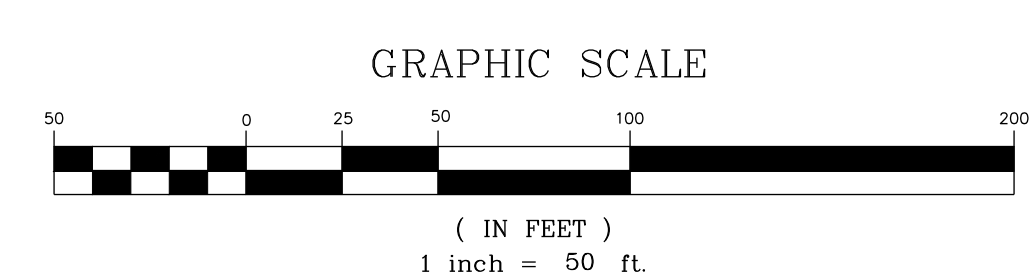
N/F
HERNADEZ, JUANITA
PIN: 1757866385
DB: 19332 PG: 1806
BM 1990 PG 132
ZONING: R-30 (WC) USE: MO

N/F
GOLD, SHARIE
PIN: 1757866660
DB: PG:
BM 1990 PG 00623
ZONING: R-30 (WC) USE: SF

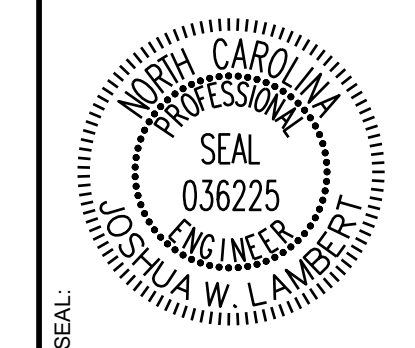
N/F
LEFRANCOIS CONSTRUCTION CO INC
PIN: 1757866852
DB: 18468 PG: 2535
BM 2002 PG 352
ZONING: R-30 (WC) USE: VA

N/F
LEFRANCOIS, MICHAEL L LEFRANCOIS, TONIA
PIN: 1757876015
DB: 14356 PG: 1438
BM 2002 PG 352
ZONING: R-30 (WC) USE: SF

N/F
BEATTIE, LENORA M
PIN: 1757875349
DB: 07-E PG: 2834
ZONING: R-30 (WC) USE: SF



NO.	REVISIONS	DATE	BY
0			
1			
2			
3			



STRONGROCK
ENGINEERING GROUP

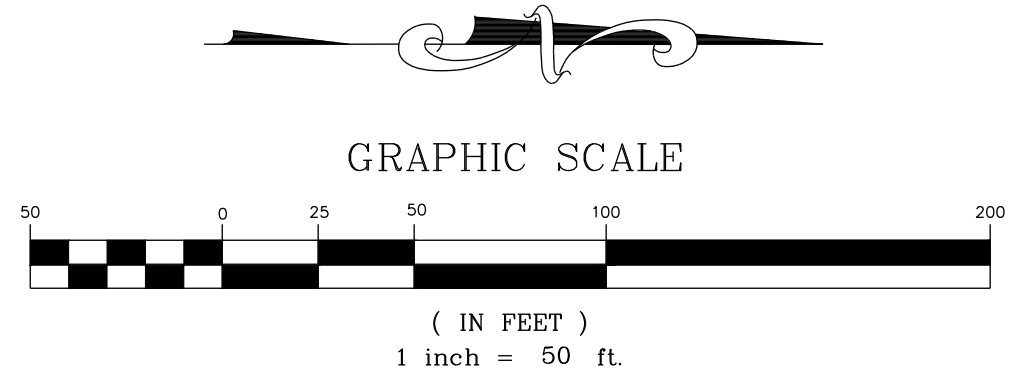
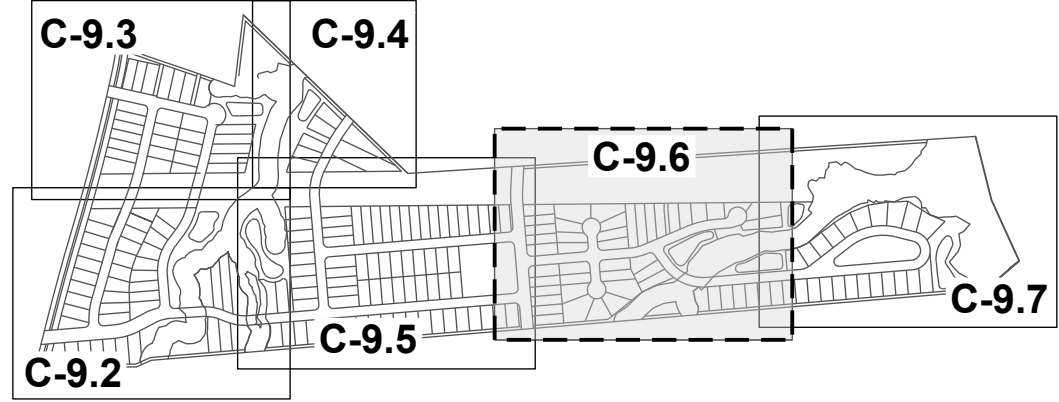
STRONG ROCK ENGINEERING GROUP, PLLC | COMPANY LICENSE # P-2166
305 CHURCH AT NORTH HILLS STREET, SUITE 1110 RALEIGH, NC 27609 | INFORMATION@STRONGROCKGROUP.COM

STRONG ROCK PROJECT	NOT FOR CONSTRUCTION	SCALE AS SHOWN	DESIGNED BY JWL	DRAWN BY SRG	CHECKED BY JWL
---------------------	----------------------	----------------	-----------------	--------------	----------------

HILLS AT HARRIS CREEK
TOWN OF ROLESVILLE, WAKE COUNTY, NORTH CAROLINA
PRELIMINARY SUBDIVISION PLAN
PARTIAL GRADING & DRAINAGE
PLAN IV

DRAWING SHEET
C-8.4

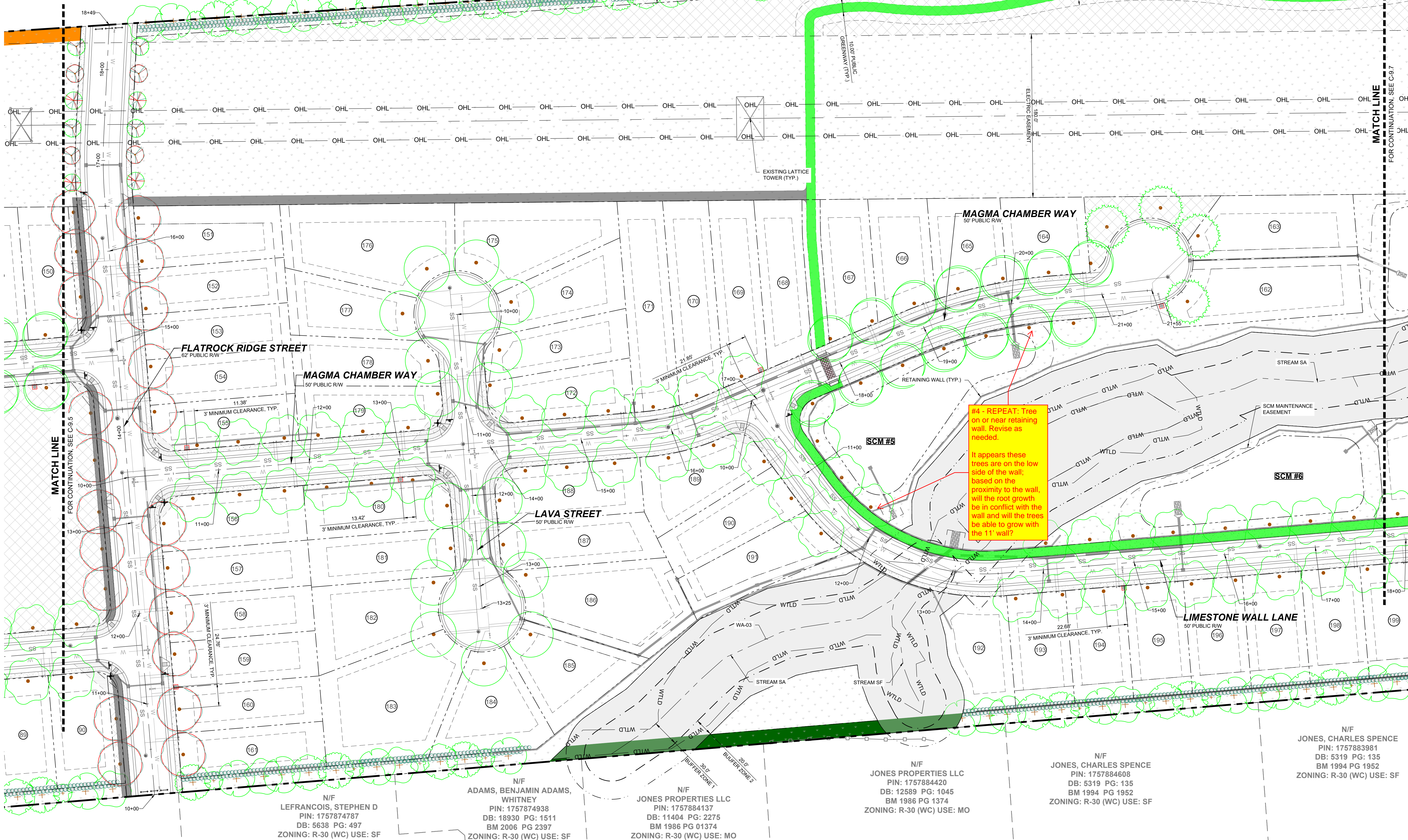
THIS PLANSET AND ANY ASSOCIATED DOCUMENTS ARE PRELIMINARY AND NOT AUTHORIZED FOR CONSTRUCTION UNTIL SIGNED, DATED, AND OFFICIALLY RELEASED FOR CONSTRUCTION BY THE ENGINEER OF RECORD.



SITE KEY PLAN LEGEND: SEE SHEET C-9.0 & C-9.1 FOR LEGEND AND TREE SCHEDULES.

N/F CARLE, SCOTT CARLE, THERESA PIN: 1757780258 DB: 14863 PG: 2493 BM 2008 PG 2198 ZONING: R-30 (WC) USE: SF

N/F CARLE, SCOTT CARLE, THERESA PIN: 1757781960 DB: 14863 PG: 2493 BM 2009 PG 645 ZONING: R-30 (WC) USE: VA



N/F LEFRANCOIS, STEPHEN D PIN: 1757874787 DB: 5638 PG: 497 ZONING: R-30 (WC) USE: SF

N/F ADAMS, BENJAMIN ADAMS, WHITNEY PIN: 1757874938 DB: 18930 PG: 1511 BM 2006 PG 2397 ZONING: R-30 (WC) USE: SF

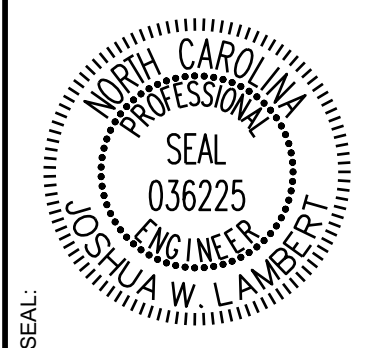
N/F JONES PROPERTIES LLC PIN: 1757884137 DB: 11404 PG: 2275 BM 1986 PG 01374 ZONING: R-30 (WC) USE: MO

N/F JONES PROPERTIES LLC PIN: 1757884420 DB: 12589 PG: 1045 BM 1986 PG 1374 ZONING: R-30 (WC) USE: MO

N/F JONES, CHARLES SPENCE PIN: 1757884608 DB: 5319 PG: 135 BM 1994 PG 1952 ZONING: R-30 (WC) USE: SF

N/F JONES, CHARLES SPENCE PIN: 1757883981 DB: 5319 PG: 135 BM 1994 PG 1952 ZONING: R-30 (WC) USE: SF

Table with columns: No., REVISIONS, DATE, BY. Contains revision history for sheets C-9.3, C-9.4, C-9.5, C-9.6, C-9.7.



STRONGROCK ENGINEERING GROUP logo and contact information: STRONG ROCK ENGINEERING GROUP, PLLC | COMPANY LICENSE # P-2166 | 305 CHURCH AT NORTH HILLS STREET, SUITE 1110 RALEIGH, NC 27609 | INFORMATION@STRONGROCKGROUP.COM

HILLS AT HARRIS CREEK TOWN OF ROLESVILLE, WAKE COUNTY, NORTH CAROLINA PRELIMINARY SUBDIVISION PLAN PARTIAL LANDSCAPE PLAN V

DRAWING SHEET C-9.6

THIS PLANSET AND ANY ASSOCIATED DOCUMENTS ARE PRELIMINARY AND NOT AUTHORIZED FOR CONSTRUCTION UNTIL SIGNED, DATED, AND OFFICIALLY RELEASED FOR CONSTRUCTION BY THE ENGINEER OF RECORD.