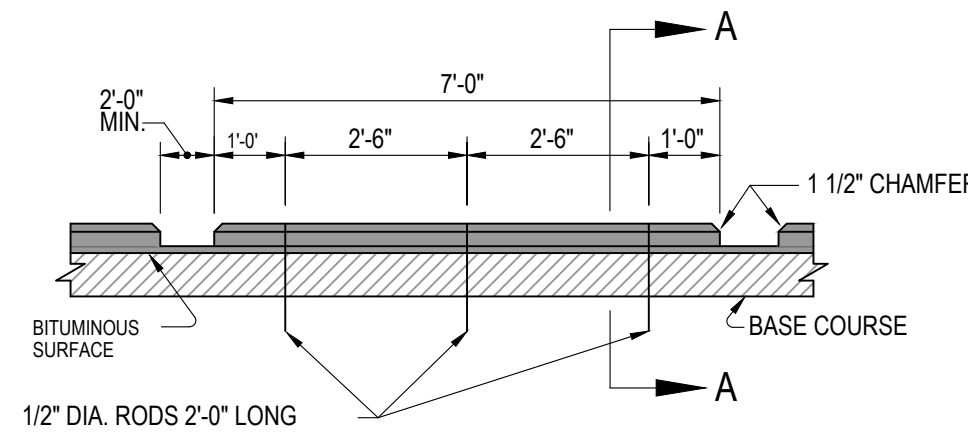
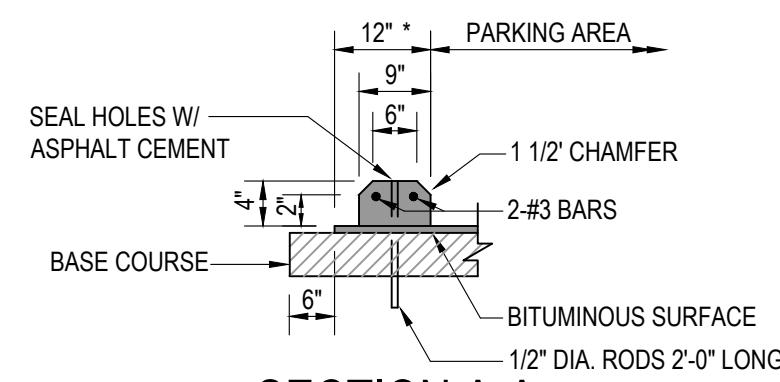


- NOTES:
1. MINIMUM 3000 PSI CONCRETE.
 2. MINIMUM CROSS SLOPE IS 2%. MINIMUM LONGITUDINAL SLOPE IS 0.5% (1% PREFERRED).
 3. MAXIMUM CONTRACTION JOINT SPACING IS 5'. MAXIMUM EXPANSION JOINT SPACING IS 40'.
 4. WELDED WIRE MESH (WWM) SHALL BE PLACED IN THE UPPER ONE THIRD OF THE SLAB. NO WWM SHALL BE VISABLE AT THE SURFACE. DOWELS SHALL BE PLACED IN THE CENTER OF THE SLAB.
 5. DOWELS THAT ARE PLACED INTO DRILLED CONCRETE SHALL BE INSTALLED WITH BONDING MATERIAL.
 6. COMPACTED SUBGRADE SHALL BE COMPACTED TO MODIFIED PROCTOR 90% MAX. DRY DENSITY AT OPTIMUM MOISTURE CONTENT.

1 CONCRETE SIDEWALK DETAILS
SCALE: NTS

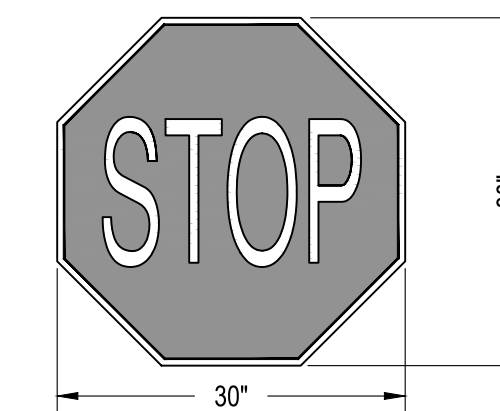


- NOTES:
1. ANCHOR RODS TO BE SLEEVED OR GREASED THRU CONC. CURBS TO PERMIT RELOCATION OF CURBS.
 2. PLACE WHEELSTOPS 2.5' FROM CURB.

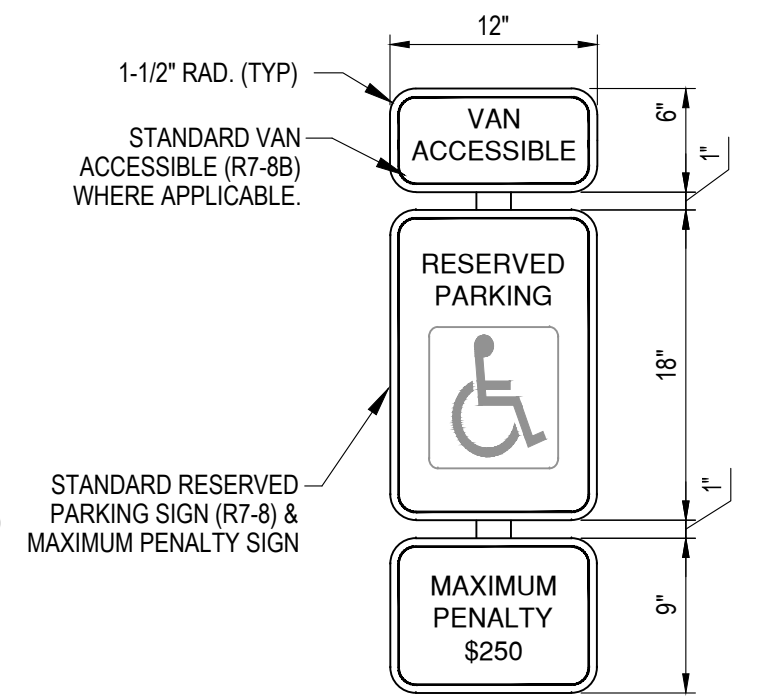
2 WHEEL STOP DETAIL
SCALE: NTS



COLORS:
LEGEND - BLACK (RETROREFLECTIVE)
BACKGROUND - YELLOW (RETROREFLECTIVE)
PEDESTRIAN CROSSING (W11A-2)
NOT TO SCALE



COLORS:
LEGEND - WHITE (RETROREFLECTIVE)
BACKGROUND - RED (RETROREFLECTIVE)
STOP SIGN (R1-1)
NOT TO SCALE



COLORS:
LETTERING SYMBOL - GREEN (RETROREFLECTIVE)
STRIPES - WHITE ON BLUE (RETROREFLECTIVE)
BACKGROUND - GREEN (RETROREFLECTIVE)
BACKGROUND - WHITE (RETROREFLECTIVE)

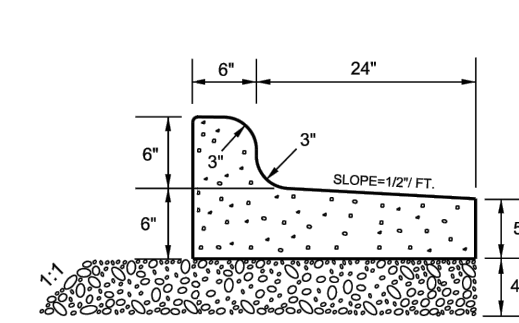
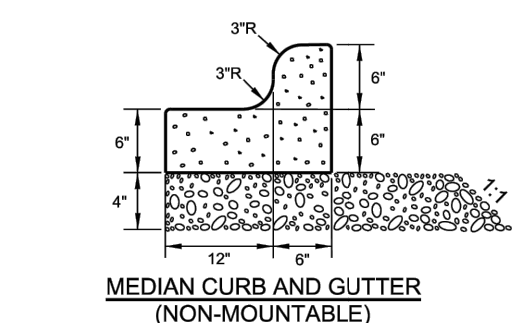
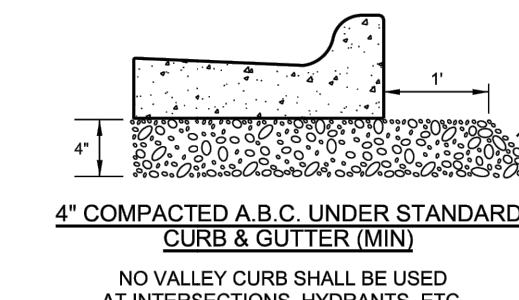
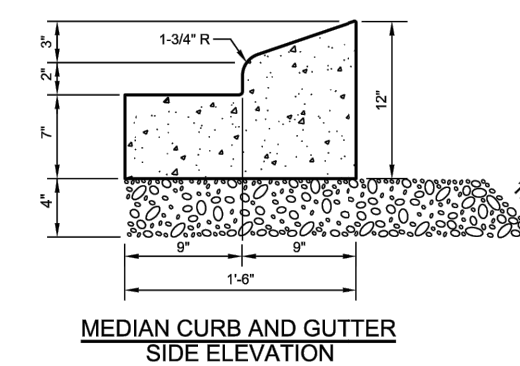
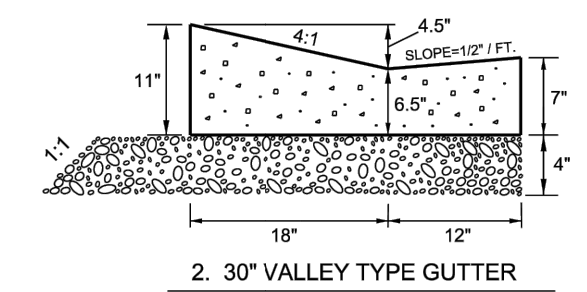
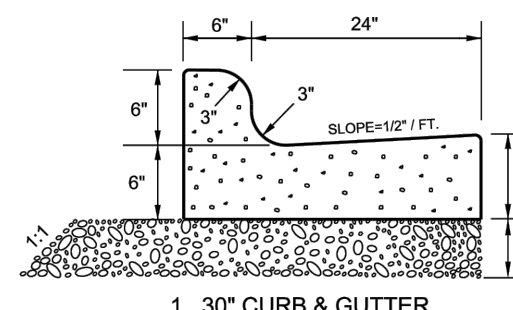
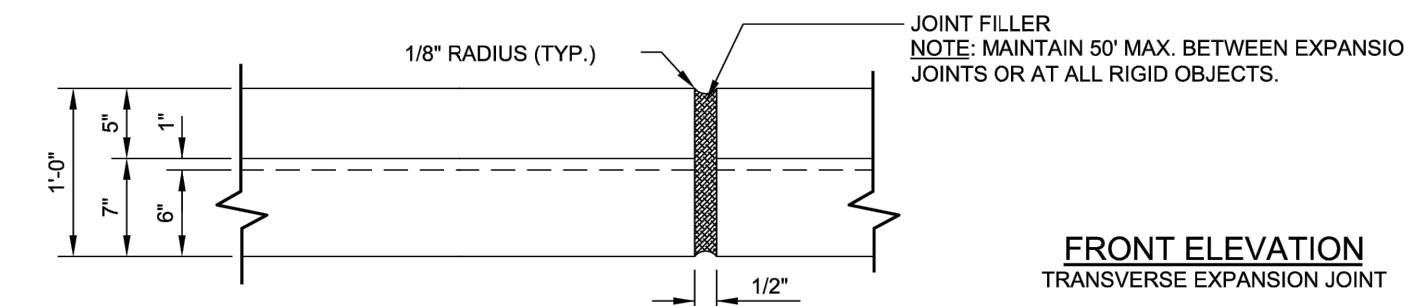
ACCESSIBILITY PARKING SIGN (R7-8)
NOT TO SCALE

- NOTES:
1. MUTCD STANDARD SIGN DESIGNATION SHOW AS (X-1)
 2. MOUNTING HEIGHT - 60" FROM BOTTOM OF SIGN TO PAVEMENT IN NON-PEDESTRIAN AREAS AND 84" IN PEDESTRIAN AREAS.
 3. ALL SIGN SHALL BE MOUNTED TO 3LB 'U-CHANNEL' POST.
 4. ALL ROAD WAY SIGNAGE SHALL BE HIGH INTENSITY SHEETING SIGNS SHALL MEET THE REQUIREMENTS OF THE MANUAL ON UNIFORM TRAFFIC CONTROL DEVICES (MUTCD).
 5. SIGNS SHALL BE FABRICATED FROM ALUMINUM ALLOY SHEETS.
 6. ALL MOUNTING HARDWARE SHALL BE GALVANIZED.



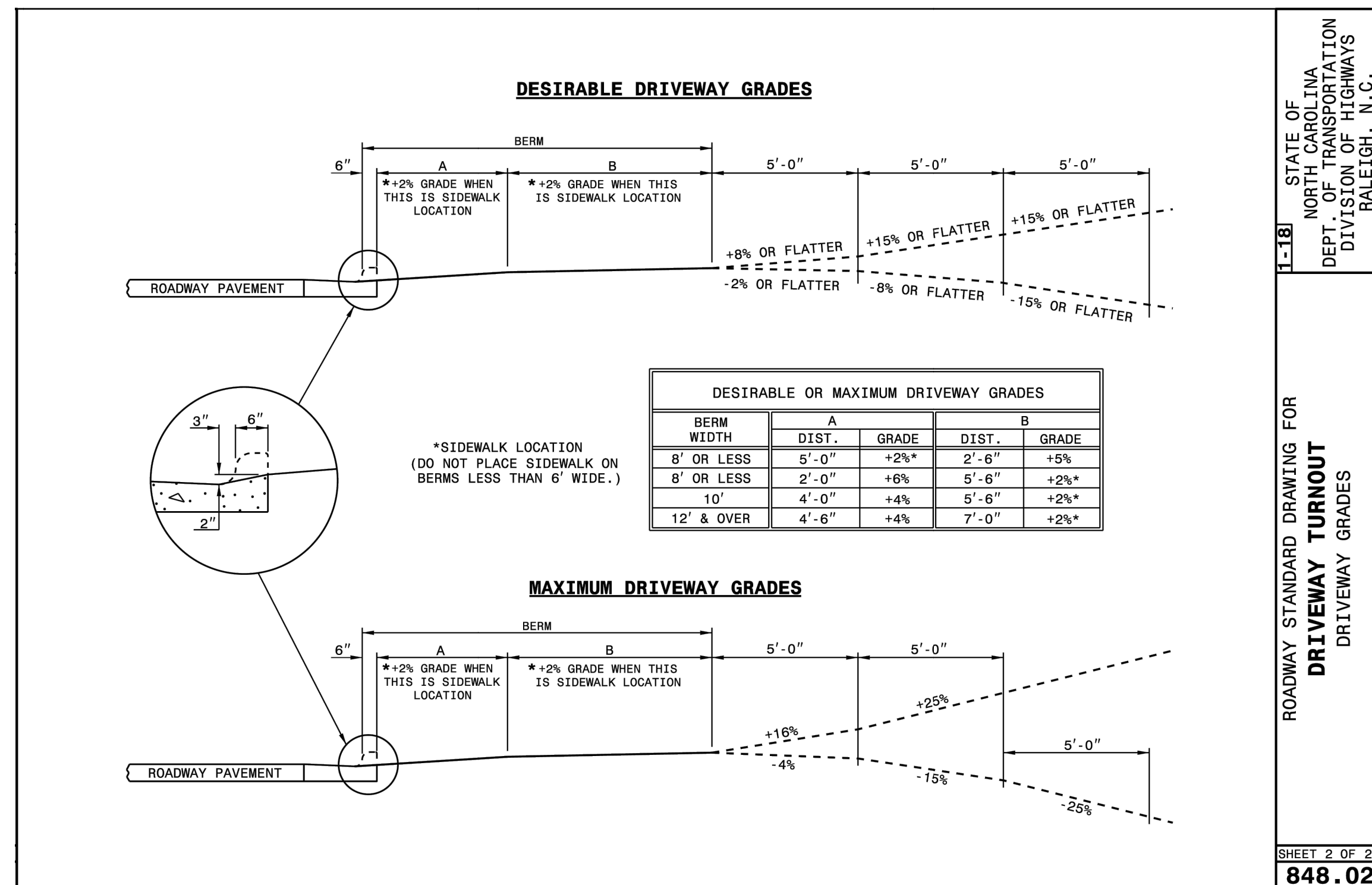
COLORS:
LEGEND - BLACK (RETROREFLECTIVE)
BACKGROUND - WHITE (RETROREFLECTIVE)
SPEED LIMIT SIGN (R2-1)
NOT TO SCALE

3 PARKING & STREET SIGNAGE
SCALE: NTS



- NOTES:
1. 10' MAXIMUM BETWEEN DUMMY JOINTS.
 - 15' MAXIMUM BETWEEN DUMMY JOINTS ON MACHINE POURS.
 2. 1/2" EXPANSION JOINT EVERY 50'.
 3. 3000 PSI CONCRETE MINIMUM, 4" SLUMP MAXIMUM.
 4. LIQUID MEMBRANE CURING COMPOUND SHALL MEET THE REQUIREMENTS OF SECTION 1028-2 OF NCDOT STANDARDS & SPECIFICATIONS FOR ROADS AND STRUCTURES.
 5. ALL CONSTRUCTION JOINTS SHALL BE FILLED WITH JOINT FILLER AND SEALER IN ACCORDANCE WITH NCDOT ROADWAY STANDARD DETAIL 846.01 THE JOINT MATERIAL SHALL CONFORM TO SECTION 1028-2 OF NCDOT STANDARD & SPECIFICATIONS FOR ROADS AND STRUCTURES.
 6. REFER TO NCDOT DETAIL 846.01 FOR CURB AND GUTTER SUPERELEVATION RATES.

4 CONCRETE CURB AND GUTTER
SCALE: NTS

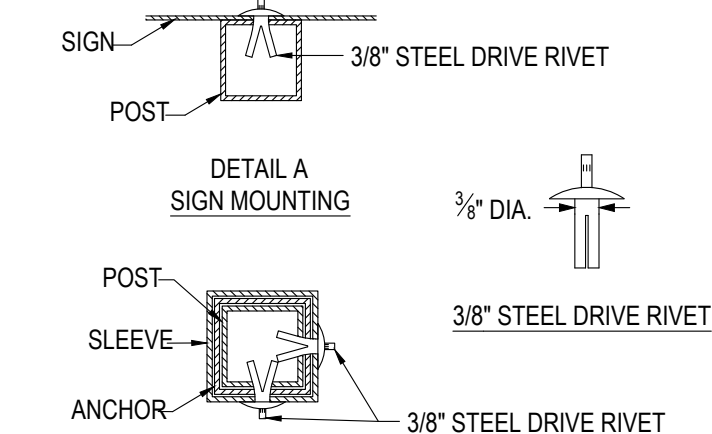
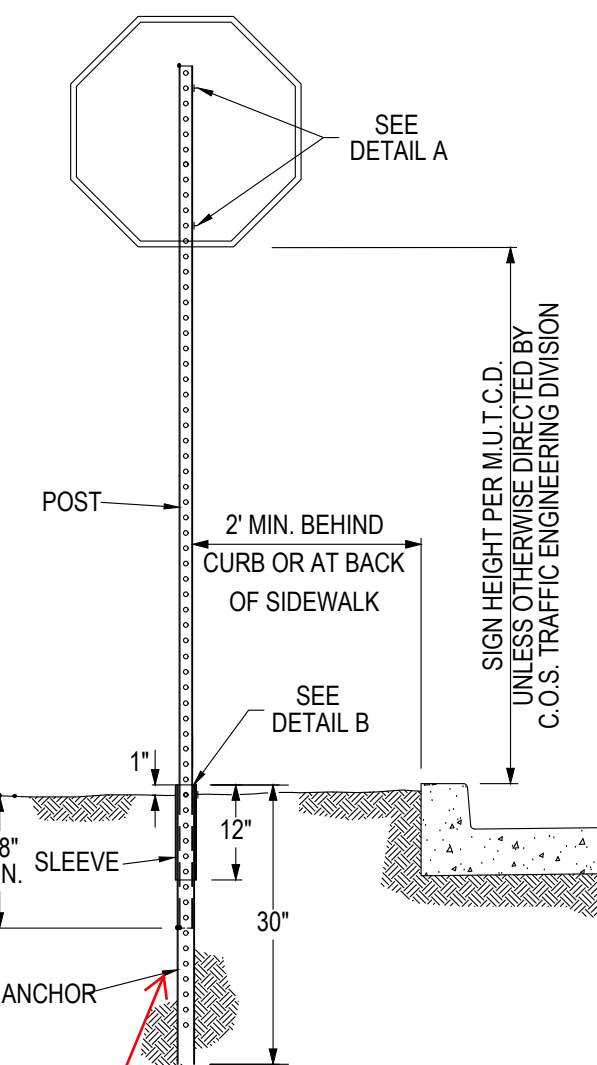


STATE OF NORTH CAROLINA DEPT. OF TRANSPORTATION DIVISION OF HIGHWAYS RALEIGH, N.C.

ROADWAY STANDARD DRAWING FOR DRIVEWAY TURNOUT DRIVEWAY GRADES

SHEET 2 OF 3
848.02

9 - Per the Town's Standards Manual, signs shall be placed in concrete. Please add this to the detail.



- NOTES:
1. POST - 1-3/4" X 1-3/4" SQUARE PERFORATED 0.105" GALVANIZED STEEL TUBING
 2. SLEEVE - 2-1/4" X 2-1/4" X 12" SQUARE PERFORATED 0.105 GALVANIZED STEEL TUBING
 3. ANCHOR - 2" X 2" X 30" SQUARE PERFORATED 0.105" GALVANIZED STEEL TUBING
 4. STOP SIGNS & STREET SIGN SHALL BE INSTALLED ON SAME POST.

5 SIGN POST & ASSEMBLY
SCALE: NTS

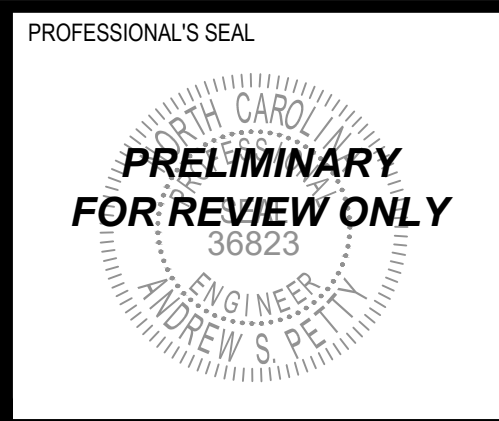
Z:\PROJECTS\FOLDER_ZEBEL\CON2024\2024-033 THE JOEL FUND - ROLESVILLE\PLANS\SITE PLAN\SHEET FILES\C-4.0 - SITE DETAILS.DWG
DATE: AUGUST 30, 2024
FILE NO. 2024-033

NO.	REVISIONS

STATUS
FOR REVIEW ONLY
NOT FOR CONSTRUCTION

DATE: AUGUST 30, 2024
FILE NO. 2024-033

HORZ. SCALE:
ORIG. SHEET SIZE: 24 x 36



CONSULTANT

Curry
ENGINEERING

CURRY ENGINEERING
38823
N.C. LIC. NO. P-7099

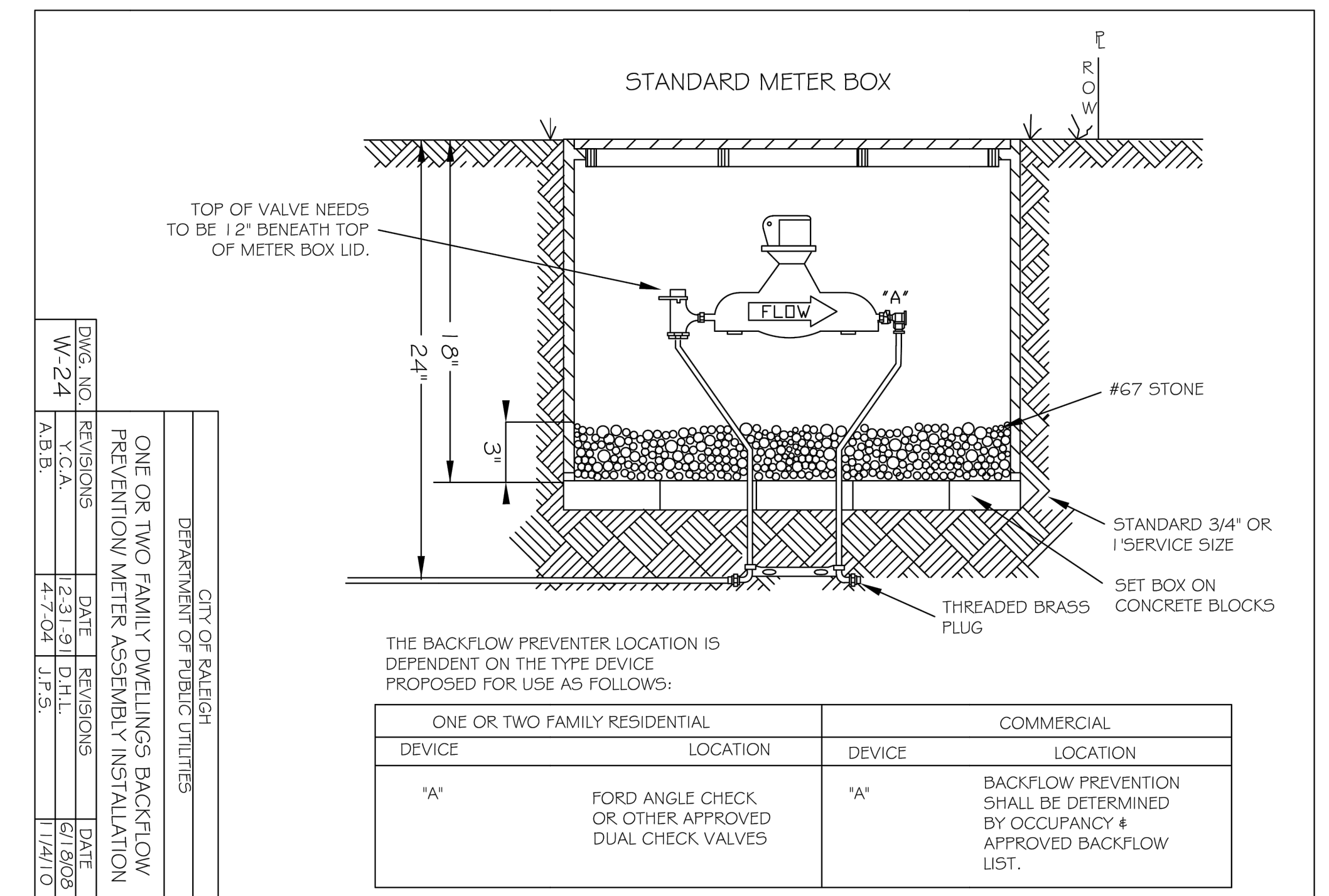
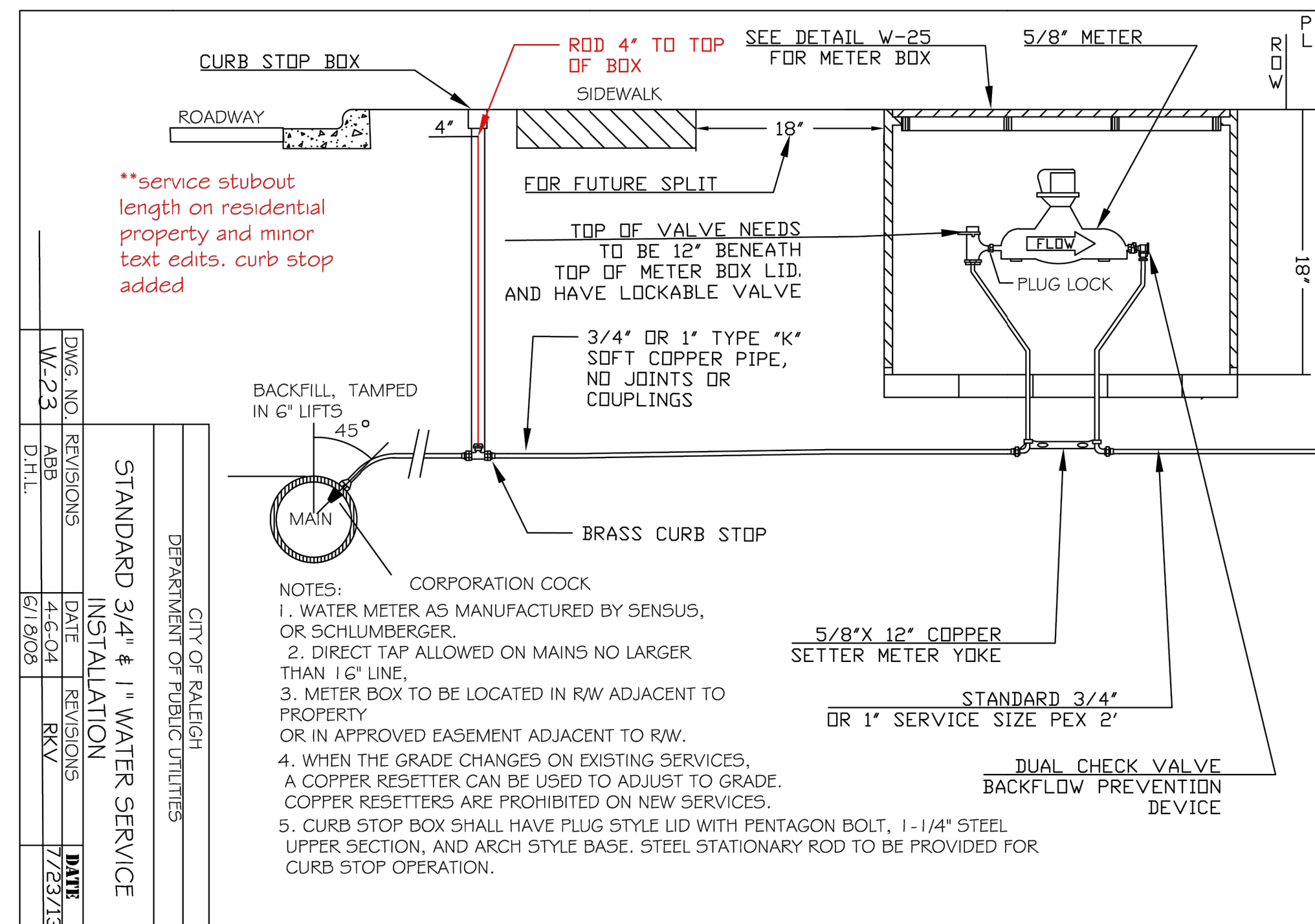
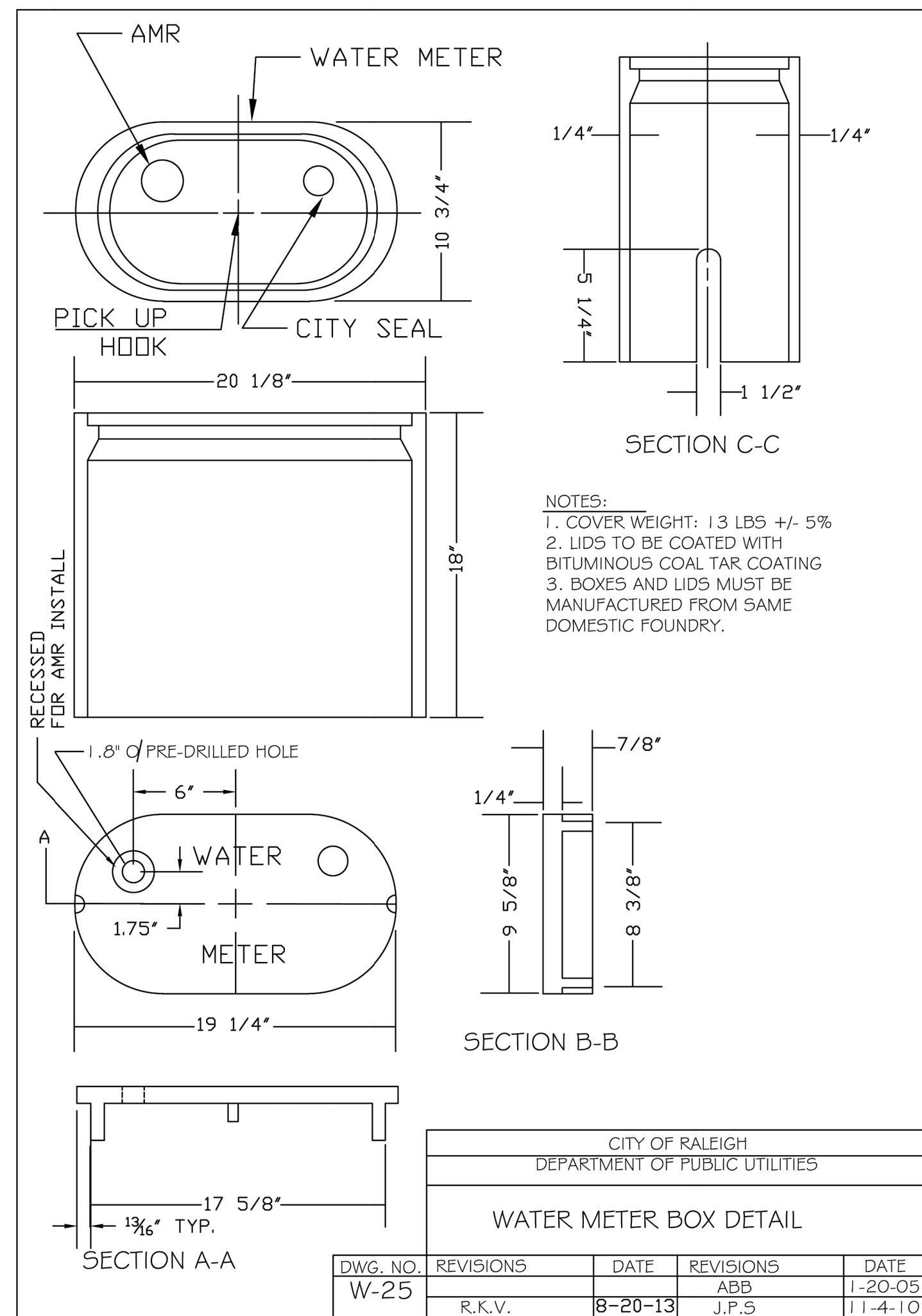
(919) 552-0840
308 S. Fugate Avenue
Fayetteville, NC 27526

CLIENT

The Joel Fund
822 S White St, Suite 116
Wake Forrest, NC 27587
919.418.9042
Contact: Brook Dickhart
email: brooke@joelfund.org

CONSTRUCTION DRAWINGS
THE JOEL FUND
SITE DETAILS

C-4.0

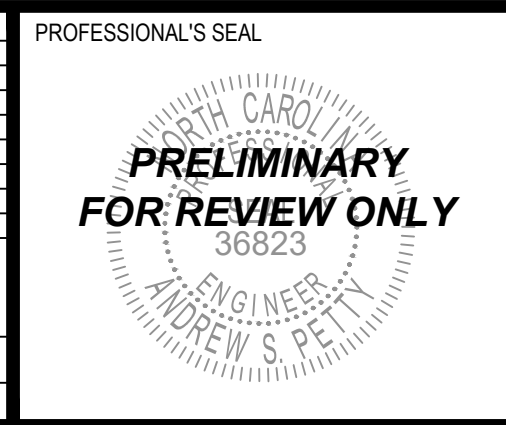


Z:\PROJECTS\FOLDER_ZERULON\2024\2024-033 THE JOEL FUND - ROLESVILLE PLANSITE PLAN SHEET FILES\C-2 UTILITY DETAILS.DWG
PLOTTED: 9/19/2024 11:05 AM

REVISIONS	DATE	BY	DESCRIPTION

STATUS
FOR REVIEW ONLY
NOT FOR CONSTRUCTION

DATE: AUGUST 30, 2024	HORIZ. SCALE:
FILE NO: 2024-033	ORIG. SHEET SIZE: 24 x 36



CONSULTANT

Curry
ENGINEERING

EST. 1916
NORTH CAROLINA

NC LIC. NO. P-0799

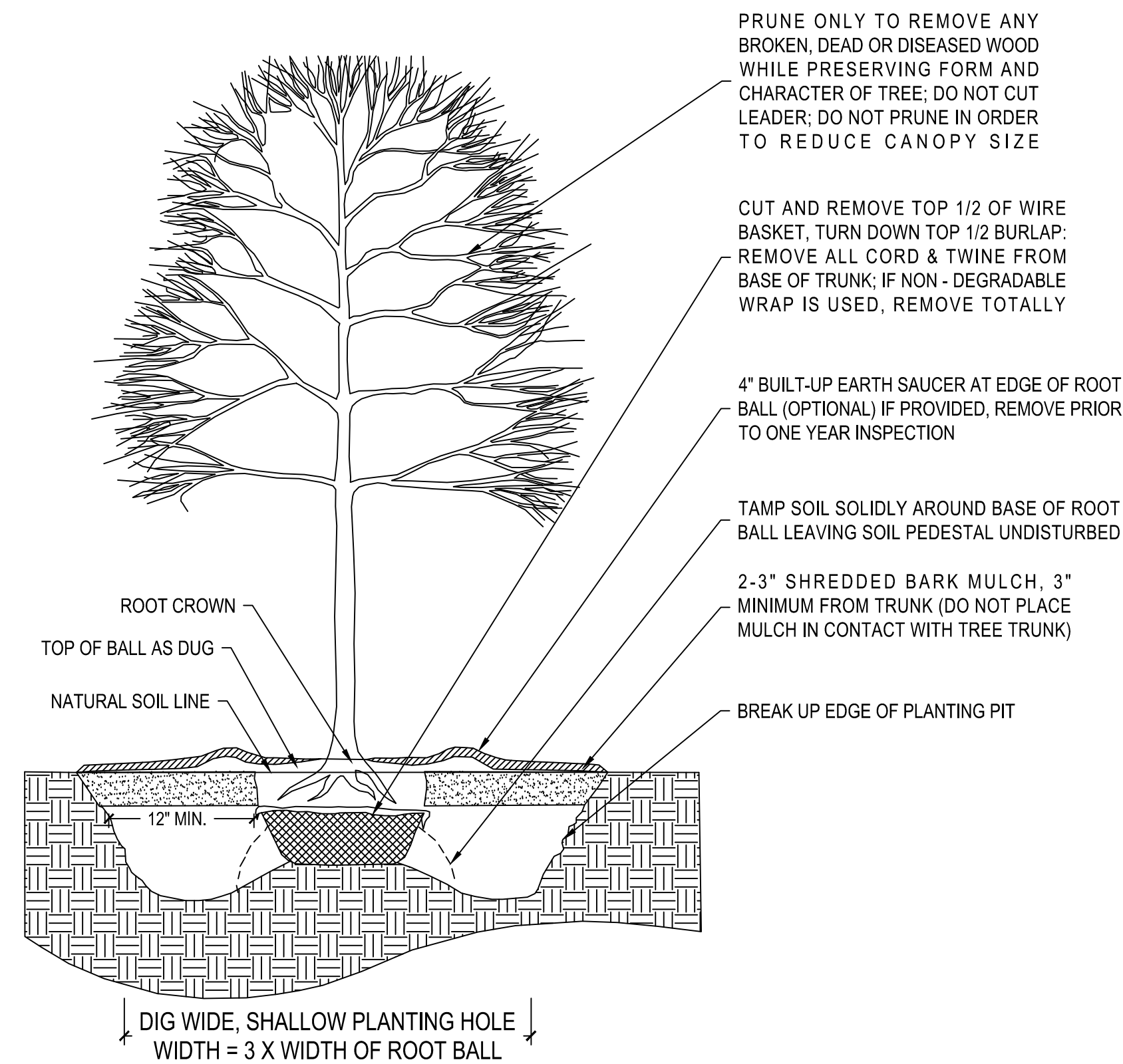
(919) 552-0840
308 S. Fugate Avenue
Fayetteville, NC 27526
F (919) 552-2643

CLIENT

The Joel Fund
822 S White St, Suite 116
Wake Forrest, NC 27587
919.418.9042
Contact: Brook Dickhart
email: brooke@joelfund.org

CONSTRUCTION DRAWINGS
THE JOEL FUND
UTILITY DETAILS

C-4.2

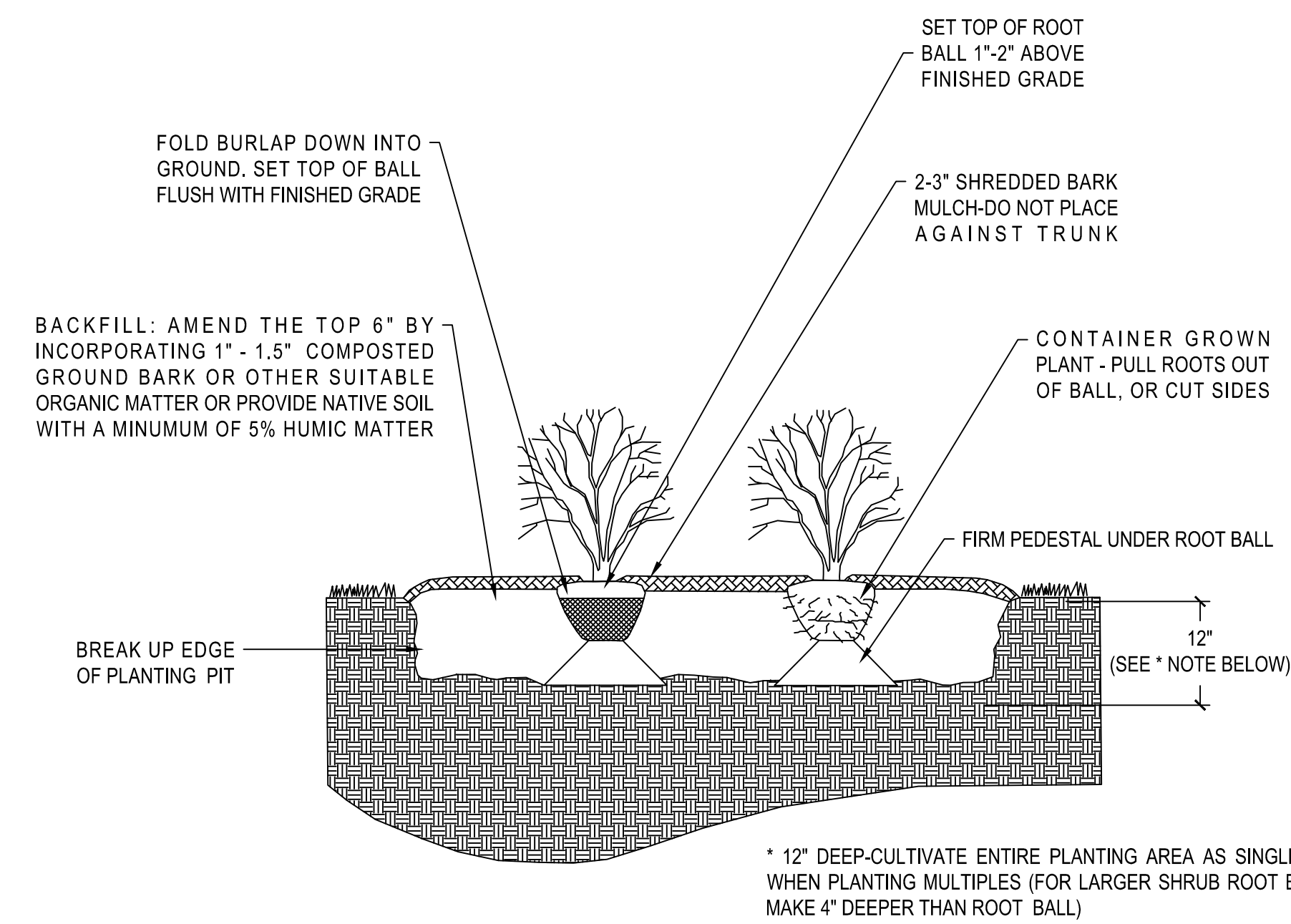


NOTES

1. CONTRACTOR TO VERIFY THAT ADEQUATE DRAINAGE EXISTS PRIOR TO PLANTING.
2. DO NOT WRAP TRUNK OF TREE.
3. STAKING OF TREES IS NOT RECOMMENDED, EXCEPT ON WINDY SITES OR FOR LARGE EVERGREEN TREES. IF STAKING IS DONE, FLEXIBLE STRAPS - NOT HOSE AND WIRE - SHOULD BE USED AND MUST BE REMOVED AT APPROPRIATE TIME. PROPERTY OWNER IS RESPONSIBLE FOR REPLACEMENT OF DESTROYED OR DAMAGED TREES.
4. ALL TREES SHALL CONFORM TO THE STANDARDS SET FORTH IN THE MOST RECENT AMERICAN STANDARDS FOR NURSERY STOCK PUBLISHED BY THE AMERICAN ASSOCIATION OF NURSERMEN (A.A.N.).
5. TREES WITH ROOT FLARE COVERED BY MORE THAN 1.5" OF SOIL WILL BE REJECTED PRIOR TO INSTALLATION.

TREE PLANTING DETAIL (LAN-37)

NTS



NOTES

1. ALL SHRUBS SHALL CONFORM TO THE STANDARDS SET FORTH IN THE MOST RECENT AMERICAN STANDARDS FOR NURSERY STOCK PUBLISHED BY THE AMERICAN ASSOCIATION OF NURSERMEN (A.A.N.).
2. SOIL ANALYSIS SHALL BE OBTAINED PRIOR TO PLANTING. SOIL SHALL BE AMENDED AS RECOMMENDED.
3. SHEET PREPARATION OF BEDS IS HIGHLY PREFERRED TO INDIVIDUAL DUG HOLES.

SHRUB/GROUNDCOVER PLANTING DETAIL (LAN-38)

NTS

LANDSCAPE CALCULATIONS:

PERIMETER BUFFERS REQUIREMENTS:	25' TYPE 3	4 CANOPY TREES PER 100 LF 2 UNDERSTORY TREES PER 100 LF 60 SHRUBS PER 100 LF 6HT WALL
UNVEGETATED BUFFER REQUIRED	160.14 LF	7 CANOPY TREES 4 UNDERSTORY TREES 96 SHRUBS 6HT WALL
PROVIDED	7 CANOPY TREES 4 UNDERSTORY TREES 96 SHRUBS 6H WALL	
VEGETATED BUFFER REQUIRED	210.79 LF	9 CANOPY TREES 5 UNDERSTORY TREES 127 SHRUBS 6HT WALL - N/A DUE TO EXISTING VEGETATION PRESERVATION EXISTING VEGETATION TO BE PRESERVED & SUPPLEMENTED AS NECESSARY TO MEET THE MINIMUM REQUIREMENTS OF THE BUFFER TYPE
PROVIDED		
STREET BUFFERS REQUIREMENTS:	30' STREETScape BUFFER	1 CANOPY TREE PER 40 LF
STREETScape BUFFER REQUIRED	78.56 LF	2 CANOPY TREES 2 CANOPY TREES
PROVIDED		
PARKING LOT LANDSCAPING REQUIREMENTS:		1 CANOPY TREE PER TERMINAL ISLAND CONTINUOUS EVERGREEN PERIMETER PLANTING @ 3' O.C.
REQUIRED		2 CANOPY TREES CONTINUOUS EVERGREEN PERIMETER PLANTING @ 3' O.C.
PROVIDED		2 CANOPY TREES CONTINUOUS EVERGREEN PERIMETER PLANTING @ 3' O.C.

PLANT SCHEDULE

KEY	QTY	BOTANICAL NAME	COMMON NAME	ROOT	CALIPER (MINIMUM)	HEIGHT (MINIMUM)	TYPE	USE	NOTES
CANOPY TREES									
ARO	7	Acer rubrum 'October Glory'	October Glory® Red Maple	B&B	2"	8'	D	PERIMETER BUFFER	MATCHED
ONU	2	Quercus nuttallii	Nuttall Oak	B&B	2.5"	8'	D	STREETScape BUFFER	MATCHED
UPB	2	Ulmus parvifolia 'Bosque'	Chinese Elm	B&B	2"	8'	D	PARKING LOT	MATCHED
UNDERSTORY TREES									
LIN	4	Lagerstroemia indica	Crape Myrtle	B&B	1"	8'	D	PERIMETER BUFFER	MATCHED
SHRUBS									
AGR	29	Abelia x grandiflora	Glossy Abelia	CONT.		18"	E	PERIMETER BUFFER	MATCHED
ICB	72	Ilex cornuta 'Burfordii Nana'	Dwarf Burford Holly	CONT.		18"	E	PARKING LOT / PERIMETER BUFFER	MATCHED
IGS	38	Ilex glabra 'Shamrock'	Shamrock Inkberry Holly	CONT.		18"	E	PERIMETER BUFFER	MATCHED
TYPE / USE LEGEND									
PLANT TYPE: E = EVERGREEN / D = DECIDUOUS / SE = SEMI-EVERGREEN / H = HERBACEOUS									

D:\PROJECTS\2024\2024-033\LANDSCAPE\DETAILS.DWG
PLOTTED: 8/20/2024 11:42 AM

REVISIONS

PROFESSIONAL'S SEAL

CONSULTANT

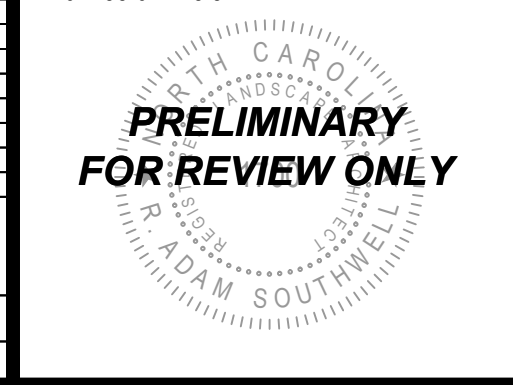
CLIENT

NO.	DATE	DESCRIPTION

STATUS
FOR REVIEW ONLY
NOT FOR CONSTRUCTION

DATE: AUGUST 15, 2024
FILE NO. 2024-033

HORZ. SCALE:
ORIG. SHEET SIZE: 24 x 36



Curry
ENGINEERING

CURRY ENGINEERS
10
NORTH CAROLINA
EST. 1919
B. ADAM SOUTHWELL

T (919) 552-0949
F (919) 552-2043
205 S. Fugate Avenue
Fayetteville, NC 27526

The Joel Fund
822 S White St, Suite 116
Wake Forrest, NC 27587
919.418.9042
Contact: Brook Dickhart
email: brooke@joelfund.org

CONSTRUCTION DRAWINGS
THE JOEL FUND
LANDSCAPE DETAILS