

**GENERAL NOTES**

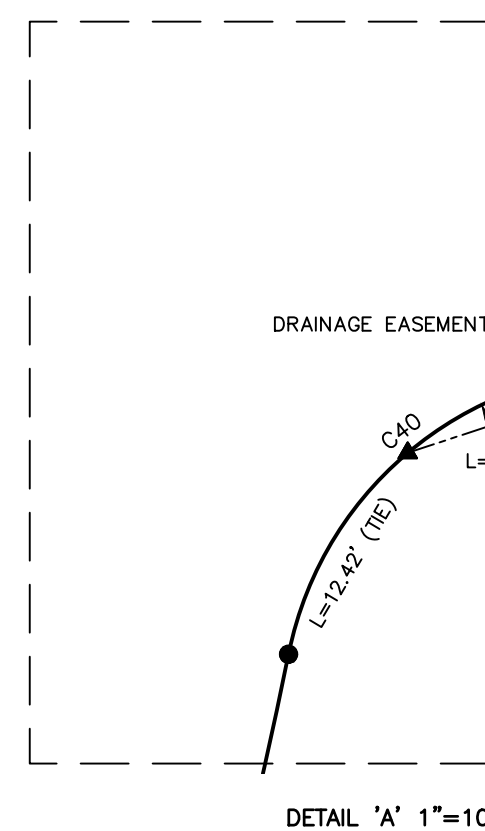
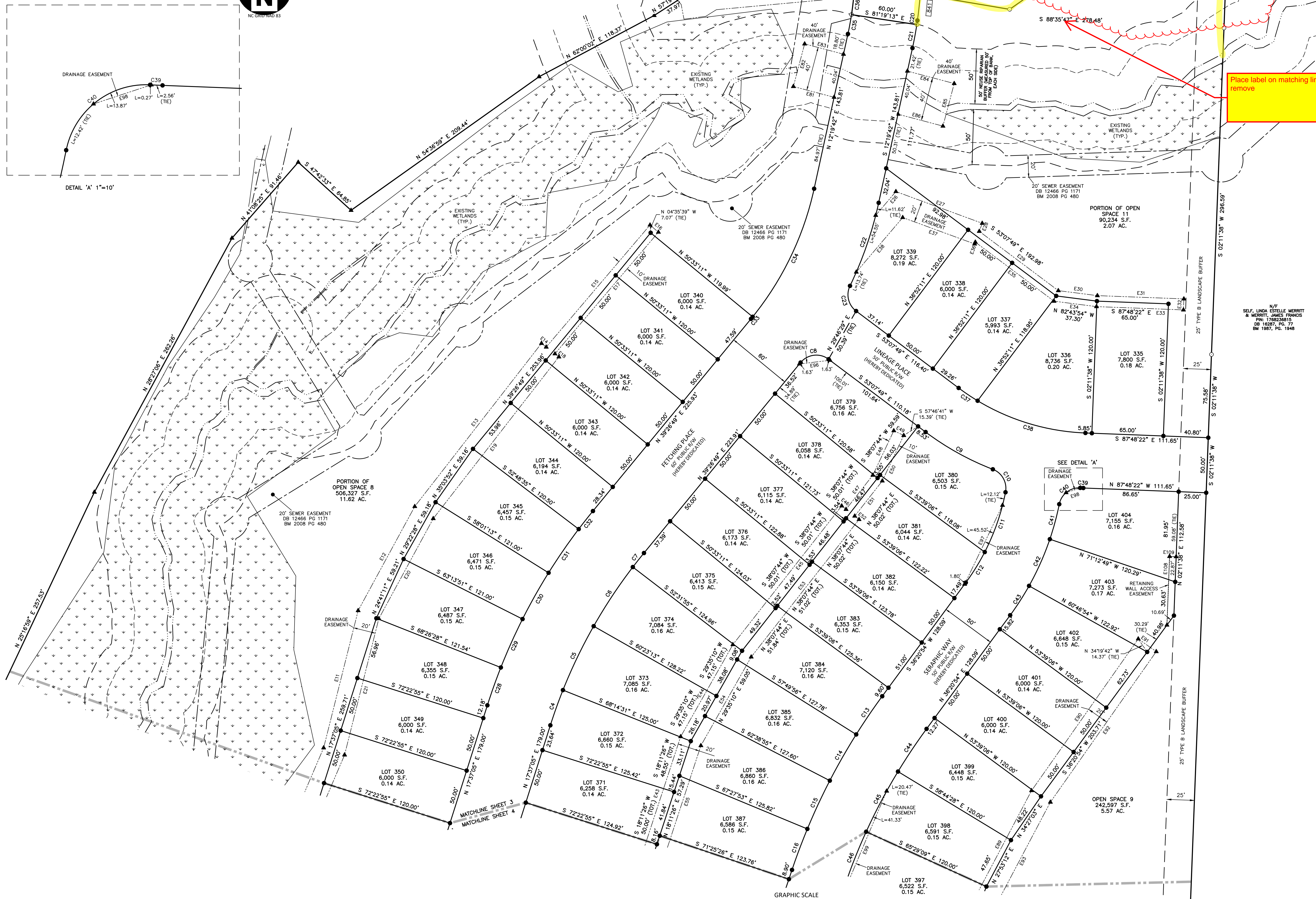
1. FOR GENERAL NOTES, SEE SHEET 1.



Please provide a grid tie and/or coordinates for a property corner and statement on how the coordinates were established

Please provide metes and bounds for highlighted lines along open space. Show adjoining lots and references

Place label on matching line or remove



N/F SELF, LINDA ESTELLE MERRITT & MERRITT, JAMES FRANCIS  
PIN: 1768236815  
DB 16087, PG. 77  
BM 1987, PG. 1948

**McADAMS**  
The John R. McAdams Company, Inc.  
2905 Meridian Parkway  
Durham, NC 27713  
phone 919.361.5000  
fax 919.361.2269  
license number: C-0293, C-187  
www.mcadamsco.com

**CLIENT**  
ASHTON RALEIGH RESIDENTIAL, LLC  
5711 SIX FORKS ROAD, SUITE 300  
RALEIGH, NC 27609  
PHONE: 919.232.3695  
CONTACT: BOB MISHLER

**THE POINT**  
PHASE 7 SUBDIVISION PLAT  
EAST YOUNG STREET  
WAKE FOREST TOWNSHIP, WAKE COUNTY, NORTH CAROLINA



**REVISIONS**

NO.	DATE

**PLAN INFORMATION**

PROJECT NO. AWH20000  
FILENAME AWH20000-F7  
CHECKED BY JBT  
DRAWN BY KMM  
SCALE 1"=40'  
DATE 01.02.2025

**SHEET**  
FINAL PLAT  
**3-5**

X:\Project\AWH\20000\02\_Geomatics\Survey\Plan\AWH20000-F7 Plt 7.dwg, 1/27/2025 10:05:42 AM, Keith Martin