

TOWNHOME NOTES:
 STATES INTERNAL TOWNHOME DRIVEWAYS ARE PRIVATE EASEMENTS AS PER CITY OF RALEIGH PUBLIC UTILITIES DEPARTMENT

SITE KEY PLAN LEGEND:
 SEE SHEET C-7.0 FOR LEGEND.

This sewer stub needs to be closer to the low point (near the creek) of the adjacent parcel.

MATCH LINE
 FOR CONTINUATION, SEE C-7.7



NO.	REVISIONS	DATE	BY
01			
02			
03			
04			
05			
06			



STRONGROCK
 ENGINEERING GROUP

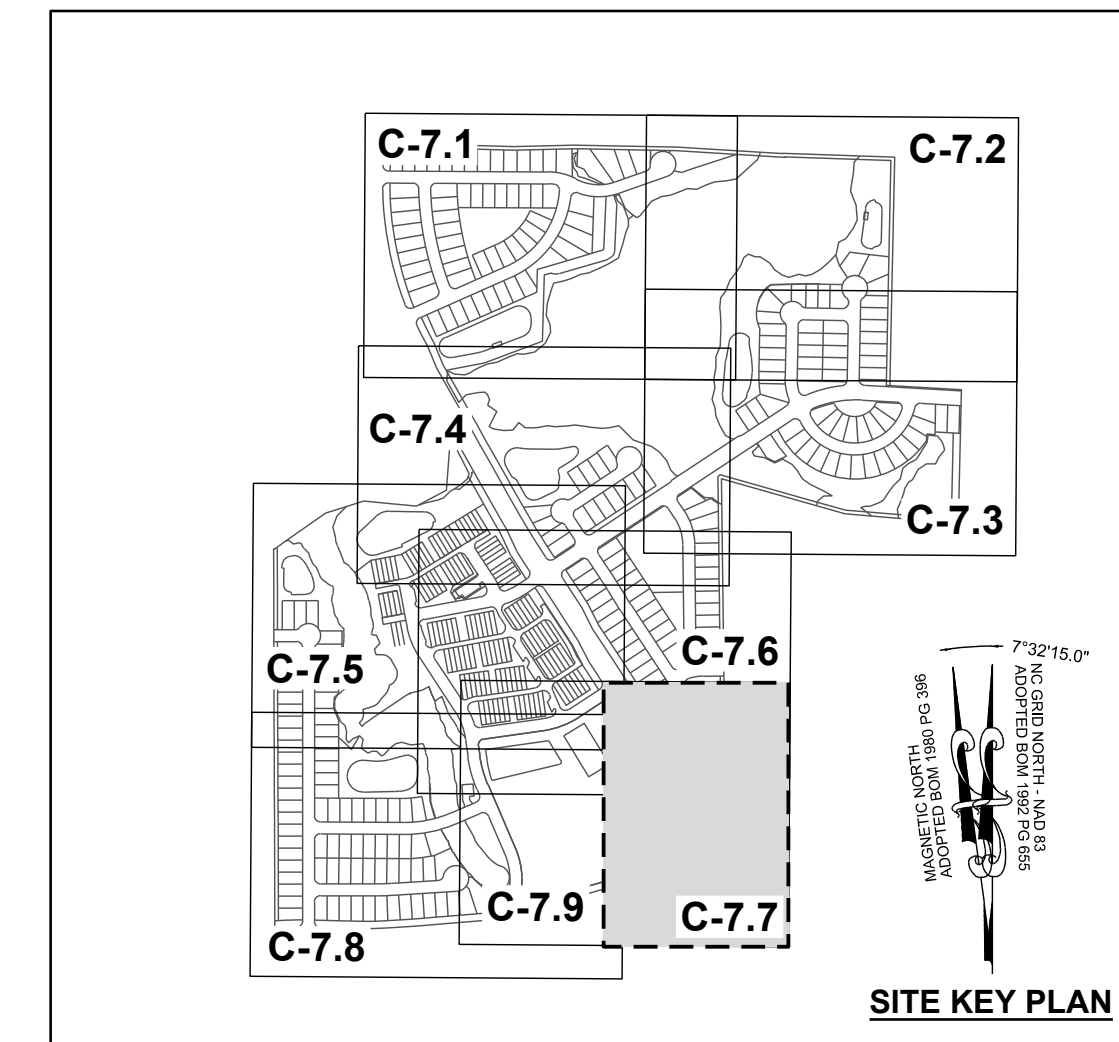
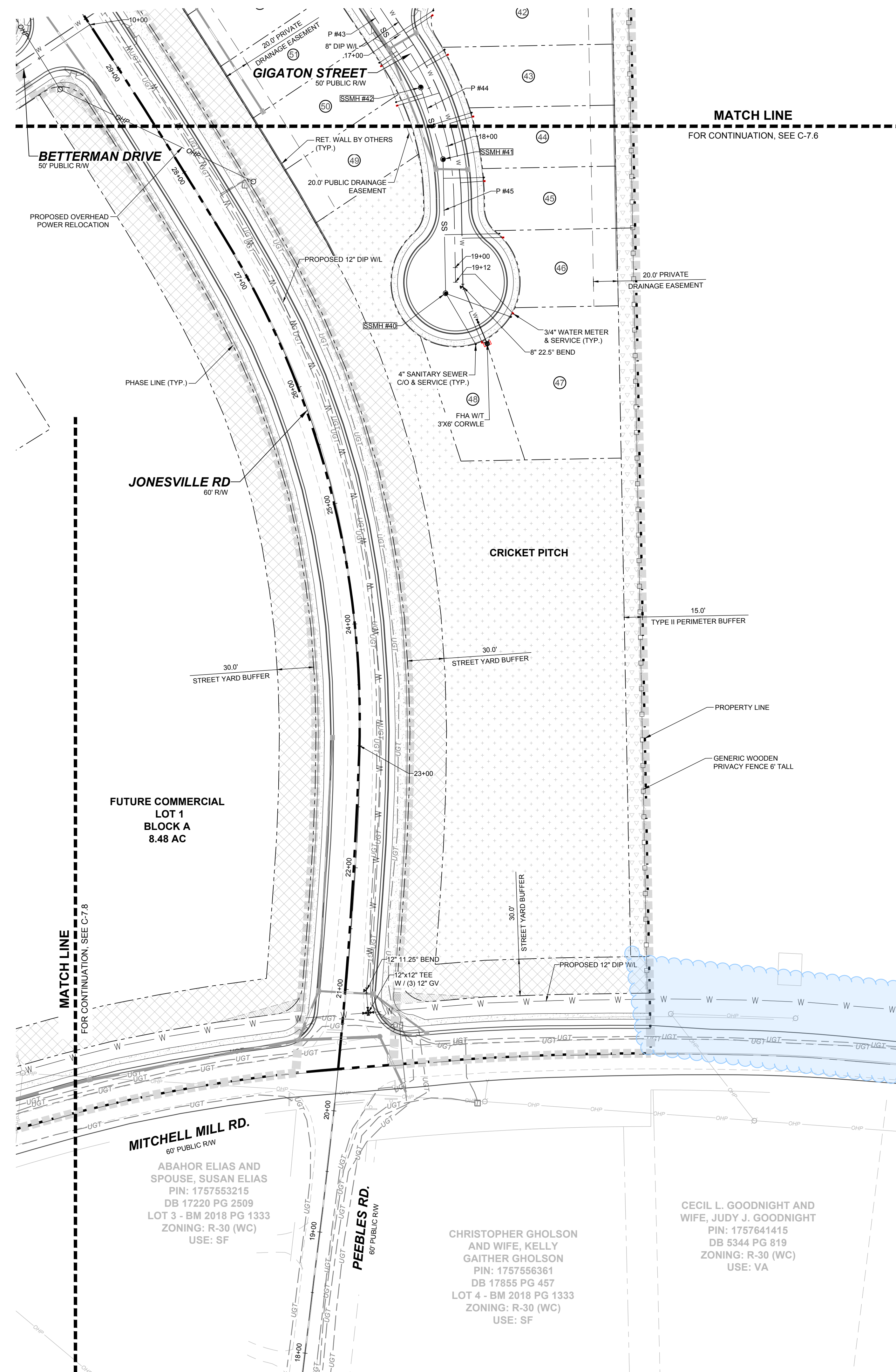
STRONG ROCK ENGINEERING GROUP, PLLC | COMPANY LICENSE # P-2166
 305 CHURCH AT NORTH HILLS STREET, SUITE 1110 RALEIGH, NC 27609 | INFORMATION@STRONGROCKGROUP.COM

STRONG ROCK PROJECT PSP-23-03	NOT FOR CONSTRUCTION	SCALE AS SHOWN	DESIGNED BY JWL	SRG	DRAWN BY JWL	CHECKED BY JWL
-------------------------------	----------------------	----------------	-----------------	-----	--------------	----------------

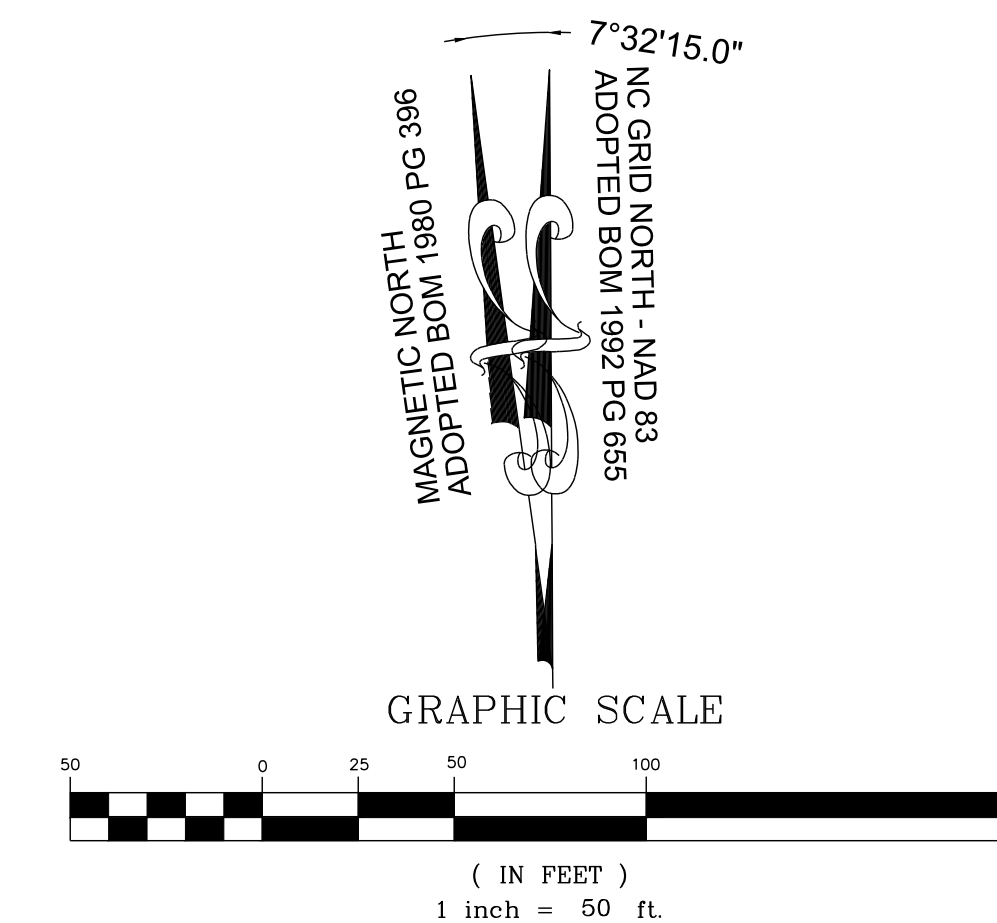
RESERVE @ MITCHELL MILL
 TOWN OF ROLESVILLE, WAKE COUNTY, NORTH CAROLINA
 PRELIMINARY SUBDIVISION PLAT
 PARTIAL UTILITY PLAN VI

DRAWING SHEET
C-7.6

THIS PLANSET AND ANY ASSOCIATED DOCUMENTS ARE PRELIMINARY AND NOT AUTHORIZED FOR CONSTRUCTION UNTIL SIGNED, DATED, AND OFFICIALLY RELEASED FOR CONSTRUCTION BY THE ENGINEER OF RECORD.



LEGEND:
SEE SHEET C-7.0 FOR LEGEND.

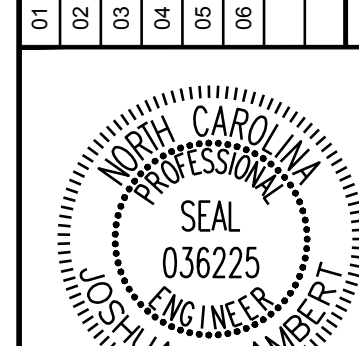


If this development is planning to install this waterline, City of Raleigh Waterline Easement should be shown on this waterline. BTW, this easement would be site and would be required to be dedicated to Raleigh with Raleigh's deed template prior to CD approval.

MATCH LINE
FOR CONTINUATION, SEE C-7.8

MATCH LINE
FOR CONTINUATION, SEE C-7.6

NO.	REVISIONS	DATE	BY
01			
02			
03			
04			
05			
06			



STRONGROCK
ENGINEERING GROUP

STRONG ROCK ENGINEERING GROUP, PLLC | COMPANY LICENSE # P-2166
305 CHURCH AT NORTH HILLS STREET, SUITE 1110 RALEIGH, NC 27609 | INFORMATION@STRONGROCKGROUP.COM

STRONG ROCK PROJECT	STRONG ROCK PROJECT PSP-23-03
NOT FOR CONSTRUCTION	NOT FOR CONSTRUCTION
SCALE	AS SHOWN
DESIGNED BY	JWL
DRAWN BY	SRG
CHECKED BY	JWL

RESERVE @ MITCHELL MILL
TOWN OF ROLESVILLE, WAKE COUNTY, NORTH CAROLINA
PRELIMINARY SUBDIVISION PLAT
PARTIAL UTILITY PLAN VII

DRAWING SHEET
C-7.7

THIS PLANSET AND ANY ASSOCIATED DOCUMENTS ARE PRELIMINARY AND NOT AUTHORIZED FOR CONSTRUCTION UNTIL SIGNED, DATED, AND OFFICIALLY RELEASED FOR CONSTRUCTION BY THE ENGINEER OF RECORD.

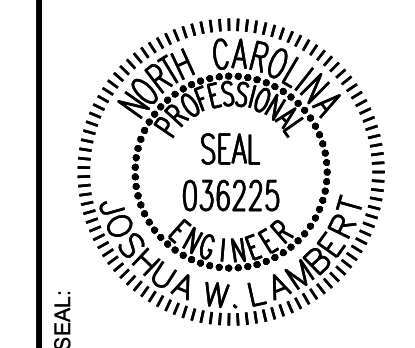


TOWNHOME NOTES:
 STATES INTERNAL TOWNHOME DRIVEWAYS ARE PRIVATE EASEMENTS AS PER CITY OF RALEIGH PUBLIC UTILITIES DEPARTMENT

LEGEND:

	WATER LINE
	FIRE HYDRANT ASSEMBLY
	GATE VALVE
	TEE
	BLOW OFF VALVE

NO.	REVISIONS	DATE	BY
01			
02			
03			
04			
05			
06			
07			
08			



STRONGROCK
 ENGINEERING GROUP
 STRONG ROCK ENGINEERING GROUP, PLLC | COMPANY LICENSE # P-2166
 305 CHURCH AT NORTH HILLS STREET, SUITE 1110 RALEIGH, NC 27609 | INFORMATION@STRONGROCKGROUP.COM

STRONG ROCK PROJECT	PSP-24-03
NOT FOR CONSTRUCTION	SCALE AS SHOWN
DESIGNED BY	JWL
DRAWN BY	SRG
CHECKED BY	JWL

RESERVE @ MITCHELL MILL
 TOWN OF ROLESVILLE, WAKE COUNTY, NORTH CAROLINA
 PRELIMINARY SUBDIVISION PLAT
 OFF-SITE UTILITY PLAN

DRAWING SHEET
C-7.11

THIS PLANSET AND ANY ASSOCIATED DOCUMENTS ARE PRELIMINARY AND NOT AUTHORIZED FOR CONSTRUCTION UNTIL SIGNED, DATED, AND OFFICIALLY RELEASED FOR CONSTRUCTION BY THE ENGINEER OF RECORD.