

UTILITY NOTES

- 1. ALL UTILITY DESIGN AND CONSTRUCTION SHALL BE IN ACCORDANCE WITH ALL CITY OF RALEIGH DEPARTMENT OF PUBLIC UTILITIES (CORPUD) STANDARDS AND SPECIFICATIONS. UTILITY DESIGN SHALL ALSO MEET FIRE FLOW REQUIREMENTS OF NCF.
2. UTILITY SIZES AND LOCATIONS ARE SHOWN FOR ILLUSTRATIVE PURPOSES ONLY AND ARE SUBJECT TO CHANGE BASED ON FINAL DESIGN AND CONSTRUCTION DRAWING APPROVAL. THIS SHALL INCLUDE BUT NOT LIMITED TO FIRE HYDRANT LOCATIONS.
3. ANY EXISTING WATER AND SEWER LINES TO BE USED AS PART OF THE FINAL DESIGN OF THE PROJECT, SHALL BE LOCATED BY SURVEY, TESTED BY A LICENSED CONTRACTOR AND APPROVED BY THE CITY OF RALEIGH INSPECTOR PRIOR TO SUBMITTAL OF CONSTRUCTION DRAWINGS.
4. AS PART OF CONSTRUCTION DRAWING SUBMITTAL, FIRE FLOW CALCULATIONS SHALL BE PROVIDED SHOWING COMPLIANCE WITH NCF. PROJECT MAY BE DEVELOPED IN PHASES AND ALL PHASES SHALL BE REQUIRED TO MEET THE MINIMUM REQUIRED FIRE FLOWS PER OCCUPANCY PROPOSED IN EACH PHASE.
5. AN APPROVED WATER SUPPLY FOR FIRE SUPPRESSION (TEMPORARY OR PERMANENT) SHALL BE PROVIDED AS SOON AS COMBUSTIBLE MATERIALS ARRIVE ON SITE.
6. UTILITY CONSTRUCTION APPROVAL IS REQUIRED FOR THIS PROJECT, PLANS TO BE PREPARED BY NC PROFESSIONAL ENGINEER.
7. RIGHT OF WAY AND/OR EASEMENT DEDICATION PLAT IS REQUIRED FOR THIS PROJECT (PRIOR TO CITY ACCEPTANCE OF UTILITIES).
8. ALL NECESSARY WETLAND, RIPARIAN BUFFER AND FLOODPLAIN PERMITS FROM USACE, NCDWQ & FEMA SHALL BE OBTAINED PRIOR TO CONSTRUCTION.
9. PROJECT SHALL EXTEND PUBLIC WATER MAINS ALONG ALL INTERIOR AND ABUTTING RIGHT OF WAYS OF DEVELOPMENT.
10. FIRE HYDRANT ASSEMBLIES SHALL BE INSTALLED AT EVERY INTERSECTION AND AT 500' (RESIDENTIAL) MAX INTERVALS ALONG SITE FRONTAGE.
11. ALL MAINS UP TO 12 INCHES IN SIZE SHALL BE DESIGNED WITH A BLOW-OFF ASSEMBLY THE SAME SIZE AS THE DIAMETER OF THE PIPE.
12. ALL WATER MAINS SHALL BE PRESSURE CLASS OR THICKNESS CLASS DUCTILE IRON PIPE DESIGNED IN ACCORDANCE WITH AWWA STANDARD C-150.
13. PROJECT SHALL EXTEND PUBLIC GRAVITY SEWER TO PERIPHERY OF DEVELOPMENT BASED ON NATURAL TOPOGRAPHY.
14. ALL CITY OF RALEIGH SANITARY SEWER EASEMENTS SHALL BE A MINIMUM OF 30 FEET.
15. THE SANITARY SEWER DESIGN SHALL BE EVALUATED DURING THE CONSTRUCTION DRAWING REVIEW TO ENSURE ADJACENT PROPERTIES HAVE ACCESS TO SANITARY SEWER WHERE FEASIBLE AND IN COMPLIANCE WITH THE CITY OF RALEIGH PUBLIC UTILITIES DEPARTMENT STANDARDS AND SPECIFICATIONS.
16. ALL OFF-SITE EASEMENTS SHALL BE ACQUIRED BY THE DEVELOPER. THESE OFF-SITE EASEMENTS SHALL BE RECORDED BY MAP AND BY DEED OF EASEMENT PRIOR TO CONSTRUCTION APPROVAL. THE EASEMENTS SHALL BE DEDICATED TO THE CITY OF RALEIGH AND ENTITLED "CITY OF RALEIGH SANITARY SEWER EASEMENT".
17. MAINTAIN APPROPRIATE COVER AND SEPARATION ON UTILITIES AND LABEL IN PROFILES; ANY UTILITY CROSSINGS ARE SUBJECT TO MINIMUM REQUIREMENTS.
18. CONSTRUCTION APPROVAL WILL BE REQUIRED FOR ANY EXTENSIONS OF PUBLIC WATER OR SEWER MAINS.
19. PLAT RECORDATION REQUIRED AFTER CONSTRUCTION APPROVAL PRIOR TO BUILDING PERMIT.
20. DOT ENCROACHMENT AGREEMENT REQUIRED.
21. PRIVATE WATER SERVICES SIZED 3/4" - 2" SHOULD BE TYPE "K" SOFT COPPER AND IN ACCORDANCE WITH PU HANDBOOK, APP. B. STANDARD WATER DETAIL W-23 AND W-25. IF WATER METERS CANNOT BE LOCATED WITHIN THE RIGHT-OF-WAY THEY MUST BE WITHIN RECORDED "CITY OF RALEIGH WATERLINE EASEMENTS".

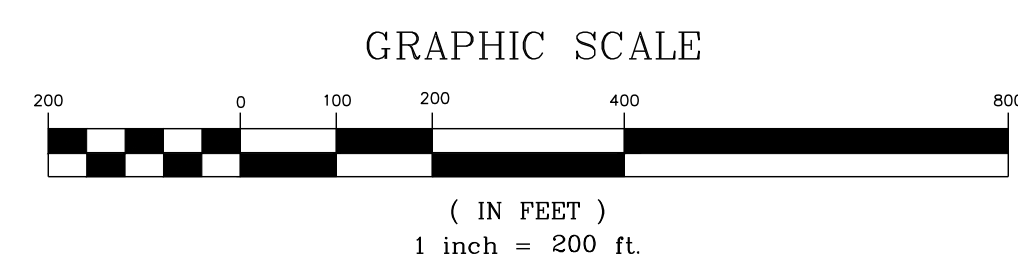
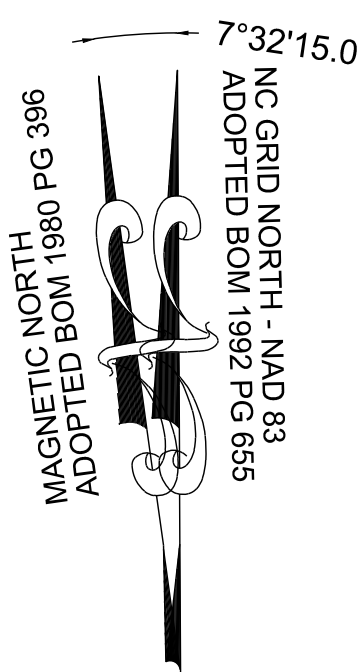
CORPUD STANDARD UTILITY NOTES:

STANDARD UTILITY NOTES (AS APPLICABLE):

- 1. ALL MATERIALS & CONSTRUCTION METHODS SHALL BE IN ACCORDANCE WITH CITY OF RALEIGH DESIGN STANDARDS, DETAILS & SPECIFICATIONS (REFERENCE: CORPUD HANDBOOK, CURRENT EDITION).
2. UTILITY SEPARATION REQUIREMENTS:
a) A DISTANCE OF 100' SHALL BE MAINTAINED BETWEEN SANITARY SEWER & ANY PRIVATE OR PUBLIC WATER SUPPLY SOURCE SUCH AS AN IMPOUNDED RESERVOIR USED AS A SOURCE OF DRINKING WATER. IF ADEQUATE LATERAL SEPARATION CANNOT BE ACHIEVED, FERROUS SANITARY SEWER PIPE SHALL BE SPECIFIED & INSTALLED TO WATERLINE SPECIFICATIONS. HOWEVER, THE MINIMUM SEPARATION SHALL NOT BE LESS THAN 25' FROM A PRIVATE WELL OR 50' FROM A PUBLIC WELL.
b) WHEN INSTALLING WATER &/OR SEWER MAINS, THE HORIZONTAL SEPARATION BETWEEN UTILITIES SHALL BE 10'. IF THIS SEPARATION CANNOT BE MAINTAINED DUE TO EXISTING CONDITIONS, THE VARIATION ALLOWED IS THE WATER MAIN IN A SEPARATE TRENCH WITH THE ELEVATION OF THE WATER MAIN AT LEAST 18" ABOVE THE TOP OF THE SEWER & MUST BE APPROVED BY THE PUBLIC UTILITIES DIRECTOR. ALL DISTANCES ARE MEASURED FROM OUTSIDE DIAMETER TO OUTSIDE DIAMETER.
c) WHERE IT IS IMPOSSIBLE TO OBTAIN PROPER SEPARATION, OR ANYTIME A SANITARY SEWER PASSES OVER A WATERMAIN, PVC MATERIALS OR STEEL ENCASUREMENT EXTENDED 10' ON EACH SIDE OF CROSSING MUST BE SPECIFIED & INSTALLED TO WATERLINE SPECIFICATIONS.
d) 5.0' MINIMUM HORIZONTAL SEPARATION IS REQUIRED BETWEEN ALL SANITARY SEWER & STORM SEWER FACILITIES, UNLESS PVC MATERIAL IS SPECIFIED FOR SANITARY SEWER.
e) MAINTAIN 18" MIN. VERTICAL SEPARATION AT ALL WATERMAIN & RCP STORM DRAIN CROSSINGS. MAINTAIN 24" MIN. VERTICAL SEPARATION AT ALL SANITARY SEWER & RCP STORM DRAIN CROSSINGS. WHERE ADEQUATE SEPARATIONS CANNOT BE ACHIEVED, SPECIFY PVC MATERIALS & A CONCRETE CRADLE HAVING 6" MIN. CLEARANCE (PER CORPUD DETAILS W-41 & S-49).
f) ALL OTHER UNDERGROUND UTILITIES SHALL CROSS WATER & SEWER FACILITIES WITH 18" MIN. VERTICAL SEPARATION REQUIRED.
3. ANY NECESSARY FIELD REVISIONS ARE SUBJECT TO REVIEW & APPROVAL OF AN AMENDED PLAN &/OR PROFILE BY THE CITY OF RALEIGH PUBLIC UTILITIES DEPARTMENT PRIOR TO CONSTRUCTION.
4. CONTRACTOR SHALL MAINTAIN CONTINUOUS WATER & SEWER SERVICE TO EXISTING RESIDENCES & BUSINESSES THROUGHOUT CONSTRUCTION OF PROJECT. ANY NECESSARY SERVICE INTERRUPTIONS SHALL BE PRECEDED BY A 24 HOUR ADVANCE NOTICE TO THE CITY OF RALEIGH PUBLIC UTILITIES DEPARTMENT.
5. 3.0' MINIMUM COVER IS REQUIRED ON ALL WATER MAINS & SEWER FORCEMAINS. 4.0' MINIMUM COVER IS REQUIRED ON ALL REUSE MAINS.
6. IT IS THE DEVELOPER'S RESPONSIBILITY TO ABANDON OR REMOVE EXISTING WATER & SEWER SERVICES NOT BEING USED IN REDEVELOPMENT OF A SITE UNLESS OTHERWISE DIRECTED BY THE CITY OF RALEIGH PUBLIC UTILITIES DEPARTMENT. THIS INCLUDES ABANDONING TAP AT MAIN & REMOVAL OF SERVICE FROM ROW OR EASEMENT PER CORPUD HANDBOOK PROCEDURE.
7. INSTALL 3/4" COPPER WATER SERVICES WITH METERS LOCATED AT ROW OR WITHIN A 2'x2' WATERLINE EASEMENT IMMEDIATELY ADJACENT. NOTE: IT IS THE APPLICANT'S RESPONSIBILITY TO PROPERLY SIZE THE WATER SERVICE FOR EACH CONNECTION TO PROVIDE ADEQUATE FLOW & PRESSURE.
8. INSTALL 4" PVC SEWER SERVICES @ 1.0% MINIMUM GRADE WITH CLEANOUTS LOCATED AT ROW OR EASEMENT LINE & SPACED EVERY 75 LINEAR FEET MAXIMUM.
9. PRESSURE REDUCING VALVES ARE REQUIRED ON ALL WATER SERVICES EXCEEDING 80 PSI. BACKWATER VALVES ARE REQUIRED ON ALL SANITARY SEWER SERVICES HAVING BUILDING DRAINS LOWER THAN 1.0' ABOVE THE NEXT UPSTREAM MANHOLE.
10. ALL ENVIRONMENTAL PERMITS APPLICABLE TO THE PROJECT MUST BE OBTAINED FROM NCDWQ, USACE &/OR FEMA FOR ANY RIPARIAN BUFFER, WETLAND &/OR FLOODPLAIN IMPACTS (RESPECTIVELY) PRIOR TO CONSTRUCTION.
11. NCDOT / RAILROAD ENCROACHMENT AGREEMENTS ARE REQUIRED FOR ANY UTILITY WORK (INCLUDING MAIN EXTENSIONS & SERVICE TAPS) WITHIN STATE OR RAILROAD ROW PRIOR TO CONSTRUCTION.
12. GREASE INTERCEPTOR / OIL WATER SEPARATOR SIZING CALCULATIONS & INSTALLATION SPECIFICATIONS SHALL BE APPROVED BY THE CORPUD FOG PROGRAM COORDINATOR PRIOR TO ISSUANCE OF A BUILDING PERMIT. CONTACT TIM BEASLEY AT (919) 996-2334 OR TIMOTHY.BEASLEY@RALEIGHNC.GOV FOR MORE INFORMATION.
13. CROSS-CONNECTION CONTROL PROTECTION DEVICES ARE REQUIRED BASED ON DEGREE OF HEALTH HAZARD INVOLVED AS LISTED IN APPENDIX-B OF THE RULES GOVERNING PUBLIC WATER SYSTEMS IN NORTH CAROLINA. THESE GUIDELINES ARE THE MINIMUM REQUIREMENTS. THE DEVICES SHALL MEET AMERICAN SOCIETY OF SANITARY ENGINEERING (ASSE) STANDARDS OR BE ON THE UNIVERSITY OF SOUTHERN CALIFORNIA APPROVAL LIST. THE DEVICES SHALL BE INSTALLED AND TESTED (BOTH INITIAL AND PERIODIC TESTING THEREAFTER) IN ACCORDANCE WITH THE MANUFACTURER'S RECOMMENDATIONS OR THE LOCAL CROSS-CONNECTION CONTROL PROGRAM, WHICHEVER IS MORE STRINGENT. CONTACT JOANIE HARTLEY AT (919) 996-5923 OR JOANIE.HARTLEY@RALEIGHNC.GOV FOR MORE INFORMATION.

LEGEND:

- W WATER LINE
SS SANITARY SEWER LINE
Water Meter / Service
Sanitary Cleanout / Service
Fire Hydrant Assembly
Gate Valve
TEE
CROSS
BLOW OFF VALVE
SANITARY MANHOLE

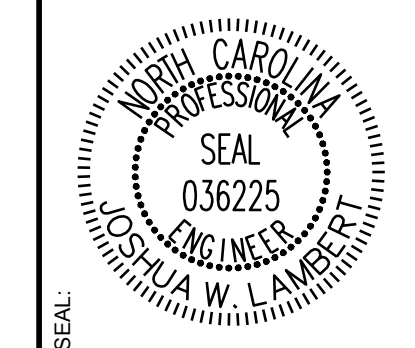


NOTES: SEE SHEET C-3.0 FOR ADJACENT PROPERTY DETAILS

TOWNHOME NOTES: STATES INTERNAL TOWNHOME DRIVEWAYS ARE PRIVATE EASEMENTS AS PER CITY OF RALEIGH PUBLIC UTILITIES DEPARTMENT

THIS PLANSET AND ANY ASSOCIATED DOCUMENTS ARE PRELIMINARY AND NOT AUTHORIZED FOR CONSTRUCTION UNTIL SIGNED, DATED, AND OFFICIALLY RELEASED FOR CONSTRUCTION BY THE ENGINEER OF RECORD.

Table with columns: No., REVISIONS, DATE, BY. Contains a list of revision entries.



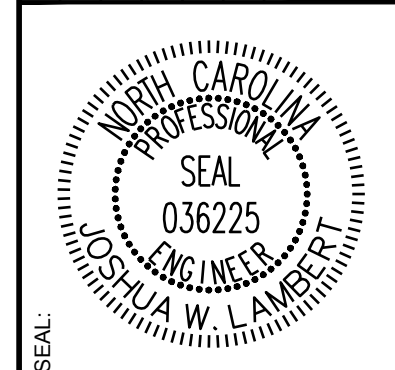
STRONGROCK ENGINEERING GROUP logo and contact information: STRONG ROCK ENGINEERING GROUP, PLLC | COMPANY LICENSE # P-2166 | 305 CHURCH AT NORTH HILLS STREET, SUITE 1110 RALEIGH, NC 27609 | INFORMATION@STRONGROCKGROUP.COM

Table with columns: STRONG ROCK PROJECT, NOT FOR CONSTRUCTION, SCALE, DESIGNED BY, DRAWN BY, CHECKED BY. Contains project identification details.

RESERVE @ MITCHELL MILL TOWN OF ROLESVILLE, WAKE COUNTY, NORTH CAROLINA CONSTRUCTION PLANS OVERALL UTILITY PLAN

DRAWING SHEET C-8.0

NO.	REVISIONS	DATE	BY
1			
2			



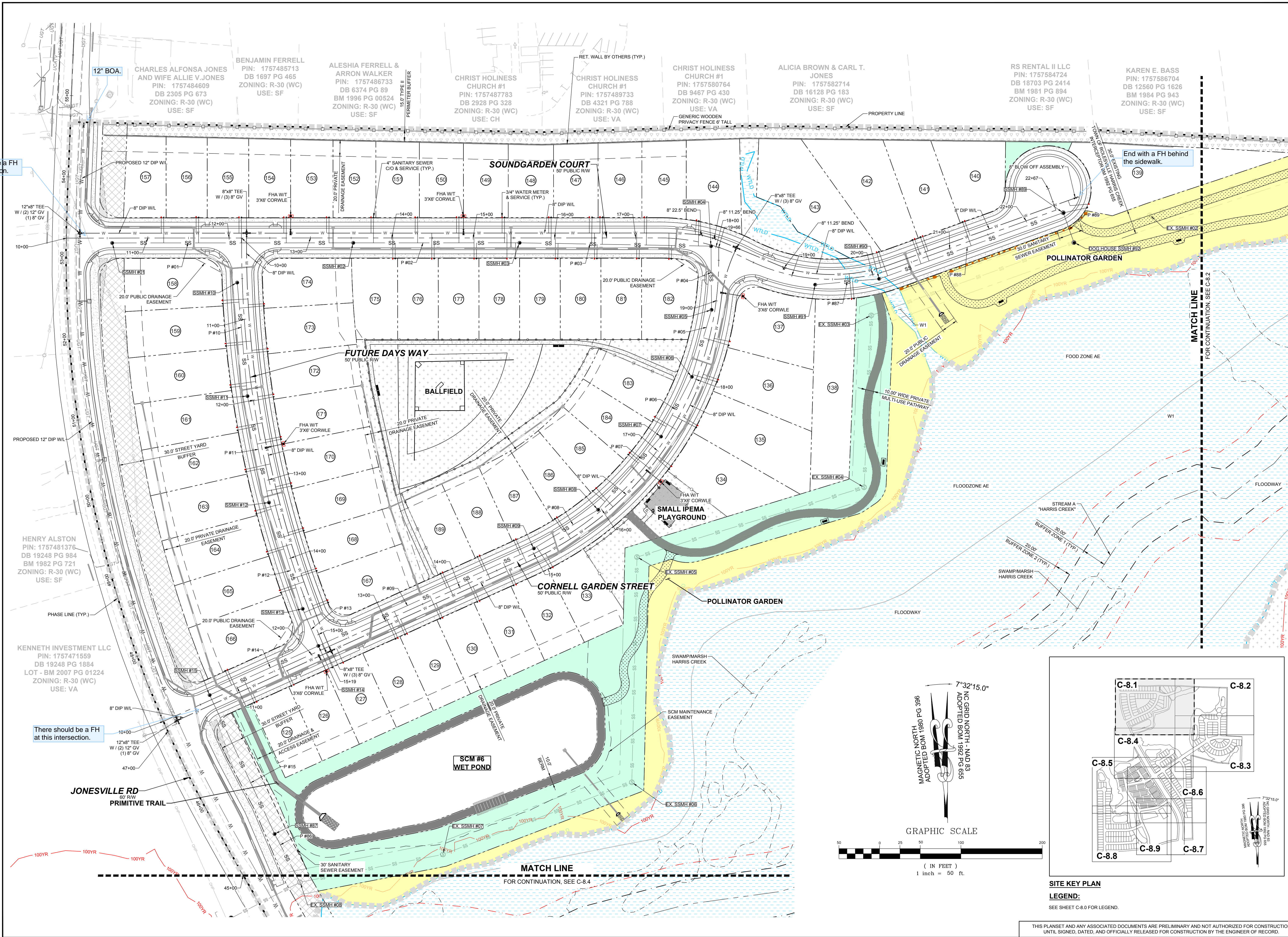
**STRONGROCK**  
ENGINEERING GROUP

STRONG ROCK ENGINEERING GROUP, PLLC | COMPANY LICENSE # P-2166  
305 CHURCH AT NORTH HILLS STREET, SUITE 1110 RALEIGH, NC 27609 | INFORMATION@STRONGROCKGROUP.COM

STRONG ROCK PROJECT	STRONG ROCK PROJECT P-2166-03
NOT FOR CONSTRUCTION	
SCALE	AS SHOWN
DESIGNED BY	JWL
DRAWN BY	SRG
CHECKED BY	JWL

RESERVE @ MITCHELL MILL  
TOWN OF ROLESVILLE, WAKE COUNTY, NORTH CAROLINA  
CONSTRUCTION PLANS  
PARTIAL UTILITY PLAN I

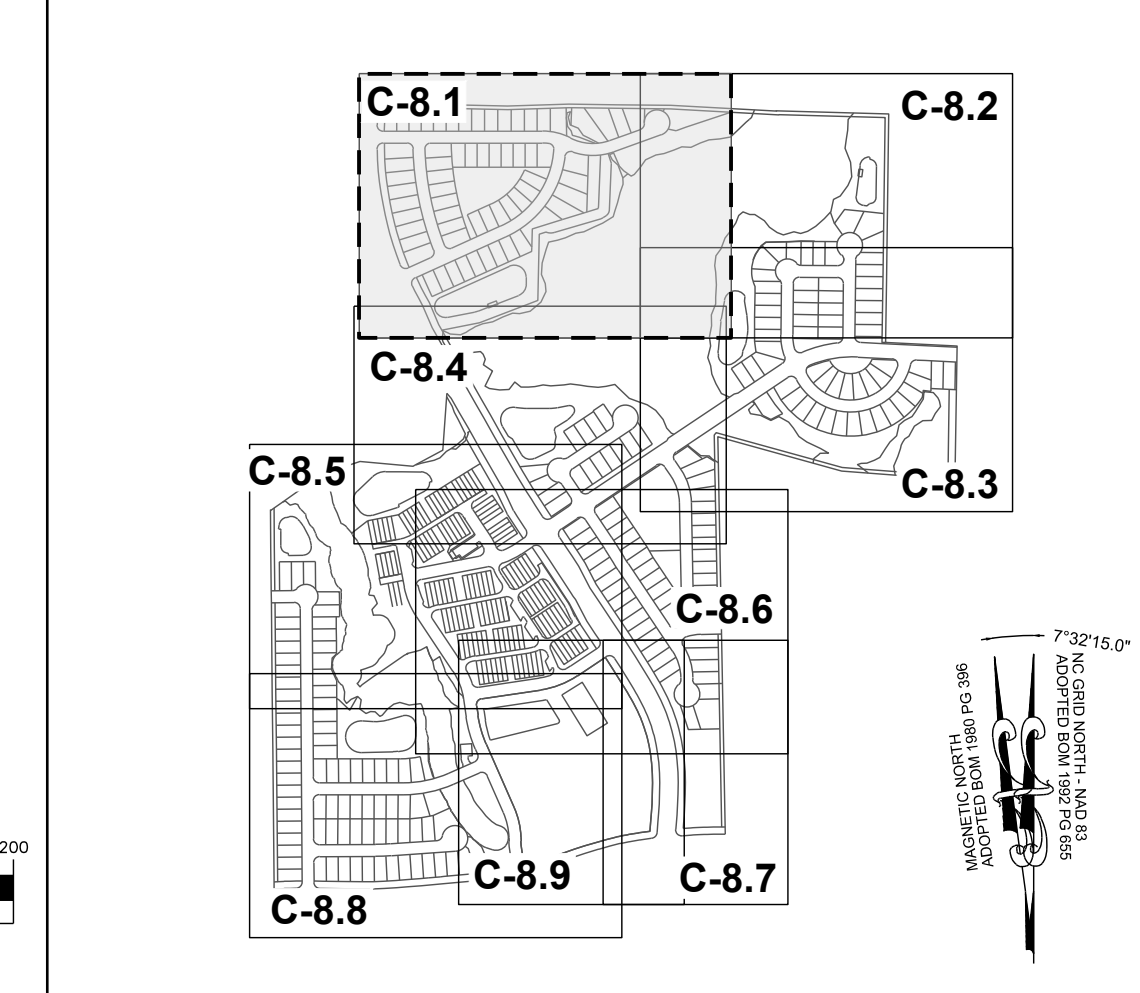
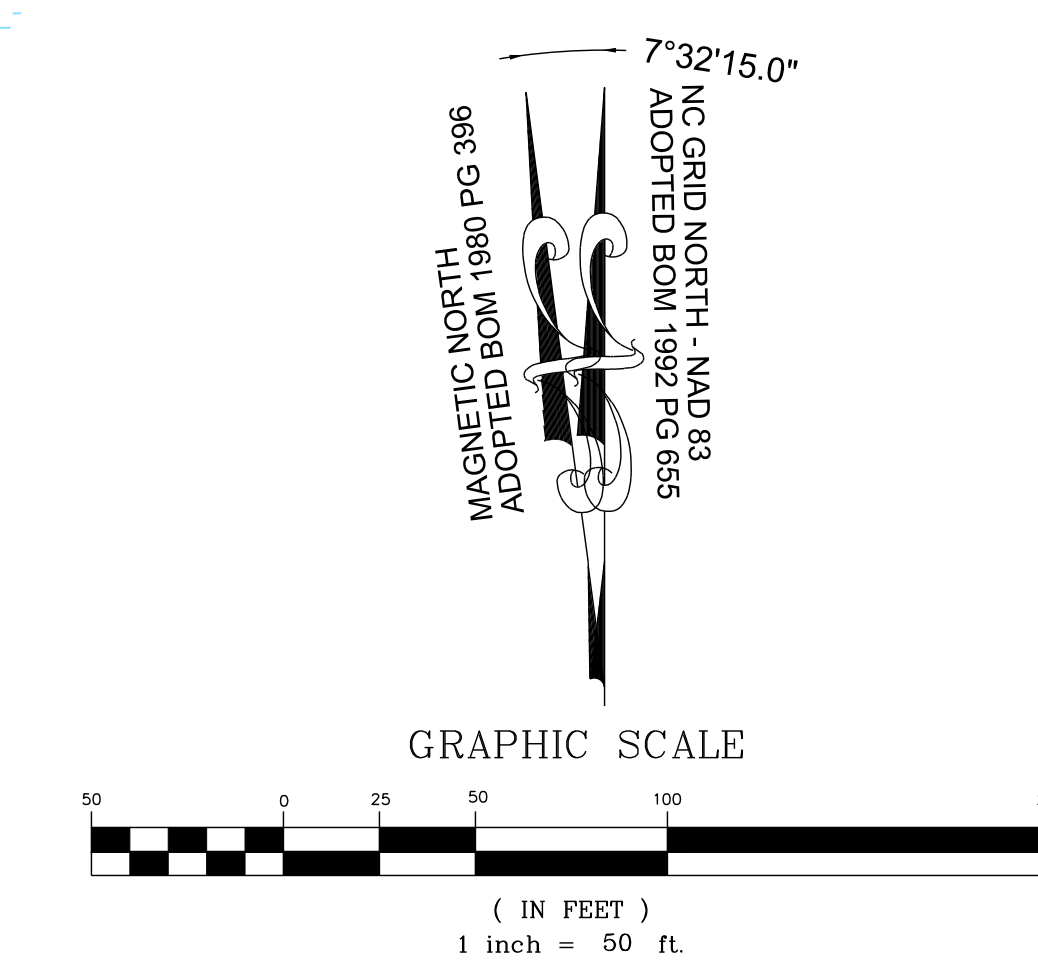
DRAWING SHEET  
**C-8.1**



There should be a FH at this intersection.

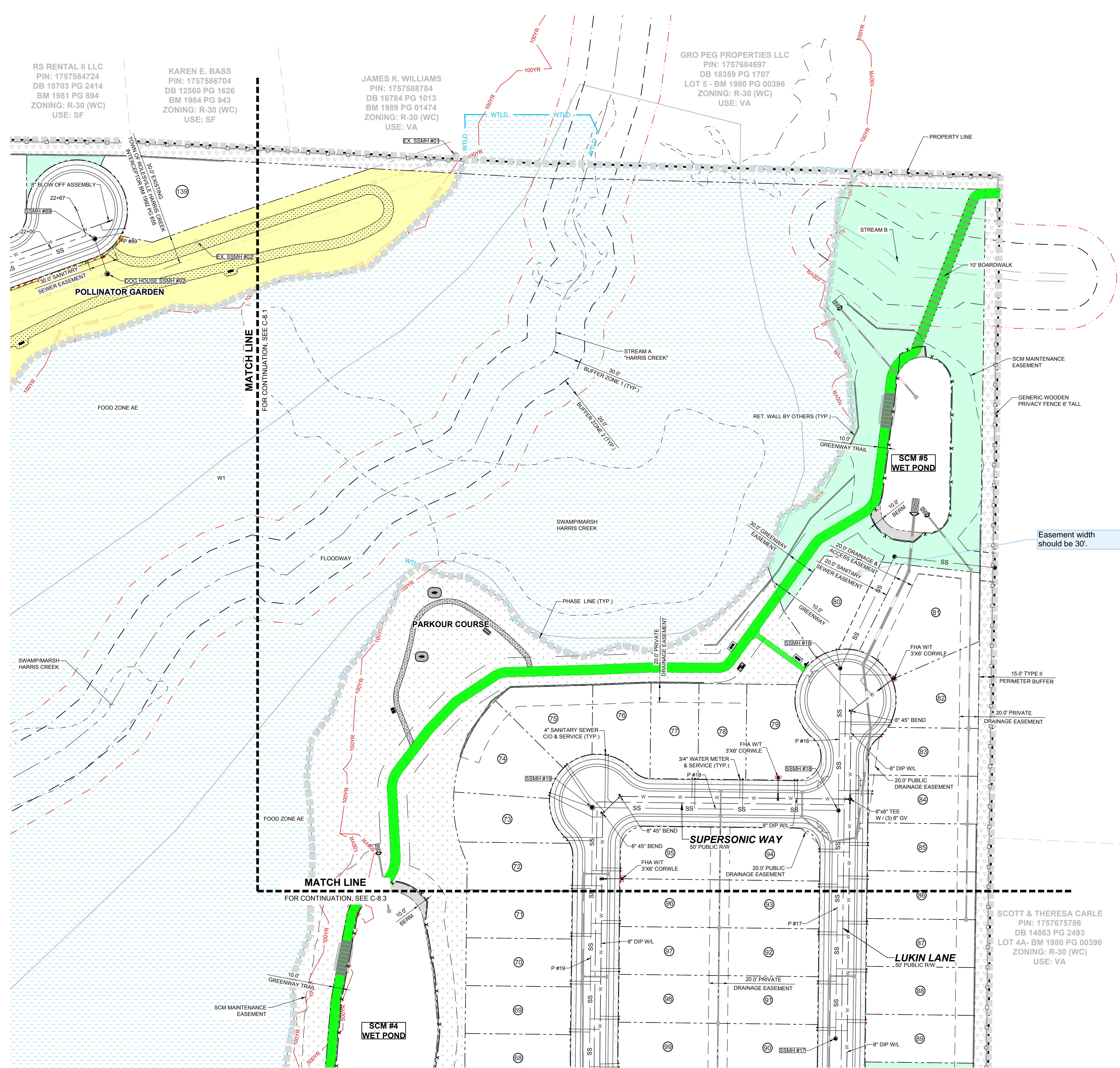
End with a FH behind the sidewalk.

There should be a FH at this intersection.



**SITE KEY PLAN**  
**LEGEND:**  
SEE SHEET C-8.0 FOR LEGEND.

THIS PLANSET AND ANY ASSOCIATED DOCUMENTS ARE PRELIMINARY AND NOT AUTHORIZED FOR CONSTRUCTION UNTIL SIGNED, DATED, AND OFFICIALLY RELEASED FOR CONSTRUCTION BY THE ENGINEER OF RECORD.



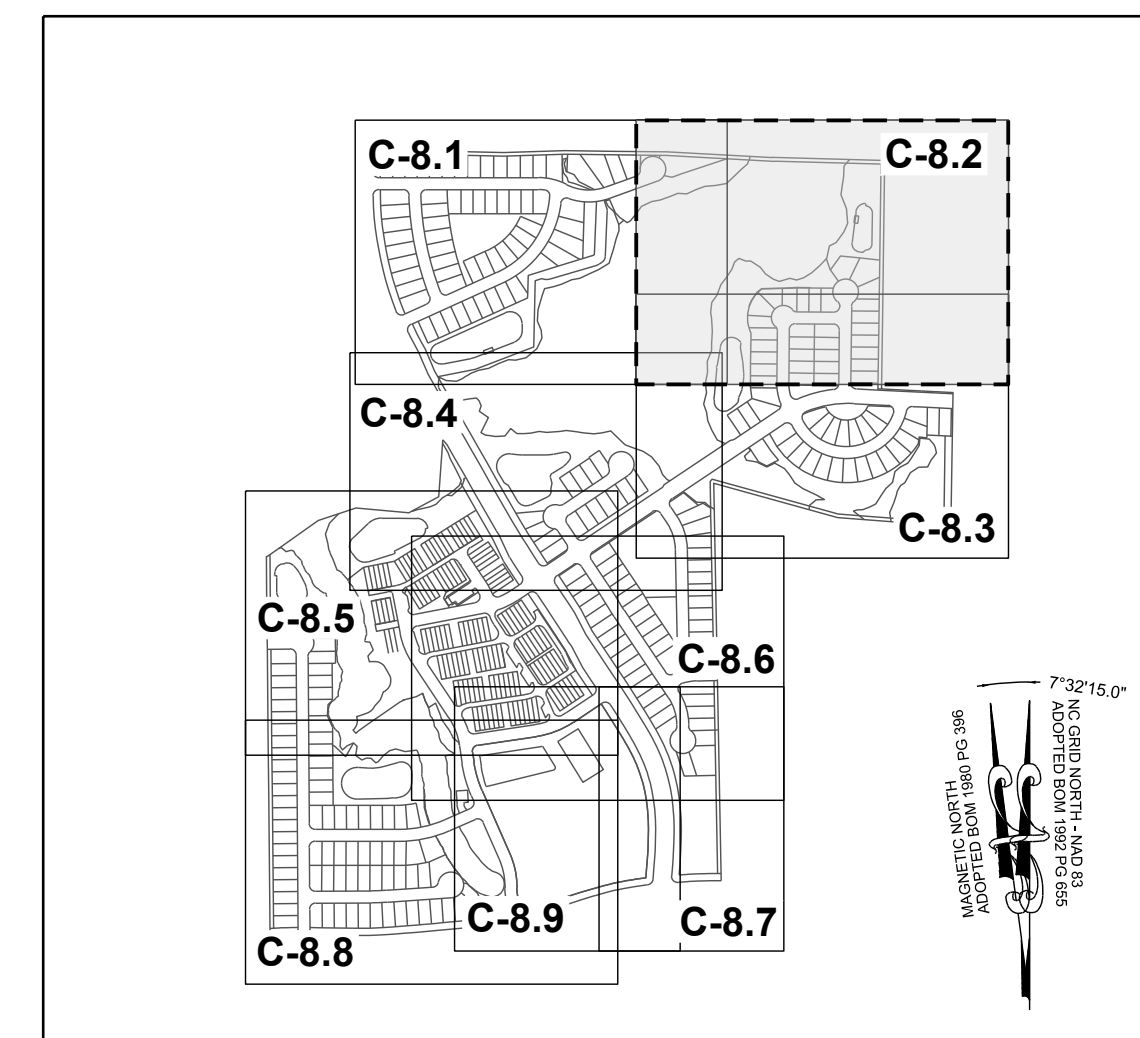
RS RENTAL II LLC  
 PIN: 1757584724  
 DB 18703 PG 2414  
 BM 1981 PG 894  
 ZONING: R-30 (WC)  
 USE: SF

KAREN E. BASS  
 PIN: 1757586704  
 DB 12560 PG 1626  
 BM 1984 PG 943  
 ZONING: R-30 (WC)  
 USE: SF

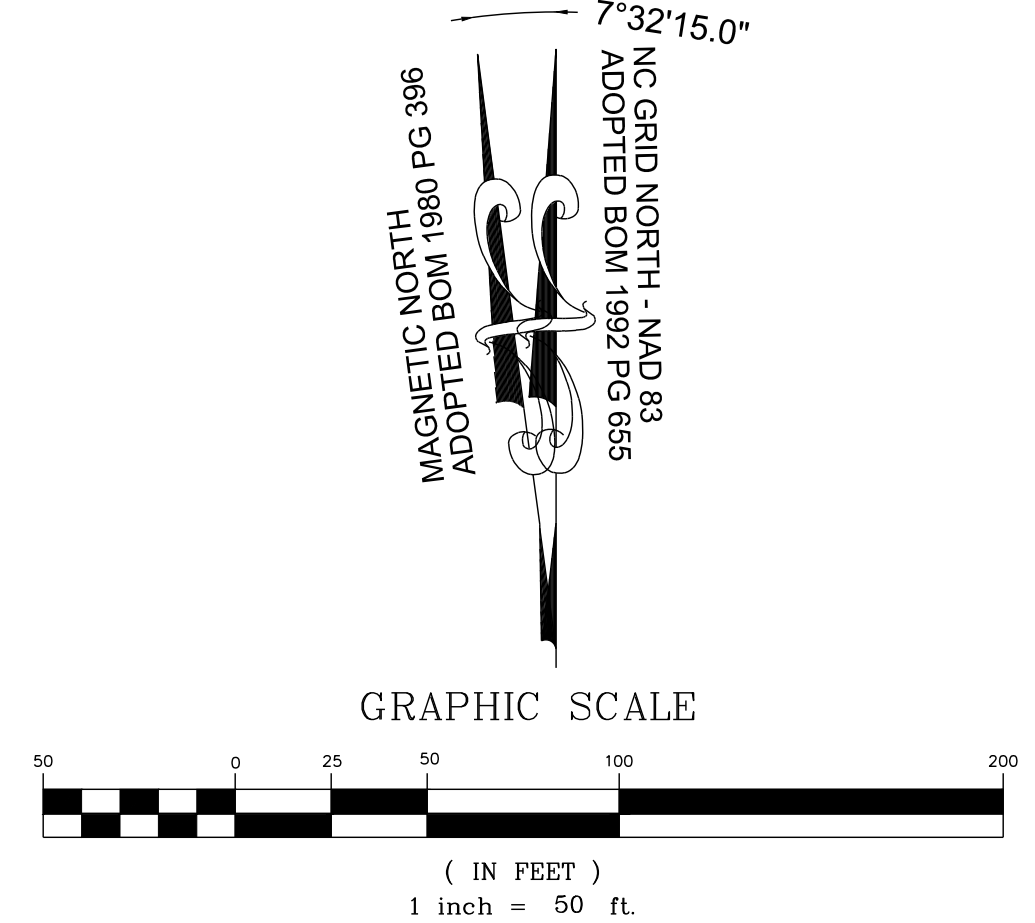
JAMES K. WILLIAMS  
 PIN: 1757588784  
 DB 16784 PG 1013  
 BM 1989 PG 01474  
 ZONING: R-30 (WC)  
 USE: VA

GRO PEG PROPERTIES LLC  
 PIN: 1757684697  
 DB 18359 PG 1707  
 LOT 5 - BM 1980 PG 00396  
 ZONING: R-30 (WC)  
 USE: VA

SCOTT & THERESA CARLE  
 PIN: 1757675786  
 DB 14863 PG 2493  
 LOT 4A - BM 1980 PG 00396  
 ZONING: R-30 (WC)  
 USE: VA



**SITE KEY PLAN**  
**LEGEND:**  
 SEE SHEET C-8.0 FOR LEGEND.



NO.	REVISIONS	DATE	BY
1			
2			

**STRONGROCK**  
 ENGINEERING GROUP

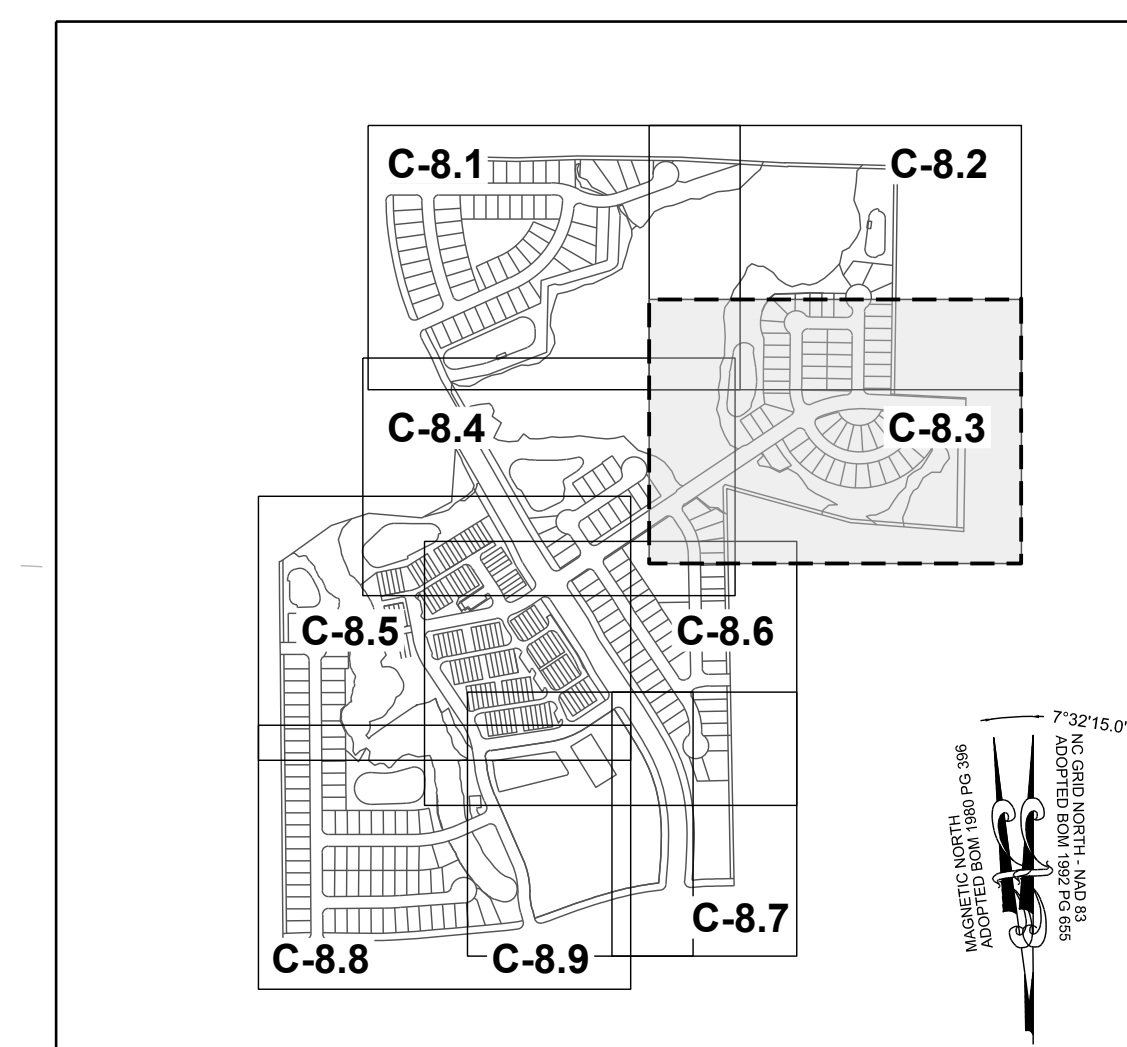
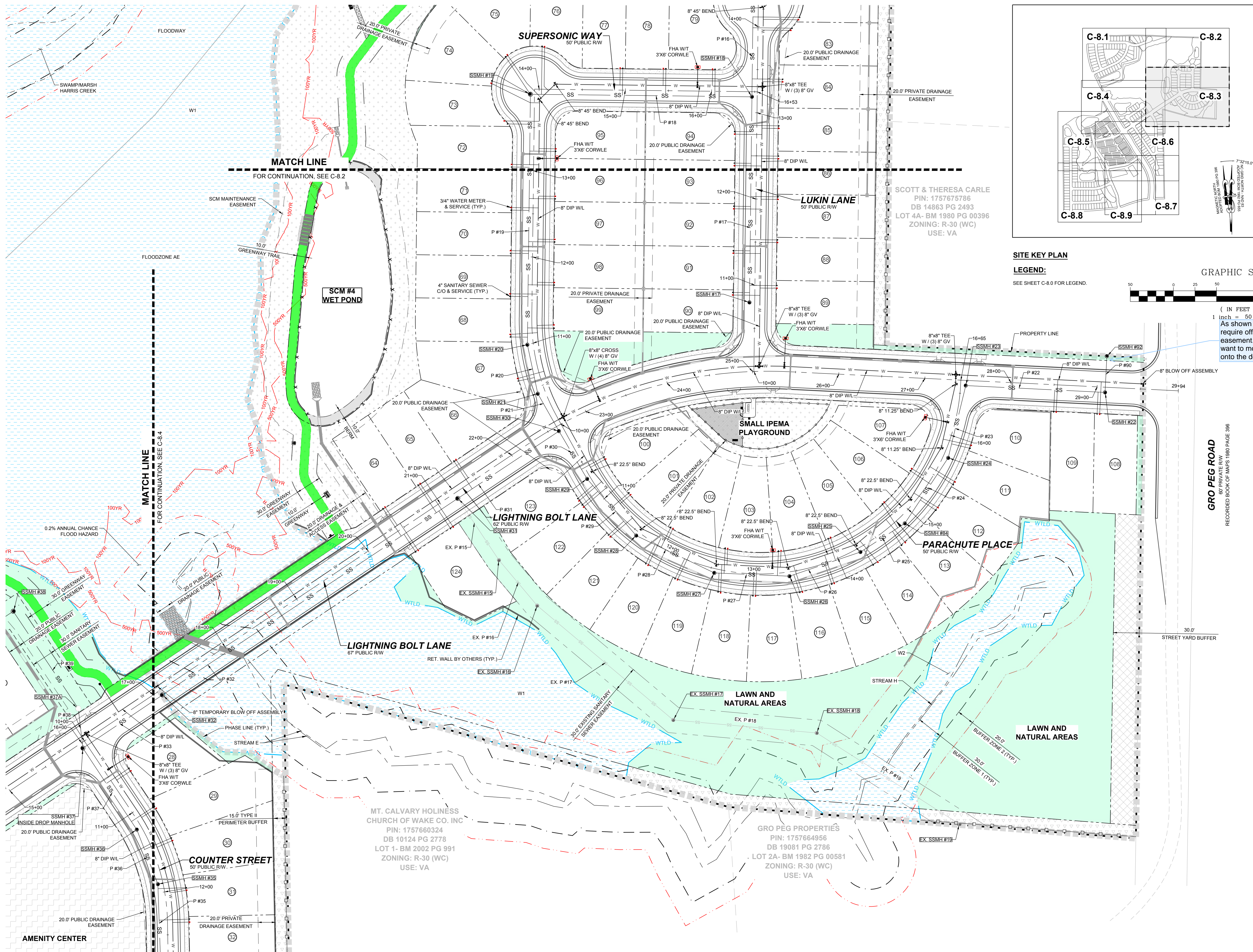
STRONG ROCK ENGINEERING GROUP, PLLC | COMPANY LICENSE # P-2166  
 305 CHURCH AT NORTH HILLS STREET, SUITE 1110 RALEIGH, NC 27609 | INFORMATION@STRONGROCKGROUP.COM

DESIGNED BY: JWL  
 DRAWN BY: SRG  
 CHECKED BY: JWL

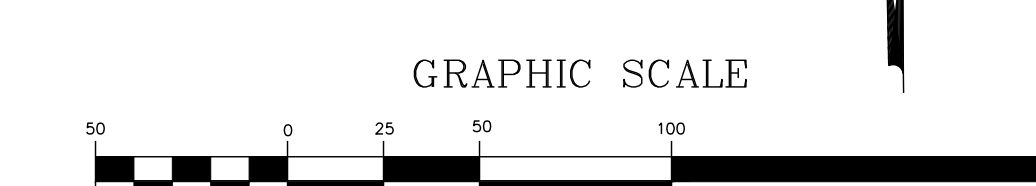
RESERVE @ MITCHELL MILL  
 TOWN OF ROLESVILLE, WAKE COUNTY, NORTH CAROLINA  
 CONSTRUCTION PLANS  
 PARTIAL UTILITY PLAN II

DRAWING SHEET  
**C-8.2**

THIS PLANSET AND ANY ASSOCIATED DOCUMENTS ARE PRELIMINARY AND NOT AUTHORIZED FOR CONSTRUCTION UNTIL SIGNED, DATED, AND OFFICIALLY RELEASED FOR CONSTRUCTION BY THE ENGINEER OF RECORD.



**SITE KEY PLAN**  
**LEGEND:**  
 SEE SHEET C-8.0 FOR LEGEND.



( IN FEET )  
 1 inch = 50 ft  
 As shown this would require offsite easement. You may want to move this MH onto the dev property.

**GRO PEG ROAD**  
 60' PRIVATE EASEMENT  
 RECORDED BOOK OF MAPS 1989 PAGE 396

MAGNETIC NORTH 1980 PG 396  
 ADOPTED BOM 1992 PG 655  
 7°32'15.0"

NO.	DATE	REVISIONS
1	11/01/2024	CONSTRUCTION INFRASTRUCTURE DRAWINGS CDD-24-04
2		TOWN OF ROLESVILLE CDD-24-04

**STRONGROCK**  
 ENGINEERING GROUP  
 STRONG ROCK ENGINEERING GROUP, PLLC | COMPANY LICENSE # P-2766  
 305 CHURCH AT NORTH HILLS STREET, SUITE 1110 RALEIGH, NC 27609 | INFORMATION@STRONGROCKGROUP.COM

STRONG ROCK PROJECT	DESIGNED BY	JWL
PSP-24-03	DRAWN BY	SRG
NOT FOR CONSTRUCTION	CHECKED BY	JWL
SCALE AS SHOWN		

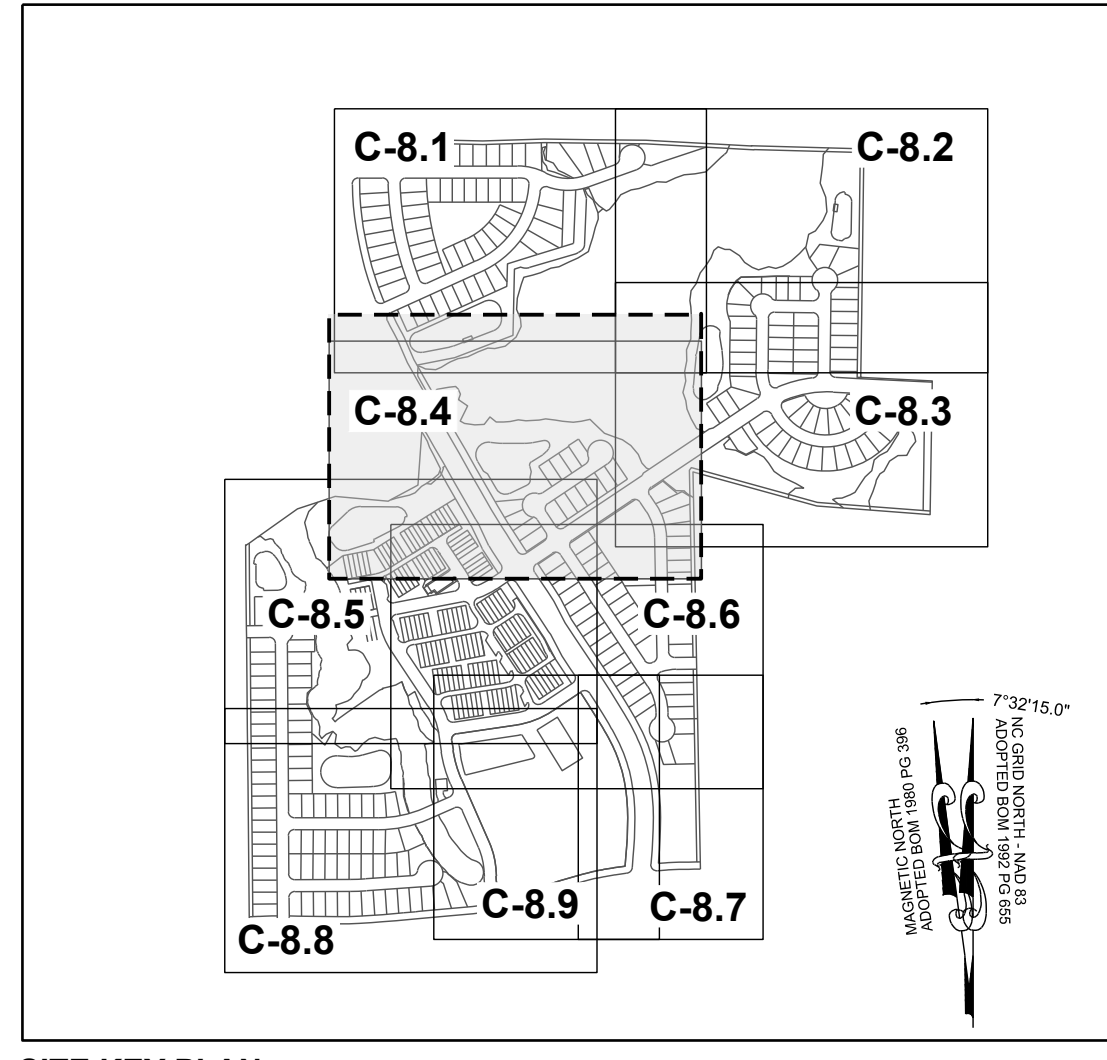
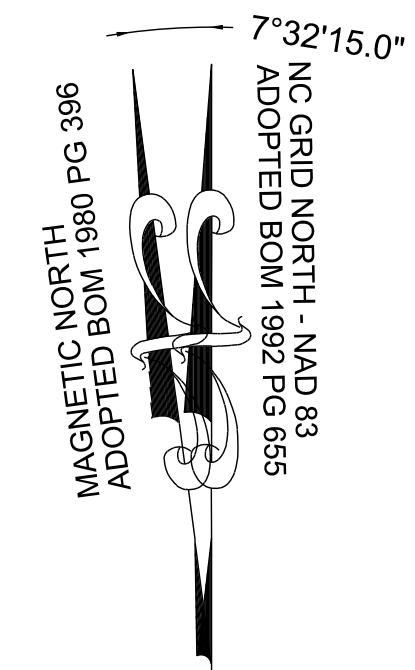
**RESERVE @ MITCHELL MILL**  
 TOWN OF ROLESVILLE, WAKE COUNTY, NORTH CAROLINA  
**CONSTRUCTION PLANS**  
**PARTIAL UTILITY PLAN III**

DRAWING SHEET  
**C-8.3**

THIS PLANSET AND ANY ASSOCIATED DOCUMENTS ARE PRELIMINARY AND NOT AUTHORIZED FOR CONSTRUCTION UNTIL SIGNED, DATED, AND OFFICIALLY RELEASED FOR CONSTRUCTION BY THE ENGINEER OF RECORD.

**TOWNHOME NOTES:**  
STATES INTERNAL TOWNHOME DRIVEWAYS ARE PRIVATE EASEMENTS AS PER CITY OF RALEIGH PUBLIC UTILITIES DEPARTMENT

**LEGEND:**  
SEE SHEET C-8.0 FOR LEGEND.



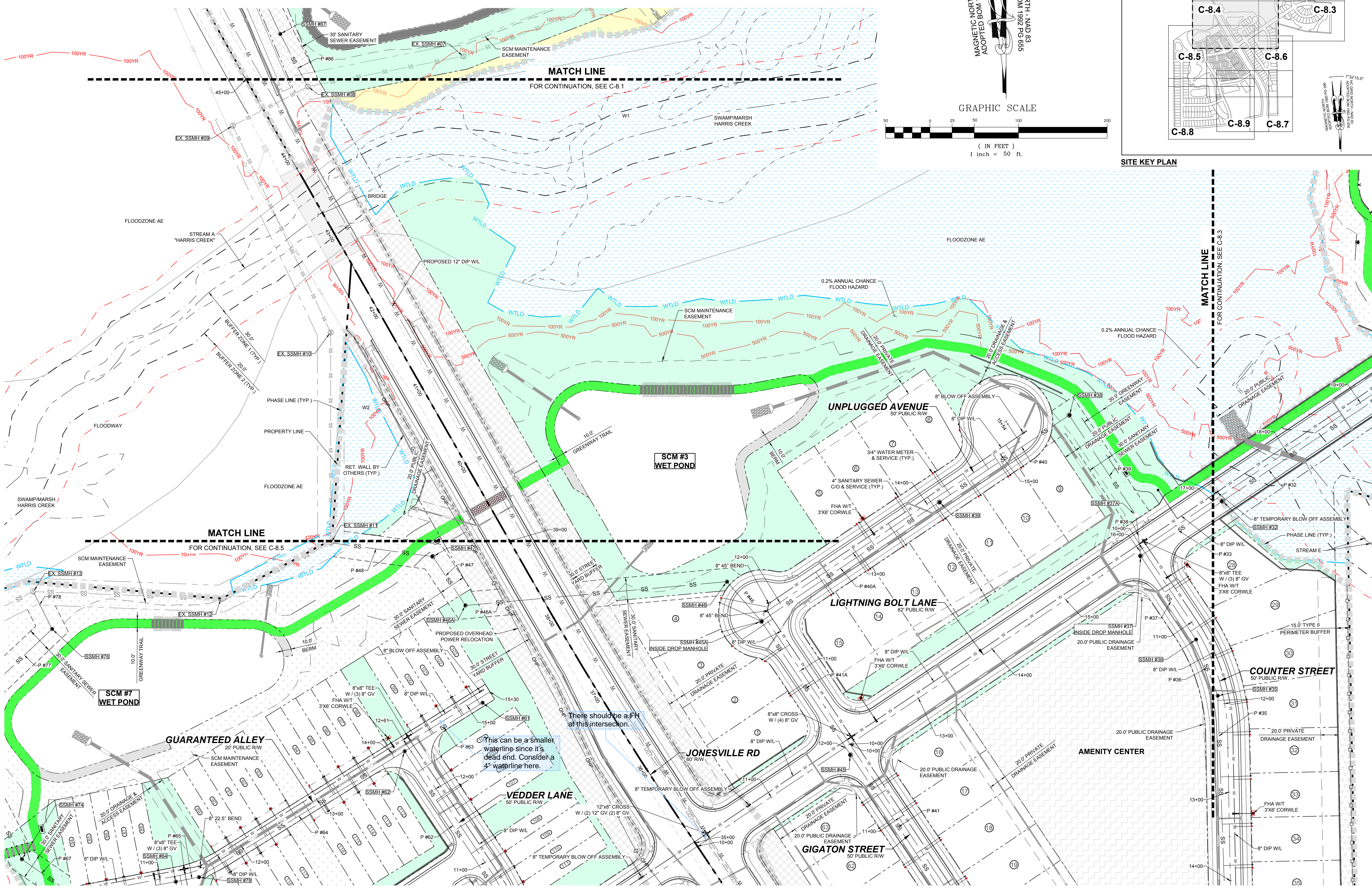
NO.	REVISIONS	DATE	BY
1			
2			

**STRONGROCK ENGINEERING GROUP**  
 PROFESSIONAL SEAL  
 036225  
 W. LAMBERT, P.E.  
 NORTH CAROLINA

STRONG ROCK PROJECT	STRONG ROCK PROJECT
PSP-25-03	PSP-25-03
NOT FOR CONSTRUCTION	NOT FOR CONSTRUCTION
SCALE AS SHOWN	SCALE AS SHOWN
DESIGNED BY JWL	DESIGNED BY JWL
DRAWN BY SRG	DRAWN BY SRG
CHECKED BY JWL	CHECKED BY JWL

**RESERVE @ MITCHELL MILL**  
 TOWN OF ROLESVILLE, WAKE COUNTY, NORTH CAROLINA  
**CONSTRUCTION PLANS**  
**PARTIAL UTILITY PLAN VI**

DRAWING SHEET  
**C-8.4**

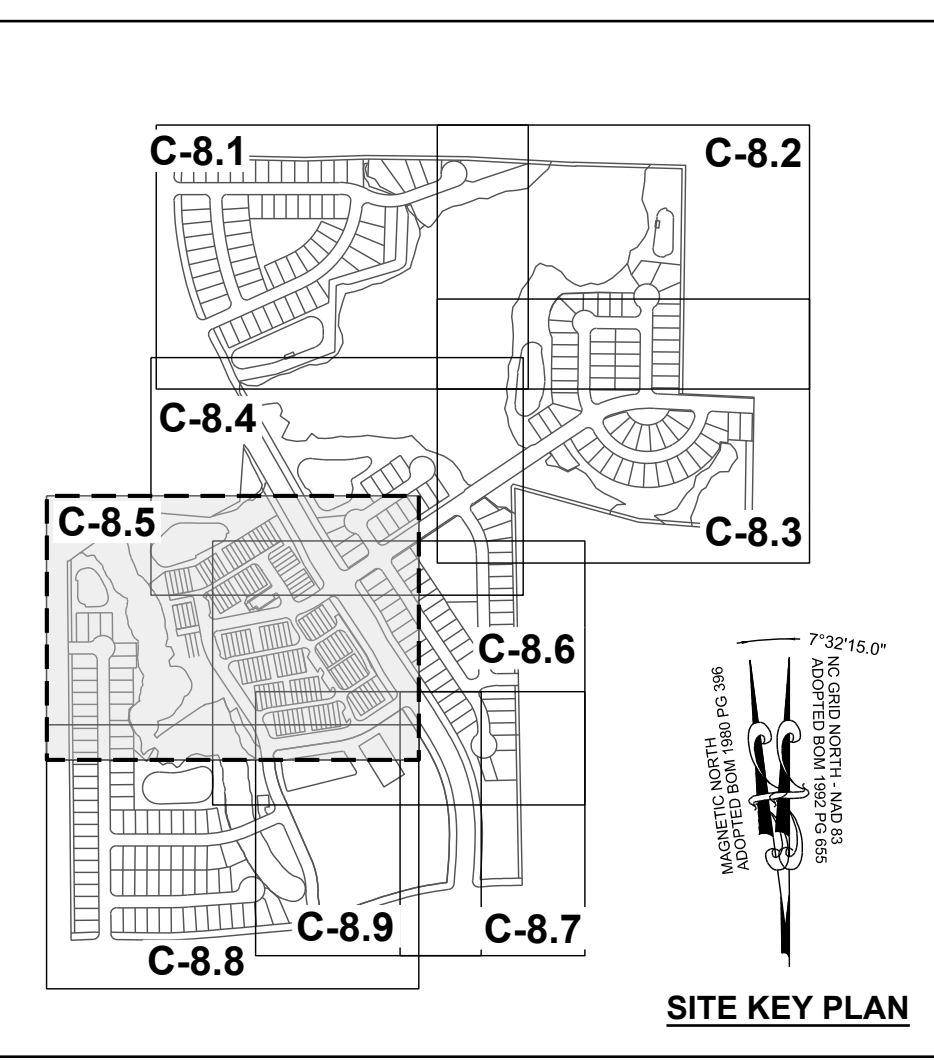
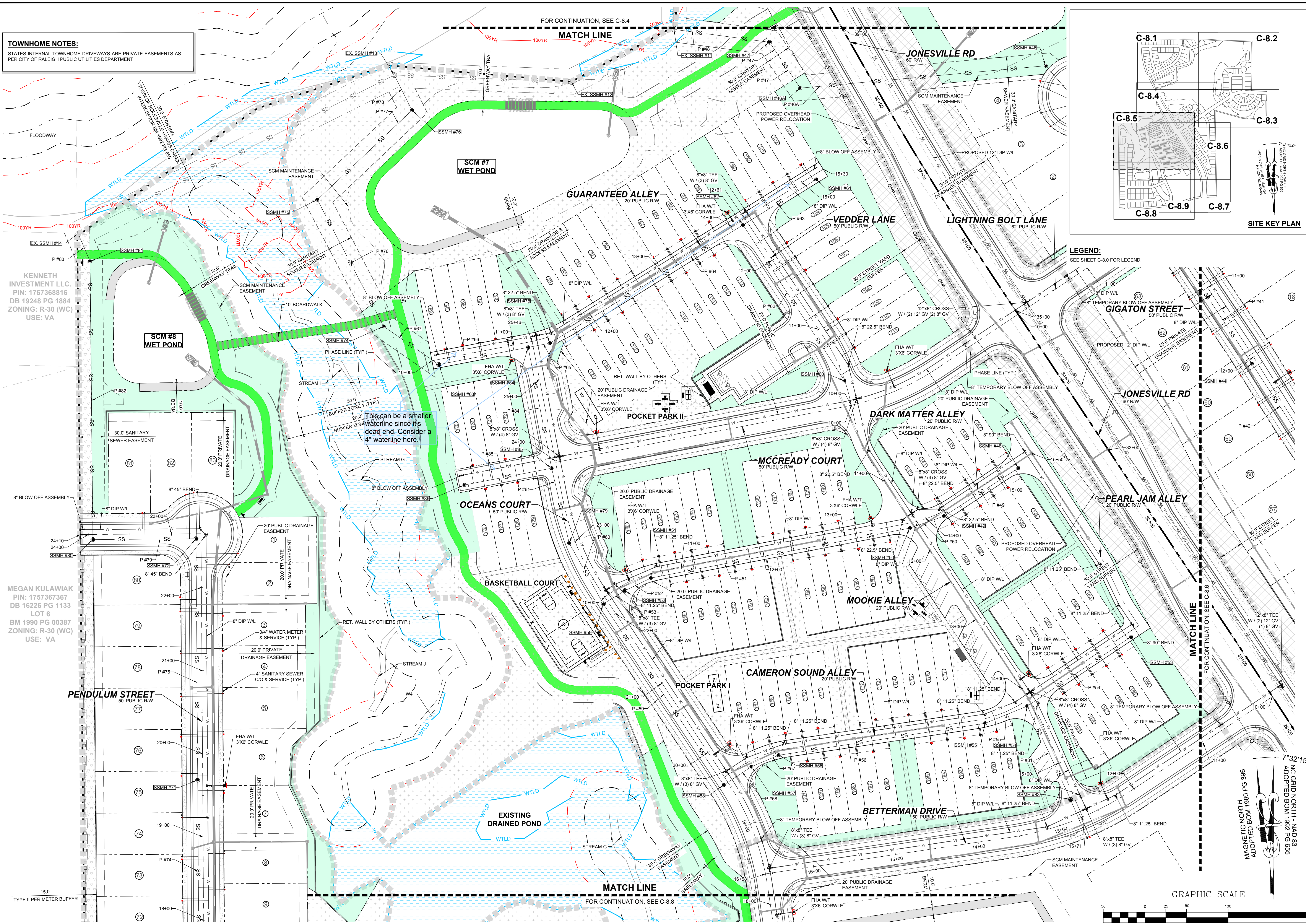


THIS PLANSET AND ANY ASSOCIATED DOCUMENTS ARE PRELIMINARY AND NOT AUTHORIZED FOR CONSTRUCTION UNTIL SIGNED, DATED, AND OFFICIALLY RELEASED FOR CONSTRUCTION BY THE ENGINEER OF RECORD.

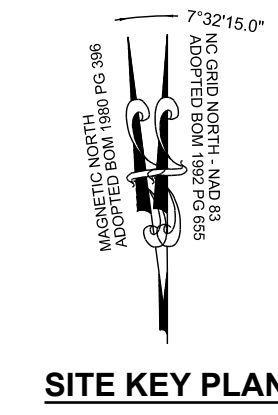
**TOWNHOME NOTES:**  
STATES INTERNAL TOWNHOME DRIVEWAYS ARE PRIVATE EASEMENTS AS PER CITY OF RALEIGH PUBLIC UTILITIES DEPARTMENT

KENNETH INVESTMENT LLC  
PIN: 1757368816  
DB 19248 PG 1884  
ZONING: R-30 (WC)  
USE: VA

MEGAN KULAWIAK  
PIN: 1757367367  
DB 16226 PG 1133  
LOT 6  
BM 1990 PG 00387  
ZONING: R-30 (WC)  
USE: VA



**LEGEND:**  
SEE SHEET C-8.0 FOR LEGEND.



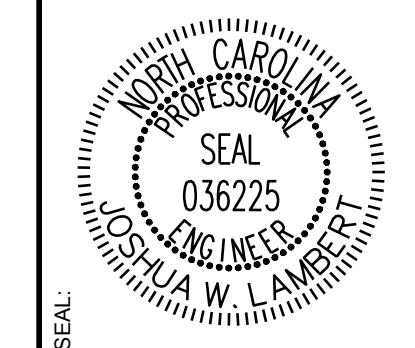
FOR CONTINUATION, SEE C-8.4

FOR CONTINUATION, SEE C-8.6

FOR CONTINUATION, SEE C-8.8

THIS PLANSET AND ANY ASSOCIATED DOCUMENTS ARE PRELIMINARY AND NOT AUTHORIZED FOR CONSTRUCTION UNTIL SIGNED, DATED, AND OFFICIALLY RELEASED FOR CONSTRUCTION BY THE ENGINEER OF RECORD.

NO.	REVISIONS	DATE	BY
1			
2			



**STRONGROCK ENGINEERING GROUP**

STRONG ROCK ENGINEERING GROUP, PLLC | COMPANY LICENSE # P-2166  
305 CHURCH AT NORTH HILLS STREET, SUITE 1110 RALEIGH, NC 27609 | INFORMATION@STRONGROCKGROUP.COM

STRONG ROCK PROJECT	SCALE	DESIGNED BY	DRAWN BY	CHECKED BY
PSP-24-03	AS SHOWN	JWL	SRG	JWL

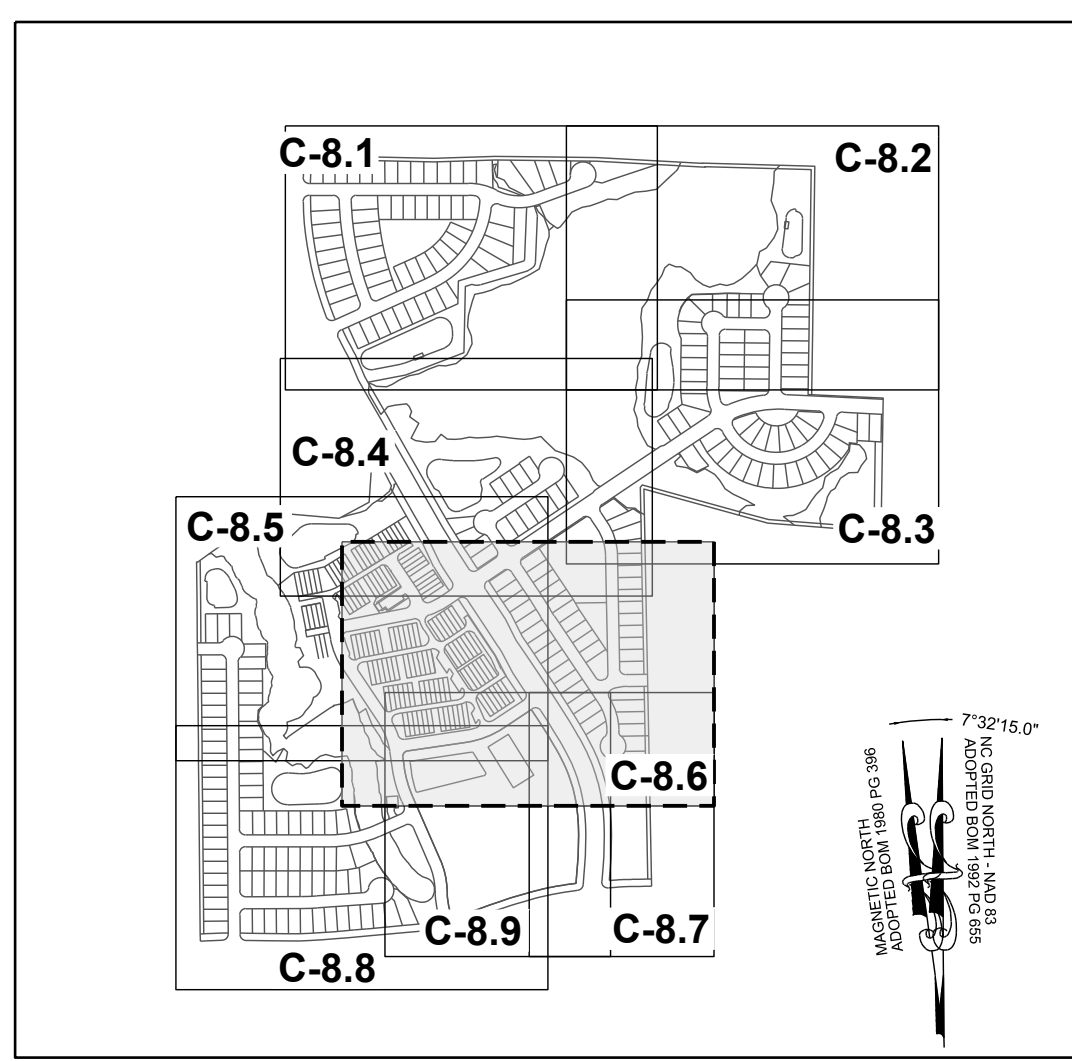
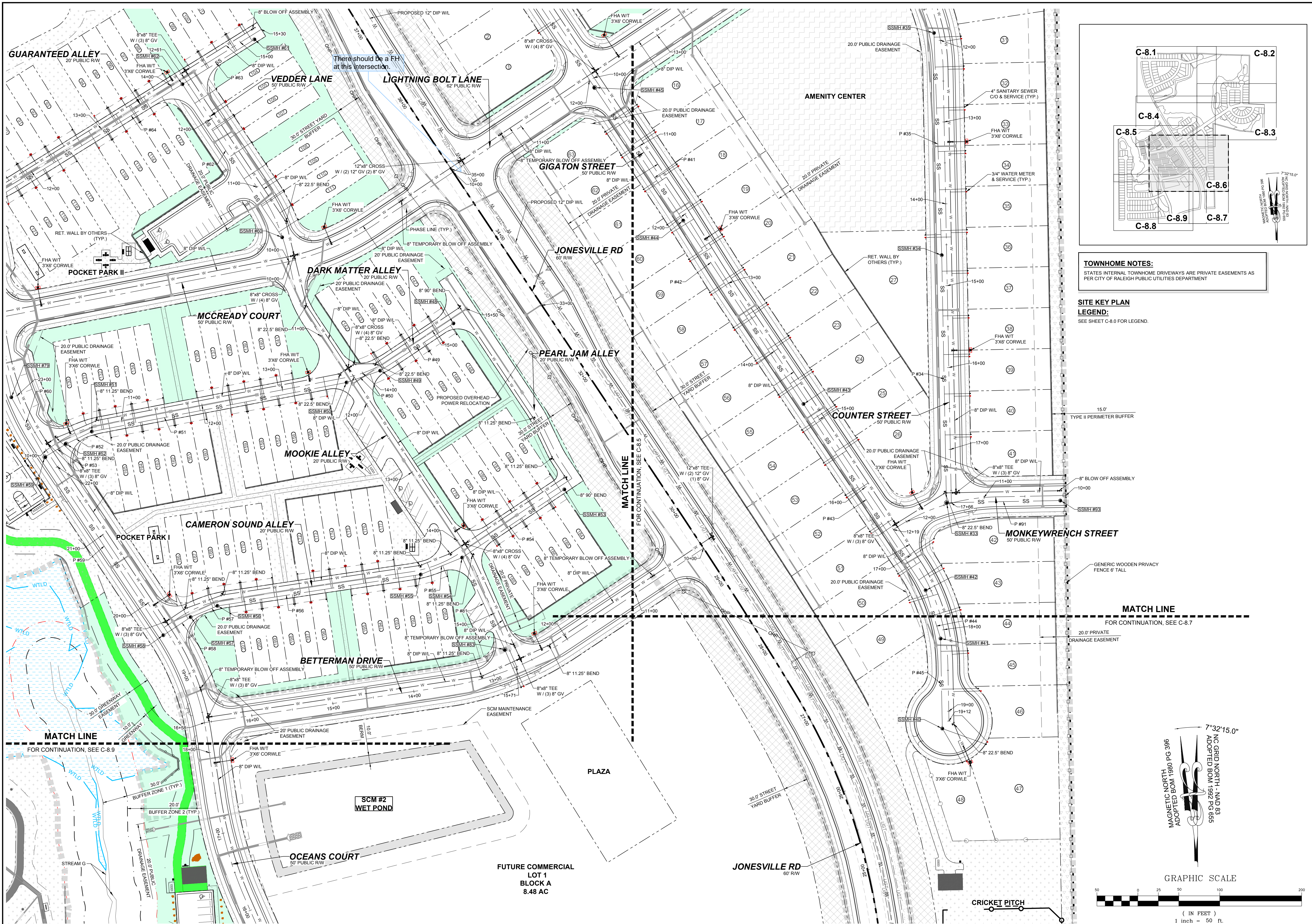
**RESERVE @ MITCHELL MILL**  
TOWN OF ROLESVILLE, WAKE COUNTY, NORTH CAROLINA

**CONSTRUCTION PLANS**

**PARTIAL UTILITY PLAN V**

DRAWING SHEET  
**C-8.5**

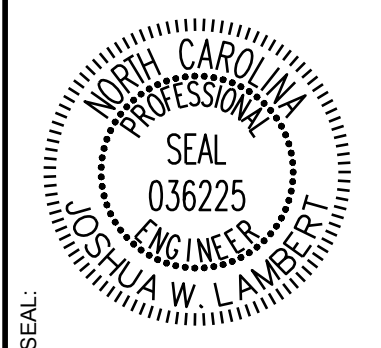
40 OF 176



**TOWNHOME NOTES:**  
 STATES INTERNAL TOWNHOME DRIVEWAYS ARE PRIVATE EASEMENTS AS PER CITY OF RALEIGH PUBLIC UTILITIES DEPARTMENT

**SITE KEY PLAN LEGEND:**  
 SEE SHEET C-8.0 FOR LEGEND.

NO.	REVISIONS	DATE	BY
1	CONSTRUCTION INFRASTRUCTURE DRAWINGS CDD-20-04		
2	TOWN OF RALEIGH DATE 02-28-04		

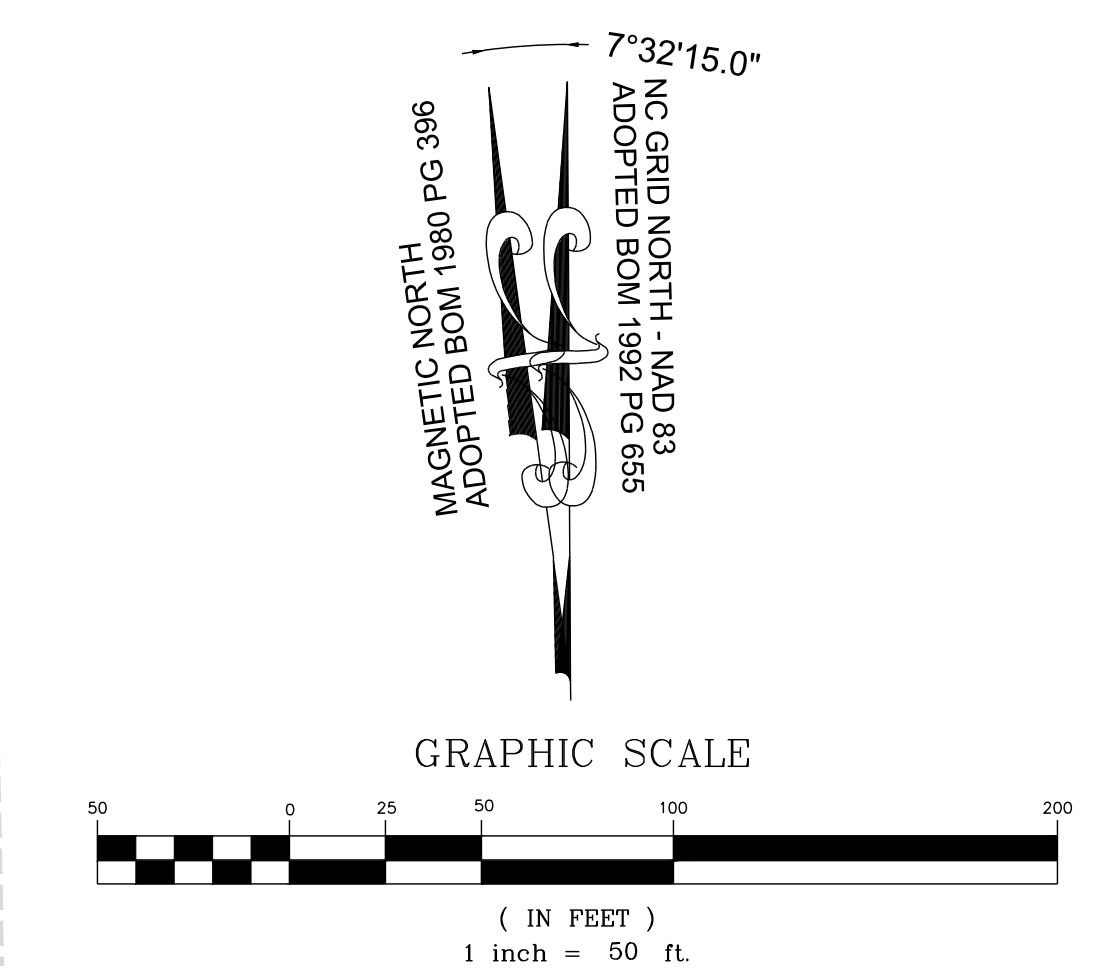


**STRONGROCK ENGINEERING GROUP**  
 STRONG ROCK ENGINEERING GROUP, PLLC | COMPANY LICENSE # P-2166  
 305 CHURCH AT NORTH HILLS STREET, SUITE 1110 RALEIGH, NC 27609 | INFORMATION@STRONGROCKGROUP.COM

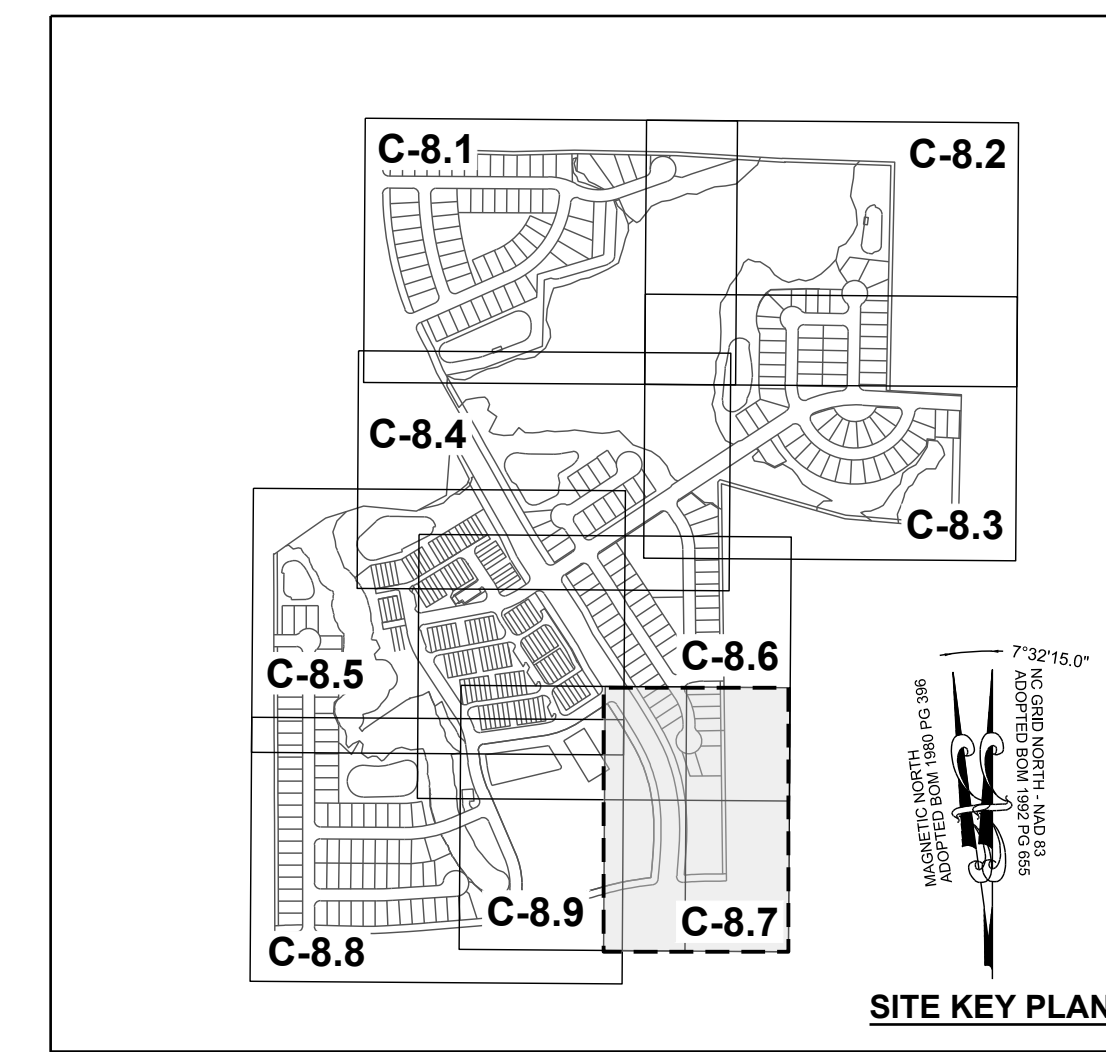
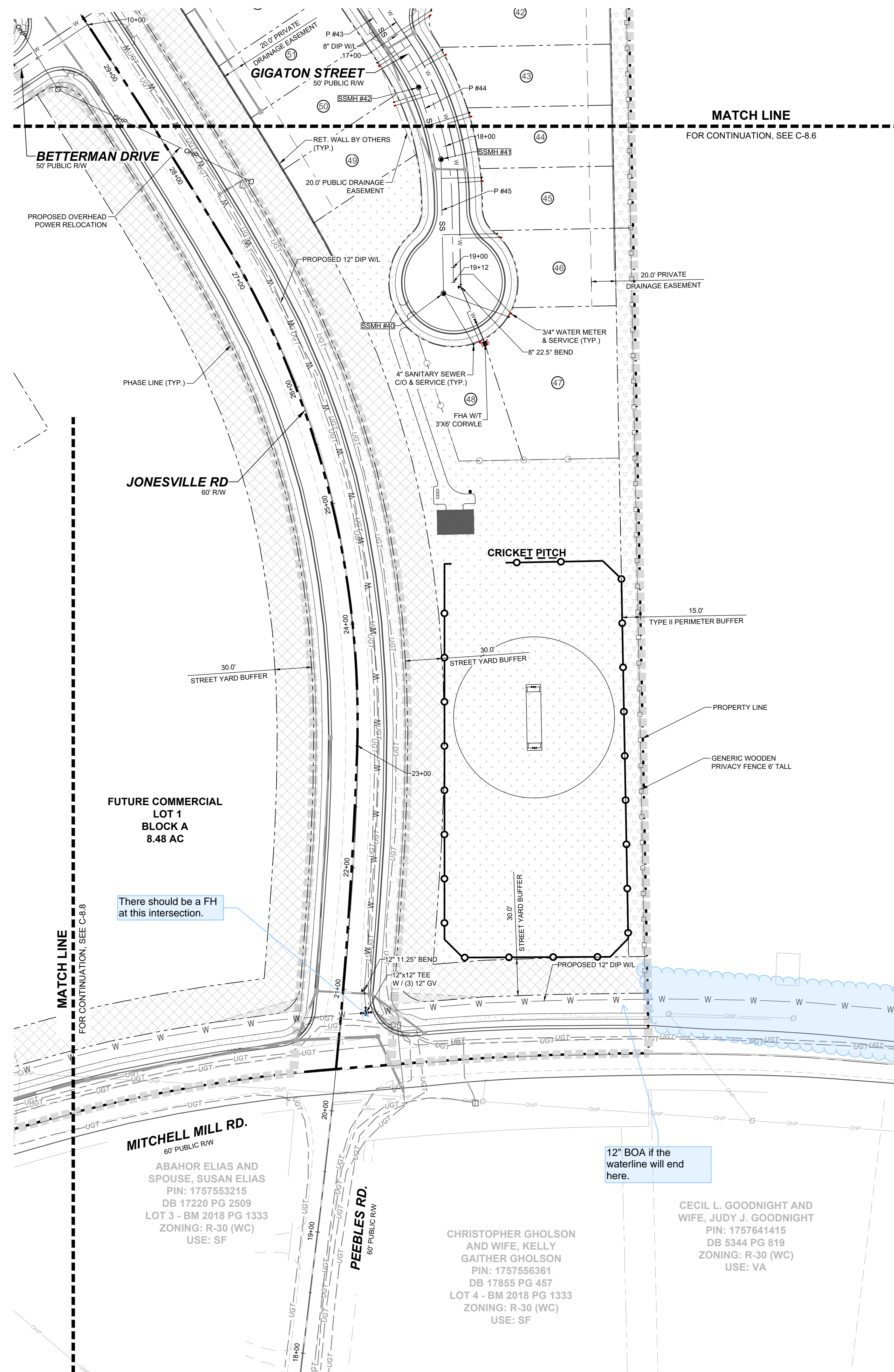
STRONG ROCK PROJECT PSP-22-03	NOT FOR CONSTRUCTION	SCALE AS SHOWN	DESIGNED BY JWL	SRG	DRAWN BY JWL	CHECKED BY JWL
-------------------------------	----------------------	----------------	-----------------	-----	--------------	----------------

RESERVE @ MITCHELL MILL  
 TOWN OF RALEIGH, WAKE COUNTY, NORTH CAROLINA  
 CONSTRUCTION PLANS  
 PARTIAL UTILITY PLAN VI

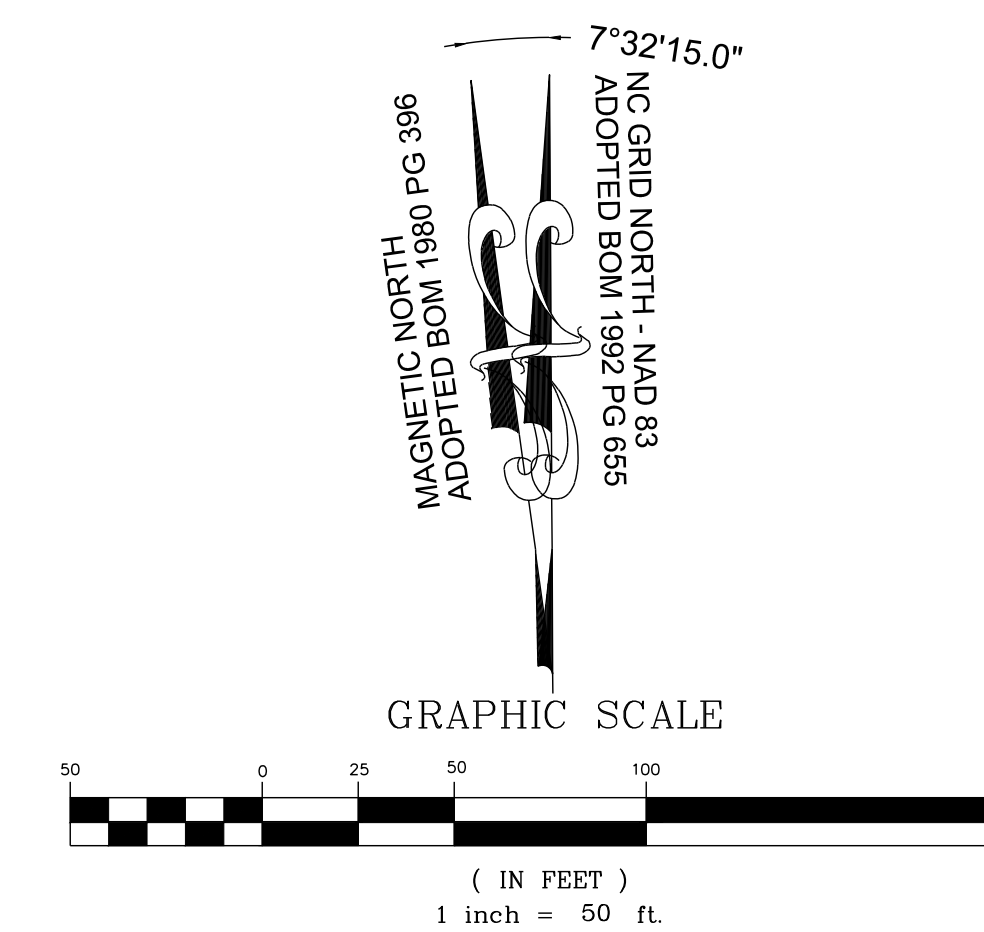
DRAWING SHEET  
**C-8.6**



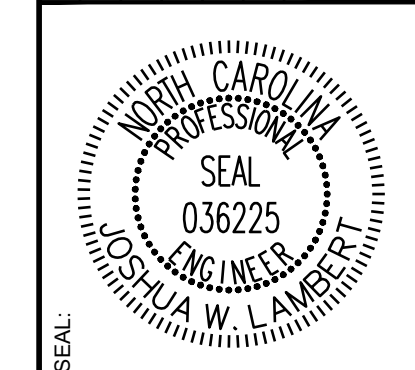
THIS PLANSET AND ANY ASSOCIATED DOCUMENTS ARE PRELIMINARY AND NOT AUTHORIZED FOR CONSTRUCTION UNTIL SIGNED, DATED, AND OFFICIALLY RELEASED FOR CONSTRUCTION BY THE ENGINEER OF RECORD.



**LEGEND:**  
SEE SHEET C-8.0 FOR LEGEND.



NO.	REVISIONS	DATE	BY
1			
2			



**STRONGROCK ENGINEERING GROUP**  
STRONG ROCK ENGINEERING GROUP, PLLC | COMPANY LICENSE # P-2166  
305 CHURCH AT NORTH HILLS STREET, SUITE 1110 RALEIGH, NC 27609 | INFORMATION@STRONGROCKGROUP.COM

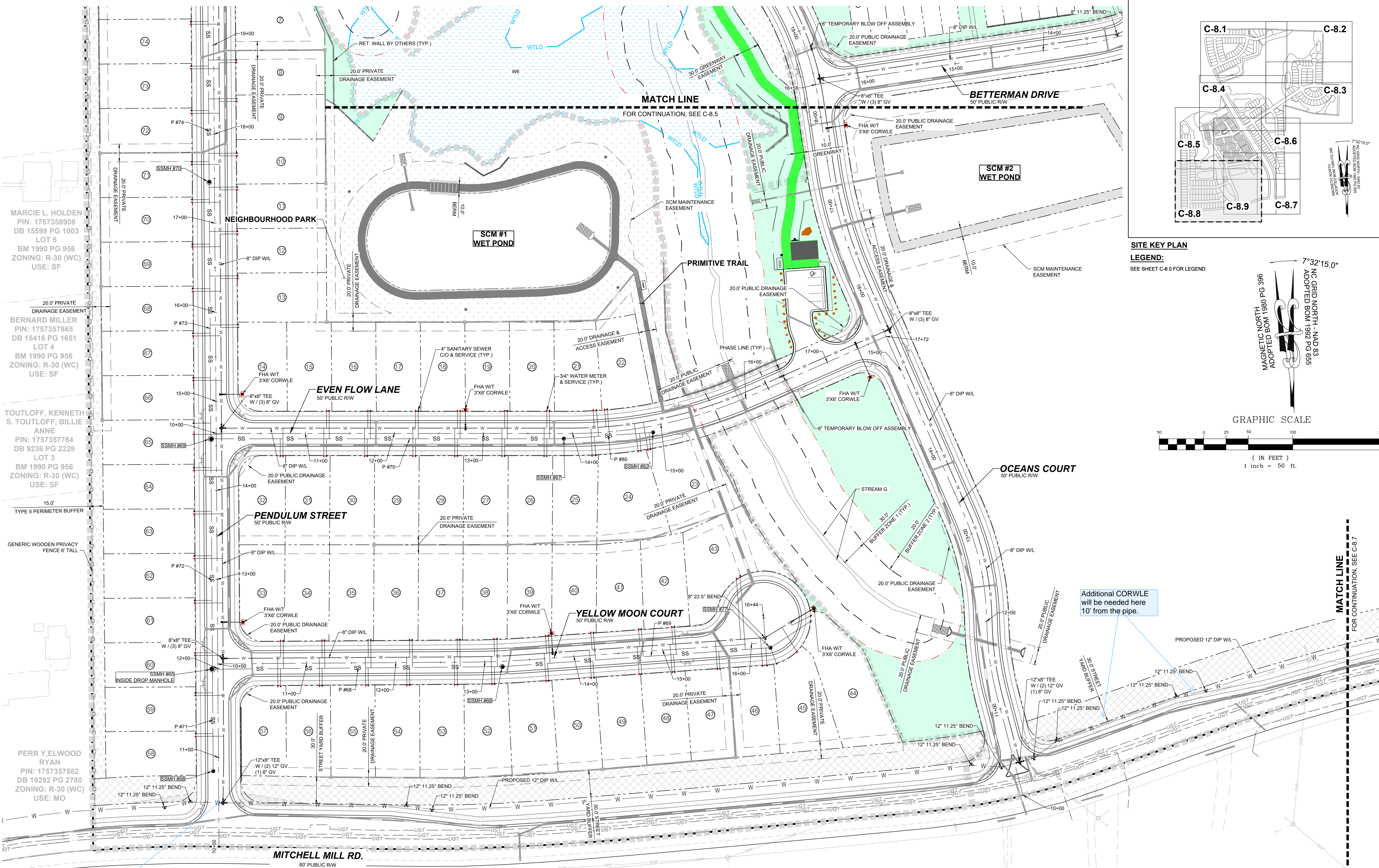
STRONG ROCK PROJECT	DESIGNED BY	CHECKED BY
PSP-24-03	JWL	JWL
NOT FOR CONSTRUCTION	SRG	
SCALE AS SHOWN		

**RESERVE @ MITCHELL MILL**  
TOWN OF ROLESVILLE, WAKE COUNTY, NORTH CAROLINA  
**CONSTRUCTION PLANS**  
**PARTIAL UTILITY PLAN VII**

**DRAWING SHEET**  
**C-8.7**

THIS PLANSET AND ANY ASSOCIATED DOCUMENTS ARE PRELIMINARY AND NOT AUTHORIZED FOR CONSTRUCTION UNTIL SIGNED, DATED, AND OFFICIALLY RELEASED FOR CONSTRUCTION BY THE ENGINEER OF RECORD.





MARCI L. HOLDEN  
PIN: 1757358908  
DB 15599 PG 1003  
LOT 5  
BM 1990 PG 956  
ZONING: R-30 (WC)  
USE: SF

BERNARD MILLER  
PIN: 1757357865  
DB 15416 PG 1651  
LOT 4  
BM 1990 PG 956  
ZONING: R-30 (WC)  
USE: SF

TOUTLOFF, KENNETH  
S. TOUTLOFF, BILLIE  
ANNE  
PIN: 1757357764  
DB 9236 PG 2229  
LOT 3  
BM 1990 PG 956  
ZONING: R-30 (WC)  
USE: SF

PERR Y. ELWOOD  
RYAN  
PIN: 1757357582  
DB 19292 PG 2780  
ZONING: R-30 (WC)  
USE: MO

PHETIS JONES  
BRADSHAW  
PIN: 1757349473  
DB 15208 PG 2320  
BM 2013 PG 868  
ZONING: R-30 (WC)  
USE: FO

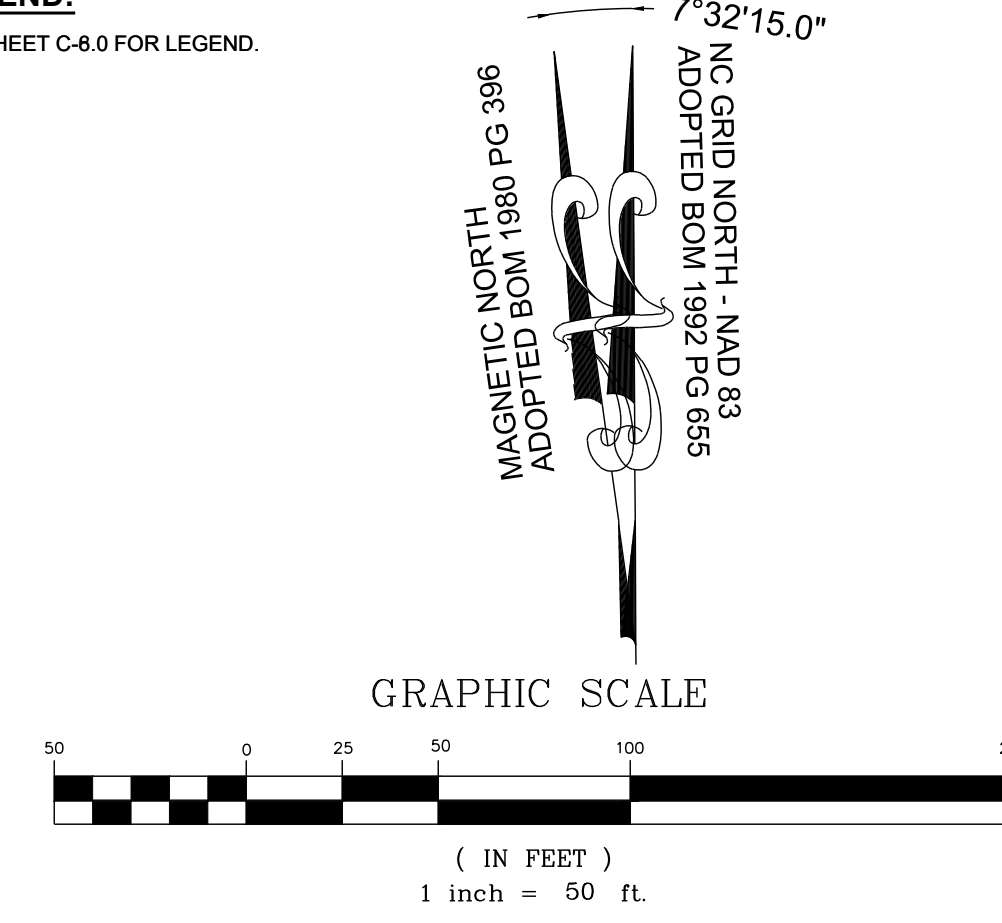
CURTIS L. HONEYCUTT  
AND WIFE TODD  
KENDALL  
PIN: 1757540996  
DB 19269 PG 2474  
LOT 1 - BM 2018 PG 1333  
ZONING: R-30 (WC)  
USE: SF

TODD KENDALL  
HONEYCUTT  
PIN: 1757551202  
DB 13474 PG 1974  
LOT 2 - BM 2018 PG 1333  
ZONING: R-30 (WC)  
USE: SF

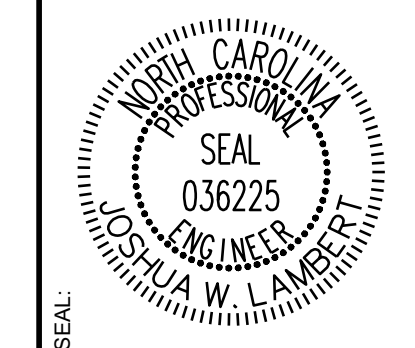
There should be a FH  
at this intersection.

Additional CORWLE  
will be needed here  
10' from the pipe.

**SITE KEY PLAN**  
LEGEND:  
SEE SHEET C-8.0 FOR LEGEND.



1	CONSTRUCTION INFRASTRUCTURE DRAWINGS CDD-24-04	DATE
2	TOWN OF ROLESVILLE CDD-24-04	REVISIONS
		No.
		DATE
		BY



**STRONGROCK**  
ENGINEERING GROUP

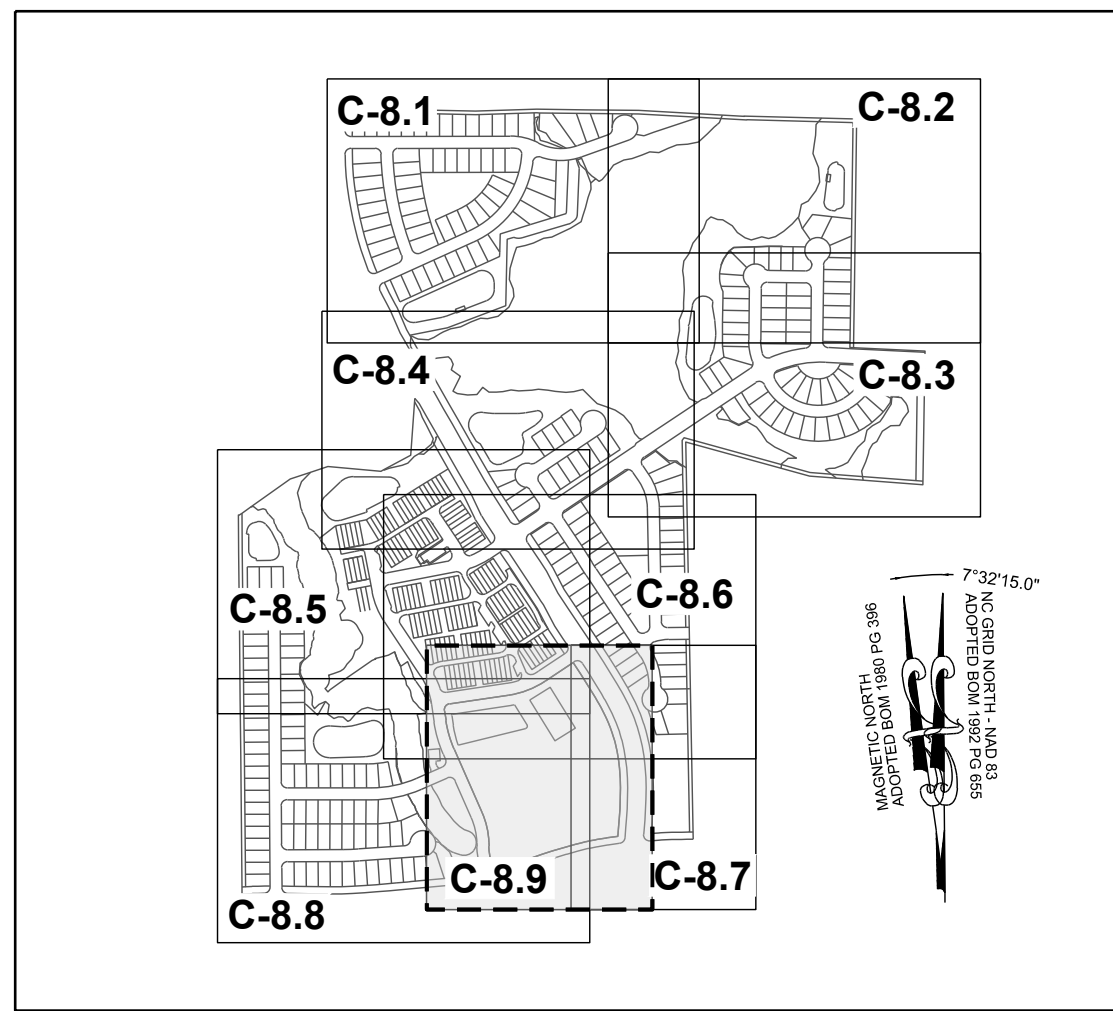
STRONG ROCK ENGINEERING GROUP, PLLC | COMPANY LICENSE # P-2766  
305 CHURCH AT NORTH HILLS STREET, SUITE 1110 RALEIGH, NC 27609 | INFORMATION@STRONGROCKGROUP.COM

STRONG ROCK PROJECT	STRONG ROCK PROJECT P-24-03
NOT FOR CONSTRUCTION	SCALE AS SHOWN
DESIGNED BY	JWL
DRAWN BY	SRG
CHECKED BY	JWL

RESERVE @ MITCHELL MILL  
TOWN OF ROLESVILLE, WAKE COUNTY, NORTH CAROLINA  
CONSTRUCTION PLANS  
PARTIAL UTILITY PLAN VIII

DRAWING SHEET  
**C-8.8**

THIS PLANSET AND ANY ASSOCIATED DOCUMENTS ARE PRELIMINARY AND NOT AUTHORIZED FOR CONSTRUCTION UNTIL SIGNED, DATED, AND OFFICIALLY RELEASED FOR CONSTRUCTION BY THE ENGINEER OF RECORD.



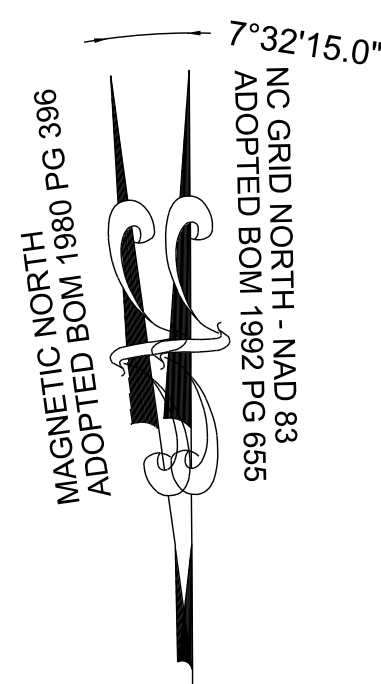
**SITE KEY PLAN**

**LEGEND:**

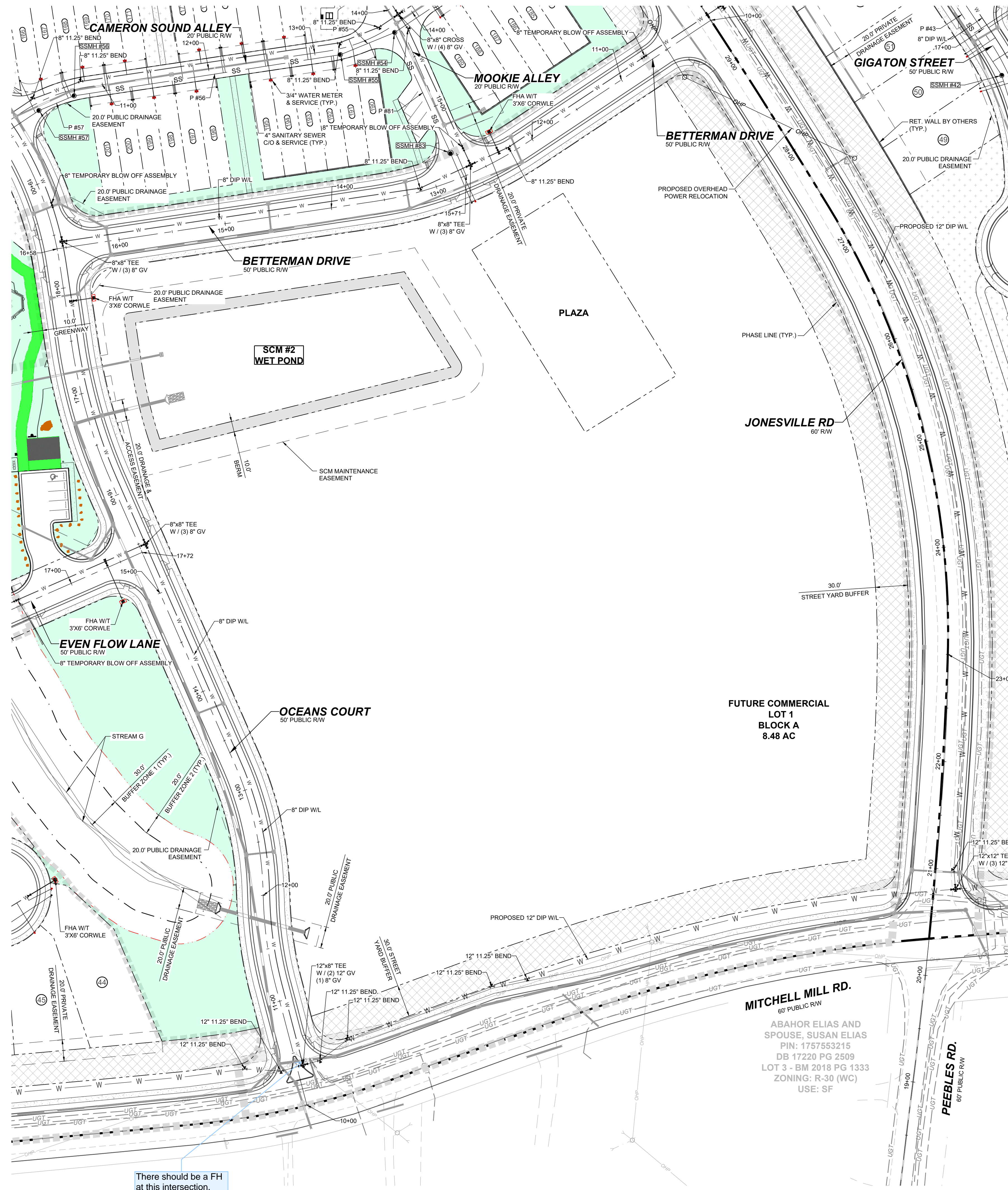
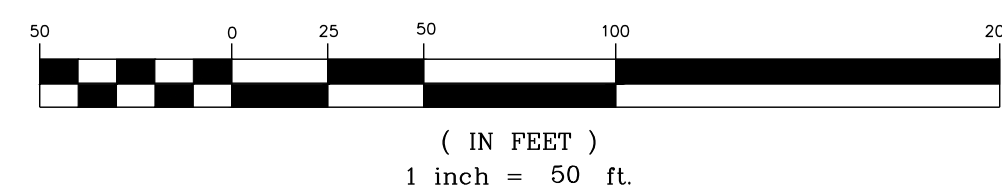
SEE SHEET C-8.0 FOR LEGEND.

**TOWNHOME NOTES:**

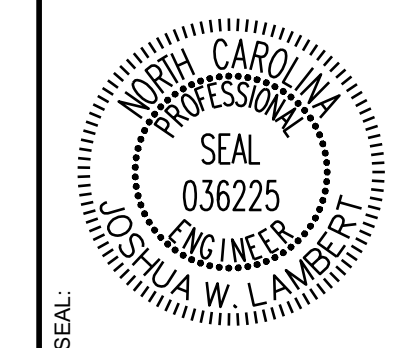
STATES INTERNAL TOWNHOME DRIVEWAYS ARE PRIVATE EASEMENTS AS PER CITY OF RALEIGH PUBLIC UTILITIES DEPARTMENT



**GRAPHIC SCALE**



NO.	REVISIONS	DATE	BY
1			
2			



**STRONGROCK**  
ENGINEERING GROUP

STRONG ROCK ENGINEERING GROUP, PLLC | COMPANY LICENSE # P-2766  
305 CHURCH AT NORTH HILLS STREET, SUITE 1110 RALEIGH, NC 27609 | INFORMATION@STRONGROCKGROUP.COM

STRONG ROCK PROJECT	STRONG ROCK PROJECT
PSP-24-03	PSP-24-03
NOT FOR CONSTRUCTION	NOT FOR CONSTRUCTION
SCALE AS SHOWN	SCALE AS SHOWN
DESIGNED BY JWL	DESIGNED BY JWL
DRAWN BY SRG	DRAWN BY SRG
CHECKED BY JWL	CHECKED BY JWL

RESERVE @ MITCHELL MILL  
TOWN OF ROLESVILLE, WAKE COUNTY, NORTH CAROLINA  
CONSTRUCTION PLANS  
PARTIAL UTILITY PLAN IX

DRAWING SHEET  
**C-8.9**

THIS PLANSET AND ANY ASSOCIATED DOCUMENTS ARE PRELIMINARY AND NOT AUTHORIZED FOR CONSTRUCTION UNTIL SIGNED, DATED, AND OFFICIALLY RELEASED FOR CONSTRUCTION BY THE ENGINEER OF RECORD.



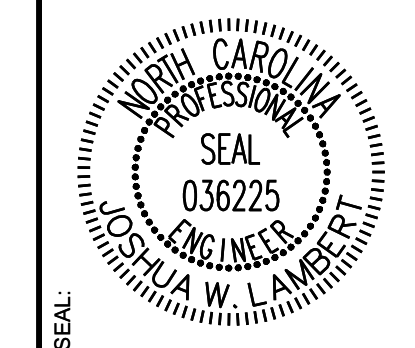


**TOWNHOME NOTES:**  
STATES INTERNAL TOWNHOME DRIVEWAYS ARE PRIVATE EASEMENTS AS PER CITY OF RALEIGH PUBLIC UTILITIES DEPARTMENT

**LEGEND:**

- W — WATER LINE
- ⊕ FIRE HYDRANT ASSEMBLY
- ⊕ GATE VALVE
- ⊕ TEE
- ⊕ BLOW OFF VALVE

NO.	REVISIONS	DATE	BY
1			
2			



**STRONGROCK**  
ENGINEERING GROUP

STRONG ROCK ENGINEERING GROUP, PLLC | COMPANY LICENSE # P-2166  
305 CHURCH AT NORTH HILLS STREET, SUITE 1110 RALEIGH, NC 27609 | INFORMATION@STRONGROCKGROUP.COM

STRONG ROCK PROJECT	STRONG ROCK PROJECT
PSP-24-08	PSP-24-08
NOT FOR CONSTRUCTION	NOT FOR CONSTRUCTION
SCALE AS SHOWN	SCALE AS SHOWN
DESIGNED BY JWL	DESIGNED BY JWL
DRAWN BY SRG	DRAWN BY SRG
CHECKED BY JWL	CHECKED BY JWL

**RESERVE @ MITCHELL MILL**  
TOWN OF ROLESVILLE, WAKE COUNTY, NORTH CAROLINA  
**CONSTRUCTION PLANS**  
**OFF-SITE UTILITY PLAN**

**DRAWING SHEET**  
**C-8.11**

THIS PLANSET AND ANY ASSOCIATED DOCUMENTS ARE PRELIMINARY AND NOT AUTHORIZED FOR CONSTRUCTION UNTIL SIGNED, DATED, AND OFFICIALLY RELEASED FOR CONSTRUCTION BY THE ENGINEER OF RECORD.