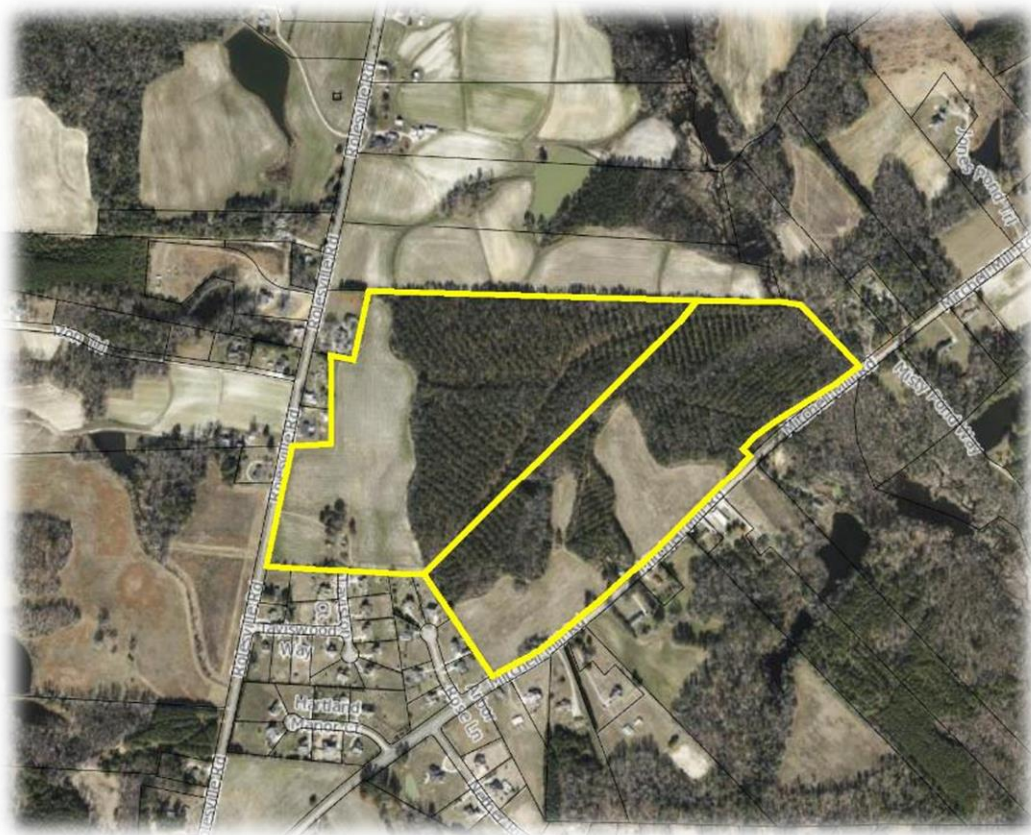


STORMWATER IMPACT ANALYSIS



TIMMONS GROUP
ENGINEERING | DESIGN | TECHNOLOGY

ROLESVILLE CROSSING ROLESVILLE, NORTH CAROLINA



FEBRUARY 7TH, 2025

PREPARED FOR:

Hopper Communities, Inc.
1616 Cleveland Ave
Charlotte, NC 28203
(919) 618-9929

PREPARED BY:

Timmons Group, NC License No. C-1652
Patrick Barbeau, PE
5410 Trinity Road, Suite 102
Raleigh, North Carolina 27607
(919) 866-4512 | patrick.barbeau@timmons.com
www.timmons.com



02/07/2025

Storm Sewer Inventory Report 10-yr

Line No.	Alignment				Flow Data				Physical Data								Line ID
	Dnstr Line No.	Line Length (ft)	Defl angle (deg)	Junc Type	Known Q (cfs)	Drng Area (ac)	Runoff Coeff (C)	Inlet Time (min)	Invert EI Dn (ft)	Line Slope (%)	Invert EI Up (ft)	Line Size (in)	Line Shape	N Value (n)	J-Loss Coeff (K)	Inlet/ Rim EI (ft)	
1	End	69.501	-143.449	DrCrb	0.00	0.00	0.00	5.0	370.00	1.44	371.00	48	Cir	0.013	0.96	378.86	P(150)
2	1	165.281	-35.797	Comb	0.00	0.36	0.62	5.0	371.10	1.03	372.80	30	Cir	0.013	1.79	382.85	P(151)
3	2	41.384	-52.342	Comb	0.00	0.24	0.62	5.0	372.90	0.72	373.20	30	Cir	0.013	1.27	383.50	P(152)
4	3	124.566	-55.116	Comb	0.00	0.12	0.62	5.0	373.30	1.69	375.40	30	Cir	0.013	1.63	385.99	P(153)
5	4	137.485	78.537	DrCrb	0.00	1.57	0.62	5.0	375.54	0.70	376.50	30	Cir	0.013	1.49	382.56	P(154)
6	5	66.886	83.366	DrCrb	0.00	0.15	0.62	5.0	376.63	0.70	377.10	30	Cir	0.013	1.50	383.86	P(155)
7	6	136.500	-88.985	Comb	0.00	0.30	0.62	5.0	377.34	0.70	378.30	30	Cir	0.013	1.50	389.98	P(156)
8	7	32.883	-90.000	Comb	0.00	0.44	0.62	5.0	378.50	0.91	378.80	24	Cir	0.013	1.50	389.83	P(157)
9	8	27.000	90.000	Comb	0.00	0.08	0.62	5.0	379.00	1.48	379.40	24	Cir	0.013	1.50	389.83	P(158)
10	9	58.951	-43.030	Comb	0.00	0.19	0.62	5.0	383.00	3.39	385.00	18	Cir	0.013	1.65	389.61	P(159)
11	10	79.355	57.166	Comb	0.00	0.29	0.62	5.0	385.29	1.52	386.50	18	Cir	0.013	1.48	390.81	P(160)
12	11	165.290	23.414	Comb	0.00	0.21	0.62	5.0	386.70	2.18	390.30	15	Cir	0.013	1.50	394.36	P(161)
13	12	27.000	-87.223	Comb	0.00	0.37	0.66	5.0	390.50	0.96	390.76	15	Cir	0.013	1.00	394.36	P(162)
14	11	27.007	-80.803	Comb	0.00	0.35	0.62	5.0	386.90	0.74	387.10	15	Cir	0.013	1.00	390.81	P(171)
15	10	27.000	-43.394	Comb	0.00	0.21	0.62	5.0	385.70	0.74	385.90	15	Cir	0.013	1.33	389.61	P(169)
16	15	54.161	-59.341	Comb	0.00	0.21	0.62	5.0	386.00	1.40	386.76	15	Cir	0.013	1.00	391.29	P(170)
17	9	61.845	90.105	Comb	0.00	0.05	0.62	5.0	382.00	1.62	383.00	15	Cir	0.013	0.50	390.27	P(167) (1)
18	17	46.022	5.644	Comb	0.00	0.23	0.62	5.0	383.20	1.74	384.00	15	Cir	0.013	1.50	390.71	P(167)
19	18	23.867	-85.817	DrCrb	0.00	0.83	0.62	5.0	384.20	2.35	384.76	15	Cir	0.013	1.00	388.97	P(168)
20	4	72.447	-15.889	Comb	0.00	0.20	0.62	5.0	378.00	2.00	379.45	15	Cir	0.013	0.91	387.46	P(165)
21	20	50.245	-33.698	Comb	0.00	0.16	0.62	5.0	383.00	3.98	385.00	15	Cir	0.013	1.00	388.33	P(166)
22	2	39.296	49.392	Comb	0.00	0.10	0.62	5.0	377.50	0.76	377.80	15	Cir	0.013	1.11	382.26	P(163)
23	22	136.294	-43.931	DrCrb	0.00	0.75	0.62	5.0	377.90	0.51	378.60	15	Cir	0.013	1.00	381.91	P(164)

Project File: 2025-02-05_43398-STRM .stm

Number of lines: 224

Date: 2/5/2025

Storm Sewer Profile

