

**CITY OF RALEIGH PUBLIC UTILITIES  
STANDARD UTILITY NOTES (AS APPLICABLE)**

- ALL MATERIALS & CONSTRUCTION METHODS SHALL BE IN ACCORDANCE WITH CITY OF RALEIGH DESIGN STANDARDS, DETAILS & SPECIFICATIONS (REFERENCE: CORPUD HANDBOOK, CURRENT EDITION)
- UTILITY SEPARATION REQUIREMENTS:
  - A DISTANCE OF 100' SHALL BE MAINTAINED BETWEEN SANITARY SEWER & ANY PRIVATE OR PUBLIC WATER SUPPLY SOURCE SUCH AS AN IMPOUNDED RESERVOIR USED AS A SOURCE OF DRINKING WATER. IF ADEQUATE LATERAL SEPARATION CANNOT BE ACHIEVED, FERROUS SANITARY SEWER PIPE SHALL BE SPECIFIED & INSTALLED TO WATERLINE SPECIFICATIONS. HOWEVER, THE MINIMUM SEPARATION SHALL NOT BE LESS THAN 25' FROM A PRIVATE WELL OR 50' FROM A PUBLIC WELL.
  - WHEN INSTALLING WATER &/OR SEWER MAINS, THE HORIZONTAL SEPARATION BETWEEN UTILITIES SHALL BE 10'. IF THIS SEPARATION CANNOT BE MAINTAINED DUE TO EXISTING CONDITIONS, THE VARIATION ALLOWED IS THE WATER MAIN IN A SEPARATE TRENCH WITH THE ELEVATION OF THE WATER MAIN AT LEAST 18" ABOVE THE TOP OF THE SEWER & MUST BE APPROVED BY THE PUBLIC UTILITIES DIRECTOR. ALL DISTANCES ARE MEASURED FROM OUTSIDE DIAMETER TO OUTSIDE DIAMETER.
  - WHERE IT IS IMPOSSIBLE TO OBTAIN PROPER SEPARATION, OR ANYTIME A SANITARY SEWER PASSES OVER A WATERMAIN, DIP MATERIALS OR STEEL ENCASUREMENT EXTENDED 10' ON EACH SIDE OF CROSSING MUST BE SPECIFIED & INSTALLED TO WATERLINE SPECIFICATIONS.
  - 5.0' MINIMUM HORIZONTAL SEPARATION IS REQUIRED BETWEEN ALL SANITARY SEWER & STORM SEWER FACILITIES, UNLESS DIP MATERIAL IS SPECIFIED FOR SANITARY SEWER.
  - MAINTAIN 18" MIN. VERTICAL SEPARATION AT ALL WATERMAIN & RCP STORM DRAIN CROSSINGS; MAINTAIN 18" MIN. VERTICAL SEPARATION AT ALL SANITARY SEWER & RCP STORM DRAIN CROSSINGS. WHERE ADEQUATE SEPARATIONS CANNOT BE ACHIEVED, SPECIFY DIP MATERIALS & A CONCRETE CRADLE HAVING 6" MIN. CLEARANCE (PER CORPUD DETAILS W-41 & S-49).
  - ALL OTHER UNDERGROUND UTILITIES SHALL CROSS WATER & SEWER FACILITIES WITH 18" MIN. VERTICAL SEPARATION REQUIRED.
- ANY NECESSARY FIELD REVISIONS ARE SUBJECT TO REVIEW & APPROVAL OF AN AMENDED PLAN &/OR PROFILE BY THE CITY OF RALEIGH PUBLIC UTILITIES DEPARTMENT PRIOR TO CONSTRUCTION.
- CONTRACTOR SHALL MAINTAIN CONTINUOUS WATER & SEWER SERVICE TO EXISTING RESIDENCES & BUSINESSES THROUGHOUT CONSTRUCTION OF PROJECT. ANY NECESSARY SERVICE INTERRUPTIONS SHALL BE PRECEDED BY A 24 HOUR ADVANCE NOTICE TO THE CITY OF RALEIGH PUBLIC UTILITIES DEPARTMENT.
- 3.0' MINIMUM COVER IS REQUIRED ON ALL WATER MAINS & SEWER FORCEMAINS. 4.0' MINIMUM COVER IS REQUIRED ON ALL REUSE MAINS.
- IT IS THE DEVELOPER'S RESPONSIBILITY TO ABANDON OR REMOVE EXISTING WATER & SEWER SERVICES NOT BEING USED IN REDEVELOPMENT OF A SITE UNLESS OTHERWISE DIRECTED BY THE CITY OF RALEIGH PUBLIC UTILITIES DEPARTMENT. THIS INCLUDES ABANDONING TAP AT MAIN & REMOVAL OF SERVICE FROM ROW OR EASEMENT PER CORPUD HANDBOOK PROCEDURE.
- INSTALL 3/4" COPPER WATER SERVICES WITH METERS LOCATED AT ROW OR WITHIN A 2'X2' WATERLINE EASEMENT IMMEDIATELY ADJACENT. NOTE: IT IS THE APPLICANT'S RESPONSIBILITY TO PROPERLY SIZE THE WATER SERVICE FOR EACH CONNECTION TO PROVIDE ADEQUATE FLOW & PRESSURE.
- INSTALL 4" PVC SEWER SERVICES @ 1.0% MINIMUM GRADE WITH CLEANOUTS LOCATED AT ROW OR EASEMENT LINE & SPACED EVERY 75 LINEAR FEET MAXIMUM.
- PRESSURE REDUCING VALVES ARE REQUIRED ON ALL WATER SERVICES EXCEEDING 80 PSI; BACKWATER VALVES ARE REQUIRED ON ALL SANITARY SEWER SERVICES HAVING BUILDING DRAINS LOWER THAN 1.0' ABOVE THE NEXT UPSTREAM MANHOLE.
- ALL ENVIRONMENTAL PERMITS APPLICABLE TO THE PROJECT MUST BE OBTAINED FROM NCDWQ, USACE &/OR FEMA FOR ANY RIPARIAN BUFFER, WETLAND &/OR FLOODPLAIN IMPACTS (RESPECTIVELY) PRIOR TO CONSTRUCTION.
- NCDOT / RAILROAD ENCROACHMENT AGREEMENTS ARE REQUIRED FOR ANY UTILITY WORK (INCLUDING MAIN EXTENSIONS & SERVICE TAPS) WITHIN STATE OR RAILROAD ROW PRIOR TO CONSTRUCTION.
- GREASE INTERCEPTOR / OIL WATER SEPARATOR SIZING CALCULATIONS & INSTALLATION SPECIFICATIONS SHALL BE APPROVED BY THE CORPUD FOG PROGRAM COORDINATOR PRIOR TO ISSUANCE OF A BUILDING PERMIT. CONTACT TIM BEASLEY AT (919) 996-2334 OR TIMOTHY.BEASLEY@RALEIGHNC.GOV FOR MORE INFORMATION.
- CROSS-CONNECTION CONTROL PROTECTION DEVICES ARE REQUIRED BASED ON DEGREE OF HEALTH HAZARD INVOLVED AS LISTED IN APPENDIX-B OF THE RULES GOVERNING PUBLIC WATER SYSTEMS IN NORTH CAROLINA. THESE GUIDELINES ARE THE MINIMUM REQUIREMENTS. THE DEVICES SHALL MEET AMERICAN SOCIETY OF SANITARY ENGINEERING (ASSE) STANDARDS OR BE ON THE UNIVERSITY OF SOUTHERN CALIFORNIA APPROVAL LIST. THE DEVICES SHALL BE INSTALLED AND TESTED (BOTH INITIAL AND PERIODIC TESTING THEREAFTER) IN ACCORDANCE WITH THE MANUFACTURER'S RECOMMENDATIONS OR THE LOCAL CROSS-CONNECTION CONTROL PROGRAM, WHICHEVER IS MORE STRINGENT. CONTACT JOANIE HARTLEY AT (919) 996-5923 OR JOANIE.HARTLEY@RALEIGHNC.GOV FOR MORE INFORMATION.

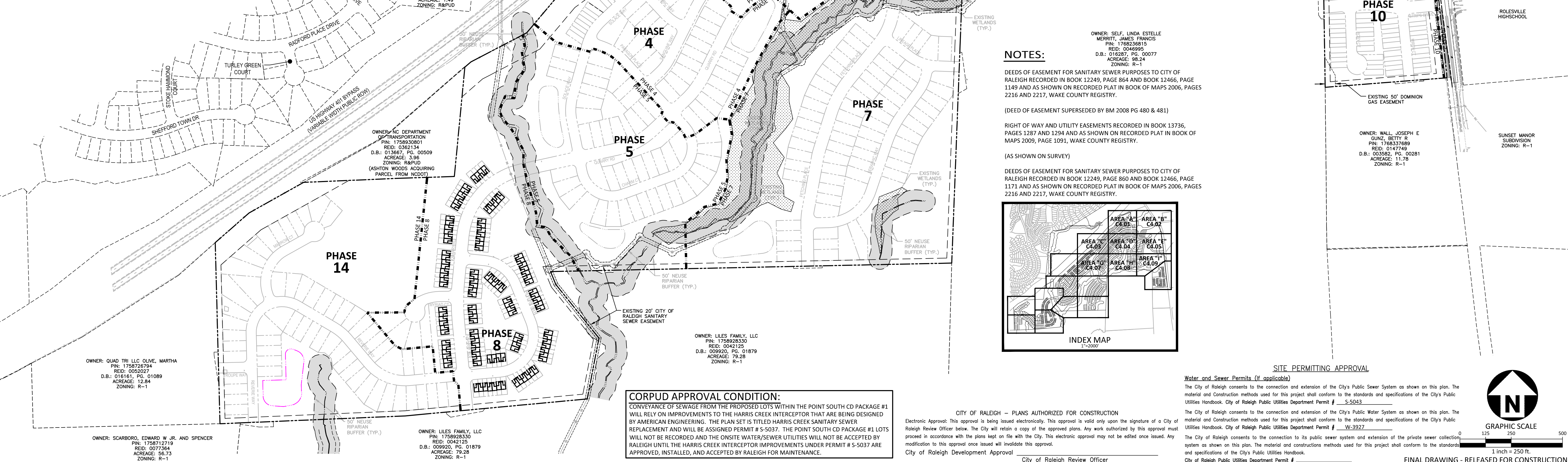


**Know what's below.  
Call before you dig.**

**CONTRACTOR SHALL NOTIFY "811" (811) OR (1-800-632-4949) AT LEAST 3 FULL BUSINESS DAYS PRIOR TO BEGINNING CONSTRUCTION OR EXCAVATION TO HAVE EXISTING UTILITIES LOCATED. CONTRACTOR SHALL CONTACT ANY LOCAL UTILITIES THAT PROVIDE THEIR OWN LOCATOR SERVICES INDEPENDENT OF "811". REPORT ANY DISCREPANCIES TO THE ENGINEER IMMEDIATELY.**

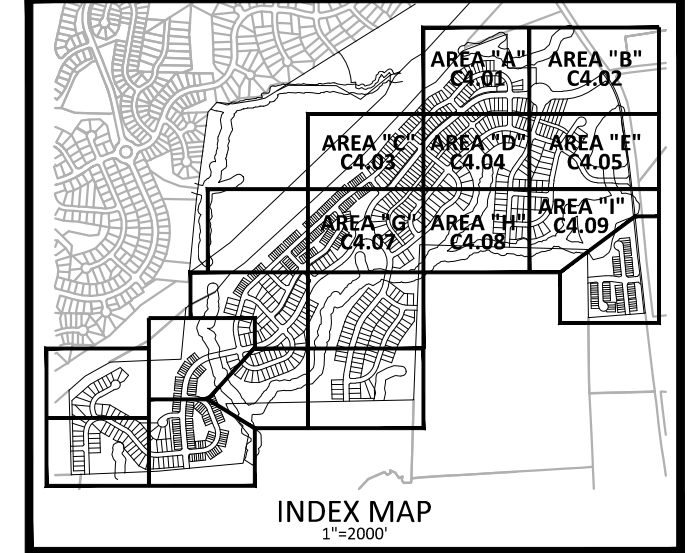
**UTILITY LEGEND**

|  |                        |  |                      |
|--|------------------------|--|----------------------|
|  | FIRE HYDRANT ASSEMBLY  |  | WATERLINE            |
|  | WATER METER            |  | WATER SERVICE LINE   |
|  | WATER VALVE            |  | UTILITY SLEEVE       |
|  | REDUCER                |  | SANITARY SEWER       |
|  | PLUG                   |  | SEWER SERVICE LINE   |
|  | BLOW-OFF ASSEMBLY      |  | SEWER FORCE MAIN     |
|  | SANITARY SEWER MANHOLE |  | GAS LINE             |
|  | OVERHEAD UTILITY       |  | UNDERGROUND ELECTRIC |
|  | SEWER CLEAN-OUT        |  | TELEPHONE            |
|  | SEWER FLOW DIRECTION   |  | EASEMENT LINE        |
|  | YARD LIGHTS            |  |                      |
|  | LIGHT POLE             |  |                      |
|  | POWER POLE             |  |                      |



**NOTES:**

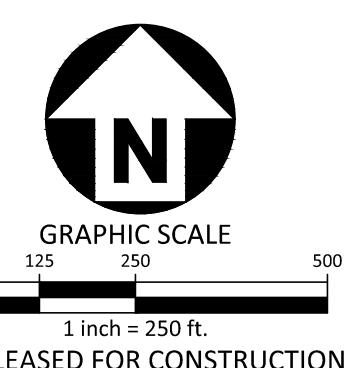
- DEEDS OF EASEMENT FOR SANITARY SEWER PURPOSES TO CITY OF RALEIGH RECORDED IN BOOK 12249, PAGE 864 AND BOOK 12466, PAGE 1149 AND AS SHOWN ON RECORDED PLAT IN BOOK OF MAPS 2006, PAGES 2216 AND 2217, WAKE COUNTY REGISTRY.
- (DEED OF EASEMENT SUPERSEDED BY BM 2008 PG 480 & 481)
- RIGHT OF WAY AND UTILITY EASEMENTS RECORDED IN BOOK 13736, PAGES 1287 AND 1294 AND AS SHOWN ON RECORDED PLAT IN BOOK OF MAPS 2009, PAGE 1091, WAKE COUNTY REGISTRY.
- (AS SHOWN ON SURVEY)
- DEEDS OF EASEMENT FOR SANITARY SEWER PURPOSES TO CITY OF RALEIGH RECORDED IN BOOK 12249, PAGE 864 AND BOOK 12466, PAGE 1171 AND AS SHOWN ON RECORDED PLAT IN BOOK OF MAPS 2006, PAGES 2216 AND 2217, WAKE COUNTY REGISTRY.



**CORPUD APPROVAL CONDITION:**  
CONVEYANCE OF SEWAGE FROM THE PROPOSED LOTS WITHIN THE POINT SOUTH CD PACKAGE #1 WILL RELY ON IMPROVEMENTS TO THE HARRIS CREEK INTERCEPTOR THAT ARE BEING DESIGNED BY AMERICAN ENGINEERING. THE PLAN SET IS TITLED HARRIS CREEK SANITARY SEWER REPLACEMENT AND WILL BE ASSIGNED PERMIT # S-5037. THE POINT SOUTH CD PACKAGE #1 LOTS WILL NOT BE RECORDED AND THE ONSITE WATER/SEWER UTILITIES WILL NOT BE ACCEPTED BY RALEIGH UNTIL THE HARRIS CREEK INTERCEPTOR IMPROVEMENTS UNDER PERMIT # S-5037 ARE APPROVED, INSTALLED, AND ACCEPTED BY RALEIGH FOR MAINTENANCE.

**CITY OF RALEIGH - PLANS AUTHORIZED FOR CONSTRUCTION**  
Electronic Approval: This approval is being issued electronically. This approval is valid only upon the signature of a City of Raleigh Review Officer below. The City will retain a copy of the approved plans. Any work authorized by this approval must proceed in accordance with the plans kept on file with the City. This electronic approval may not be edited once issued. Any modification to this approval once issued will invalidate this approval.  
City of Raleigh Development Approval  
City of Raleigh Review Officer

**SITE PERMITTING APPROVAL**  
*(Water and Sewer Permits (if applicable))*  
The City of Raleigh consents to the connection and extension of the City's Public Sewer System as shown on this plan. The material and Construction methods used for this project shall conform to the standards and specifications of the City's Public Utilities Handbook. City of Raleigh Public Utilities Department Permit # **S-5043**  
The City of Raleigh consents to the connection and extension of the City's Public Water System as shown on this plan. The material and Construction methods used for this project shall conform to the standards and specifications of the City's Public Utilities Handbook. City of Raleigh Public Utilities Department Permit # **W-3927**  
The City of Raleigh consents to the connection to its public sewer system and extension of the private sewer collection system as shown on this plan. The material and construction methods used for this project shall conform to the standards and specifications of the City's Public Utilities Handbook.  
City of Raleigh Public Utilities Department Permit # \_\_\_\_\_



**McADAMS**  
The John R. McAdams Company, Inc.  
2905 Meridian Parkway  
Durham, NC 27713  
phone 919. 361. 5000  
fax 919. 361. 2269  
license number: C-0293, C-187  
www.mcadamsco.com

**CLIENT**  
ASHTON RALEIGH RESIDENTIAL, LLC.  
900 RIDGEFIELD DRIVE, SUITE 335  
RALEIGH, NORTH CAROLINA 27609  
PHONE: 919. 422. 7663  
CONTACT: BOB MISHLER

**ASHTON WOODS.**

**THE POINT  
PHASES 1, 2, 6 AND 9  
CONSTRUCTION DRAWINGS - PACKAGE 1**  
EAST YOUNG STREET  
TOWN OF ROLESVILLE, WAKE FOREST TOWNSHIP,  
WAKE COUNTY, NORTH CAROLINA



**REVISIONS**

| NO. | DATE       | DESCRIPTION          |
|-----|------------|----------------------|
| 2   | 03.07.2023 | ADDED SCM "P"        |
| 6   | 08.30.2024 | ADD PHASES 2A AND 9A |

**PLAN INFORMATION**  
PROJECT NO. AWH-20000  
FILENAME AWH20000-CD-PKG-01-A0U1  
CHECKED BY  
DRAWN BY  
SCALE 1"=250'  
DATE 03.21.2022  
**SHEET**

**OVERALL UTILITY PLAN  
C4.00**

X:\Projects\AWH\AWH-20000\Production\Drawings\Construction\Drawings\Current\Drawings\AWH20000-CD-PKG-01-A0U1.dwg, 8/20/2024 9:49:42 AM, Sherri Williams