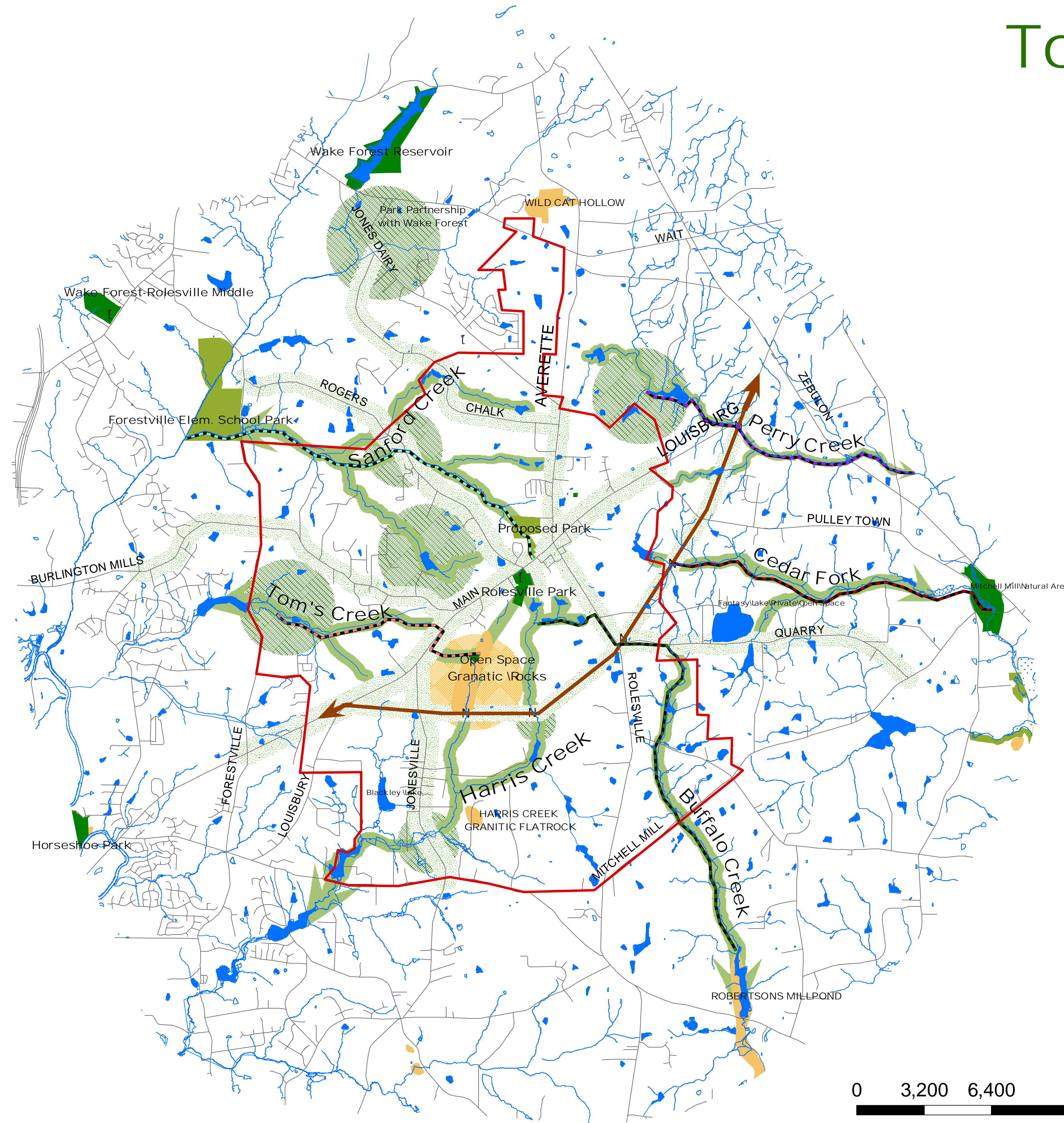


Town of Rolesville, NC Open Space And Greenway Plan



- | | | | |
|---|----------------------------|---|--------------------------|
|  | <i>Study Area</i> |  | <i>Future Underpass</i> |
|  | <i>Streets</i> |  | <i>Middle School</i> |
|  | <i>Creeks</i> |  | <i>Elementary School</i> |
|  | <i>Lakes</i> |  | <i>Existing Parks</i> |
|  | <i>Buffalo Creek Trail</i> |  | <i>Proposed Parks</i> |
|  | <i>Sanford Creek Trail</i> |  | <i>Natural Area</i> |
|  | <i>Toms Creek Trail</i> |  | <i>Scenic Roads</i> |
|  | <i>Cedar Fork Trail</i> |  | <i>Greenway Buffer</i> |
|  | <i>Perry Creek Trail</i> |  | <i>Satellite Parks</i> |
|  | <i>Future Bypass</i> |  | <i>Natural Area Park</i> |

0 3,200 6,400 12,800 Feet

Prepared January 31, 2002
By The Town of Rolesville
And Greenways, Inc.